

A Santa Gertrudis Weekend

46th

in beautiful Kentucky Bluegrass Country

KENTUCKY NATIONAL

Show & Sale



JULY 19 & 20, 2024

BOWLING GREEN, KY

United Producers Inc. Stockyards

Sale 11:00 a.m. Saturday, July 20



31st District 6 Haltered Heifer Sale

Sept 13 & 14, 2024 | Corydon, IN



For Show & Sale info contact:

Sale Chairman: Todd Osborne | 859-991-2438 | peppydoc1@aol.com
To Consign: Darren Richmond | 423-364-9281 | djrichmd@gmail.com
Jr. Show Info: Ashley Osborne | 859-991-9409 | stgertgirl@aol.com

This ad Compliments of the Osborne Livestock Co.
and Cedar Creek Beef Co.

46th

KENTUCKY NATIONAL

Show & Sale

July 19 & 20, 2024 | 11:00 am

United Producers Inc. Stockyards | 4350 Louisville Rd, Bowling Green, KY 42101

Sale Chairman

Cody Mattingly
270-668-3177

Sale Manager

Darren Richmond
423-364-9281
djrichmd@gmail.com

Auctioneer

Corbin Cowles
270-991-2534

Ring Men

Kip Childers
256-303-3382

Brent Shaw
205-412-5761

SCHEDULE OF EVENTS

Friday, July 19, 2024

10:00 am

KY National Santa Gertrudis Show

Saturday, July 20, 2024

8:00 am - 11:00am

Cattle available for viewing

11:00am

KY National Santa Gertrudis Sale

Suggested Lodging:

Sleep Inn 270-904-9400

KY SG Assn. Sale Rate of \$90 – Reserve before 7/11/24

Hampton Inn 270-842-4100

Super 8 Motel 270-781-4900

Holiday Inn Express 270-843-3200

Staybridge Suites 270-904-0480

Additional hotels available off I-65 at Exit 22



Sale will be on Facebook Live
Facebook/Darren Richmond
Look for Sale Updates and Videos

Catalog layout by Warehouse Creative **W | H**

A LETTER FROM KENTUCKY COMMISSIONER OF AGRICULTURE

Jonathan Shell | Kentucky Commissioner of Agriculture



Dear Friends,

As Kentucky Agriculture Commissioner, I want to welcome you to the 2024 Santa Gertrudis Show and Sale. The Kentucky Department of Agriculture is proud to have this recurring event for “America’s Original Beef Breed” in our Commonwealth.

The Santa Gertrudis breed is well-known for its adaptability, efficiency, and hardiness. The characteristics of this breed are ideal for varied and sometimes challenging conditions.

At the Kentucky Department of Agriculture, our team is committed to providing crucial services to our growing beef cattle industry. Whether through disease prevention and eradication, marketing, or assistance with livestock shows across the Commonwealth, the Department is dedicated to helping you succeed.

Again, welcome back, and best wishes for a successful Santa Gertrudis Show and Sale.

Best Wishes,

A handwritten signature in black ink that reads "Jonathan Shell". The signature is written in a cursive, flowing style.



Photo courtesy of Santa Gertrudis Breeders International

CONSIGNORS

Pitchford Cattle Co.
Eustace, TX
903-388-2288

Chris Bratton
Lexington, TN
731-695-3816

Heath Farm
Hodgenville, KY
270-735-2470

Hiss Family Farm
Columbia City, IN
260-503-5310

Jacklett Farms
Jasper, GA
404-909-0340

Parker Farms
Cave City, KY
270-670-6285

Robert Rans
Culver, IN
574-315-7542

Ward Farm
Hartselle, AL
256-340-0198

Windcrest Farm
Leitchfield, KY
270-287-8629

Windy Knob SG
Russia, OH
937-538-6182

Callie Derossett
Sulphur, KY
502-523-7850

Stroman Cattle Co.
Bryan, TX
979 -778 -0333

Mattingly Farms
Battletown, KY
270-668-3177

Laura Zibliski
Eustace, TX
979-203-9849

Paul Vondenheuvel
Sidney, OH
937-492-2900



MF MISS DATADRIVEN 617L

Consigned by: Mattingly Farm

Open Heifer Reg. #20235493 DOB: 07/21/2023

KR CATALYST 531/15 KR 225/10
KR 310/12 2YO

KR143/17 DATA DRIVEN

Reg. #20172997

KR 301/06 1A KR 339/03
KR 252/02

RS BUBBA MR DOUBLE TT WYLIE 803-2
AJH 30/0

HEATH'S MEOW

Reg. #20175711

HEATHS D-6 SHERLAND'S RAMBO
HEATH'S SSR

Weights		EPDs								
BW	YW	BW	WW	YW	Milk	TM	HCW	MARB	REA	SC
71		-0.4	13	12	-2	8	-1	0.10	0.03	0.46

Balanced Index: 25% | Cow/Calf Index: 15% | Terminal Index: 35%

Take a look at the yearling Data Driven Daughter that goes back to Heath Farm and Double TT Ranch genetics on her dams side. Her breed indexes are all in the breeds top 35%. Don't miss out on this opportunity to add Data Driven genetics to your herd. Sells Open.



Data Driven Sire of Lot 1



HEATHS LADY H

Consigned by: Heath Farm

Bred Heifer Reg. #20227276 DOB: 09/02/2022

OLC HUSTLER 518 MOSBY CREEK HUSTLER 512
MOSBY CREEK RED LADY 4183

HEATH'S KDV

Reg. #20140962

HEATH'S KELLY KAY OSBY CREEK RIB-EYE 375
DESIREE 4/09

RS BUBBA

HEATHS HH LADY

Reg. #20198251

MR DOUBLE TT WYLIE 803-2
AJH 30/0

SHERLAND'S RAMBO
HEATH'S SSR

Weights		EPDs								
BW	YW	BW	WW	YW	Milk	TM	HCW	MARB	REA	SC
74		-0.3	6	2	-1	5	-7	-0.04	-0.05	0.27

Balanced Index: 70% | Cow/Calf Index: 65% | Terminal Index: 75%

This gentle stout heifer is out of our KDV Bull r# 20140962 who has sired several show heifers including Two SGBI High Point Star 5 females in 2018 & 2019. She sells bred to our 777 Farms Herd Sire r# 20216209 who is out of SJ High Roller and Miss Grandview Annie both National Champions. 922 will calve close to her two year old birthdate.



BSR BETH

Consigned by: Gracey Pitchford

Bred Heifer Reg. #20225125 DOB: 11/12/2022

MR FLEX TARA'S TOP DRIVE 911/2
SR 60/3

BSR RIP

Reg. #20200819

CF WILMA 312 DF NEW DESIGN 365
MISS DIAMOND C 711

SR 42/7 LVJ MASON 0/72
SR 8/4

BSR 42

Reg. #20208551

BSR NORA ROCKIN 3T PRINCE CHARMAN 5/1
BRIGGS 601/9

Weights		EPDs								
BW	YW	BW	WW	YW	Milk	TM	HCW	MARB	REA	SC
		0.5	12	10	-2	8	-5	-0.06	0.02	0.41

Balanced Index: 65% | Cow/Calf Index: 50% | Terminal Index: 70%

This heifer is a long bodied and sound walking female, who has lots of capacity to back her. BSR Beth is 4 months safe, bred to "SR My Friend YN 7/20". This match up has potential to be a home run, combining Top Drive, New Design, Prince Charming, and Flex from her top side to "SR My Friend YN 7/20" is the definition of POWER MEETING POWER.



3



PC MS ROSE 72/K

Consigned by: Pitchford Cattle Co

Bred Heifer Reg. #20220534 DOB: 01/10/2022

COPPERHEAD 214 BIG ORANGE EXPRESS 42/7
TINNEY 923

PC MR COPPERHEAD 915E2

Reg. #20174032

RDF SANCHO 7-216
SILVA 634/7

SILVA 915/3

TARA'S TOP DRIVE 911/2 MR. DOUBLE TT 94 MUDFLAP 94
LCC 911

PC PINK ROSE'S STEM

Reg. #20151610

PC YELLOW ROSE 32-2 PS CADD0 201-7
ISS DOUBLE TT 295

Weights		EPDs								
BW	YW	BW	WW	YW	Milk	TM	HCW	MARB	REA	SC
72		0.8	18	22	0	13	2	0.01	0.00	0.27

Balanced Index: 40% | Cow/Calf Index: 40% | Terminal Index: 35%

PC MS ROSE 72/K is halter broke, kid friendly, and ready to hit the show ring this fall. She comes to you 6-7 months safe to "SR My Friend YN 7/20" who is one of our top herd sires here at Pitchford Cattle. 72/K is out of one of our Rose Family heifers "PC PINK ROSE'S STEM", this cow family has set our breeding program apart from the rest. Don't miss this opportunity on a two in one package ready to be a barn favorite.



4



SR 72/20

Consigned by: Pitchford Cattle Co.

Pair w/ Bull Calf Reg. #20200280 DOB: 03/25/2020

KR1582/17
Reg. #20175788

KR 482/15 KR 781/13
KR 34/08 1A

KR 574/09 TOP GUN 244
KR 15R/07 F1

LJV MASON 0/72 SR 710
LJV DOLLY 8/48

SR 25/18
Reg. #20180849

SR 910 MR WINROCK N127
SR 223

Weights		EPDs								
BW	YW	BW	WW	YW	Milk	TM	HCW	MARB	REA	SC
		-2.5	-4	-3	-3	1	-1	0.06	0.05	0.57

Balanced Index: 40% | Cow/Calf Index: 50% | Terminal Index: 30%

SR 72/20 is a cow calf pair coming at you, the bull calf on the side was born on 5/13/2024 out of 3T 136J, which is a "2022" son. 72/20 is a half sister to Pitchford Cattle's herd sire "SR My Friend YN 7/20". She will be a front pasture producing female.



LK MISS 1745/L

Consigned by: Laura Zibilski

Open Heifer Reg. #20235501 DOB: 04/11/2023

SR MY FRIEND YN 7/20
Reg. #20200218

KR1582/17 KR 482/15
KR 574/09

SR BELLA 91/5 SR GENESIS 75/3
SRT15

ROCKING A 1380 001/0
ROCKING A'S HOPE 710

MYERS 17/45
Reg. #20175662

HARRIS FARMS 79/2 DB 161/0
HARRIS FARMS 212/0

Weights		EPDs								
BW	YW	BW	WW	YW	Milk	TM	HCW	MARB	REA	SC
68	850	-0.5	10	14	-3	6	-1	-0.03	-0.02	0.35

Balanced Index: 55% | Cow/Calf Index: 65% | Terminal Index: 50%

LK MISS 1745/L is very attractive, extended from her front 1/3 female who is sired by "SR My Friend YN 7/20". 1745/L is very balanced, with a great set of EDPs. Her dam, 17/45, is one of my top producing females, she is as consistent as they come with giving high quality show ring prospects for my program. This female has a whole lot of future in front of her, don't miss this opportunity.



SCC MS NITRO 22 K

Consigned by: Stroman Cattle Co.

Bred Heifer Reg. #20227382 DOB: 11/10/2022

B NITRO 46/18
Reg. #20180828

KR CATALYST 531/15 KR 225/10
KR 310/12

SR 15/6 SR GENESIS 75/3
SRT13

FC SAVAGE 25/4 ET CB BEAR 30/2
FC DUCHESS 32/1

FC 22/0
Reg. #20203053

HH 36-1 STONE COLD 21/1
HH 475/4

Weights		EPDs								
BW	YW	BW	WW	YW	Milk	TM	HCW	MARB	REA	SC
45	882	0.1	11	6	-7	2	-7	0.08	-0.06	0.44

Balanced Index: 40% | Cow/Calf Index: 30% | Terminal Index: 55%

This Nitro daughter had an IMF of 4.37 and a ribeye of 10.10. SCC MS NITRO 22 K will be AI'd to D'Boss 82H19, he is a bull that we purchased from Quail Valley Farms for \$25,000. His calves have hit the ground and have not disappointed us one bit, he will have show heifers hitting the show ring soon. This mating is unmatched! If AI does not stick, I will furnish 2 straws of D'Boss to the buyer!!





SCC FORGOTTEN 74L ET

Consigned by: Stroman Cattle Co.

Bred Heifer Reg. #20230960 DOB: 02/02/2023

R CATALYST 531/15

KR 225/10

KR 310/12

SR THE FORGOTTEN ONE OF CATALYST

Reg. #20190789

SR 76/6

LJV MASON 0/72

BRIGGS 032/12

TF 110 RED SOLO CUP

(O.U.) SUPER STAR 33/5

HARRIS FARMS T002/8

RS MARKIE

Reg. #0172150

MISS DOUBLE TT 257

R DOUBLE TT CORNERSTONE

MISS DOUBLE TT 796

Weights		EPDs								
BW	YW	BW	WW	YW	Milk	TM	HCW	MARB	REA	SC
55		1.0	16	19	-10	2	0	0.14	0.09	0.47

Balanced Index: 30% | Cow/Calf Index: 25% | Terminal Index: 30%

Check out this EPD profile on 74L, She has 10 trait in top 30%. She posted an IMF of 4.30 with ribeye of 10.96. Beautiful deep bodied female great pedigree she is sired by the Forgotten One 66/19 and an own daughter of Red Solo Cup 110. Sells AI'd to D'Boss 82H19 we purchased from Quail Valley Farms he's a Hatchet grandson x Chosen One his first calves are on the ground they are lookers.



7-12

Consigned by: Jacklett Farm

Pair w/ Bull Calf Reg. #20176557 DOB: 11/11/2017

GUNNIE 803

GUNSLINGER 13/5

CHEEKS 7498/3

DOC HOLIDAY 216

Reg. #201201002462

MISS MN 911/7

PITCHFORD/GRANDVIEW 539T

PG BULLSEYE 5020

DOUBLE C 11/31

MR WINROCK S365

DOUBLE C FARMS 9458

HADLEY 15-32

Reg. #20158688

HARRELSON 7/0

GRAY OAKS 502

HARRELSON 2/2

Weights		EPDs								
BW	YW	BW	WW	YW	Milk	TM	HCW	MARB	REA	SC
		0.7	4	4	-2	3	-8	-0.07	-0.08	0.35

Balanced Index: 75% | Cow/Calf Index: 70% | Terminal Index: 80%

Have a look at our Doc Holiday daughter. On the top side, she goes back to grizzly 3308 as well as Winrock Maverick N113 ET. If you study her pedigree you will find old school genetics that have proven the test of time. She comes to you today with a big bull calf show prospect sired by 777 Beez NC best of Polled registration number 20196143 she will go home with you today bred back the same way for a fall calf. A solid three and one package.



JF MISS LUCKIE LADY

Consigned by: Jacklett Farm

Bred Heifer Reg. #20225806 DOB: 10/17/2022

TOWNSEND NEVER SIDE 0615

RDF SANCHO'S NEVER BEFORE 1136

RDF LONGSIDE 1097

777 BEEZ

Reg. #20196143

MISS 777 535

SJ HIGH ROLLER 005

MISS GRANDVIEW 322

DOC HOLIDAY 216

GUNNIE 803

MISS MN 911/7

7-12

Reg. #20176557

HADLEY 15-32

DOUBLE C 11/31

HARRELSON 7/0

Weights		EPDs								
BW	YW	BW	WW	YW	Milk	TM	HCW	MARB	REA	SC
62		0.3	7	6	-2	5	-6	-0.06	-0.03	0.32

Balanced Index: 80% | Cow/Calf Index: 70% | Terminal Index: 80%

Jacklett Farms Lucky Lady is a super strong bred heifer sired by 777 Beez NC Best of Polled. She sells short bred to a 777 Beez son that is super eye appealing with lots of muscle. Lady is super gentle and has been shown successfully. A solid set of epd's in a phenotypically eye appealing package. Please note this is 7-12's calf from the previous year. The whole family is here so buy one or take them all you won't go wrong.



PF 423

Consigned by: Parker Farms

Open Heifer Reg. #20235367 DOB: 3/21/2023

TASER HARRIS FARM 12/8(WAVE MAKER)
DIVA 26/8

GRANDVIEW 742

Reg. #20168208

MISS GRANDVIEW 035 RED HOT 4010
MISS GRANDVIEW 2126P

CB BEAR 30/2 QT SHERMAN TANK
AJH 113/8

G.O 562

Reg. #20152422

HARRIS FARMS 349 HARRIS FARMS 3/4
HARRIS FARM 612

Weights			EPDs								
BW	YW		BW	WW	YW	Milk	TM	HCW	MARB	REA	SC
75			0.4	15	16	-1	10	-1	-0.06	0.03	0.36

Balanced Index: 45% | Cow/Calf Index: 35% | Terminal Index: 55%

Parker Farms brings you another young female out of our Grandview 742 Bull and a Gray Oaks dam out of CB Bear 30/2. This deep bodied, good natured female will make an excellent addition to your herd. Take her home and breed her to the bull of your choice!



PF 503

Consigned by: Parker Farms

Open Heifer Reg. #20235368 DOB: 04/11/2023

TASER HARRIS FARM 12/8(WAVE MAKER)
DIVA 26/8

GRANDVIEW 742

Reg. #20168208

MISS GRANDVIEW 035 RED HOT 4010
MISS GRANDVIEW 2126P

B14 AHJ 126/0
HEFTE RANCH 804

99C13 BRIGGS 067E6

Reg. #0176049

516/14 BRIGGS 643/11
RIGGS 761/12

Weights			EPDs								
BW	YW		BW	WW	YW	Milk	TM	HCW	MARB	REA	SC
73			0.5	19	22	0	13	2	-0.01	0.04	0.35

Balanced Index: 20% | Cow/Calf Index: 10% | Terminal Index: 35%

Take a look at our excellent young heifer that is well muscled and exhibits a straight long back. She has the phenotype we all strive to produce. Another great young female out of our Grandview 742 Herd Sire and her dam goes back to Hefte and Briggs Ranches breeding. Sells Open.



B-235

Consigned by: Chris Bratton

Bred Heifer Reg. #20227292 DOB: 04/26/2022

LF MAG DADDY SUGAR DADDY 250
LF MAGNOLIA 100

JF MAG'S STETSON

Reg. #20176795

SHAKER'S SUZIE-Q B2 SHAKER'S SIERRA 10/4
INDIAN PRINCESS 756

JCS TAD COOPER 74/6 JCS DEAN 91/9
L A T 33/14

B191

Reg. #20187736

88 1004 SHARK 06 106
CHRIS & EMILY B 0502

Weights			EPDs								
BW	YW		BW	WW	YW	Milk	TM	HCW	MARB	REA	SC
			0.2	3	0	-1	5	-8	-0.04	-0.07	0.30

Balanced Index: 85% | Cow/Calf Index: 80% | Terminal Index: 90%

B-235 is sired by JF Mags Stetson from Jacklett Farms and her dam goes back to Scott Sherrill's Bull on the top side and Shark 06 on the bottom side. Sells bred to Windcrest 2/42 r# 20220275. Due to calve this fall.



B-239

Consigned by: Chris Bratton

Bred Heifer Reg. #20227294 DOB: 09/28/2022

LF MAG DADDY SUGAR DADDY 250
LF MAGNOLIA 100

JF MAG'S STETSON

Reg. #20176795

SHAKER'S SUZIE-Q B2 SHAKER'S SIERRA 10/4
INDIAN PRINCESS 756

JCS TAD COOPER 74/6 JCS DEAN 91/9
L A T 33/14

B192

Reg. #20187737

B 97 SHARK 06 106
CHRIS & EMILY B 0502

Weights			EPDs								
BW	YW		BW	WW	YW	Milk	TM	HCW	MARB	REA	SC
			0.1	3	-1	-1	5	-8	-0.03	-0.07	0.30

Balanced Index: 85% | Cow/Calf Index: 80% | Terminal Index: 90%

Nice young heifer sired by our Jacklett Farms Bull and her dam goes back to Scott Sherrill's Bull on the top side and Shark 06 on the bottom side. Sells bred to Windcrest 2/42 r# 20220275. Due to calve this fall.

15

ARLY 117

Consigned by: Paul Vondenhuevel

Bred Cow Reg. #20212202 DOB: 03/23/2021

MR. DOUBLE TT 109 ERVIN 109/8 R DOUBLE TT GUS 112
MISS DOUBLE TT 251

MC CHATTANOOGA 151/2
CSC COWGIRL 10-5

NAF COWGIRL 9C10

TF 110 RED SOLO CUP (O.U.) SUPER STAR 33/5
HARRIS FARMS T002/8

SHAKER'S CAMILLE A-4 SHAKER'S SIERRA 10/4
2S RANCH 4151

CIRCLE A RED ADVANTAGE

Reg. #20144040

SHAKER'S RED LADY

Reg. #20144417

Weights		EPDs									
BW	YW	BW	WW	YW	Milk	TM	HCW	MARB	REA	SC	
65		-0.4	3	4	-3	3	-4	-0.13	-0.01	0.31	

Balanced Index: 75% | Cow/Calf Index: 70% | Terminal Index: 75%

Don't miss this proven producer a Daughter of Circle A Red Advantage a son of Double TT Ervin. On her dams side see goes back to TF Red Solo Cup and Shakers Sierra. Sells heavy bred and should calve before sale date to Windy Knob Biceps r# 20215657.

17

35

Consigned by: Hiss Family Farm

Bred Heifer Reg. 20227714 DOB: 11/10/2022

KR 656/06 SILVA 407/2 ET
KR 329/04

KR 288/5 KR 431/03
KR 9/593

SJ HIGH ROLLER 005 HARRIS FARM 12/8(WAVE MAKER)
SJ LADY VEGAS 755

TF 9133 SOMBRERO 394
DOUBLE E FARMS 104

KR 500/09

Reg. #1279580

MISS 777 759

Reg. #20172661

Weights		EPDs									
BW	YW	BW	WW	YW	Milk	TM	HCW	MARB	REA	SC	
66		1.5	7	19	1	8	-2	0.03	-0.02	0.27	

Balanced Index: 50% | Cow/Calf Index: 40% | Terminal Index: 60%

This dark red feminine female has King Ranch genetics on the top side and Tinney Farms and 777 Farms on the dams side. She sells pasture exposed to DSR 1914 r# 20196319

19

RANS 521

Consigned by: Robert Rans

Pair w/ Bull calf Reg. #20216122 DOB: 04/20/2021

SIMBA 63 TF 110 RED SOLO CUP
MISS DOUBLE TT 413

SHAKER'S CORINE Y10 SHAKER'S ALISAR 11 Z10
SHAKER'S PLAYGIRL III A-5

SHAKER'S WRATH SHAKER'S PLAYBOY 720
SHAKER'S MARA B1

LF ARR TEN LF REN TEN TEN TEN X19
LF ARROW X18

SHAKER'S INTREPID

Reg. #20190046

RLR01

Reg. #20165441

Weights		EPDs									
BW	YW	BW	WW	YW	Milk	TM	HCW	MARB	REA	SC	
58		1.3	7	9	-3	4	-5	-0.08	0.00	0.33	

Balanced Index: 90% | Cow/Calf Index: 90% | Terminal Index: 90%

Dark Red Polled cow that combines Shaker Hill and Tinney Farms on the top side and Mosby Creek Ranch genetics on the dams side. She sells with her Bull calf born 5/2/24 sired by our Angus x Hereford Bull making the calf a Star 5 . Sells exposed back to our QVF Bull r# 20220870.



16

MC 147

Consigned by: Hiss Family Farm

Pair w/ Bull Calf Reg. #20218205 DOB: 10/01/2021

MC 423 TOP GUN 244
ROCKY HAMMOCK 54/5

DIAMOND S MEGAN 515 DIAMOND S RANGER 146
DIAMOND S CARMAN 143

MC MISSILE 220 MC ROCKET 183/8
MC 504/9

MC 526 MC 423
MC 238

MC 417

Reg. #20143268

MC 802

Reg. #20185546

Weights		EPDs									
BW	YW	BW	WW	YW	Milk	TM	HCW	MARB	REA	SC	
65		0.7	2	2	-2	3	-7	0.00	-0.03	0.43	

Balanced Index: 85% | Cow/Calf Index: 75% | Terminal Index: 85%

This polled well balanced female sells with her bull calf born 3/3/2024 sired by Red Doc 8126. She is a great mother with an excellent udder, She sells exposed back to DSR 1914 r# 20196319.

18

RHR 37

Consigned by: Hiss Family Farm

Open Heifer Reg. #20232126 DOB: 04/30/2023

KR 656/06 SILVA 407/2 ET
KR 329/04

KR 288/5 KR 431/03
KR 9/593

HISS 415/5 SHAKERS MAGIC A-2
HISS 519/3

SJ LADY SHELLY 319 HARRIS FARM 12/8(WAVE MAKER)
SC BELLA'S CALI 723/1

KR 500/09

Reg. #1279580

RANS 120

Reg. #20201161

Weights		EPDs									
BW	YW	BW	WW	YW	Milk	TM	HCW	MARB	REA	SC	
60		0.1	2	10	-2	3	-1	0.03	-0.03	0.30	

Balanced Index: 55% | Cow/Calf Index: 45% | Terminal Index: 65%

This light colored feminine heifer has good spring of rib and she goes back to King Ranch genetics on the top side and Shaker Hill and Harco on the dams side. Sells Open.



20

W100

Consigned by: Ward Farm

Open Heifer Reg. #20234824 DOB: 06/07/2023

RED DOC ET DINERO II 5321 KR 189/11
RDF BONITA 8017

RED DOC 5085 RED DOC SABLE LINDO 3085
RED DOC 3129

NG 700 RED DOC RED WAGON 3264
NG 7A2

MC 612 MC OUTLAW 204
PEANUT BUTTER 104

Red Doc 8126

Reg. #20185432

MC 029

Reg. #20208546

Weights		EPDs									
BW	YW	BW	WW	YW	Milk	TM	HCW	MARB	REA	SC	
67		0.1	13	13	3	13	1	0.07	0.09	0.33	

Balanced Index: 40% | Cow/Calf Index: 40% | Terminal Index: 35%

Don't miss out on this stout open heifer that combines Red Doc Farm and MC Ranch genetics! She has an impressive EPD profile with 7 traits in the breeds top 35% Sells open ready to breed to the bull of your choice.

21

CHARLOTTE

Consigned by: *Windy Knob*

Bred Cow Reg. #20220424 DOB: 01/25/2022
TF 110 RED SOLO CUP (O.U.) SUPER STAR 33/5
 HARRIS FARMS T002/8

RS SAGA
 Reg. #20151634

MISS DOUBLE TT 813 813-1

MR TT DEL RIO 29 29/3
 MISS TT 167

MULTIPLE SIRE

MULTIPLE SIRE
 MULTIPLE DAM

MULTIPLE DAM

MULTIPLE DAM

MULTIPLE SIRE
 MULTIPLE DAM

Weights		EPDs								
BW	YW	BW	WW	YW	Milk	TM	HCW	MARB	REA	SC
64		1.4	4	5	-1	5	-7	-0.07	-0.01	0.32

Balanced Index: 95% | Cow/Calf Index: 90% | Terminal Index: 95%
 Dark Red Polled female, on her sires side she goes back to TF Red Solo Cup and Double TT Ranch genetics. She sells heavy bred to our Son of Circle A Red Advantage.
 r# 20215657.



22

DP MR JACKPOT 106K1 ET

Consigned by: *Pitchford Cattle Co.*

Bull Reg. #20227396 DOB: 11/06/2022

HARRIS FARMS 190E

KR 921/15
 HARRIS FARMS 1524

QVF JACKPOT 5369G8
 Reg. #20193317

RED DOC 5369

36/3
 RDF 0035

SR 27/6

LJV MASON 0/72
 SR ARKOMA 30/0

SR OAKLEY 106/18
 Reg. #20185119

SR 105/3

AL ZEUS 213
 SR 80/0

Weights		EPDs								
BW	YW	BW	WW	YW	Milk	TM	HCW	MARB	REA	SC
67		-1.5	14	9	-2	8	-2	0.56	0.05	0.31

Balanced Index: 10% | Cow/Calf Index: 25% | Terminal Index: 3%
 Future herd sire great sheath, great numbers, marbling score .56 that's top 1%. Terminal index top 3%, balances out top 10%, Sired by the Jackpot 5369G8. His dam is SR Oakley 106/18 named after my first granddaughter these genetics Mason and Zues enetics combination, Great disposition, Sells semen tested.



23

SCC MPACT 428 K1 ET

Consigned by: *Stroman Cattle Co.*

Bull Reg. #20227211 DOB: 11/09/2022

HARRIS 257/4

AJH 126/0
 HARRIS FARMS 037/2

SR MPACT 30/F2
 Reg. #20180821

SR ARKOMA 30/0

MR WINROCK N127
 PERNER D 931

KR 921/15

KR 800/11
 KR 110N/09

SR REYNA 428/H5
 Reg. #20200803

OLIVAREZ 428

OLIVAREZ RANCHE 3/91
 OLIVAREZ RANCH 4/121

Weights		EPDs								
BW	YW	BW	WW	YW	Milk	TM	HCW	MARB	REA	SC
52	988	-1.6	2	2	4	9	-4	0.41	-0.06	0.42

Balanced Index: 30% | Cow/Calf Index: 55% | Terminal Index: 15%
 Great future herd sire, Marbling score .41 and Top 4% milk he will be top 3% BW. Low birth bull with WW 610#. Great genetics make up impact, Harris 257/4, the great Arkoma 30/0, and look on bottom side Olivarez 428 a phenomenal cow. This bull will help move the breed forward. Sells Semen tested.



24

BURTON THE BRUISER

Consigned by: *Paul Vondenhuevel*

Bull Reg. #20225809 DOB: 09/26/2022

RED DOC RED WAGON 3264

KR 189/11
 OLIVAREZ RANCHES 1-916

NG 700
 Reg. #20177154

NG 7A2

WAUKARU GOLD CARD 5042
 NG7A

RED DOC RED WAGON 3264

KR 189/11
 OLIVAREZ RANCHES 1-916

MC 820
 Reg. #20187204

MC 218

RIGGS 071/8
 RANGER

Weights		EPDs								
BW	YW	BW	WW	YW	Milk	TM	HCW	MARB	REA	SC
		-1.0	6	3	2	9	-2	-0.01	0.06	0.34

Balanced Index: 60% | Cow/Calf Index: 60% | Terminal Index: 60%
 Nice Polled bull ready to go to work, Sired by NuGen 700 that goes back to Red Doc Farms and MC Ranch genetics. Check out his Low Birth Weight EPD in the breeds top 15%.



25

CDE LUCCILLE

Consigned by: Callie Derosett

Star 5 Bred Heifer Reg. #20230446 DOB: 03/18/2023

ANGUS

ANGUS ANGUS
ANGUS ANGUS
HEATH'S KDV OLC HUSTLER 518
HEATH'S KELLY KAY HEATH'S KELLY KAY
RS MERLOT Harris 11/5
MISS DOUBLE TT 1289

CDE JUDITH 1/21

Reg. #5010212

Weights		EPDs									
BW	YW	BW	WW	YW	Milk	TM	HCW	MARB	REA	SC	
75		-0.4	0	-4	-2	1	-8	-0.02	-0.04	0.34	

Balanced Index: 90% | Cow/Calf Index: 90% | Terminal Index: 90%

We dug deep into the heart of our program to bring this heifer to Bowling Green! It is of my opinion that she possesses a very unique pedigree. The combination of high profile Angus and proven Santa Gertrudis genetics. Lucelles sire PVF Marvel was the sire of the high selling lots at Prairie. View Farms this fall, and her dam CDE Judith is no stranger to the backdrop. Breeding status announced sale day.

26

HEATHS MISS JAYCE

Consigned by: Heath Farm

Star 5 Bred Heifer Reg. #20231037 DOB: 01/04/2023

OLC HUSTLER 518 MOSBY CREEK HUSTLER 512
MOSBY CREEK RED LADY 4183
HEATH'S KELLY KAY MOSBY CREEK RIB-EYE 375
DESIREE 4/09
SHORTHORN (Polled) SHORTHORN (Polled)
SHORTHORN (Polled)
SHORTHORN (Polled) SHORTHORN (Polled)
SHORTHORN (Polled)

HEATH'S KDV

Reg. #20140962

SHORTHORN (Polled)

Weights		EPDs									
BW	YW	BW	WW	YW	Milk	TM	HCW	MARB	REA	SC	
55		-0.4	-1	-5	-2	1	-9	0.00	-0.05	0.34	

Balanced Index: 90% | Cow/Calf Index: 90% | Terminal Index: 90%

This nice gentle Star 5 heifer is out of our KDV Bull, who has done a great job for us siring several good heifers and bulls and he did a great job on this one. Her dam is a polled shorthorn cow who was a class winner at the National Jr Shorthorn show! She sells exposed to our New 777 Bull r# 20216209, breeding status announced sale day.



29

RANS 7/22

Consigned by: Robert Rans

Star 5 Pair w/ Bull Calf Reg. #20226220 DOB: 04/11/2022

SIMBA 63 TF 110 RED SOLO CUP
MISS DOUBLE TT 413
SHAKER'S CORINE Y10 SHAKER'S ALISAR 11 Z10
SHAKER'S PLAYGIRL III A-5
CROSSBREED CROSSBREED
CROSSBREED CROSSBREED

SHAKER'S INTREPID

Reg. #20190446

CROSSBREED

Weights		EPDs									
BW	YW	BW	WW	YW	Milk	TM	HCW	MARB	REA	SC	
67		1.6	5	7	-3	3	-6	-0.04	-0.02	0.37	

Balanced Index: 95% | Cow/Calf Index: 95% | Terminal Index: 95%

Red Mott Star 5 Polled female sells with her first calf a Bull born 5/25/24 sired by our QVF Bull. Sells exposed back to the same bull.

27

MF MISS IMPACT 1801L

Consigned by: Mattingly Farm

Star Open Heifer Reg. #20235492 DOB: 08/02/2023

HARRIS FARMS 190E KR 921/15
HARRIS FARMS 1524
SR 60/3 LJV MASON 0/72
SR 10.0
HEREFORD (POLLED) HEREFORD (POLLED)
HEREFORD (POLLED)
HATTIE 713 LADIATOR 020
JACKSON 1/5

QVF IMPACT 60G25

Reg. #20193300

HH1801

Reg. #20186867

Weights		EPDs									
BW	YW	BW	WW	YW	Milk	TM	HCW	MARB	REA	SC	
74		0.8	21	20	1	15	1	0.19	0.12	0.49	

Balanced Index: 25% | Cow/Calf Index: 30% | Terminal Index: 20%

This is the kind that are in High Demand, Star 5 ¼ Santa Gertrudis ¼ Hereford Red Mott open heifer. Check out her EPD profile with top 15% in WW and Marbling. She is sired by QVF Impact 60G25.

28

WINDCREST 3/62

Consigned by: Windcrest Farm

Star 5 Open Heifer Reg. #20231514 DOB: 06/18/2023

HEREFORD (POLLED) HEREFORD (POLLED)
HEREFORD (POLLED)
HEREFORD (POLLED) HEREFORD (POLLED)
HEREFORD (POLLED)
5-E RUSHMORE 141 5-E'S INTEGRITY 350
5-E TANYA 322
MR. DOUBLE TT 109 ERVIN 109/8
TF 279

HEREFORD (POLLED)

CIRCLE A 43

Reg. #20201479

Weights		EPDs									
BW	YW	BW	WW	YW	Milk	TM	HCW	MARB	REA	SC	
70		-0.2	3	3	0	5	-7	-0.06	-0.07	0.40	

Balanced Index: 85% | Cow/Calf Index: 85% | Terminal Index: 85%

Red Mott Star 5 heifer sired by Polled Hereford bull Revved Up. Her dam is a Circle A Farm bred Rushmore daughter that goes back to Tinney, 2S, Wendt and Briggs Ranches genetics. Make her your next Star 5 Show Prospect or your next Commercial replacement female. Sells open.

30

RS SALTY 216-9

Consigned by: Windy Knob

Star 5 Bred Cow Reg. #20192375 DOB: 04/02/2019

HEREFORD (HORNED) HEREFORD (HORNED)
HEREFORD (HORNED)
HEREFORD (HORNED) HEREFORD (HORNED)
HEREFORD (HORNED)
MR. DOUBLE TT CISCO 146 MR TT RE DOG CISCO 252
STOUT 845
MISS DOUBLE TT 14 MISS DOUBLE TT 209 209-6
MR. DOUBLE TT GIZZARD 200
MISS DOUBLE TT 90

HEREFORD BULL

Reg. #99904000

MISS DOUBLE TT 14

Reg. #201001005842

Weights		EPDs									
BW	YW	BW	WW	YW	Milk	TM	HCW	MARB	REA	SC	
63		0.2	4	0	-3	3	-8	-0.06	-0.05	0.33	

Balanced Index: 90% | Cow/Calf Index: 85% | Terminal Index: 90%

Big Stout Polled Star 5 Red Mott female sells heavy bred to our son of Circle A Red Advantage. r# 20215657.



Donated Donkey

Donated by: Heath Farm

Donkey donated by Heath Farms proceeds go to the Kentucky Jr. Santa Gertrudis Association.



United



Producers, Inc.

Bowling Green, KY

4350 Louisville Road | (270) 843-3224

Stop by to see how we can serve your farm business needs!

Cattle Sale

Every Tuesday at 1 p.m. CDT

Receiving hours:

Monday: 7 a.m. - 7 p.m. & Tuesday: 7 a.m. - noon

Graded Sheep & Goat Sale - Every 2nd & 4th Thursday at 5 p.m.

Receiving hours: 9 a.m. - noon & 1 - 3 p.m.

For more information, contact:

Cory Wallace at (270) 516-9043 or Kayla Shelton at (270) 843-3224

uproducers.com



Your Partner in Growth

Whether you're looking to purchase a farm for the first time or expand your existing operation, Magnolia Bank provides unique financing solutions to help your business grow.



Experience the Magnolia Way

Learn more at magnoliabank.com



Visit Us Today

Lincoln Hills
794 Old Elizabethtown Rd
Hodgenville, KY 42748
270.358.3111

Parkway Plaza
106 Lincoln Dr
Hodgenville, KY 42748
270.358.3183

Elizabethtown
651 West Dixie Ave
Elizabethtown, KY 42701
270.765.4072

ROCK & ROGERS SERVICE CENTER

300 S. LINCOLN BLVD.
HODGENVILLE, KY 42748

"SERVICE IS OUR BUSINESS"

270.358.4001 270.358.8261

GREENWORKS • WORLD LAWN

"IF YOU NEED IT, WE HAVE IT"

FISHER
Auto Parts

221 E. Main
Hodgenville, KY 42748

(270) 358-4312

OUR AG LOANS ARE AS ADAPTABLE AS YOUR HERD

Let one of our expert Ag Loan Officers customize your Ag Loan today!

Save time and apply online: www.TheCecilianBank.com



CB The
Cecilian
Bank
Your Hometown Connection

Member
FDIC
EQUAL OPPORTUNITY
LENDER

f i t

(270 982-4TCB | NMLS # 409707)

Heath Farms:

Pat, Beverly, Jarrod, Missy, Jason,
Tiffany, Weston, Meredith, Jaycie,
Cody and Ty Heath



Kentucky Bicentennial Family Farm

Santa Gertrudis Cattle

387 Goodin Williams Road

Hodgenville, Kentucky

Ph. 270-358-4820

Cell 270-735-2470



Thank you to all our recent buyers and for your
support of the Kentucky Jr. Santa Gertrudis Association.

Santa Gertrudis Purebred & Star Five Cattle for Sale

WHY IT'S MY BANK

It's all about
good people and
great service.



WMB Wilson & Muir
Bank & Trust Co.
www.WilsonMuirBank.com
270.259.4001

Parker Farms



Breeders of Quality
Santa Gertrudis Cattle

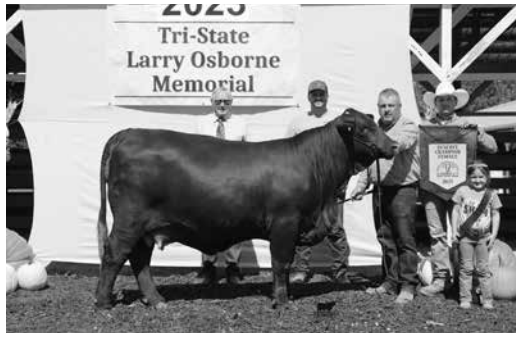
Charles, Deanna,
Chip, June & Carsen Parker

5552 Jackson Hwy.
Cave City, KY 42127

(270) 590-9400 • (270) 670-6285
parkerfarms@scrtc.com



2024 District 6 Larry Osborne Memorial SGBI Point Show September 13, 2024 | Corydon, IN



To enter contact **Darren Richmond**
423-364-9281 | djrichmd@gmail.com

Show Chairman
Cody Mattingly | 270-668-3177

Entry deadline September 1st
Judge: **Will Banks**

RICHMOND MARKETING SERVICE



Upcoming Events

July 19-20, 2024 Kentucky National Show & Sale
Bowling Green, KY

September 13, 2024 District 6 Show & Sale
Corydon, IN

October 5, 2024 Alabama Connection Sale
Cullman Stockyards - Cullman, AL

November 2, 2024 Mountain Laurel Classic Sale
Calhoun, GA



Sales Management, Photography & Video

Darren Richmond • 78 Creek Ct. Ringgold, Ga. 30736 • 423-364-9281 • djrichmd@gmail.com

**BLUE GRASS STOCKYARDS
CAMPBELLSVILLE, LLC**

P.O. Box 509 • 265 Airport Road
Campbellsville, KY 42719



Auction

10:00 AM EST Wednesday
10:00 AM EST Saturday

Special Cow/Calf Sale
1st Friday of Each Month
7:00 PM

Ronnie Choate

Office: 270-465-4051
Fax: 270-465-9672
Home: 270-369-7653
Cell: 270-766-8240

LaRue County Farm Bureau

606 N Lincoln Blvd
Hodgenville, KY 42748
(270) 358-3178


KENTUCKY FARM BUREAU



BIG ON COMMITMENT

R. Price Smith
Agency Manager


Patty Holbert
Agent

**LINCOLN
NATIONAL BANK**

HODGENVILLE BARDSTOWN
(270) 358-4562 | (502) 348-4562

MYLNB.COM

Member **FDIC**  EQUAL HOUSING LENDER

SOUTHERN STATES



Clint Merritt
Manager
Office: 270-358-3143

**SOUTHERN STATES
COOPERTIVE, INC**

Hardin Coop-Hodgenville Branch
310 West Water Street
Hodgenville, Kentucky 42748

www.SouthernStates.com



NOTES



NOTES

SALE TERMS & CONDITIONS

Except for those stated in the below terms and conditions, there are no warranties, either expressed or implied, as to the merchantability or fitness for a particular purpose with respect to the cattle being sold at this auction.

TERMS: Terms of sale are cash or check payable at sale location.

DISPUTES: Each animal will be sold to the highest bidder. In case of disputes, bidding will be re-opened between the parties involved.

HERD HEALTH: Each animal must have an individual health certificate indicating a clean test for Brucellosis (Bangs) and Tuberculosis (TB) within 30 days of the sale. Cattle from certified and accredited herds do not require tests, but an interstate certification of veterinary inspection (ICVI) is still required.

PURCHASER'S RISK: Each animal becomes the risk of the purchaser as soon as sold. Animals will be cared for at the purchaser's risk for a reasonable length of time.

ANNOUNCEMENTS: Announcements from the auction block will take precedence over the printed matter in this catalog. Buyers are therefore cautioned to pay attention to any such announcements.

BREEDERS GUARANTEE: Cows represented as being pregnancy tested "safe in calf" have been examined and declared safe by a licensed veterinarian and will be accompanied by a veterinarian's certificate to this effect. They are considered breeders without further guarantee. Cows with calves at side shall be considered breeders also without further guarantee. Cows and heifers represented as "bred" are not guaranteed safe in calf, but they and open heifers selling as individual lots are guaranteed breeders. No guarantee shall apply to suckling calves. No guarantee is given that a pregnant female will deliver live calves or that she will carry calves full term. The seller is not responsible for damages caused by foreign bodies after the animal has been sold and for sickness not apparent at sale time. Bulls sell with satisfactory semen test within 30 days of sale.

ACCIDENTS: Although every precaution will be taken to protect the safety and comfort of buyers, neither the Sales Management, Auctioneer nor seller assumes any responsibility in this manner and denies any liability, legal or otherwise, in the event of accident or loss of property.

LIABILITY: The Sales Management and/or Auctioneer has been employed by the consignor(s) of the animals being sold solely for the purpose of advertising and conducting the subject sale. All information regarding the subject animals as published in the sale brochure and as announced at the sale is based on the representation made to the Sales Management and/or Auctioneer by the consignor(s). The Sales Management and/or Auctioneer has not made any independent investigation to verify title, health, registration and lien status of the subject animals. The Sales Management and/or Auctioneer make no representations, either expressed or implied, as to whether or not the subject animals are security under any lien, legal or equitable.

SANTA GERTRUDIS DISTRICT VI BREEDERS



CONQUISTADOR

#20223332
1524K11
2/6/2022

**CONVENTIONAL
SEMEN AVAILABLE!**

\$80/Straw
25 straw's or more
\$100/Straw
less than 25 straws

ALSO SEXED SEMEN

\$200/Straw
limited availability

**Purchased at the 2023
Tri-Star sale for \$32,000.
Owned with 777 Farm's , Zajic
Farm's and Briggs Ranches.
Contact any of us for
semen orders!**



BX

BRIGGS RANCHES

Joe Jones, Manager (361) 550-0994
Tol Cawley (936) 581-1174
briggsranches@hotmail.com



ZAJIC FARMS

Matt Zajic (214) 801-8908
matt.zajic@gmail.com



MATTINGLY FARMS

Cody Mattingly (270) 668-3177
Roger Mattingly (270) 668-2776
mattinglyfarms96@yahoo.com

**777
FARMS**

777 FARMS

Chad & Jamie Daniel and Family
(870) 904-3070 • (479) 206-9199
triple7farms@gmail.com

**CEDAR CREEK
Farms**

JEWETT BORDEN
Shepardsville, Ky.
(502) 718-5441 jewett.borden@yahoo.com

MATTINGLY FARMS
CODY MATTINGLY
Roger, Ivey, Whitney & Chase
514 Liberty Rd.
Battletown, Ky. 40108
(270) 668-3177
mattinglyfarms96@yahoo.com

OSBORNE LIVESTOCK

Todd, Donna, Dalton & Ashley Osborne
Sparta, Ky. • Lathrop, Mo.
(859) 991-2438
peppydoc1@aol.com

**Parker
Farms**

parkerfarms@scrtc.com
Charles, Deanna, Chip, June & Carsen Parker
5552 Jackson Hwy. • Cave City, KY 42127
(270) 670-6285 • (270) 670-6776

RED VIEW FARMS
5480 Jordan Village Rd.
Poland, IN 47868
(812) 829-8053
craiglopossa@yahoo.com

WindCrest Farm
John & Nolan Taylor
REGISTERED SANTA GERTRUDIS CATTLE
Gertguys@NCTC.com
1238 Claggett Rd. (270) 734-1670
Leitchfield, Ky. 42754 Herd No. 1431



Richmond Marketing Service
78 Creek Ct.
Ringgold, Ga. 30736

46th KENTUCKY NATIONAL *Show & Sale*

JULY 19 & 20, 2024
BOWLING GREEN, KY
United Producers Inc. Stockyards

