



SANTA GERTRUDIS

**BREEDERS
OF THE CAROLINAS**



**NEW
LOCATION!**
Union County Agri Center
Monroe, N.C.

51st Annual

BREEDERS OF THE CAROLINAS SALE

May 11, 2024 • 11 a.m. EST

Union County Agri Center, Monroe, N.C. *(new location!)*

**REGISTERED & SANTA GERTRUDIS-
INFLUENCED LOTS**

**OVER
100**

**Pairs, Bred & Open Heifers and
a Select Group of Bulls**

SALE MANAGER

Darren Richmond (423) 364-9281

djrichmd@gmail.com

SALE COMMITTEE

Tony Creech (919) 427-4679

Josh Bowman (336) 215-4774

Dennis Lee (336) 202-4138

Jody Standley (919) 291-4212

**TO CONSIGN &
CATALOG REQUESTS**

Darren Richmond (423) 364-9281

djrichmd@gmail.com

This sale will be broadcast live on the internet.

DVAuction

Broadcasting Real-Time Auctions

Real time bidding & proxy bidding available.



For more information, please visit our website
www.sgbreedersofthecarolinas.com

Creech Farms

Santa Gertrudis Cattle with built in Performance & Phenotype



Herd Sire SR 634F1



Performance Tested Bulls For Sale

Creech Farms

12483 NC 39 Zebulon, NC

Tony | 919.427.4679

Brandon | 919.761.3894

CF

Cattle for Sale at all times.

51st Annual

BREEDERS OF THE CAROLINAS SALE

Saturday, May 11, 2024 | 11 am

Union County Agri Center | 307 Cultivation Circle Monroe, NC

President

Josh Bowman
336-215-4774

Sale Manager

Darren Richmond
423-364-9281
djrichmd@gmail.com

Ring Men

Will Thompson
704-616-8553

Brent Shaw
205-412-5761

Auctioneer

E. B. Harris
252-430-9595

**Sale Committee
Members**

Tony Creech
Josh Bowman
Dennis Lee
Jody Standley

Sale Facility Address

Union County Agri Center
307 Cultivation Circle
Monroe, NC

Accommodations

Quality Inn 704-283-9600
Comfort Inn 704-845-5911
Sleep Inn 704-841-1660

Checkout videos at DVAuction.com

SCHEDULE OF EVENTS

Friday, May 10, 2024

12:00 pm - Cattle Arrive

6:00 pm - Annual Dinner &
Membership Meeting
(Sale Facility)

Guest Speakers

Chris McClure
SGBI Executive Director

Saturday, May 11, 2024

8 am - Cattle Viewing
11 am - Sale



Facebook/Darren Richmond
Look for Sale Updates and Videos

Visit Santa Gertrud's Breeders of the
Carolinas website and make sure to like
us on Facebook!
www.sgbreedersofthecarolinas.com

CONSIGNORS

Creech Farm
Zebulon, NC
919-427-4679

Bar M Farm
Lenior, NC
828-493-2266

Black Tip Cattle Co
Greensboro, AL
954-553-2733

Five J Cattle Beef
Clayton, NC
919-291-4212

Grandview Farm
Hamilton, AL
205-412-5761

D Bar Z Cattle Co
Clayton, NC
919-608-8882

Triple C Cattle Co
Ocean Isle, NC
910-269-7717

Flatwillow Farm
Statesville, NC
704-682-4496

Hiss Family Farm
Columbia City, IN
260-503-5310

K&C Farm
Staley, NC

Lou Al Tuck Farm
Great Falls, SC
803-374-2678

MC Ranch
Alpharetta, GA
404-630-1142

Stephen Perry Farm
Zebulon, NC
919-625-9652

Ward Farm
Hartselle, AL
256-758-7000

Fuego LLC
Los Ranchos, NM
530-392-0152

Rocking L Farm
Siler City, NC
336-202-4138

RW Farm
Benson, NC
919-902-1003

DVAuction
Broadcasting Real-Time Auctions

www.dvauction.com

Watch & Bid Online* for FREE!

Can't make the sale?

Let DVAuction bring the sale to you!

Busy during the sale?

Let DVAuction represent your bid!

Visit www.dvauction.com and register!

It's as easy as 1, 2, 3...

1. Create an account at www.dvauction.com under the "create new account" tab.
2. Apply for bidding by clicking "apply for bidding" in the upper left corner of your screen at least 24 hours prior to the auction.
3. Tune into the sale and make your purchase!

For general questions, please contact the DVAuction office: (402) 316-5460 or email support@dvauction.com

**High speed internet access required*



CREECH 382-1

Consigned by: Creech Farm

Bred Cow Reg. #20210965 DOB: 05/17/2021

SR GENESIS 75/3	LJV MASON 0/72 SR ARKOMA 30/0
SILVA 634/7	LR CODE RED 45/353 SILVA 2X257/1
SR GENESIS 75/3	LJV MASON 0/72 SR ARKOMA 30/0
SR T21	RDF SANCHO'S NEVER BEFORE 1136 P H WELDER 7/342

SR 634/F1

Reg. #20181936

SR 57/19

Reg. #20190189

Weights		EPDs								
BW	YW	BW	WW	YW	Milk	TM	HCW	MARB	REA	SC
	820	0.0	13	16	-5	5	-1	-0.04	-0.07	0.39

Balanced Index: 25% | Cow/Calf Index: 25% | Terminal Index: 30%

Stout Linebred Strait Ranches female going back to Genesis and Mason 0/72. Strong topline with an excellent udder, check out her heifer calf 484-3 sired by CA/RDF Mateo. Cow sells bred back to Hefte Ranch G70 r# 20191558. Selling choice: take the bred cow or the Open Heifer or keep the family together.



CREECH 484-3

Consigned by: Creech Farms

Open Heifer Reg. #20232851 DOB: 09/03/2023

RED DOC DINERO 4088 KR 189/11
RDF BONITA 8017

CA/RDF MATEO 7238

Reg. #20174206

RED DOC 4009 HF FRED 390/1
RDF 9177

SR 634/F1 SR GENESIS 75/3
SILVA 634/7

CREECH 382-1

Reg. #20210965

SR 57/19 SR GENESIS 75/3
SR T21

Weights		EPDs								
BW	YW	BW	WW	YW	Milk	TM	HCW	MARB	REA	SC
		-0.9	17	21	-3	9	4	0.13	0.13	0.37

Balanced Index: 20% | Cow/Calf Index: 25% | Terminal Index: 15%

Check out this Baby Doll sired by CA/RDF Mateo and out of a Strait Ranches linebred dam. This young female has the phenotype along with the EPD profile exhibiting 7 traits in the top 25% along with a top 15% for BW. Selling choice: take the bred cow or the Open Heifer or keep the family together.



CHREECH 230-8

Consigned by: Creech Farms

Bred Cow Reg. #20185168 DOB: 08/23/2018

RDF SANCHO'S NEVER BEFORE 1136	RDF SANCHO 7-216 CA3194
LIBERTY RANCH 53/324	WR CHALLENGER L230 GRAY OAKS 324
PAYDAY 0049	WENDT GERONIMO 3983 BLACK WARRIOR FARM 6/8
CHEEKS 7498/3	GRIZZLY'S LUCKY 13 13/9 WENDT 7498

CREECH NEVER AGAIN 911-4

Reg. #20141179

CREECH 701

Reg. #1266229

Weights		EPDs								
BW	YW	BW	WW	YW	Milk	TM	HCW	MARB	REA	SC
65	922	0.0	14	17	0	11	3	-0.17	0.11	0.22

Balanced Index: 45% | Cow/Calf Index: 60% | Terminal Index: 40%

Take a look at this deep bodied big hipped Never Before 1136 granddaughter. Her EPD profile has 5 traits in the breeds top 25%. Check out her Polled Herd Sire Prospect bull calf CF 492-3 sired by Hefte Ranch G70. Cow sells AIed to Never Before 1136 with heifer semen on 11/28/23 later exposed to Hefte Ranch G70 r# 20191558. Selling choice: take the bred cow or the Bull calf or keep the family together.



CREECH 492-3

Consigned by: Creech Farms

Bull Reg. #20232857 DOB: 09/13/2023

KR 191/13

KR 97/10
KR 517/04 1A

HEFTE RANCH G70

Reg. #20191558

HEFTE RANCH D122

ROSE HILL SAM HOUSTON 831
MUSCLES W53

CREECH NEVER AGAIN 911-4

RDF SANCHO'S NEVER BEFORE 1136
LIBERTY RANCH 53/324

CHREECH 230-8

Reg. #20185168

CREECH 701

PAYDAY 0049
CHEEKS 7498/3

Weights		EPDs								
BW	YW	BW	WW	YW	Milk	TM	HCW	MARB	REA	SC
		0.1	13	17	1	11	5	0.02	0.13	0.41

Balanced Index: 35% | Cow/Calf Index: 35% | Terminal Index: 35%

Don't miss this Polled young Herd Sire Prospect sired by Hefte Ranch G70 and goes back to Never Before 1136 on his dams side. Talk about a stout bull calf, he can be your next herd sire! Selling choice: take the bred cow or the Bull calf or keep the family together.



WOOD 18/20

Consigned by: Creech Farms

Bred Cow Reg. #20204160 DOB: 03/29/2020

RDF SANCHO'S NEVER BEFORE 1136 RDF SANCHO 7-216
CA3194

RW NEBO 8/17

Reg. #20173801

4/15 REBECCA

CREECH 904
9/7 PEARL

8/13 WOOD

RW SASSY 6/18

Reg. #20181263

9/7 PEARL

CREECH 904
CREECH 107

INGOLD'S LEO 74/2
49 R.W. FARM

Weights		EPDs								
BW	YW	BW	WW	YW	Milk	TM	HCW	MARB	REA	SC
60	740	1.2	11	11	-5	4	-3	-0.07	0.00	0.37

Balanced Index: 75% | Cow/Calf Index: 90% | Terminal Index: 60%

Another stout Never Before 1136 granddaughter, that's also goes back to Creech and Wood Farm genetics. She sells with her young herd sire prospect sired by Hefte Ranch G70. Cow sells Aled on 11/29/23 to RDF ET AL FIN R# 20217619 and later exposed to Hefte Ranch g70 r# 20191558.



CREECH 489-3

Consigned by: Creech Farms

Bull Reg. #20232855 DOB: 09/11/2023

KR 191/13

KR 97/10
KR 517/04 1A

HEFTE RANCH G70

Reg. #20191558

HEFTE RANCH D122

ROSE HILL SAM HOUSTON 831
MUSCLES W53

W NEBO 8/17

RDF SANCHO'S NEVER BEFORE 1136
4/15 REBECCA

WOOD 18/20

Reg. #20204160

RW SASSY 6/18

8/13 WOOD
9/7 PEARL

Weights		EPDs								
BW	YW	BW	WW	YW	Milk	TM	HCW	MARB	REA	SC
		1.2	13	15	-3	7	0	0.05	0.06	0.48

Balanced Index: 55% | Cow/Calf Index: 55% | Terminal Index: 50%

Don't miss this Polled young Herd Sire Show Prospect sired by Hefte Ranch G70 and goes back to Never Before 1136 on his dams side. Talk about a stout bull calf, he can be your next herd sire or Show string addition! Selling choice take the bred cow or the Bull calf or keep the family together.





CREECH 207-8

Consigned by: Creech Farms

Bred Cow Reg. #20181477 DOB: 03/15/2018

FC PISTOL 28/0

GUNSLINGER 13/5
HOLLY 20/3

CREECH 100-4

Reg. #20141175

HARDING 437/2

HARDING 303/9
MISS BRANDON P267

STRETCH 52

SUMMERHILL SNUFFY 030
SUMMERHILL SANDY 259

HARRIS FARMS 42/8

Reg. #1272585

25 RANCH 4196

25 CHAPS DOUBLE 0 NINE 009
WENDT 7764

Weights		EPDs									
BW	YW	BW	WW	YW	Milk	TM	HCW	MARB	REA	SC	
75	844	0.5	18	20	5	18	1	-0.10	0.08	0.48	

Balanced Index: 30% | Cow/Calf Index: 25% | Terminal Index: 35%

Another proven producer, she goes back to Pistol and Gunslinger on the top side and Harris Farms genetics on the bottom side. Check out her impressive EPD profile with 6 traits in the top 20% along with a top 4% for TM. Sells with her heifer calf 503-3 sired by Hefte Ranch D25. Cow sells exposed back to D25 11/11/23 TO 2/3/24 then later to Hefte Ranch G70 to sale date. Selling choice take the bred cow or the Open Heifer or keep the family together.



CREECH 503-3

Consigned by: Creech Farms

Open Heifer Reg. #20232868 DOB: 10/04/2023

HARCO 1323

HARCO T956 (ET)
HARCO T720 (ET)

HEFTE RANCH D25

Reg. #20160227

HEFTE RANCH A88

SJ TANKER 818
MANITOU IV 54/07

CREECH 100-4

FC PISTOL 28/0
HARDING 437/2

CREECH 207-8

Reg. #20181477

HARRIS FARMS 42/8

STRETCH 52
25 RANCH 4196

Weights		EPDs									
BW	YW	BW	WW	YW	Milk	TM	HCW	MARB	REA	SC	
		1.3	25	35	6	23	9	-0.04	0.19	0.39	

Balanced Index: 15% | Cow/Calf Index: 5% | Terminal Index: 30%

If you are looking to add Production and performance to your herd, take a look! This young open heifer sired by Hefte Ranch D25 can do the job, with 6 traits in the breeds top 10%, with WW,YW,MK and TM in the top 5%. Selling choice: take the bred cow or the Open Heifer or keep the family together.



CREECH 408-2

Consigned by: Creech Farms

Bred Heifer Reg. #20220430 DOB: 03/05/2022

KR CATALYST 531/15

KR 225/10
KR 310/12 2YO

SR SURGE 4/19

Reg. #20190137

SR ARKOMA 30/0

MR WINROCK N127
PERNER D 931

RED DOC ROUGHNECK 6224

KR 1130/13
RED DOC 2119

CREECH 330-0

Reg. #20200711

CREECH 126-5

HF FRED 460/3
CREECH 804

Weights		EPDs									
BW	YW	BW	WW	YW	Milk	TM	HCW	MARB	REA	SC	
		-1.0	5	7	-5	1	0	0.26	0.10	0.52	

Balanced Index: 20% | Cow/Calf Index: 15% | Terminal Index: 25%

Take a look at this stout square hipped feminine cow prospect. Sired by SR Surge going back to KR Catalyst on the top side and her dam goes back to Red Doc Roughneck. Look at her impressive EPD profile 6 traits in the top 25%, with Top 4% for BB, Top 10% Marbling and Top 15% for BW. She sells bred to Hefte Ranch G70 r# 20191558.



CREECH 462-2

Consigned by: Creech Farms

Bred Heifer Reg. #20223073 DOB: 11/06/2022

CA/RDF SALVADOR 6272

36/3
RED DOC 2162

BRIGGS 906G

Reg. #20193008

CA 906

DB 121/7
4/11

CB CIMARRON 333

SR DAKOTA 879
CF CINDY 9-7

GRAY OAKS 631

Reg. #20162535

CB 511

CREE XMAS CHUNK 810
HINNANT & FULBRIGHT 7/2

Weights		EPDs									
BW	YW	BW	WW	YW	Milk	TM	HCW	MARB	REA	SC	
820		0.5	11	20	3	12	3	0.03	0.08	0.32	

Balanced Index: 45% | Cow/Calf Index: 50% | Terminal Index: 35%

Another Big Stout bred heifer sired by Briggs Ranches 906G that goes back to Gray Oaks and CB Cimarron on the dams side. Don't miss her EPD profile with 5 traits in the top 30% along with a Top 15% for Milk. She sells bred to Hefte Ranch G70 r# 20191558.



CREECH 463-2

Consigned by: Creech Farms

Bred Heifer Reg. #20223074 DOB: 11/11/2022

KR651/18(CHOSEN ONE)

KR1195/15

DSR CHERRY 923 1B

QVF CHOSEN ONE 448H4

Reg. #20200353

GRAY OAKS 448

HATCHET 150

CIRCLE A MAGGIE ET 110

SR 102/3

RDF SANCHO'S NEVER BEFORE 1136

SR 62/1

SR 82/6

Reg. #20164745

SR 11/3

RDF MACHO MAN 0088

SR 85/0

Weights		EPDs									
BW	YW	BW	WW	YW	Milk	TM	HCW	MARB	REA	SC	
0	800	0.4	23	27	-2	13	3	0.02	0.04	0.44	

Balanced Index: 25% | Cow/Calf Index: 30% | Terminal Index: 20%

This Polled bred heifers pedigree is a Whos Who! King Ranch Chosen One, Hatchet 150 and Never Before 1136. Not only does she have the phenotype she puts together and impressive set of EPD's. 6 traits in the top 20% with top 15% for WW and YW. She sells bred to Hefte Ranch G70 r# 20191558.



CREECH 439-2

Consigned by: Creech Farms

Bred Heifer Reg. #20220422 DOB: 02/27/2022

KR 1131/13

BOND 007/RSR 007

KR 704R/10 704/10 F1

WENDT 9386

Reg. #20203887

WENDT 788

WENDT 7818

WENDT 9762

KR CATALYST 531/15

KR 225/10

KR 310/12 2YO

SR 45/20

Reg. #20200257

SR 106/6

LJV MASON 0/72

TF 384

Weights		EPDs									
BW	YW	BW	WW	YW	Milk	TM	HCW	MARB	REA	SC	
		-0.5	12	31	-7	3	11	0.12	0.20	0.66	

Balanced Index: 10% | Cow/Calf Index: 10% | Terminal Index: 10%

Another Stout bred heifer sired by Wendt Ranch 9386 and she goes back to King Ranch Catalyst and Strait Ranch genetics on her dams side. Check out her Solid EPD's Top 10% for YW, Top 2% for scrotal and Top 10% for Breed Back. She sells bred to Hefte Ranch G70 r# 20191558.



CREECH 444-2

Consigned by: Creech Farm

Bred Heifer Reg. #20223055 DOB: 09/09/2022

RED DOC DINERO 4088

KR 189/11

RDF BONITA 8017

CA/RDF MATEO 7238

Reg. #20174206

RED DOC 4009

HF FRED 390/1

RDF 9177

HF FRED 460/3

CSC FRED 8-5

HARDING 270/8

CREECH 126-5

Reg. #20155823

CREECH 804

GUNSLINGER 13/5

TF 520

Weights		EPDs									
BW	YW	BW	WW	YW	Milk	TM	HCW	MARB	REA	SC	
	808	-0.4	10	8	-1	8	-5	0.25	0.06	0.34	

Balanced Index: 35% | Cow/Calf Index: 55% | Terminal Index: 25%

Take a look at this CA/RDF Mateo bred heifer, that's goes back to Harding Fred 460/3 on her dams side. Don't miss her Top 10% EPD for Marbling. She sells bred to Hefte Ranch G70 r# 20191558.





CREECH 453-2

Consigned by: Creech Farm

Bull Reg. #20223064 DOB: 09/20/2022

KR 191/13

KR 97/10
KR 517/04 1A

HEFTE RANCH G70

Reg. #20191558

HEFTE RANCH D122

ROSE HILL SAM HOUSTON 831
MUSCLES W53

CREECH 100-4

FC PISTOL 28/0
HARDING 437/2

CREECH 235-8

Reg. #20185175

CREECH MAOLA 104-4

RDF SANCHO'S NEVER BEFORE 1136
DOUBLE C 8-21

Weights		EPDs								
BW	YW	BW	WW	YW	Milk	TM	HCW	MARB	REA	SC
988		0.6	16	20	0	11	4	0.08	0.09	0.53

Balanced Index: 35% | Cow/Calf Index: 40% | Terminal Index: 35%

This Hefte Ranch G70 Polled son is ready to go to work! This stout herd sire prospect goes back to FC Pistol and Never Before 1136 on his dams side. Check out his solid EPD profile with 7 traits in the breeds top 30%. Sells semen tested and ready to improve your Herd!



FIVE J'S 04/23

Consigned by: Black Tip Cattle Co

Bull Reg. #20230153 DOB: 01/07/2023

RDF SANCHO'S NEVER BEFORE 1136 RDF SANCHO 7-216
CA3194

RED DOC NEVER SANK 5012

Reg. #20153072

RED DOC 3001

O/X 752
RDF 6-169

KR 191/13

KR 97/10
KR 517/04 1A

WR 427H

Reg. #20205739

BRIGGS 570/11

BRIGGS 546/4
BRIGGS 024/5

Weights		EPDs								
BW	YW	BW	WW	YW	Milk	TM	HCW	MARB	REA	SC
74		-0.5	13	14	-6	4	2	0.06	0.09	0.34

Balanced Index: 50% | Cow/Calf Index: 80% | Terminal Index: 30%

Here's your opportunity to own an own son of Never Sank 5012 , that goes back to Wiley Ranch, King Ranch 97/10 and Briggs Ranches genetics, he sells semen and trich tested and ready to go to work in your herd.



FIVE JS 3077

Consigned by: 5J's Beef & Cattle Co

Star 5 Bull Reg. #20235258 DOB: 03/16/2023

RDF SANCHO'S NEVER BEFORE 1136 RDF SANCHO 7-216
CA3194

RED DOC NEVER SANK 5012

Reg. #20153072

RED DOC 3001

O/X 752
RDF 6-169

HEREFORD (POLLED)

HEREFORD (POLLED)
HEREFORD (POLLED)

HEREFORD (POLLED)

HEREFORD (POLLED)

HEREFORD (POLLED)
HEREFORD (POLLED)

Weights		EPDs								
BW	YW	BW	WW	YW	Milk	TM	HCW	MARB	REA	SC
71										

Balanced Index: 45% | Cow/Calf Index: 50% | Terminal Index: 40%

Each year Five J's Cattle keeps the very top end of their Star 5 Bulls, this young man is from that group. Sired by Santa Gertrudis Bull Never Sank 5012 and out of one of 5J's Proven Polled Hereford cows. If you looking to add Hybrid Vigor to your herd take a look! Sells Semen tested.



HEFTE RANCH H03

Consigned by: 5J's Beef & Cattle Co

Bred Cow Reg. #20197021 DOB: 10/28/2019

HARCO 1323

HARCO T956 (ET)

HARCO T720 (ET)

HEFTE RANCH D25

Reg. #20160227

HEFTE RANCH A88

SJ TANKER 818

MANITOU IV 54/07

RED DOC NEVER SANK 5012

RDF SANCHO'S NEVER BEFORE 1136

RED DOC 3001

HEFTE RANCH F04

Reg. #20175253

HEFTE RANCH D136ET

RPV 7/0 RPV7/0

LIZZY 54/06

Weights			EPDs							
BW	YW	BW	WW	YW	Milk	TM	HCW	MARB	REA	SC
63	702	0.2	13	19	2	12	5	-0.07	0.13	0.36

Balanced Index: 40% | Cow/Calf Index: 30% | Terminal Index: 45%

Look at this opportunity to get in the High End Star 5 program, H03 is sired by Hefte Ranch D25 and her dam is an own daughter of Never Sank 5012. She sells bred to one of our High Profile Hereford Bulls COLORADO, this mating should produce a possible Star 5 Show Prospect. Pregnancy status sale day!



KUBECKA 32/19

Consigned by: D Bar Z Cattle Co

Bred Cow Reg. #20198243 DOB: 02/01/2019

RDF SANCHO'S NEVER BEFORE 1136

RDF SANCHO 7-216

CA3194

RED DOC NEVER SANK 5012

Reg. #20153072

RED DOC 3001

O/X 752

RDF 6-169

ROCK HILL 406 406/11

X-FACTOR 308 308/7

SOUTHERN BREEZ 275/4

ROCKHILL 506

Reg. #20144550

ROCKHILL 314 314/7

GRAY OAKS 363

MISS MASSIVE MT TRIPP D525

Weights			EPDs							
BW	YW	BW	WW	YW	Milk	TM	HCW	MARB	REA	SC
68		-0.9	8	0	0	8	-4	-0.01	-0.01	0.35

Balanced Index: 60% | Cow/Calf Index: 80% | Terminal Index: 40%

We have all seen what these Never Sank daughters have produced and here's your chance to add one to your Herd. She sells bred to 5J Jack of All Traits r# 20202755. Due to calve soon after sale date.





KUBECKA 4/19

Consigned by: D Bar Z Cattle Co

Bred Cow Reg. #20198238 DOB: 02/21/2019
RDF SANCHO'S NEVER BEFORE 1136 RDF SANCHO 7-216
CA3194

RED DOC NEVER SANK 5012

Reg. #20153072

RED DOC 3001 O/X 752
RDF 6-169

ROCK HILL 406 406/11

X-FACTOR 308 308/7
SOUTHERN BREEZ 275/4

ROCK HILL 480

Reg. #20133252

3D JOYCE 931

TOP GUN'S NAVAGATOR 5T1
MISS GRANDVIEW 566

Weights		EPDs								
BW	YW	BW	WW	YW	Milk	TM	HCW	MARB	REA	SC
65		-0.6	8	-1	-1	7	-5	-0.02	-0.02	0.33

Balanced Index: 65% | Cow/Calf Index: 85% | Terminal Index: 45%

We have all seen what these Never Sank daughters have produced and here's your chance to add one to your Herd. She sells bred to 5J Jack of All Traits r# 20202755. Due to calve soon after sale date.



D BAR Z L02

Consigned by: D Bar Z Cattle Co

Open Heifer Reg. #20234955 DOB: 04/26/2023

HEFTE RANCH F14 TOMCAT

KR 921/15

HEFTE RANCH D140ET

HEFTE RANCH H79

Reg. #20201438

HEFTE RANCH F90

KR 1269/14 GALAN
HEFTE 704

RED DOC NEVER SANK 5012

RDF SANCHO'S NEVER BEFORE 1136
RED DOC 3001

KUBECKA 32/19

Reg. #20198243

ROCKHILL 506

ROCK HILL 406 406/11
ROCKHILL 314 314/7

Weights		EPDs								
BW	YW	BW	WW	YW	Milk	TM	HCW	MARB	REA	SC
71		-0.7	9	7	3	11	-2	0.06	-0.02	0.31

Balanced Index: 45% | Cow/Calf Index: 50% | Terminal Index: 45%

Take a look at this Hefte Ranch H79 daughter that goes back to F14 Tomcat on the top side and her dam Kubecka 32/19 also sells in today's sale as Lot 14. Sells open and ready to bred to the bull of your choice.



FLATWILLOW 462

Consigned by: Flatwillow Farms

Open Heifer Reg. #20230457 DOB: 03/10/2023

HARRIS DOUBLE WIDE 18/2

JP COUCH 306C

HARRIS FARMS 42/8

BIG SHOW 129-5

Reg. #20155824

CREECH 215

GUNNIE 803

LIBERTY RANCH 53/324

CREECH 113-5

GUNNIE 803

HARDING 162/7

FLATWILLOW 369

Reg. #20185475

FLAT WILLOW LUCY 243

FLATWILLOW NITRO 170

FLATWILLOW 55 55/1

Weights		EPDs								
BW	YW	BW	WW	YW	Milk	TM	HCW	MARB	REA	SC
70		1.6	7	11	1	8	-5	-0.06	-0.04	0.30

Balanced Index: 85% | Cow/Calf Index: 75% | Terminal Index: 90%

Baby Doll, Baby Doll, Baby Doll. This is a Polled Big Show daughter, Big Show has sired numerous show heifers for us and this heifer needs a halter! Perfect topline and underline! Show Prospect or High End replacement she is a Keeper, Sells open.



FLATWILLOW 421

Consigned by: Flatwillow Farms

Bred Heifer Reg. #20213215 DOB: 04/20/2021

FLATWILLOW MERLIN 150 PATRIOT 766/0
SEQUATCHIE VALLEY SA 10/0

FLATWILLOW ENDEAVOR

Reg. #20132110

DOUBLE C FARMS 4-146

WENDT 4443
DOUBLE C FARMS 6/47

CIRCLE A ROWDY 50

MC NUGGET 56/6
CHF COLETTE 713

FLAT WILLOW LIPSTICK 172

Reg. #1275271

FLATWILLOW FARMS 65/1

CHEROKEE WHIRLWIND 6A39
FLATWILLOW FARMS 35/9

Weights		EPDs									
BW	YW	BW	WW	YW	Milk	TM	HCW	MARB	REA	SC	
83		1.5	-1	-1	-5	-2	-11	-0.08	-0.06	0.35	

Balanced Index: >95% | Cow/Calf Index: >95% | Terminal Index: >95%

This heifer is slick polled Endeavor daughter, he carries Patriot, Wendt 4443 and Double C Farms genetics. Her the bottom side she boasts Old Time MC Nugget and Cherokee genetics. Talk about longevity, Her dam is 16 yrs old and just weaned another calf. 421 sells exposed to Creech's Big Show r# 20155824, pregnancy status at the sale.



FLATWILLOW 445

Consigned by: Flatwillow Farms

Bred Heifer Reg. #20220382 DOB: 03/20/2022

CREECH 113-5 GUNNIE 803
HARDING 162/7

HEAVY METAL 342

Reg. #20171158

FLATWILLOW 290

CHARLIE BROWN 211
FLATWILLOW DAISY 216

CREECH 113-5

GUNNIE 803
HARDING 162/7

FLATWILLOW 383

Reg. #20192195

FLATWILLOW 307

CIRCLE A ROWDY 50
FLAT WILLOW CANDY 240

Weights		EPDs									
BW	YW	BW	WW	YW	Milk	TM	HCW	MARB	REA	SC	
68		1.3	5	7	-3	4	-6	-0.13	-0.03	0.35	

Balanced Index: 95% | Cow/Calf Index: 90% | Terminal Index: 95%

This is a Heavy Metal daughter, double bred Creech genetics. Charlie Brown was a Shaker Hill son who has sired many of pour replacement heifers. She sells exposed to Creech's Big Show r# 20155824, pregnancy status at the sale.



FLATWILLOW 450

Consigned by: Flatwillow Farms

Bred Heifer Reg. #20226421 DOB: 06/11/2022

FLATWILLOW MERLIN 150 PATRIOT 766/0
SEQUATCHIE VALLEY SA 10/0

FLATWILLOW ENDEAVOR

Reg. #20132110

DOUBLE C FARMS 4-146

WENDT 4443
DOUBLE C FARMS 6/47

CREECH 904

GRAY OAKS 502 (ET)
DB 18/2

FLATWILLOW FAWN

Reg. #20132111

WOOD 5/11

GRAY OAKS 502 (ET)
DOUBLE C 8/24

Weights		EPDs									
BW	YW	BW	WW	YW	Milk	TM	HCW	MARB	REA	SC	
70		1.0	2	-1	-4	1	-10	-0.08	-0.06	0.30	

Balanced Index: 95% | Cow/Calf Index: 90% | Terminal Index: 95%

This young female has a much desired topline and underline. Another Polled, thick, deep bodied Endeavor daughter. She sells exposed to Creech's Big Show r# 20155824, pregnancy status at the sale.



FLATWILLOW 429

Consigned by: Flatwillow Farms

Bred Heifer Reg. #20213218 DOB: 08/14/2021

FLATWILLOW MERLIN 150 PATRIOT 766/0
SEQUATCHIE VALLEY SA 10/0

FLATWILLOW ENDEAVOR

Reg. #20132110

DOUBLE C FARMS 4-146

WENDT 4443
DOUBLE C FARMS 6/47

FLATWILLOW MERLIN 150

PATRIOT 766/0
SEQUATCHIE VALLEY SA 10/0

FLATWILLOW 288

Reg. #20141244

FLAT WILLOW LIPSTICK 172

CIRCLE A ROWDY 50
FLATWILLOW FARMS 65/1

Weights		EPDs									
BW	YW	BW	WW	YW	Milk	TM	HCW	MARB	REA	SC	
80		1.8	0	-1	-6	-2	-11	-0.08	-0.03	0.37	

Balanced Index: >95% | Cow/Calf Index: >95% | Terminal Index: >95%

Big Thick Cherry Red bred heifer, this polled beauty has a lot of bone to pass on to her offspring. Another Endeavor daughter that should make a solid brood cow. She sells exposed to Creech's Big Show r# 20155824, pregnancy status at the sale.





MISS GRANDVIEW 253K15 ET

Consigned by: Grandview Farms

Bred Heifer Reg. #20226613 DOB: 10/07/2022

KR1195/15

KR 545/12
KR 245/10 F1

KR651/18(CHOSE ONE)

Reg. #20183702

DSR CHERRY 923 1B

DS PHOENIX 611
DEAN-HARRIS 022/4 (ET)

SR PARADIGM 135/7

KR CATALYST 531/15
P H WELDER 7/342

QVF MS PARADIGM 253H10

Reg. #20205621

HARRIS FARMS 253D8

FC PISTOL 28/0
HARCO 1220

Weights		EPDs								
BW	YW	BW	WW	YW	Milk	TM	HCW	MARB	REA	SC
75		0.7	17	19	-2	10	2	0.16	0.12	0.44

Balanced Index: 15% | Cow/Calf Index: 4% | Terminal Index: 25%

Miss Grandview 253K15 is genetically loaded. She's a KR Chosen One 651/18 daughter out of MS Paradigm 253H10, the High Point Best of Polled female in 2022-23. Her built in phenotype is backed by a strong epd profile that will work for any progressive breeder. Sells exposed to Grandview 9115K5(20226606), our Little Annie 5100 and Jackpot 5369G8 bred Jr. herd sire. Proven genetics in a pretty package.



BM K131

Consigned by: Bar M Farm

Bred Heifer Reg. #20227935 DOB: 12/26/2022

FC PISTOL 28/0

GUNSLINGER 13/5
HOLLY 20/3

QVF PISTOL 60G8

Reg. #20190553

SR 60/3

LJV MASON 0/72
SR 10.0 10/0

BRIGGS 061/8

BRIGGS 065/4
DB 35/3

DOUBLE C 15/7

Reg. #20155027

DOUBLE C 7-29

TF 2139
DOUBLE C FARMS 0494

Weights		EPDs								
BW	YW	BW	WW	YW	Milk	TM	HCW	MARB	REA	SC
69		2.0	18	26	-2	11	0	0.03	0.05	0.58

Balanced Index: 50% | Cow/Calf Index: 65% | Terminal Index: 40%

K131,aPistolandMsYancy60/3granddaughtercomesfromaprovincowfamily.Atruebroodcowin the making. Sells Aled on 4/7/24 to Hefte Ranch G70. Pregnancy status announced at sale.



SHAMPAIN 18

Consigned by: MC Ranch

Pair w/ Heifer Calf Reg. #20215432 DOB: 06/01/2021

Briggs 506/14

BRIGGS 628/9
BRIGGS 554/0

069 BRIGGS 608E2

Reg. #20172592

BRIGGS 063/11

BRIGGS 035/6
BRIGGS RANCH 031/7

RED DOC 5363

36/3
RDF SIEGA 9180

SHAMPAIN 44

Reg. #20192068

BR QUEMADO BONITA

RED DOC 4079
BR JANUARY

Weights		EPDs								
BW	YW	BW	WW	YW	Milk	TM	HCW	MARB	REA	SC
70		-1.1	8	6	-4	3	-4	0.01	-0.03	0.29

Balanced Index: 55% | Cow/Calf Index: 70% | Terminal Index: 45%

MC 121 is a feminine and eye-catching first calf heifer. She sells with her polled heifer calf born March 24, 2024, MC 405, sired by Red Doc 8126. Show prospect alert! MC 121 has a balanced EPD package and strong pedigree of core MC Ranch and NuGen genetics! Quality female with a lot of life ahead of her.



MC 150

Consigned by: MC Ranch

Bred Heifer Reg. #20218243 DOB: 11/25/2021

MC 423 TOP GUN 244
ROCKY HAMMOCK 54/5

DIAMOND S MEGAN 515 DIAMOND S RANGER 146
DIAMOND S CARMAN 143

KR 189/11 KR 282/08
KR 363/5 5A

O/X EVE 762 O/X HIT MAN 722
O/X EVA 726

MC 417

Reg. #20143268

RED DOC 3103

Reg. #20133664

Weights		EPDs									
BW	YW	BW	WW	YW	Milk	TM	HCW	MARB	REA	SC	
74		0.0	6	10	-4	3	0	0.02	0.03	0.26	

Balanced Index: 65% | Cow/Calf Index: 85% | Terminal Index: 50%

MC 150 is the type you hesitate to sell but can't help but want to share with others! This polled female sells bred to by Red Doc 8126. MC 150 has tremendous length and top. She is the right kind for any program.



ROCKING L ELSIE 0623

Consigned by: Rocking L Farm

Open Heifer Reg. #20230247 DOB: 04/01/2023

RED DOC 5363 36/3
RDF SIEGA 9180

SHAMPAIN 89

Reg. #20201560

SHAMPAIN 28 638/14
FC 15/4

PC MR ROBERTO 915E12(ET) ROBERTO BRIGGS 072/13
SILVA 915/3

ROLLING OAKS LUNA

Reg. #20191589

ROLLING OAKS LOLA LF PAYCHECK
ROLLING OAKS LYLA

Weights		EPDs									
BW	YW	BW	WW	YW	Milk	TM	HCW	MARB	REA	SC	
70		-1.6	8	8	5	5	-1	0.07	0.00	0.21	

Balanced Index: 45% | Cow/Calf Index: 65% | Terminal Index: 30%

Check out Rocking L Elsie, sired by Shampain Ranch 89 that goes back to Red Doc Farm genetics and her dam Rolling Oaks Luna goes back to Roberto 072/13 and LF Paycheck. If your needing to add a low birth weight EPD to your herd check out her top 3%. Sells open.



ROCKING L VERA 0323

Consigned by: Rocking L Farm

Open Heifer Reg. #20230193 DOB: 02/17/2023

GRANDVIEW 209 RED HOT 4010
BRIGGS 003/99

GRANDVIEW 828

Reg. #20175579

1689 9T226 BROWN/BOLA HERDMAKER S3956
DOUBLE E FARMS 369 (ET)

JERNIGAN 3/11

JERNIGAN 713

Reg. #20172746

JERNIGAN 7/15 RDF SANCHO'S NEVER BEFORE 1136
JERNIGAN SR 204

Weights		EPDs									
BW	YW	BW	WW	YW	Milk	TM	HCW	MARB	REA	SC	
83		0.7	13	19	-1	9	2	0.12	0.05	0.29	

Balanced Index: 50% | Cow/Calf Index: 75% | Terminal Index: 30%

Take a look at Rocking L Vera, sired by Grandview 828 that goes back to Red Hot 4010, and her dam goes back to Jernigan Ranch genetics and Never Before 1136. Check out her Top 25% EPD for Marbling. Sells Open.



MC 147

Consigned by: Hiss Family Farm

Pair w/ Bull Calf Reg. #20218205 DOB: 10/01/2021

MC 423 TOP GUN 244
ROCKY HAMMOCK 54/5

DIAMOND S MEGAN 515 DIAMOND S RANGER 146
DIAMOND S CARMAN 143

MC MISSILE 220 MC ROCKET 183/8
MC 504/9

MC 526 MC 423
MC 238

MC 417

Reg. #20143268

MC 802

Reg. #20185546

Weights		EPDs									
BW	YW	BW	WW	YW	Milk	TM	HCW	MARB	REA	SC	
65		0.5	1	1	-1	3	-7	0.00	-0.03	0.43	

Balanced Index: 80% | Cow/Calf Index: 70% | Terminal Index: 85%

This polled well balanced female sells with a bull calf born 3/3/24 sired by Red Doc 8126. She is a great mother with a good utter.



WF84

Consigned by: Hiss Family Farm

Bred Cow Reg. #20226024 DOB: 05/11/2022

FC PISTOL 28/0 GUNSLINGER 13/5
HOLLY 20/3

GRAY OAKS 01ET

Reg. #20203824

CIRCLE A MAGGIE ET 110 MAGNUM 357
MISS LEGACY 10

RED DOC SANCHO ET 3318

GRAY OAKS 921

Reg. #20192638

GRAY OAKS 912 W H CREEL 344
CHEEKS 73/0

Weights		EPDs									
BW	YW	BW	WW	YW	Milk	TM	HCW	MARB	REA	SC	
67		1.0	18	15	-2	10	-3	-0.07	-0.01	0.45	

Balanced Index: 55% | Cow/Calf Index: 50% | Terminal Index: 60%

This dark red cow is deep and thick bodied, She has Pistol and Magnum 357 genetics on the top side and Gray Oaks and Red Doc Farms on the bottom side. She sells 5 plus months safe to DSR 1914 r# 20196319 due to calve this fall.



LAT 317/8

Consigned by: Lou-Al-Tuck Farms

Pair w/ Heifer Calf Reg. #20182095 DOB: 03/17/2018

GRANDVIEW 366T WENDT GERONIMO 3983
BRIGGS 003/99

LAT 212/6

Reg. #20164860

LAT 611/12 LAT PAYCHECK 526/5
MISS M 957

LF CHUCKIE BOY X2 SHAKER'S SIERRA 10/4
LF HOLLY BERRY 97

BRIGGS 707/14

Reg. #20145187

CHEEKS 197/3 POLLED TOP CAT 650
YELLOW PINES FARM 197

Weights		EPDs								
BW	YW	BW	WW	YW	Milk	TM	HCW	MARB	REA	SC
		1.2	9	7	5	11	-5	-0.07	0.01	0.30

Balanced Index: 60% | Cow/Calf Index: 45% | Terminal Index: 75%

LAT 317/8 has a big square hip and is full of femineity from Wendt Geronimo 3983 and Shakers Sierra 10/4. She carries the genetics and phenotype for today's cattle industry. She sells with her heifer calf born 12/1/23 r# 20234918 sired by LAT 212/6 who carries some of the top polled genetics, Briggs 023/91 and Payday 0049 and the CVF 239 female who was a tremendous producer of polled cattle. Breeding info available sale day.



LAT 03-09-23

Consigned by: Lou-Al-Tuck Farms

Open Heifer Reg. #20234919 DOB: 03/09/2023

Red Doc 8034 RED DOC 3150
RED DOC MULTIPLE DAM MD

BRIGGS 522H2

Reg. #20203558

BRIGGS644/13 BRIGGS 557/8
BRIGGS 522/5

BRIGGS 004/14 BRIGGS 070/9
BRIGGS 069/10

BRIGGS 613E2

Reg. #20176167

Briggs 758/14 BRIGGS 024/8
BRIGGS 545/11

Weights		EPDs								
BW	YW	BW	WW	YW	Milk	TM	HCW	MARB	REA	SC
		-0.2	5	10	0	7	0	-0.14	0.05	0.42

Balanced Index: 55% | Cow/Calf Index: 25% | Terminal Index: 80%

This open heifers dam Briggs 613E2 is one of our best cows! She is sired by Briggs 522H who ranks in the top 40% in 7 EPD traits. If your looking for a show prospect, here is a polled gentle heifer that's ready for a halter!



O'BRYANTS BEEB

Consigned by: K & C Farm

Open Heifer Reg. #20230500 DOB: 02/06/2023

INGOLD'S SENATOR 69/2 CHER. LITTLE GOVERNOR 8G25
BUNNY 19/8

OBRYANTS STEVIE

Reg. #20190965

MULTIPLE DAM MULTIPLE SIRE
MULTIPLE DAM

CREECH 113-5 GUNNIE 803
HARDING 162/7

FLATWILLOW 343

Reg. #20174253

FLATWILLOW 301 CIRCLE A ROWDY 50
FLATWILLOW GYPSY 206

Weights		EPDs								
BW	YW	BW	WW	YW	Milk	TM	HCW	MARB	REA	SC
		1.9	2	4	-2	3	-9	-0.09	-0.06	0.42

Balanced Index: >95% | Cow/Calf Index: 95% | Terminal Index: >95%

This young Polled open heifer goes back to Old School genetics Cherokee Lil Governor and on her dams side she combines Creech Farms and Flatwillow Farms genetics.



RW 12/23

Consigned by: RW Farm

Open Heifer Reg. #20234922 DOB: 09/25/2023

RDF SANCHO'S NEVER BEFORE 1136 RDF SANCHO 7-216
CA3194

RW NEBO 8/17

Reg. #20173801

4/15 REBECCA CREECH 904
9/7 PEARL

MC GRAND CHEROKEE MC OUTLAW 204
MC DARLA 368/1

RW HANNAH 7/18

Reg. #20181265

HISS 519/3 MC INDY 423/0
HISS 413/2

Weights		EPDs								
BW	YW	BW	WW	YW	Milk	TM	HCW	MARB	REA	SC
65		1.6	16	17	-4	7	-1	-0.03	0.02	0.38

Balanced Index: 75% | Cow/Calf Index: 90% | Terminal Index: 60%

Take a look at this young Show prospect, she goes back to Never Before 1136 on her sires side and MC Grand Cherokee on her dams side . Check out her solid EPD profile with 6 traits in the breeds top 50%. Sells Open.



RW 16/23

Consigned by: RW Farm

Open Heifer Reg. #20234924 DOB: 05/12/2023

RDF SANCHO'S NEVER BEFORE 1136 RDF SANCHO 7-216
CA3194

RW NEBO 8/17

Reg. #20173801

4/15 REBECCA CREECH 904
9/7 PEARL

8/13 WOOD CREECH 904
CREECH 107

RW SUNSHINE

Reg. #20182377

CINDY [2/16] CREECH 904
4/8 R W FARM

Weights		EPDs								
BW	YW	BW	WW	YW	Milk	TM	HCW	MARB	REA	SC
66		1.2	13	13	-3	7	-2	-0.08	0.01	0.35

Balanced Index: 80% | Cow/Calf Index: 90% | Terminal Index: 70%

Take a look at this young Show prospect, she goes back to Never Before 1136 on her sires side and Creech Farms genetics her dams side. Check out her solid EPD profile with WW and YW in the top 45%. Sells Open.



PERRY FARMS 017

Consigned by: Stephen Perry

Pair w/ Heifer Calf Reg. #20220460 DOB: 04/05/2022

RED DOC ROUGHNECK 6224 KR 1130/13
RED DOC 2119

CREECH 299-9

Reg. #20193270

HARDING 387/1 CSC FRED 8-5
HARDING 78/8

HARRIS 066C4 HARCO T958 (ET)
HARRIS FARMS T011/8 (ET)

WR 261

Reg. #20192275

DSR 1202 TOP GUNS NEW MAN 9T49
SILER 139/0

Weights		EPDs								
BW	YW	BW	WW	YW	Milk	TM	HCW	MARB	REA	SC
		0.9	8	9	1	9	-4	0.01	0.05	0.33

Balanced Index: 65% | Cow/Calf Index: 55% | Terminal Index: 70%

Nice first calf heifer, she is sired by a Red Doc Roughneck son and her dam is from Wiley Ranch and Harris Farms genetics. She sells with heifer calf born 4/10/24, sired by Perry 009 r# 20213485 that goes back to Donor Cow Red Doc 5369 and SR Genesis.



PERRY FARMS 019

Consigned by: *Stephan Perry*

Pair Reg. #20220462 DOB: 04/07/2022

RED DOC ROUGHNECK 6224 KR 1130/13
ED DOC 2119

HARDING 387/1 CSC FRED 8-5
HARDING 78/8

MC GRAND CHEROKEE MC OUTLAW 204
MC DARLA 368/1

HISS 1021/7 MC GRAND CHEROKEE
HISS 54/5

CREECH 299-9

Reg. #20193270

HISS 72/0

Reg. #20206266

Weights		EPDs									
BW	YW	BW	WW	YW	Milk	TM	HCW	MARB	REA	SC	
		0.9	5	4	-2	5	-7	0.00	-0.03	0.37	

Balanced Index: 85% | Cow/Calf Index: 90% | Terminal Index: 80%

Another Nice first calf heifer, she is sired by a Red Doc Roughneck son and her dam is from Creech Farms genetics. She sells heavy bred to Perry 009 r# 20213485 that goes back to Donor Cow Red Doc 5369 and SR Genesis.



WF93

Consigned by: *Ward Farm*

Open Heifer Reg. #20234817 DOB: 04/11/2023

TONY 108 ZEB 802
DB 18/2

GRAY OAKS 403

Reg. #20140420

GRAY OAKS 827

POLLED RINGER

W H CREEL 344
W H CREEL 631

SHAKER'S SIERRA 10/4
INDIAN PRINCESS 756

GRAY OAKS 353

Reg. #20120215

GRAY OAKS 026

W H CREEL 344
GRAY OAKS 214

Weights		EPDs									
BW	YW	BW	WW	YW	Milk	TM	HCW	MARB	REA	SC	
62		0.3	5	1	-2	4	-7	0.02	-0.03	0.24	

Balanced Index: 80% | Cow/Calf Index: 85% | Terminal Index: 70%

Stout open heifer she is sired by our Gray Oaks Farm polled bull and her dam goes back to Shaker Hill Sierra genetics. Take this heifer home and bred her to the bull of your choice.



WF95

Consigned by: *Ward Farm*

Open Heifer Reg. #20234821 DOB: 02/20/2023

TONY 108 ZEB 802
DB 18/2

GRAY OAKS 403

Reg. #20140420

GRAY OAKS 827

RED DOC SANCHO ET 3318

W H CREEL 344
W H CREEL 631

RDF SANCHO 7-216
OLIVAREZ RANCHES 1/921

GRAY OAKS 760

Reg. #20170477

GRANDVIEW MANDY 726

MR RED W101
MISS GRANDVIEW 0120

Weights		EPDs									
BW	YW	BW	WW	YW	Milk	TM	HCW	MARB	REA	SC	
64		0.5	16	14	2	14	-1	-0.02	-0.01	0.29	

Balanced Index: 40% | Cow/Calf Index: 35% | Terminal Index: 45%

Stout Big level hipped open heifer she is sired by our Gray Oaks Farm polled bull and her dam goes back to Red Doc Sancho 3318. Check out her EPD profile with Top 15% TM and Top 25% for WW. Take this heifer home and bred her to the bull of your choice.



WF97

Consigned by: Ward Farm

Open Heifer Reg. #20234819 DOB: 04/17/2023

PISTOLERO FC PISTOL 28/0
HARCO 1247

QVF PISTOLERO 5369H19

Reg. #20200364

Red Doc 5369 36/3
RDF 0035

R S HAMILTON TF 110 RED SOLO CUP
GRANDVIEW DAKOTA

WRF HEIDI

Reg. #20180185

KR60/16 H&B HEF-A-NIZER 86/9
KR 1057/13

Weights		EPDs									
BW	YW	BW	WW	YW	Milk	TM	HCW	MARB	REA	SC	
60		-0.5	11	20	-2	7	7	0.11	0.17	0.21	

Balanced Index: 45% | Cow/Calf Index: 85% | Terminal Index: 20%
Don't miss this QVF Pistolero bred open heifer, that goes back to TF Red Solo Cup on her dams side. Check out her Carcass EPD's all in te breeds top 25%. Take this heifer home and bred her to the bull of your choice.



W101

Consigned by: Ward Farm

Open Heifer Reg. #20234825 DOB: 04/30/2023

TONY 108 ZEB 802
DB 18/2

GRAY OAKS 403

Reg. #20140420

GRAY OAKS 827 W H CREEL 344
W H CREEL 631

POLLED RINGER SHAKER'S SIERRA 10/4
INDIAN PRINCESS 756

GRAY OAKS 357

Reg. #20130642

GRAY OAKS 036 W H CREEL 344
GRAY OAKS 912

Weights		EPDs									
BW	YW	BW	WW	YW	Milk	TM	HCW	MARB	REA	SC	
65		0.5	2	0	-1	4	-7	0.01	-0.03	0.25	

Balanced Index: 85% | Cow/Calf Index: 90% | Terminal Index: 80%
Another Stout open heifer she is sired by our Gray Oaks Farm polled bull and her dam goes back to Shaker Hill Sierra genetics. Take this heifer home and bred her to the bull of your choice.



G70 Sire of Lots 41 & 42



4 EMBRYOS PER LOT

Consigned by: 5J's Cattle Co.

KR 191/13

KR 97/10
KR 517/04 1A

HEFTE RANCH G70

Reg. #20191558

HEFTE RANCH D122

ROSE HILL SAM HOUSTON 831
MUSCLES W53

RED DOC NEVER SANK 5012

RDF SANCHO'S NEVER BEFORE 1136
RED DOC 3001

HEFTE RANCH F18

HEFTE RANCH D138ET

RPV 7/0 RPV7/0
BRIGGS 039/5

Weights		EPDs									
BW	YW	BW	WW	YW	Milk	TM	HCW	MARB	REA	SC	
67		0.7	14	17	-5	6	1	0.15	0.05	0.45	

Balanced Index: 35% | Cow/Calf Index: 55% | Terminal Index: 25%
We are offering a 4 embryo lot from the Mating of Hefte Ranch G70 Final Draft X Hefte Ranch F18 (RDF Never Sank daughter) High Bid x 4.



RED DOC FUEGO 1032

Consigned by: Fuego LLC

10 Straws of Semen Reg. #20210059 DOB: 01/24/2021

RED DOC TRUMP 5127 RED DOC 3150
RED DOC SABLE 3195

RED DOC TRUMP'S ACQUITTAL 8511

Reg. #20188214

RED DOC ET 6012 KR 189/11
RDF BONITA 8017

CA SPARTAN 16/194 RDF 0371
FOUR J 11/325

CHR 8-6

Reg. #20187781

FOUR J 15/301 CB BEAR 30/2
HARRIS FARMS 65/2

Weights		EPDs									
BW	YW	BW	WW	YW	Milk	TM	HCW	MARB	REA	SC	
60	1116	-2.4	27	16	-1	17	9	0.57	0.258	0.31	

Balanced Index: 3% | Cow/Calf Index: 20% | Terminal Index: 1%
Fuego is one of the most modern built bulls in the Santa Gertrudis breed today. He was selected at the 2022 Red Hot Bull Sale for a record breaking \$160,000. He possesses carcass, growth, marbling, feed efficiency and calving ease traits. His moderate frame, clean underline and exceptional thickness make him an excellent choice for both purebred and commercial producers. He has a Balanced Index of 2, supported by a 20 Cow-Calf Index and Terminal Index score of 1. And his actual birthweight was 60 lbs! Fuego 1032's semen is cleared for domestic and international sales. Semen Shipping is at buyers expense from Hoffman Breeders Logan, UT.



43-45

Star 5 Females



5J's Cattle Co. Star 5 Open Heifer Groups

What a group of 31 Star 5 registered Red Mott open heifers. We have taken the best in Santa Gertrudis genetics and crossed with our Hereford Cow herd. This calf crop of heifers has produced Star 5 Sale toppers at the recent Banners & Buckles Sale in Jackson, MS and a group at the Purple Reign Sale in Arkansas. On the show side we produced this years Reserve National Champion Star 5 female sired by RDF Never Sank daughter that topped the Banners & Buckles Sale at \$15,000. Whether you are looking for your next Star 5 show prospect or Commercial replacement females, these Red Mott females will make it happen!



2023 Reserve National Champion Star 5



RDF Never Sank

46-49 5J's Cattle Co. Pen of 4 Star 5 Open Heifers

Pen of 4 Star 5 Open Heifers all Sired By Never Sank 5012.

- Lot 46 ID 2086 R# 20235207 DOB 1/9/23
- Lot 47 ID 2087 R# 20235206 DOB 1/7/23
- Lot 48 ID 3005 R# 20235205 DOB 1/1/23
- Lot 49 ID 3030 R# 20235208 DOB 2/10/23

50-53 5J's Cattle Co. Pen of 4 Star 5 Open Heifers

Pen of 4 Star 5 Open Heifers all Sired By Never Sank 5012.

- Lot 50 ID 2506 R# 20235211 DOB 3/2/23
- Lot 51 ID 2507 R# 20235210 DOB 2/21/23
- Lot 52 ID 2508 R# 20235213 DOB 3/31/23
- Lot 53 ID 2509 R# 20235209 DOB 3/21/23



46-49

54-57 5J's Cattle Co. Pen of 4 Star 5 Open Heifers

Pen of 4 Star 5 Open Heifers all Sired By Hefte Ranch H79.

Lot 54 ID 3031 R# 20235223 DOB 2/6/23
Lot 55 ID 3039 R# 20235225 DOB 2/12/23
Lot 56 ID 3164 R# 20235228 DOB 6/1/23
Lot 57 ID JP 04 R# 20235230 DOB 2/20/23



58-61 5J's Cattle Co. Pen of 4 Star 5 Open Heifers

Pen of 4 Star 5 Open Heifers all Sired By Hefte Ranch G70.

Lot 58 ID 3071 R# 20235219 DOB 3/10/23
Lot 59 ID 3074 R# 20235220 DOB 3/10/23
Lot 60 ID 3078 R# 20235221 DOB 3/14/23
Lot 61 ID L00 R# 20235215 DOB 4/6/23



62-65 5J's Cattle Co. Pen of 4 Star 5 Open Heifers

Pen of 4 Star 5 Open Heifers Sired Hefte Ranch G70 & Creech 313-0.

Lot 62 ID 308 R# 20235216 DOB 4/14/23
Lot 63 ID 309 R# 20235217 DOB 4/23/23
Lot 64 ID 3047 R# 20235218 DOB 3/10/23
Lot 65 ID 3161 R# 20235212 DOB 6/10/23

66-69 5J's Cattle Co. Pen of 4 Star 5 Open Heifers

Pen of 4 Star 5 Open Heifers all Sired Hefte Ranch H79.

Lot 66 ID CP 10 R# 20235224 DOB 6/15/23
Lot 67 ID CP 13 R# 20235229 DOB 6/13/23
Lot 68 ID CP 15 R# 20235226 DOB 6/3/23
Lot 69 ID CP 16 R# 20235227 DOB 6/12/23

70-73 5J's Cattle Co. Pen of 4 Star 5 Open Heifers

Pen of 4 Star 5 Open Heifers all Sired Hefte Ranch H83.

- Lot 70 ID 33 R# 20235235 DOB 6/12/23
- Lot 71 ID 35 R# 20235231 DOB 6/1/23
- Lot 72 ID 42 R# 20235232 DOB 6/29/23
- Lot 73 ID 44 R# 20235233 DOB 6/7/23



74-76 5J's Cattle Co. Pen of 3 Star 5 Open Heifers

Pen of 3 Star 5 Open Heifers all Sired Hefte Ranch H83.

- Lot 74 ID 32 R# 20235234 DOB 6/22/23
- Lot 75 ID 34 R# 20235236 DOB 6/22/23
- Lot 76 ID 41 R# 20235237 DOB 6/19/23

77-79 5J's Cattle Co. Pen of 3 Star 5 Bred Heifers

Star 5 Bred Heifers, all sell bred to Hefte Ranch J125 JETSTREAM.

- Lot 77 ID 2088 R# 20227952 DOB 10/7/22
Sire: Never Sank 5012
- Lot 78 ID 2601 R# 20227954 DOB 7/29/22
Sire: Old Iron Chester
- Lot 79 ID 2602 R# 20227953 DOB 8/22/22
Sire: Old Iron Chester

82 Black Tip Cattle Co Star 5 Bred Heifers

BTC 331 Star 5 Bred Heifer R#20230395 DOB 1/21/23

This American Red 3/4 bred heifer is out of a Chosen One son out of Silva 915. She sells bred to RDF Incinerator r# 20210008 a low birth weight bull.

83 Black Tip Cattle Co Star 5 Bred Heifers

BTC 332 Star 5 Bred Heifer R# 20230396 DOB 1/21/23

This American Red 3/4 bred heifer is out of a Chosen One son out of Silva 915. She sells bred to RDF Incinerator r# 20210008 a low birth weight bull.



Star 5 Females



Rocking L Farm Star 5 Open Heifer

ID 0823 r# 20230376 DOB 4/27/23

Rocking L Ebony is an open Star 5 heifer sired by SG Bull Shampain 89 and her dam is an proven producing Angus Cow. Sells Open



Triple C Cattle Co Star 5 Pair w/ Bull Calf

ID 2/21 r# 20227934 DOB 2/22/22

Star 5 female sired by RW 9/20 that goes back to Never Before 1136 out of a Red Angus cow. She sells with her bull calf born 3/30/24 sired by RW 9/20.



Triple C Cattle Co Star 5 Bred Heifer

ID 21/22 r#20227955 DOB 5/15/22

21/22 is a bred Star 5 Santa Gertrudis x Brangus cross heifer. She sells bred to Santa Gertrudis bull RW 9/20. This is an opportunity to put Red Doc genetics in your herd.



Triple C Cattle Co Star 5 Pair Open Heifer

ID 8/23 r# 20235166 DOB 9/1/23

8/23 is a polled 3/4 Star 5 polled baby doll with Red Doc genetics. She has depth of rib and length along with capacity. She will make a great momma, Don't miss this fancy baby doll open heifer.





Windy Hill Farms, LLC



In Vitro Fertilization (IVF) Embryo Services;

Ramseur, NC

POWERED BY  Vytelle®



Offering Vytelle's proprietary IVF technology to the Mid-Atlantic region to enable faster genetic gains in customers' herds

2023 IVF Event Dates

- 4/12
- 5/17
- 6/14
- 9/13
- 10/11
- 11/8

**4763 Rainbow Trail
Ramseur, NC 27316**

**Will Moss
(336) 460-7451**

**windyhillfarmsllc@gmail.com
windyhillfarmsllc.com**



Introducing Rockin B Farm Newest Herd Sires!

**LOOKING FOR A BRIGHT FUTURE
BY ADDING THESE NEW GENETICS TO OUR HERD**



777 Beez

**2022 National Champion
Best of Polled Bull.**

*He combines the genetics of
Never Before 1136 and SJ High Roller.
#20196143*

Rockin 3T's Syrus 7J

*Sired by SGBI Sire of the Year
Rockin 3T Syrus.
#20217482*



Rockin B Farm

Mickey & Josh Bowman
Staley, N.C.
(336) 669-5771 • (336) 215-4774
Herd No. 13517

YOUR CARCASS, CUT YOUR WAY!

BEEF • PORK • LAMB • GOAT



SLAUGHTER FACILITY

9683 Kerrs Chapel Road
Gibsonville, NC

PROCESSING FACILITY

403 NC Hxy 49 S
Asheboro, NC



USDA SLAUGHTER PROCESS

We are a processor offering slaughter and processing service only. We DO NOT buy or sell any meat products.

www.PiedmontCustomMeats.com

(336) 628-4949



Lou Al Tuck Farm

SANTA GERTRUDIS CATTLE

Great Falls, SC



AL JACKSON

803-374-2678

Cattle For Sale at all Times

Sale Terms & Conditions

Except for those stated in the below terms and conditions, there are no warranties, either expressed or implied, as to the merchantability or fitness for a particular purpose with respect to the cattle being sold at this auction.

TERMS: Terms of sale are cash or check payable at sale location.

DISPUTES: Each animal will be sold to the highest bidder. In case of disputes, bidding will be reopened between the parties involved.

HERD HEALTH: Each animal must have an individual health certificate indicating a clean test for Brucellosis (Bangs) and Tuberculosis (TB) within 30 days of the sale. Cattle from certified and accredited herds do not require tests, but an interstate certification of veterinary inspection (ICVI) is still required.

PURCHASER'S RISK: Each animal becomes the risk of the purchaser as soon as sold. Animals will be cared for at the purchaser's risk for a reasonable length of time.

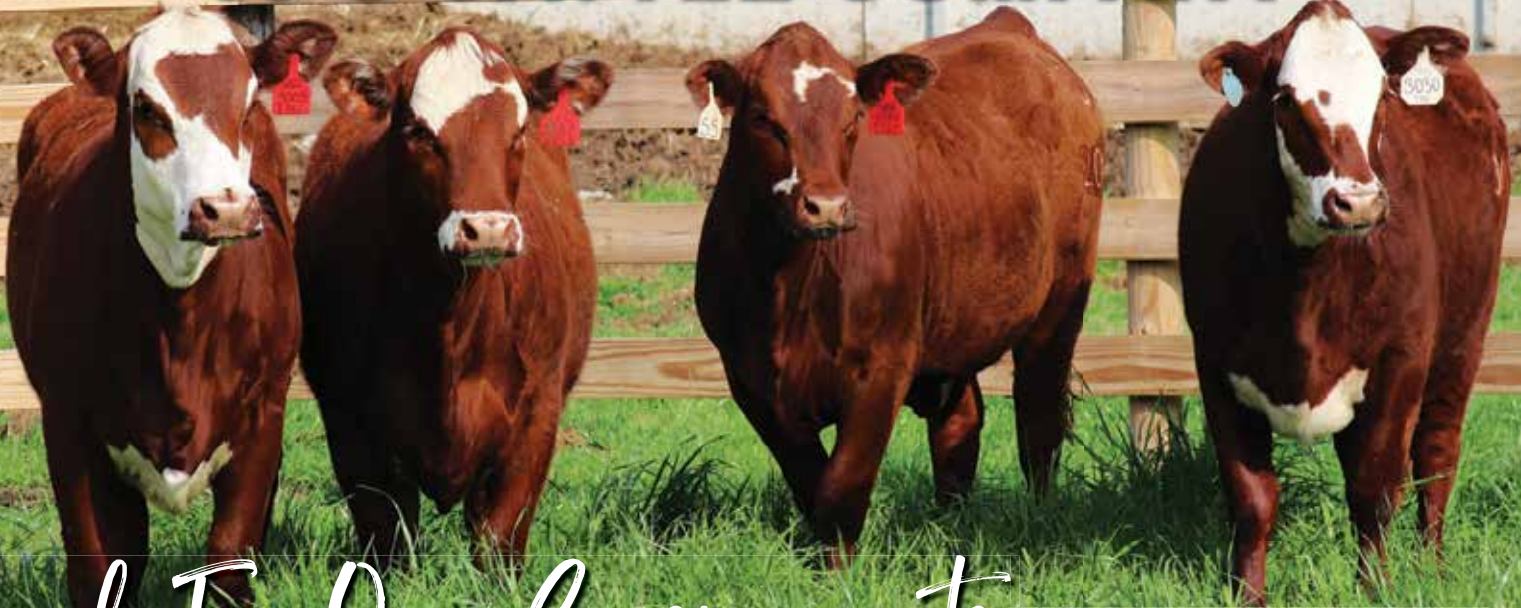
ANNOUNCEMENTS: Announcements from the auction block will take precedence over the printed matter in this catalog. Buyers are therefore cautioned to pay attention to any such announcements.

BREEDERS GUARANTEE: Cows represented as being pregnancy tested "safe in calf" have been examined and declared safe by a licensed veterinarian and will be accompanied by a veterinarian's certificate to this effect. They are considered breeders without further guarantee. Cows with calves at side shall be considered breeders also without further guarantee. Cows and heifers represented as "bred" are not guaranteed safe in calf, but they and open heifers selling as individual lots are guaranteed breeders. No guarantee shall apply to suckling calves. No guarantee is given that a pregnant female will deliver live calves or that she will carry calves full term. The seller is not responsible for damages caused by foreign bodies after the animal has been sold and for sickness not apparent at sale time. Bulls sell with satisfactory semen test within 30 days of sale.

ACCIDENTS: Although every precaution will be taken to protect the safety and comfort of buyers, neither the Sales Management, Auctioneer nor seller assumes any responsibility in this manner and denies any liability, legal or otherwise, in the event of accident or loss of property.

LIABILITY: The Sales Management and/or Auctioneer has been employed by the consignor(s) of the animals being sold solely for the purpose of advertising and conducting the subject sale. All information regarding the subject animals as published in the sale brochure and as announced at the sale is based on the representation made to the Sales Management and/or Auctioneer by the consignor(s). The Sales Management and/or Auctioneer has not made any independent investigation to verify title, health, registration and lien status of the subject animals. The Sales Management and/or Auctioneer make no representations, either expressed or implied, as to whether or not the subject animals are security under any lien, legal or equitable.

5J'S CATTLE COMPANY



Look For Our Consignments

**SELLING 30 STAR 5 RED MOTT
OPEN HEIFERS**



Plus

**A SELECT GROUP OF OPEN AND
BRED REGISTERED FEMALES.**

Thank You!

Purple Reign Sale Buyers

Clayden Tyson, Miss. • High Country Farms, Ark.



FIVE J'S CATTLE COMPANY

Jody Standley, Owner

Clayton, NC • (919) 291-4212

Jack and Sam Standley, Farm Managers
(919) 602-8640 (Jack) • (919) 737-4994 (Sam)

www.FiveJsFarm.com

BREEDERS **51st
Annual**
OF THE CAROLINAS SALE

May 11, 2024

NEW LOCATION: Monroe, N.C.





Richmond Marketing Service
78 Creek Ct.
Ringgold, Ga. 30736

51st Annual **BREEDERS**
OF THE CAROLINAS SALE
Saturday, May 11, 2024 | 11 am

Union County Agri Center
Monroe, N.C.

