



SANTA GERTRUDIS

**BREEDERS
OF THE CAROLINAS**



*** 50th ***
Anniversary

BREEDERS OF THE CAROLINAS SALE

May 13, 2023 • 11 a.m. EST

Union County Agri Center, Monroe, N.C. *(new location!)*

**REGISTERED & SANTA GERTRUDIS-
INFLUENCED LOTS**

**OVER
100**

**Pairs, Bred & Open Heifers and
a Select Group of Bulls**

SALE MANAGER

Darren Richmond (423) 364-9281

djrichmd@gmail.com

SALE COMMITTEE

Tony Creech (919) 427-4679

Josh Bowman (336) 215-4774

Dennis Lee (336) 202-4138

Jody Standley (919) 291-4212

**TO CONSIGN &
CATALOG REQUESTS**

Darren Richmond (423) 364-9281

djrichmd@gmail.com

This sale will be broadcast live on the internet.
DVAuction
Broadcasting Real-Time Auctions
Real time bidding & proxy bidding available.

**NEW
LOCATION!**

Union County Agri Center
Monroe, N.C.

LOCAL HOTELS

QUALITY INN

Monroe, N.C. • (704) 283-9600

COMFORT INN

Matthews, N.C. • (704) 845-5911

SLEEP INN

Matthews, N.C. (704) 841-1660



For more information, please visit our website

www.sgbreedersofthecarolinas.com

Creech Farms

Santa Gertrudis Cattle with built in Performance & Phenotype



Herd Sire SR 634F1



Performance Tested Bulls For Sale

Creech Farms

12483 NC 39 Zebulon, NC

Tony | 919.427.4679

Brandon | 919.761.3894

CF

Cattle for Sale at all times.



**Thank you to our
Purple Reign Sale Buyers!**
Red Dawn Farm & Doris Ranch

50th Annual **BREEDERS** **OF THE CAROLINAS SALE**

Saturday, May 13, 2023 | 11 am

Union County Agri Center | 307 Cultivation Circle Monroe, NC

President

Josh Bowman
336-215-4774

Sale Manager

Darren Richmond
423-364-9281
djrighmd@gmail.com

Ring Men

Will Thompson
704-616-8553

Brent Shaw
205-412-5761

Auctioneer

E. B. Harris
252-430-9595

Sale Committee Members

Tony Creech
Josh Bowman
Dennis Lee
Jody Standley

Sale Facility Address

Union County Agri Center
307 Cultivation Circle
Monroe, NC

Accommodations

Quality Inn 704-283-9600
Comfort Inn 704-845-5911
Sleep Inn 704-841-1660

Checkout videos at DVAuction.com

SCHEDULE OF EVENTS

Friday, May 12, 2023

12:00 pm - Cattle Arrive

6:00 pm - Annual Dinner &
Membership Meeting
(Sale Facility)

Guest Speakers

HC Neel
SGBI Executive Director

Bryan Blinson
North Carolina Cattlemen's Assn.
Executive Director

Look forward to the
**Breeders of the Carolinas
Silent Auction**

Saturday, May 13, 2023

8 am - Cattle Viewing
11 am - Sale



Facebook/Darren Richmond
Look for Sale Updates and Videos

Visit Santa Gertrud's Breeders of the
Carolinas website and make sure to like
us on Facebook!

www.sgbreedersofthecarolinas.com

Catalog layout by Warehouse Creative: **W | H**

CONSIGNORS

Creech Farm
Zebulon, NC 919
919-427-4679

Bar M Farm
Lenior, NC
828-493-2266

Five J Cattle Beef
Clayton, NC
919-291-4212

Rockin B Farm
Staley, NC
336-215-4774

Grandview Farm
Hamilton, AL
205-412-5761

Flatwillow Farm
Statesville, NC
704-682-4496

Hefte Ranch
Hondo, TX
210-414-2493

Hiss Family Farm
Columbia City, IN
260-503-5310

Jernigan Ranch
Buena Vista, GA
229-649-9659

Old Iron Farm
Monroe, NC
704-220-8506

Kade Thigpen
Hondo, TX
830-426-1336

Scott Sherrill
Concord, NC
404-402-5601

**JC Sherrill Jr
Ranch**
Mt. Ulla, NC
404-402-5601

Rocking L Farm
Siler City, NC
336-202-4138

RW Farm
Benson, NC
919-902-1003

Twisted T Farm
Liberty, NC
336-235-9600

Windy Knob SG
Russia, OH
937-538-6182

Triple C Cattle Co
Ocean Isle, NC
910-269-7717

Tinney Farms
Hanceville, AL
256-507-3838

Stephan Perry Farm
Zebulon, NC
919-625-9652

Windcrest Farm
Leitchfield, KY
270-734-1670

Lou Al Tuck Farm
Great Falls, SC
803-374-2678

Look for Gladys and
Gert Gear to be at
this years sale!

DVAuction
Broadcasting Real-Time Auctions

www.dvauction.com

Watch & Bid Online* for FREE!

Can't make the sale?

Let DVAuction bring the sale to you!

Busy during the sale?

Let DVAuction represent your bid!

Visit www.dvauction.com and register!

It's as easy as 1, 2, 3...

1. Create an account at www.dvauction.com under the "create new account" tab.
2. Apply for bidding by clicking "apply for bidding" in the upper left corner of your screen at least 24 hours prior to the auction.
3. Tune into the sale and make your purchase!

For general questions, please contact the DVAuction office: (402) 316-5460 or email support@dvauction.com

**High speed internet access required*



WR 414H

Consigned by: Creech Farm

Pair w/ Heifer Calf Reg. #20205763 DOB: 05/09/2020

FC PISTOL 28/0

GUNSLINGER 13/5
HOLLY 20/3

CB WAR HAWK 4/5

Reg. #20150666

HF ROSE 115/8

HARCO T155/5 (ET)
HARRIS FARMS T124/4 (ET)

BRIGGS 605/8

BRIGGS 532/5
BRIGGS 128/3

CB 502

Reg. #20151587

BRIGGS 583/9

BRIGGS 570/3
BRIGGS 265/96

Weights		EPDs									
BW	YW	BW	WW	YW	Milk	TM	HCW	MARB	REA	SC	
77	529	0.0	13	18	5	15	4	0.01	0.14	0.55	

Balanced Index: 35% | Cow/Calf Index: 65% | Terminal Index: 20%

Big Stout Broody female sired by CB War Hawk, with Briggs Ranches genetics on her dams side. This female exhibits 8 EPD Traits in the breeds top 30%. She sells with her heifer calf CF 458-2 born 9/30/22 sired by SR 16/20. Cow sells Aled to Hefte G70 Final Draft on 11/30/22 and later exposed to SR 16/20 from 11/30/22 to 2/13/23 and Hefte G70 from 2/13/23 to sale date.



CREECH 458-2

Consigned by: Creech Farms

Open Heifer Reg. #20223069 DOB: 09/30/2022

SR GENESIS 75/3

LJV MASON 0/72
SR ARKOMA 30/0

SR 16/20

Reg. #20200227

SR 8/4

AL ZEUS 213
P H WELDER 7/342

CB WAR HAWK 4/5

FC PISTOL 28/0
HF ROSE 115/8

WR 414H

Reg. #0205763

CB 502

BRIGGS 605/8
BRIGGS 583/9

Weights		EPDs									
BW	YW	BW	WW	YW	Milk	TM	HCW	MARB	REA	SC	
		0.5	18	23	0	13	4	0.06	0.13	0.47	

Balanced Index: 35% | Cow/Calf Index: 60% | Terminal Index: 20%

September show prospect open Heifer pedigree includes Genesis, Mason, War Hawk and FC Pistol. Take a look!



GRAY OAKS 835

Consigned by: Creech Farms

Pair w/ BC Reg. #20182247 DOB: 03/23/2018

TF 909

COPPERHEAD 214
LIBERTY RANCH 53/110

Viper 400

Reg. #20140758

TF 708

KUBECKA 47
TF 486

HARRIS FARMS 3/4

ADIOS 99/126
FIVE OAKS 33/0

HARRIS FARMS 329

Reg. #1281958

1240

ANGUS MULTIPLE SIRE MS
MULTIPLE DAM HARRIS SG

Weights		EPDs									
BW	YW	BW	WW	YW	Milk	TM	HCW	MARB	REA	SC	
68	505	0.4	-4	-1	4	6	-5	-0.02	0.02	0.35	

Balanced Index: 90% | Cow/Calf Index: 90% | Terminal Index: 85%

Another Deep bodied Broody female, sired by Gray Oaks Viper 400 and her dam is from Harris Farms genetics. She sells with a big stout herd sire prospect bull calf CF 448-2 r# 20223059 born 9/11/22 sired by SR Marksman 33/19. Cow sells Aled to Hefte G70 Final Draft on 11/30/22 and later exposed to SR 16/20 from 11/30/22 to 2/13/23 and Hefte G70 from 2/13/23 to sale date.



QVF MS NEVER BETTER 119J

Consigned by: Creech Farms

Bred Heifer Reg. #20210309 DOB: 03/13/2021

RDF SANCHO'S NEVER BEFORE 1136 RDF SANCHO 7-216
CA3194

Red Doc Never Better ET 7457

Reg. #20174013

RDF BONITA 8017

SCC NEW VISION 4V42
RDF 6-316

LJV MASON 0/72

SR 710
LJV DOLLY 8/48

SR 119/5

Reg. #20157864

TG 004

YF SLOOPY 19 19/3
TIDWELL 254

Weights		EPDs									
BW	YW	BW	WW	YW	Milk	TM	HCW	MARB	REA	SC	
70	586	1.7	30	38	1	20	10	0.12	0.21	0.51	

Balanced Index: 15% | Cow/Calf Index: 35% | Terminal Index: 10%

Check out this RDF Never Better daughter that goes back to Mason on her dams side. Check out her Impressive EPD's 5 Traits in the breeds top 3% including WW, YW, TM, CW and REA. She sells AIed to CA/RDF Mateo 7238 on 11/30/22 and laer exposed to SR 16/20 from 11/30/22 to 2/13/23 and Hefte G70 from 2/13/23 to sale date.



QVF MS MARKSMAN 203J

Consigned by: Creech Farms

Bred Heifer Reg. #20216170 DOB: 10/20/2021

KR CATALYST 531/15

KR 225/10
KR 310/12 2YO

SR MARKSMAN 33/19

Reg. #20190165

RED DOC 6054

RED DOC SI SABLE 3106
RED DOC 4032

MR. DOUBLE TT 109 ERVIN 109/8

MR DOUBLE TT GUS 112
MISS DOUBLE TT 251

CIRCLE A CASHMERE

Reg. #20141434

TF 724

TF 219
TF 0146

Weights		EPDs									
BW	YW	BW	WW	YW	Milk	TM	HCW	MARB	REA	SC	
72		-0.1	18	18	-7	6	4	0.19	0.18	0.53	

Balanced Index: 10% | Cow/Calf Index: 10% | Terminal Index: 15%

SR Marksman daughter that goes back to SGBI Sire of the year Double TT Ervin on the dams side. She exhibits 6 EPD traits in the breeds top 25% , including a top 10% in Marbling. She sells exposed to SR 16/20 from 12/30/22 to 2/13/23 and Hefte G70 from 2/13/23 to sale date.



FIVE J'S 06/22

Consigned by: 5J's Cattle Co.

Open Heifer Reg. #20220385 DOB: 03/18/2022

HEFTE RANCH F14 TOMCAT

KR 921/15

HEFTE RANCH D140ET

HEFTE RANCH H79

Reg. #20201438

HEFTE RANCH F90

KR 921/15
HEFTE 704

RED DOC NEVER SANK 5012

RDF SANCHO'S NEVER BEFORE 1136
RED DOC 3001

HEFTE RANCH H42

Reg. #20201439

HEFTE RANCH F63

HEFTE RANCH D36
HEFTE RANCH C27

Weights		EPDs									
BW	YW	BW	WW	YW	Milk	TM	HCW	MARB	REA	SC	
78		-0.6	12	14	1	11	2	0.00	0.03	0.32	

Balanced Index: 45% | Cow/Calf Index: 30% | Terminal Index: 45%

This performance based open heifer combines Hefte Ranch H79 genetics with RDF Never Sank on her dams side. With 5 EPD Traits in the breeds top 25% including BW. Take her home and bred her to the bull of your choice and add performance to your herd.



D BAR Z K01

Consigned by: 5J's Cattle Co.

Open Heifer Reg. #20220389 DOB: 03/06/2022

KR 191/13

KR 97/10

KR 517/04 1A

HEFTE RANCH G70

Reg. #20191558

HEFTE RANCH D122

ROSE HILL SAM HOUSTON 831
MUSCLES W53

KR729/16

HEFTE RANCH G51

Reg. #20190730

HEFTE RANCH E106

KR 380/14
KR 113/13 YR

AJH 126/0

HEFTE RANCH 874

Weights		EPDs									
BW	YW	BW	WW	YW	Milk	TM	HCW	MARB	REA	SC	
78		-0.4	12	14	-1	9	3	0.10	0.10	0.54	

Balanced Index: 20% | Cow/Calf Index: 15% | Terminal Index: 25%

Here is your opportunity to purchase a Hefte G70 Final Draft daughter, she goes back to King Ranch genetics on her dams side. Check out her very balanced EPD profile with a Top 25% in Marbling. This phenotypically well balanced heifer sells open. This is Zack's first ever sale consignment.



FIVE J'S 07/22

Consigned by: 5J's Cattle Co.

Open Heifer Reg. #20220391 DOB: 04/11/2022

HEFTE RANCH F14 TOMCAT

KR 921/15

HEFTE RANCH D140ET

HEFTE EL PRIMERO H04

Reg. #20197596

HEFTE RANCH F124

AJH 126/0

HEFTE RANCH Z60

KR 191/13

KR 97/10

KR 517/04 1A

HEFTE RANCH G41

Reg. #201201002455

HEFTE RANCH D93

ROSE HILL SAM HOUSTON 831

MIRA X58

Weights		EPDs									
BW	YW	BW	WW	YW	Milk	TM	HCW	MARB	REA	SC	
76		-0.4	21	26	-3	12	7	0.17	0.15	0.28	

Balanced Index: 10% | Cow/Calf Index: 15% | Terminal Index: 10%

Its hard to part with this young female, one of the first El Primero daughters to sell! This is Jack's only consignment in this years sale. Her dam is a daughter of King Ranch 191/13. This open heifers EPD profile impressive with 5 traits in the top 5% including Marbling!



FIVE J'S 07/21

Consigned by: 5J's Cattle Co.

Bred Heifer Reg. #20216410 DOB: 12/03/2021

KR 191/13

KR 97/10

KR 517/04 1A

HEFTE RANCH G70

Reg. #20191558

HEFTE RANCH D122

ROSE HILL SAM HOUSTON 831
MUSCLES W53

RED DOC NEVER SANK 5012

RDF SANCHO'S NEVER BEFORE 1136
RED DOC 3001

HEFTE RANCH F18

HEFTE RANCH D138ET

RPV 7/0 RPV7/0
BRIGGS 039/5

Weights		EPDs									
BW	YW	BW	WW	YW	Milk	TM	HCW	MARB	REA	SC	
67		0.7	14	17	-5	6	1	0.15	0.05	0.45	

Balanced Index: 35% | Cow/Calf Index: 55% | Terminal Index: 25%

This Donor prospect combines some of our best genetics sired by Hefte Ranch G70 Final Draft and her dam is an own daughter of RDF Never Sank. With a balanced EPD profile including top 15% for marbling. She sells Aled to El Primero HO4 r# 20297596 on 2/16/23 with Heifer sexed semen. We are also offering two lots of 4 embryos each of this Final Draft x Never Sank combination!



G70 Sire of Lots 6, 8, 9 & 10



4 EMBRYOS PER LOT

Consigned by: 5J's Cattle Co.

KR 191/13

KR 97/10

KR 517/04 1A

HEFTE RANCH G70

Reg. #20191558

HEFTE RANCH D122

ROSE HILL SAM HOUSTON 831
MUSCLES W53

RED DOC NEVER SANK 5012

RDF SANCHO'S NEVER BEFORE 1136
RED DOC 3001

HEFTE RANCH F18

HEFTE RANCH D138ET

RPV 7/0 RPV7/0
BRIGGS 039/5

Weights		EPDs									
BW	YW	BW	WW	YW	Milk	TM	HCW	MARB	REA	SC	
67		0.7	14	17	-5	6	1	0.15	0.05	0.45	

Balanced Index: 35% | Cow/Calf Index: 55% | Terminal Index: 25%

We are offering a 4 embryos per lot from the Mating of Hefte Ranch G70 Final Draft X Hefte Ranch F18 (RDF Never Sank daughter) these will be full sibs to 07/21 Lot 8.



BM 190

Consigned by: Bar M Farm

Bred Heifer Reg. #20216434 DOB: 12/10/2021

FC PISTOL 28/0

UNSLINGER 13/5
HOLLY 20/3

QVF PISTOL 60G8

Reg. #20190553

SR 60/3

LJV MASON 0/72
SR 10.0 10/0

HARRIS FARMS 160/7

HARRIS FARMS 56/3
SR 302

DOUBLE C 10/43

Reg. #20106095

DOUBLE C FARMS 0524

FIVE OAKS 48/4
DOUBLE C FARMS 5/36

Weights		EPDs									
BW	YW	BW	WW	YW	Milk	TM	HCW	MARB	REA	SC	
68	614	1.8	25	32	-3	13	3	0.07	0.08	0.53	

Balanced Index: 25% | Cow/Calf Index: 35% | Terminal Index: 15%

Along with 178, this was a hard decision to make also. BM 190 is the epitome of what we strive to breed for here at Bar M. Sure footed, stout legged, and when you tie her length & depth of body with her natural fleshing ability all together it really makes this female top tier! 190 along with 178 is one that can fit in any operation phenotypically with a strong set of EPD's. These two need to be in the donor pen somewhere! 190 has been pasture exposed to Hefte Ranch Jet Stream J125 1-15-23 until Sale Date. Bar M Farms retains one flush at our expense and buyers convenience.



BM 178

Consigned by: Bar M Farm

Bred Heifer Reg. #20216436 DOB: 10/05/2021

FC PISTOL 28/0

GUNSLINGER 13/5
HOLLY 20/3

QVF PISTOL 60G8

Reg. #20190553

SR 60/3

LJV MASON 0/72
SR 10.0 10/0

HARRIS FARMS 160/7

HARRIS FARMS 56/3
SR 302

DOUBLE C 16/145

Reg. #20165547

DOUBLE C 10/32

TF 2139
DOUBLE C FARMS 9458

Weights		EPDs									
BW	YW	BW	WW	YW	Milk	TM	HCW	MARB	REA	SC	
67	600	1.9	18	25	-2	11	1	0.08	0.09	0.53	

Balanced Index: 40% | Cow/Calf Index: 60% | Terminal Index: 30%

We had a hard time letting this one go, but we wanted to bring out best! Study this female from whichever angle you want to and it's hard to find a piece you don't like. BM 178 is in the top 30% for 10 of the 13 traits on the EPD profile! This is the type of female anyone can use to add Phenotype while still keeping the numbers at a high standard in the carcass world. Seeing this one go is hard, however we think she can hold her own in any operation. 178 has been pasture exposed to Hefte Ranch Jet Stream J125 1-15-23 until Sale Date. Bar M Farms retains one flush at our expense and buyers convenience.



ROCKIN B 1219

Consigned by: Rockin B Farm

Pair w/ BC Reg. #20197054 DOB: 11/01/2019

RDF SANCHO'S NEVER BEFORE 1136
RDF SANCHO 7-216
CA3194

RED DOC 6013

Reg. #20160089

RED DOC RUBY 4105

KR 101/11
RED DOC 2203

DOC HOLIDAY 216

GUNNIE 803
MISS MN 911/7

ROCKIN B 2216

Reg. #20166304

SANTA GERTRUDIS

SANTA GERTRUDIS
SANTA GERTRUDIS

Weights		EPDs									
BW	YW	BW	WW	YW	Milk	TM	HCW	MARB	REA	SC	
78	586	0.5	11	12	-1	8	-1	0.03	0.03	0.48	

Balanced Index: > 95% | Cow/Calf Index: 95% | Terminal Index: > 95%

Take a good look at the perfect udder on this young female. She comes to you with her herd sire prospect bull calf r# 20225703 born 12/29/23 sired by RDF RoughNeck 6224. Cow sells exposed back to RDF RoughNeck 2/6/23 to sale date.



ROCKIN B 1621

Consigned by: Rockin B Farm

Bred Heifer Reg. #20216743 DOB: 10/28/2021

KR CATALYST 531/15

KR 225/10

KR 310/12 2YO

SR SURGE 4/19

Reg. #20190137

SR ARKOMA 30/0

MR WINROCK N127
PERNER D 931

RED DOC 6013

RDF SANCHO'S NEVER BEFORE 1136
RED DOC RUBY 4105

ROCKIN B 1619

Reg. #20197057

SANTA GERTRUDIS

SANTA GERTRUDIS
SANTA GERTRUDIS

Weights		EPDs									
BW	YW	BW	WW	YW	Milk	TM	HCW	MARB	REA	SC	
78	518	-0.7	19	22	-7	7	6	0.09	0.11	0.59	

Balanced Index: 10% | Cow/Calf Index: 5% | Terminal Index: 15%

Halter broke polled SR Surge daughter, very clean and correct, she goes back to RDF Never Before and Donor cow Ruby on her dams side. Solid EPD's across the board. Sells AI'd to King Ranch Chosen One on 1/29/23. Pregnancy status announced at the sale.



14



ROCKING L AUDREY 0120

Consigned by: Rocking L Farm

Bred Cow Reg. #20207838 DOB: 10/13/2020

HARCO T958 (ET)

PCR AVALANCHE 95/5 (ET)
MISS WINROCK M253

JERNIGAN 707

Reg. #20170138

HARDING 435/2

HF FRED 303/9
HARDING 110/6

JERNIGAN 3/11

JERNIGAN SR 707
LOUGHRIDGE 801 801A

JERNIGAN 713

Reg. #20172746

JERNIGAN 7/15

RDF SANCHO'S NEVER BEFORE 1136
JERNIGAN SR 204

Weights		EPDs									
BW	YW	BW	WW	YW	Milk	TM	HCW	MARB	REA	SC	
105	550	3.0	17	26	3	16	2	0.10	0.09	0.36	

Balanced Index: 45% | Cow/Calf Index: 50% | Terminal Index: 40%

Audrey is a big framed, smooth polled heifer. Her bloodlines go back to RDF Sancho's Never Before 1136 on the bottom side and Harco T958ET on the top side. Audrey also carries impressive EPDs! She has 8 of the 12 breed EPDs above breed average. She has been fully GGP DNA tested and is currently safe in calf to Shampain 89 (R# 20201560) with a due date of April 2023.



15



ROCKING L MISS KITTIE 0222

Consigned by: Rocking L Farm

Open Heifer Reg. #20220139 DOB: 03/14/2022

FC PISTOL 28/0

GUNSLINGER 13/5
HOLLY 20/3

GUNSMOKE 253E

Reg. #20171702

HARCO 1247

HARCO T958 (ET)
HARCO T883 (ET)

GRANDVIEW JOHN 316

RED HOT 4010
HARCO T640 (ET)

MISS GRANDVIEW G058

Reg. #20195714

MISS GRANDVIEW 4123

GRANDVIEW 017
MISS GRANDVIEW 808T (ET)

Weights		EPDs									
BW	YW	BW	WW	YW	Milk	TM	HCW	MARB	REA	SC	
82	600	1.3	9	14	5	13	-1	-0.19	0.04	0.43	

Balanced Index: 75% | Cow/Calf Index: 60% | Terminal Index: 85%

Miss Kitty is a young dark red, smooth polled heifer with some impressive genetics! Her dam is a daughter to the well-known, Grandview John 316 bull, and her sire is Gunsmoke 253E. Miss Kitty is a deep bodied, very feminine heifer with very balanced EPDs. Miss Kitty sales fully GGP DNA tested and open, giving you the opportunity to take her home and breed her to the bull of your choosing. Sells Open.



16



ROCKING L REBA 0521

Consigned by: Rocking L Farm

Open Heifer Reg. #20215250 DOB: 12/02/2021

KR CATALYST 531/15

KR 225/10

KR 310/12 2YO

SR SURGE 4/19

Reg. #20190137

SR ARKOMA 30/0

MR WINROCK N127

PERNER D 931

RED DOC 6013

RDF SANCHE'S NEVER BEFORE 1136

RED DOC RUBY 4105

ROCKIN B 219

Reg. #20190861

SANTA GERTRUDIS

SANTA GERTRUDIS

SANTA GERTRUDIS

Weights		EPDs								
BW	YW	BW	WW	YW	Milk	TM	HCW	MARB	REA	SC
70	575	-1.8	10	8	-6	2	1	0.18	0.03	0.60

Balanced Index: 20% | Cow/Calf Index: 20% | Terminal Index: 20%

Reba is a full bodied and well-balanced heifer. She is a daughter of the infamous, SR Surge 4/19 bull and on her dam's side, she goes back to RDF Sancho's Never Before 1136. Reba sales fully GGP DNA tested and open. Take her home and breed this amazing young heifer to the bull of your choice! Sells Open.



FLATWILLOW 407

Consigned by: Flatwillow Farm

Pair w/ HC Reg. #20202907 DOB: 08/02/2020

CREECH 113-5

GUNNIE 803

HARDING 162/7

HEAVY METAL 342

Reg. #20171158

FLATWILLOW 290

CHARLIE BROWN 211

FLATWILLOW DAISY 216

FLATWILLOW MERLIN 150

PATRIOT 766/0

SEQUATCHIE VALLEY SA 10/0

FLATWILLOW 289

Reg. #20141245

DOUBLE C FARMS 4-146

WENDT 4443

DOUBLE C FARMS 6/47

Weights		EPDs								
BW	YW	BW	WW	YW	Milk	TM	HCW	MARB	REA	SC
64		0.3	2	1	-5	0	-7	-0.08	-0.03	0.34

Balanced Index: 95% | Cow/Calf Index: 90% | Terminal Index: 90%

407 is a deep, thick, polled and halter broke. She sells with her first calf a show prospect heifer calf born 2/5/23 sired by our Harris Double Wide son (Big Show 129-5 r# 20155824). It was hard to sell them, but we wanted to bring our Best to the 50th Anniversary Sale. Cow sells open ready to breed.



MISS GRANDVIEW J087

Consigned by: Grandview Farm

Bred Heifer Reg. #20216865 DOB: 11/25/2021

HARRIS FARMS 190E

KR 921/15

HARRIS FARMS 1524

QVF JACKPOT 5369G8

Reg. #20193317

RED DOC 5369

36/3

RDF 0035

SLEDGE 789

BRIGGS 567/5

WENDT 0/1

MISS GRANDVIEW S19

Reg. #20116086

MISS GRANDVIEW 203

GRANDE 5/2

MISS GRANDVIEW 554

Weights		EPDs								
BW	YW	BW	WW	YW	Milk	TM	HCW	MARB	REA	SC
67	590	-0.2	25	25	-5	11	4	0.26	0.08	0.22

Balanced Index: 10% | Cow/Calf Index: 20% | Terminal Index: 4%

Miss Grandview J087 is a stout Jackpot 5369G8 daughter out of a NC Sledge 789 daughter. J087 combines the substance of bone, length, and femininity with a strong genomic profile to fit any progressive program. She has the power to produce a herdsire. Sells AI bred 1-29-23 to Grandview Powerball H097 (reg 20207321). Breeding status available sale day. We're honored to be in and congratulate the Breeders of the Carolinas for their 50th sale! She is safe in calf, due to calve in November.





TF J090

Consigned by: Tinney Farms

Bred Heifer Reg. #20217410 DOB: 08/20/2021

5-E'S INTEGRITY 350

MAGNUM 357
BRIGGS 019/5

5-E RUSHMORE 141

Reg. #20166424

5-E TANYA 322

5-E'S 300 MAGNUM 300
MISS WINROCK R124

5-E'S SEVEN (ET) 7

COLT'S GLADIATOR 745/9
TISON FARMS 4/7

WOMAN HOLLERIN 4651

Reg. #20140391

SUZY Q 651

MOUNTAIN APACHE 46
ZESTA PRIDE 43

Weights		EPDs									
BW	YW	BW	WW	YW	Milk	TM	HCW	MARB	REA	SC	
	534	2.0	22	27	-6	8	-1	-0.11	-0.08	0.40	

Balanced Index: 40% | Cow/Calf Index: 35% | Terminal Index: 45%

Check out this Stout female sired 5 Bar E Rushmore going back to National Champions Integrity and Magnum. She sells exposed to Briggs 530J2 r# 20213664 a son of King Ranch 912/18 who has 6 EPD traits in the breeds top 10%, this mating should explode with performance!



5-E 61

Consigned by: Tinney Farms

Bred Heifer Reg. #20208513 DOB: 11/09/2020

KR 97/10

RDF 8052
KR N2/5 4A

TF 753

Reg. #20181333

TF 4139

TF 909
BHR KIRSTEN 647

SOMBREIRO 394

HATCHET 150
WENDT 6539

CIRCLE A LADY FAR 121

Reg. #1293063

FULLINGTON FAR 11/04

SHAKER'S PLAYBOY 720
CHERRY GROVE 6/1 6

Weights		EPDs									
BW	YW	BW	WW	YW	Milk	TM	HCW	MARB	REA	SC	
76	691	1.3	12	15	-7	3	-4	-0.02	0.03	0.38	

Balanced Index: 60% | Cow/Calf Index: 75% | Terminal Index: 50%

This young female is sired by Grandview 686 going back to Red Hot 4010 and her dam goes back to National Champions Integrity and Magnum. She sells exposed to 2017 National Champion Circle A Masterpiece.



HEFTE RANCH K27

Consigned by: Hefte Ranch

Bred Heifer Reg. #20217973 DOB: 11/24/2021

KR 191/13

KR 97/10
KR 517/04 1A

HEFTE RANCH G70

Reg. #20191558

HEFTE RANCH D122

ROSE HILL SAM HOUSTON 831
MUSCLES W53

HEFTE RANCH D65

AJH 126/0
HEFTE W24

HEFTE RANCH G13

Reg. #20187240

CA 12/8

WENDT **ALL STAR 5876** 5876
DOUBLE E FARMS 130

Weights		EPDs									
BW	YW	BW	WW	YW	Milk	TM	HCW	MARB	REA	SC	
482	0.2	14	14	14	-2	9	1	0.08	0.03	0.47	

Balanced Index: 30% | Cow/Calf Index: 20% | Terminal Index: 35%

This fancy, gentle, polled and dark red daughter of Hefte Ranch G70 Final Draft is hard to let go. She has solid EPDs and combines some of our favorite bloodlines going back to KR 191/13 and Hefte Ranch D65. She sells pasture exposed to Hefte Ranch G06(20187226) from 02/28 to 04/30/23.





HEFTE RANCH K30

Consigned by: Hefte Ranch

Bred Heifer Reg. #20217359 DOB: 12/21/2021

KR 191/13

KR 97/10

KR 517/04 1A

HEFTE RANCH G18

Reg. #20187243

HEFTE W24

PG 510-6

OLIVAREZ RANCHES 880

HEFTE RANCH D25

HARCO 1323

HEFTE RANCH A88

HEFTE RANCH F67

Reg. #20183786

HEFTE RANCH C136

LMR DANDY 024

HEFTE RANCH Z33

Weights		EPDs									
BW	YW	BW	WW	YW	Milk	TM	HCW	MARB	REA	SC	
	402	1.1	15	21	-2	9	3	-0.03	0.12	0.35	

Balanced Index: 30% | Cow/Calf Index: 20% | Terminal Index: 40%

This gentle, thick-made heifer is out of KR 191/13 son, Hefte Ranch G18 and a D25 daughter. Take a look at her top 10% HeiferPreg, top 20% Breedback EPDs, as well as her strong growth EPDs. K30 was AI'd with heifer-sexed Hefte H04 El Primero (#20197596) semen on 2/11/23 and PE to Hefte Ranch G06 (20187226) 02/28- 4/30.



KT 4/22

Consigned by: Kade Thigpen

Open Heifer Reg. #20225841 DOB: 04/20/2022

RDF SANCHO'S NEVER BEFORE 1136 RDF SANCHO 7-216
CA3194

RED DOC NEVER SANK 5012

Reg. #20153072

RED DOC 3001

O/X 752
RDF 6-169

HEFTE RANCH E18

RED DOC TOP SHELF 1342
HEFTE RANCH B18

CAMILLE'S DEER 22/9

Reg. #20193345

KT 14/6

HEFTE RANCH B06
KR 302/13 YR

Weights		EPDs									
BW	YW	BW	WW	YW	Milk	TM	HCW	MARB	REA	SC	
	490	-0.6	10	13	-1	7	3	-0.08	0.06	0.47	

Balanced Index: 60% | Cow/Calf Index: 80% | Terminal Index: 45%

A never sank daughter that is sure to make a well rounded cow. Complete phenotype, great genetics and gentle! I would envision this female working with just about any bull.



KT 5/22

Consigned by: Kade Thigpen

Star 5 Open Heifer Reg. #20225842 DOB: 05/22/2022

RDF SANCHO'S NEVER BEFORE 1136 RDF SANCHO 7-216
CA3194

RED DOC NEVER SANK 5012

Reg. #20153072

RED DOC 3001

O/X 752
RDF 6-169

PIE JUST RIGHT

PIE THE COWBOY KIND
RAISLAND LAKOTA

TOWNSEND 0520

Reg. #20201692

HARRIS 36/5

AJH 126/0
HARCO 1308

Weights		EPDs									
BW	YW	BW	WW	YW	Milk	TM	HCW	MARB	REA	SC	
	415	-1.0	7	9	-2	6	-3	-0.01	0.05	0.45	

Balanced Index: 65% | Cow/Calf Index: 90% | Terminal Index: 40%

This little never sank daughter is moderate and flashy! She sure catches your eye when you walk into the pen. She brings a unique pedigree combining Townsend, Red Doc, and red Angus genetics. Star 5 3/4 Open Heifer.



PERRY FARMS 018

Consigned by: Stephan Perry Farms

Open Heifer Reg. #20220461 DOB: 04/07/2022

RED DOC ROUGHNECK 6224

KR 1130/13

RED DOC 2119

CREECH 299-9

Reg. #20193270

HARDING 387/1

CSC FRED 8-5
HARDING 78/8

CP ROBERTO 295D1 (ET)

ROBERTO BRIGGS 072/13
MISS DOUBLE TT 295

WRF Millie 21 [LC 538]

Reg. #20190054

HF 6116/14

HF MAX 6105/10
TF 6116

Weights		EPDs									
BW	YW	BW	WW	YW	Milk	TM	HCW	MARB	REA	SC	
		0.0	4	0	-1	4	-8	-0.05	-0.07	0.37	

Balanced Index: 85% | Cow/Calf Index: 80% | Terminal Index: 85%

This open heifer is sired by a son of RDF RoughNeck and her dam sells today as Lot 28.



PERRY FARMS 014

Consigned by: Stephan Perry Farms

Open Heifer Reg. #20216484 DOB: 10/04/2021

KR CATALYST 531/15

KR 225/10

KR 310/12 2YO

SR 19/F1

Reg. #20180823

SR HOLLY T19 (ET)

RDF SANCHE'S NEVER BEFORE 1136
SR HOLLY 033

RED DOC ROUGHNECK 6224

KR 1130/13
RED DOC 2119

CREECH 279-9

Reg. #20193252

CREECH 907

GRAY OAKS 502 (ET)
DOUBLE C FARMS 6/15

Weights		EPDs									
BW	YW	BW	WW	YW	Milk	TM	HCW	MARB	REA	SC	
		0.8	4	3	-9	-3	-6	0.07	0.02	0.46	

Balanced Index: 60% | Cow/Calf Index: 45% | Terminal Index: 70%

This open heifers pedigree combines some strong genetics sired by SR 19F1 a Catalyst son and her dam is an daughter of RDF RoughNeck. Check out her EPD profile with top 30% for marbling and top 15% For BB.



WRF MILLIE 21

Consigned by: Stephan Perry Farms

Pair w/ BC Reg. #20190054 DOB: 02/22/2019

ROBERTO BRIGGS 072/13

BRIGGS 580/0

BRIGGS 092/10

CP ROBERTO 295D1 (ET)

Reg. #20161619

MISS DOUBLE TT 295

MR DOUBLE TT JOE 043/99
MISS DOUBLE TT 95

HF MAX 6105/10

HF BRAVO'S BULLET ET 197
TF 6105

HF 6116/14

Reg. #20144116

TF 6116

TF 321
CA 466

Weights		EPDs									
BW	YW	BW	WW	YW	Milk	TM	HCW	MARB	REA	SC	
62	542	-0.8	5	7	1	8	-3	-0.05	-0.06	0.33	

Balanced Index: 40% | Cow/Calf Index: 35% | Terminal Index: 40%

This proven female is an granddaughter of Roberto and goes back to Tinney Farms genetics on her dams side. She sells with her bull calf born 3/16/23 sired by CF 351.



DC 22

Consigned by: Colton Talbert

Bred Heifer Reg. #20215445 DOB: 07/02/2021

KR 189/11

KR 282/08

KR 363/5 5A

RED DOC RED WAGON 3264

Reg. #20131010

OLIVAREZ RANCHES 1-916

OLIVAREZ RANCHES 4/545
OLIVAREZ RANCH 2/407

MC 423

TOP GUN 244
ROCKY HAMMOCK 54/5

MC 503

Reg. #20158379

MC TINA 423

NG LEGEND 100
MC 423/9

Weights		EPDs									
BW	YW	BW	WW	YW	Milk	TM	HCW	MARB	REA	SC	
69	435	-0.9	-1	-4	-1	2	-4	0.00	0.07	0.34	

Balanced Index: 80% | Cow/Calf Index: 80% | Terminal Index: 75%

Solid Polled female sired by Mc Ranch herd sire RDF Red Wagon and her dam goes back to MC Earl. She sells bred to Five J's J13.



MISS GRANDVIEW J055

Consigned by: Old Iron Farm

Bred Heifer Reg. #20214548 DOB: 05/28/2021

FC PISTOL 28/0

GUNSLINGER 13/5

HOLLY 20/3

GRANDVIEW 253F1

Reg. #20182491

HARCO 1247

HARCO T958 (ET)
HARCO T883 (ET)

BRIGGS 030/5

PARTNER 5273
BRIGGS 016/00

037/14

Reg. #20143316

BRIGGS 004/8

CHAPS LONESTAR 107 107/2
MISS KATE 007

Weights		EPDs									
BW	YW	BW	WW	YW	Milk	TM	HCW	MARB	REA	SC	
70	460	0.9	13	20	5	16	2	-0.07	0.04	0.47	

Balanced Index: 45% | Cow/Calf Index: 45% | Terminal Index: 45%

Take a look at our Grandview Farms female sired by GV 253F1 an FC Pistol son and her dam goes back to Briggs Ranches Genetics. Her EPD profile exhibits 7 traits in the breeds top 30% including a Top 5% for Milk! Now heres the Big Bonus she sells Aled on 1/1/23 to JackPot r# 20193317 that's has produced some of the High Selling Open heifers at the 2022 Alabama Connection sale.





MC 609

Consigned by: Scott Sherrill

Pair w/ Bull Calf Reg. #20167416 DOB: 08/01/2016

WENDT 7407

SHERIFF 5577

WENDT 7401

MC OUTLAW 204

Reg. #1297855

CHEEKS 504/1

POLLED TOP CAT 650
CHEEK'S 5/0/4

MC 423

TOP GUN 244
ROCKY HAMMOCK 54/5

MC 17/9

Reg. #1279554

MC SCARLET'S BONNIE 517/5

DCR 604
SCARLET 24/9

Weights		EPDs									
BW	YW	BW	WW	YW	Milk	TM	HCW	MARB	REA	SC	
65	645	0.1	8	5	-1	6	-6	-0.03	-0.08	0.36	

Balanced Index: 45% | Cow/Calf Index: 50% | Terminal Index: 45%

MC 609 is a really nice polled cow with classic MC Ranch bloodlines, an own grand daughter of MC Scarlets Bravo and also going back to MC Earl 423 and Wendt 7407. She sells with her bull calf born 11/24/22 sired by JCS Tripp . 609's last calving interval was 347 days . Cows sells exposed back to JCS Tripp 93/7. We are retaining One IVF Flush at our expense and buyers convience guaranteeing 6 transferable embryos.



JCS57/2

Consigned by: JCS Ranch

Open Heifer Reg. #20222197 DOB: 04/26/2022

777/0 L-L TRIPP 777

POLLED MULE 1/2 1/8
L-L FARMS INC 613

KNG 927/3

HARCO T155/5 (ET)
SHERRILL'S SQUIRTLE 01/2

MR BULL 174/1

CLARENDON 344
CLARENDON 719

JCS KENNEDY

Reg. #20132807

SHERRILL'S SUNSHINE (ET) 39/5

TOP GUN 244
CASSIE CT5/0

Weights		EPDs									
BW	YW	BW	WW	YW	Milk	TM	HCW	MARB	REA	SC	
		1.6	13	16	2	12	-1	0.00	0.04	0.36	

Balanced Index: 55% | Cow/Calf Index: 50% | Terminal Index: 55%

JCS 57/2 sells as an open heifer . On the top side she's a Daughter of JCS Tripp 93/7 and goes back to L&L 777/0 and Harco T155/5. On the bottom side she goes back to Mr.Bull 174/1, Top Gun, Shakers Playboy, and Grandview Ciera 433. She has been started on halter.



HISS 918/2

Consigned by: Hiss Family Farm

Open Heifer Reg. #20225739 DOB: 09/18/2022

RED DOC RED WAGON 3264

KR 189/11
OLIVAREZ RANCHES 1-916

MC 609

MC OUTLAW 204
MC 17/9

TF 0101

KR 504
TF 3137

[529/9]

Reg. #20198215

HISS 99/2

Reg. #201201004545

OLIVIA 71/9

CIRCLE A SUNDANCE 52
DS RAQUEL 443

Weights		EPDs									
BW	YW	BW	WW	YW	Milk	TM	HCW	MARB	REA	SC	
50		0.3	2	1	-1	3	-5	-0.03	0.00	0.32	

Balanced Index: 90% | Cow/Calf Index: 90% | Terminal Index: 85%

This young polled heifer has a straight topline with feminine features. She is gentle with Potential to be a Big Baby. She goes back to Red doc Red Wagon on the top side and NuGen Legend 100 on the Dams side.



JCS Westover 46/1

Consigned by: Scott Sherrill

Bred Heifer Reg. #20210909 DOB: 06/01/2021

777/0 L-L TRIPP 777

POLLED MULE 1/2 1/8
L-L FARMS INC 613

KNG 927/3

HARCO T155/5 (ET)
SHERRILL'S SQUIRTLE 01/2

JCS OMAHA 68/5

JCS DEAN 91/9
TF 3136

JCS TRIPP

Reg. #20175123

JCS SHIRLEY 111/8

Reg. #20181378

JCS ANUBIS 87/9

SHERRILL'S ACE 38/5
JCS HATHOR 51/7

Weights		EPDs									
BW	YW	BW	WW	YW	Milk	TM	HCW	MARB	REA	SC	
70		0.5	8	7	4	12	-3	0.00	0.02	0.31	

Balanced Index: 60% | Cow/Calf Index: 50% | Terminal Index: 65%

JCS Westover represents 32 years of our breeding program . On the top side she is a daughter of JCS Tripp 93/7 and on the bottom side she goes back to JCS Dean 91/9, Hatchet 150, Pusher C9, Top Gun and Mr.Bull 174/1. She sells bred to BM Chapo 851 r# 20187117



JCS 54/2

Consigned by: JCS Ranch

Open Heifer Reg. #20222196 DOB: 03/25/2022

777/0 L-L TRIPP 777

POLLED MULE 1/2 1/8
L-L FARMS INC 613

KNG 927/3

HARCO T155/5 (ET)
SHERRILL'S SQUIRTLE 01/2

JCS DEAN 91/9

EL CAPITAN 5 302
SHERRILL'S WINDY 14/3

07/8

Reg. #20187807

POSSUM WALK 415

BRIGGS 646/9
POSSUM WALK 903

Weights		EPDs									
BW	YW	BW	WW	YW	Milk	TM	HCW	MARB	REA	SC	
		0.4	7	4	5	13	-5	-0.01	0.01	0.27	

Balanced Index: 60% | Cow/Calf Index: 50% | Terminal Index: 70%

JCS 54/2 is a daughter of JCS Tripp 93/7 and out of 07/8 Cow a JCS Dean daughter by Possum Walk 4/5 . Her dams last calving interval was 338 days. Don't miss out on this Polled open heifer.



HISS 704/2

Consigned by: Hiss Family Farm

Open Heifer Reg. #20225738 DOB: 07/04/2022

RED DOC RED WAGON 3264

KR 189/11
OLIVAREZ RANCHES 1-916

MC 609

MC OUTLAW 204
MC 17/9

MC INDY 423/0

MC 423
MC 423/6

[529/9]

Reg. #20198215

HISS 425/8

Reg. #20188825

WENDT NG 623

NG LEGEND 100
WENDT 143

Weights		EPDs									
BW	YW	BW	WW	YW	Milk	TM	HCW	MARB	REA	SC	
50		-1.4	2	-3	0	4	-4	-0.01	0.00	0.35	

Balanced Index: 60% | Cow/Calf Index: 55% | Terminal Index: 60%

This young female is smooth polled , good spring of rib and is gentle. She goes back to Red Doc Red Wagon on the top side and Circle A Sundance and Tinney Farms genetics on her dams side.



RW 71/22

Consigned by: RW Farm

Open Heifer Reg. #20225815 DOB: 05/15/2022

RDF SANCHO'S NEVER BEFORE 1136 RDF SANCHO 7-216
CA3194

RW NEBO 8/17

Reg. #20173801

4/15 REBECCA

CREECH 904
9/7 PEARL

OLC TROUBADOUR

BRIGGS RANCH 583/7
ROSIE 190

SHAKER'S TIZ-ME

Reg. #20174507

SHAKER'S SHERIE

SHAKER'S PLAYBOY 720
SHAKER'S MY STAR

Weights		EPDs									
BW	YW	BW	WW	YW	Milk	TM	HCW	MARB	REA	SC	
65		1.1	12	14	-1	9	0	-0.03	0.05	0.41	

Balanced Index: 75% | Cow/Calf Index: 85% | Terminal Index: 55%

Nice Polled May yearling open heifer sired by RW Nebo a son RDF Never Before and her dam goes back to OLC Troubadour and Shakers Playboy.



RW 6622

Consigned by: RW Farm

Open Heifer Reg. #20225812 DOB: 07/01/2022

RDF SANCHO'S NEVER BEFORE 1136 RDF SANCHO 7-216
CA3194

RW NEBO 8/17

Reg. #20173801

4/15 REBECCA

CREECH 904
9/7 PEARL

305 BOSS

4/8 R W FARM

Reg. #1270927

RW CINDY 2/6

2M 16/9
STORM 52/3

INGOLD'S LEO 74/2
55 R.W. CLASSIC

Weights		EPDs									
BW	YW	BW	WW	YW	Milk	TM	HCW	MARB	REA	SC	
65		0.5	10	9	-1	8	-2	-0.06	0.02	0.39	

Balanced Index: 80% | Cow/Calf Index: 90% | Terminal Index: 65%

Nice Polled May yearling open heifer sired by RW Nebo a son RDF Never Before and her dam goes back to Clyde Moore and Ingold genetics.



RW 26/22

Consigned by: RW Farm

Open Heifer Reg. #20225814 DOB: 08/25/2022

RDF SANCHO'S NEVER BEFORE 1136 RDF SANCHO 7-216
CA3194

RW NEBO 8/17

Reg. #20173801

4/15 REBECCA

CREECH 904
9/7 PEARL

RDF SANCHO'S NEVER BEFORE 1136

RDF SANCHO 7-216
CA3194

PANSY 8/16

Reg. #20165096

WOOD 13/14

CREECH 904
DOUBLE C 8/24

Weights		EPDs									
BW	YW	BW	WW	YW	Milk	TM	HCW	MARB	REA	SC	
70		0.4	17	17	-5	8	3	-0.03	0.08	0.44	

Balanced Index: 70% | Cow/Calf Index: 95% | Terminal Index: 40%

Nice Polled August born open heifer sired by RW Nebo a son RDF Never Before and her dam goes back to MC Earl and Hefley Ranch Genetics. Dont miss this females EPD profile with 5 Traits in the breeds top 30%





RW 31/22

Consigned by: RW Farm

Open Heifer Reg. #20225816 DOB: 01/04/2022

RDF SANCHO'S NEVER BEFORE 1136 RDF SANCHO 7-216
CA3194

RW NEBO 8/17

Reg. #20173801

4/15 REBECCA

CREECH 904
9/7 PEARL

MC INDY 423/0

MC 423
MC 423/6

HISS 519/3

Reg. #20133551

HISS 413/2

BHR CHAPS SIDE KICK 458
RESLER 329 329/03

Weights		EPDs								
BW	YW	BW	WW	YW	Milk	TM	HCW	MARB	REA	SC
68		0.8	10	10	-3	6	-3	-0.02	-0.01	0.38

Balanced Index: 75% | Cow/Calf Index: 90% | Terminal Index: 60%

Nice Polled January yearling open heifer sired by RW Nebo a son RDF Never Before and her dam goes back to MC Earl.



TRIPLE C 12-22

Consigned by: Triple C Cattle Co

Open Heifer Reg. #20225876 DOB: 04/01/2022

RW NEBO 8/17 RDF SANCHO'S NEVER BEFORE 1136
4/15 REBECCA

RW 9/20

Reg. #20203023

HISS 519/3

MC INDY 423/0
HISS 413/2

DOUBLE C 11/31

MR WINROCK S365
DOUBLE C FARMS 9458

HADLEY 15-34

Reg. #20158689

HADLEY 3/1

GRAY OAKS 502 (ET)
2M 12/1

Weights		EPDs								
BW	YW	BW	WW	YW	Milk	TM	HCW	MARB	REA	SC
68	715	0.4	3	2	-1	4	-7	-0.03	-0.08	0.36

Balanced Index: 90% | Cow/Calf Index: 85% | Terminal Index: 85%

Triple C 12-22 is a super polled female that goes back to Red Doc Never before, she is out of one of our best producing dams. Don't miss out on this opportunity to add her to your herd, Sells open ready to breed to your bull.



RS 944

Consigned by: Windcrest Farm

Bred Cow Reg. #20198193 DOB: 06/18/2019

AJH 126/0

CHAPS 372
DOUBLE E 8T39

Harris 11/5

Reg. #20150672

HARCO 1253

HARCO T956 (ET)
HARCO T147/5 (ET)

TF 110 RED SOLO CUP

(O.U.) SUPER STAR 33/5
HARRIS FARMS T002/8 (ET)

RS DREAM

Reg. #20173939

KENZIE

PG WISHBONE 13-7
FIRE BALL 922

Weights		EPDs								
BW	YW	BW	WW	YW	Milk	TM	HCW	MARB	REA	SC
		0.6	5	5	-2	4	-9	-0.11	-0.08	0.27

Balanced Index: 85% | Cow/Calf Index: 80% | Terminal Index: 85%

Young moderate cow with Harris and Harco breeding top. She has Red Solo Cup, CSC, and Playboy on the bottom along with other good blood lines. Sells bred to our Polled Iron Oaks bull (20190969) who has 7 EPD's in the top 45% including 35 on REA and 40 on Marbling. Will be heavy bred at sale time.



DS HILDA

Consigned by: Windy Knob SG

Bred Cow Reg. #20182459 DOB: 05/13/2018

MAGNUM 357

COLT 45/7
MCTYRE 60/7

RR 44 MAG

Reg. #20150303

LF HOLLY BERRY 97

SHAKER'S PLAYBOY 720
J-D TRUDY 24/2 POLLED 24/2

LF REN TEN TEN TEN X19

SOMBRERO 394
LF MAGNOLIA 100

SUZIE MAE [205]

Reg. #20156167

NAF MAGGIE MAE 39

HARRIS FARMS T048/7
NAF TABU 5A22

Weights		EPDs								
BW	YW	BW	WW	YW	Milk	TM	HCW	MARB	REA	SC
81		1.4	18	23	0	13	2	-0.10	0.07	0.38

Balanced Index: 30% | Cow/Calf Index: 30% | Terminal Index: 30%

This proven young female goes back to National Champion Magnum and Shakers Playboy on the top side and LF Ten Ten and TF Sombrero on the dams side. She sells bred to Grizzly Jr r#20170480.



CREECH 391-1

Consigned by: Creech Farm

Bull Reg. #20213092 DOB: 08/30/2021

KR CATALYST 531/15

KR 225/10
KR 310/12 2YO

SR PARADIGM 135/7

Reg. #20175656

P H WELDER 7/342

P H WELDER 9/413
MISS GRANDVIEW 545

HARRIS DOUBLE WIDE 18/2

JP COUCH 306C
HARRIS FARMS 42/8

CREECH MAGNOLIA 101-4

Reg. #20141176

CREECH 213

GUNNIE 803
W H CREEL 911

Weights		EPDs								
BW	YW	BW	WW	YW	Milk	TM	HCW	MARB	REA	SC
732		1.0	4	1	-3	3	-8	0.17	0.03	0.38

Balanced Index: 55% | Cow/Calf Index: 35% | Terminal Index: 70%

Check out this Stout Young Polled Herd Sire, sired by SR Paradigm a son of Catalyst. Check out his Marbling EPD in the breeds top 15%. Scan Data IMF 4.05 and REA 14.9%. Take this bull home and add performance and Marbling to your herd!



WINDCREST CAPTAIN AMERICA

Consigned by: Windcrest Farm

Bull Reg. #20213969 DOB: 09/27/2021

GUNSLINGER 13/5

WR MAVERICK N113 ET
FAYE 10/2

FC PISTOL 28/0

Reg. #1290034

HOLLY 20/3

STONE COLD 21/1
COSSEY 13/9

CIRCLE A MASTERPIECE

MAGNUM 357
MISS GRANDVIEW 21

CIRCLE A 50

Reg. #20182258

TF 3177

TF 217
TF 0130

Weights		EPDs								
BW	YW	BW	WW	YW	Milk	TM	HCW	MARB	REA	SC
	600	0.6	25	28	-3	13	5	-0.18	0.08	0.53

Balanced Index: 35% | Cow/Calf Index: 40% | Terminal Index: 35%

Captain America an own son of FC Pistol on the top side and his dam is a daughter of National Champion Masterpiece. Don't miss his EPD Profile 5 breed traits in the top 15% including top 5% for WW. He is halter broke and has been shown successfully. If you are looking to add performance and phenotype to your herd check out Captain America!



RW 65/21

Consigned by: RW Farm

Bull Reg. #20218112 DOB: 05/21/2021

RDF SANCHO'S NEVER BEFORE 1136 RDF SANCHO 7-216
CA3194

RW NEBO 8/17

Reg. #20173801

4/15 REBECCA

CREECH 904
9/7 PEARL

CREECH 904

GRAY OAKS 502 (ET)
DB 18/2

PEARL [1/16]

Reg. #20161039

9/7 PEARL

INGOLD'S LEO 74/2
49 R.W. FARM

Weights		EPDs								
BW	YW	BW	WW	YW	Milk	TM	HCW	MARB	REA	SC
70	0	1.5	13	13	-2	8	-2	-0.05	0.01	0.38

Balanced Index: 80% | Cow/Calf Index: 90% | Terminal Index: 70%

Take a look at this stout 2 year Old scurred bull sired by RW Nebo a son of Red Doc Never Before. Goes back to Creech Farms and Gray Oaks genetics on his dams side. Had a birth wt. of 70lbs. This bull is semen tested and ready to go to work in your herd.



FIVE J'S 2117

Consigned by: 5J's Cattle Co

Star 5 Bull Reg. #20225867 DOB: 04/24/2022

RDF SANCHO'S NEVER BEFORE 1136 RDF SANCHO 7-216
CA3194

RED DOC NEVER SANK 5012

Reg. #20153072

RED DOC 3001

O/X 752
RDF 6-169

HEREFORD (POLLED)

HEREFORD (POLLED)
HEREFORD (POLLED)

HEREFORD (POLLED)

Reg. #

HEREFORD (POLLED)

HEREFORD (POLLED)
HEREFORD (POLLED)

Weights		EPDs								
BW	YW	BW	WW	YW	Milk	TM	HCW	MARB	REA	SC
73										

Balanced Index: % | Cow/Calf Index: % | Terminal Index: %

Take a look at this stout Yearling Red Mott Bull sired by Santa Gertrudis Bull RDF Never Sank that has been siring our best Star 5 Red Mott sale topping open heifers at recent sales across the country. This young bull had a 74 Lb birth wt and would make a great outcross on your Commercial cow herd. Sells semen tested.

Star 5 Females



5J's Cattle Co. Star 5 Open Heifer Groups

What a group of 40 Star 5 registered Red Mott open heifers. We have taken the best in Santa Gertrudis genetics and crossed with our Hereford Cow herd. This calf crop of heifers has produced Star 5 Sale toppers at the recent Banners & Buckles Sale in Jackson, MS and a group at the Purple Reign Sale in Arkansas. On the show side we produced this year's Reserve National Champion Star 5 female sired by RDF Never Sank daughter that topped the Banners & Buckles Sale at \$15,000. Whether you are looking for your next Star 5 show prospect or Commercial replacement females, these Red Mott females will make it happen!



2023 Reserve National Champion Star 5



RDF Never Sank



48-51 5J's Cattle Co. Pen of 4 Star 5 Open Heifer

Lot 48 ID 1402 R# 20218125
DOB 12/14/21 Sire RDF Never Sank

Lot 49 ID 1306 R# 20218122
DOB 12/30/21 Sire RDF Never Sank

Lot 50 ID 2209 R# 20225945
DOB 2/8/22 Sire RDF Never Sank

Lot 51 ID 1607 R# 20225943
DOB 1/14/22 Sire RDF Never Sank



48-51

Star 5 Females

52-55 5J's Cattle Co. Pen of 4 Star 5 Open Heifer

Lot 52 ID 1407 R# 20218124
DOB 2/20/21 Sire RDF Never Sank

Lot 53 ID 1405 R# 20218121
DOB 12/18/21 Sire RDF Never Sank

Lot 54 ID 2301 R# 20225944
DOB 3/6/22 Sire RDF Never Sank

Lot 55 ID 1304 R# 20218123
DOB 12/31/21 Sire RDF Never Sank



56-59 5J's Cattle Co. Pen of 4 Star 5 Open Heifer

Lot 56 ID 2026 R# 20225948
DOB 2/25/22 Sire Hefta D10

Lot 57 ID 2022 R# 20225951
DOB 3/17/22 Sire RDF CF 131

Lot 58 ID 2305 R# 20225936
DOB 3/4/22 Sire RDF Never Sank

Lot 59 ID 1301 R# 20225947
DOB 2/28/22 Sire RDF Never Sank



Star 5 Females



60-63 5J's Cattle Co.

Pen of 4 Star 5 Open Heifer

Lot 60 ID 2316 R# 20225933
DOB 3/23/22 Sire Hefte G70

Lot 61 ID 2319 R# 20225934
DOB 3/27/22 Sire Hefte G70

Lot 62 ID 2207 R# 20225935
DOB 3/17/22 Sire Hefte G70

Lot 63 ID 2305 R# 20225936
DOB 3/4/22 Sire Hefte G70



64-67 5J's Cattle Co.

Pen of 4 Star 5 Open Heifer

Lot 64 ID 2320 R# 20225937
DOB 3/13/22 Sire Hefte G70

Lot 65 ID 1446 R# 20225938
DOB 3/1/22 Sire Hefte G70

Lot 66 ID 2203 R# 20225939
DOB 2/2/22 Sire Hefte G70

Lot 67 ID 2328 R# 20225940
DOB 2/14/22 Sire Hefte G70



68-71 5J's Cattle Co.

Pen of 4 Star 5 Open Heifer

Lot 68 ID 1448 R# 20218129
DOB 11/27/21 Sire CF 131

Lot 69 ID 1453 R# 20225952
DOB 1/8/22 Sire CF 131

Lot 70 ID 2228 R# 20225941
DOB 3/1/22 Sire Hefte G70

Lot 71 ID 2032 R# 20225942
DOB 3/4/22 Sire Hefte G70



72-75 5J's Cattle Co.

Pen of 4 Star 5 Open Heifer

Lot 72 ID 2021 R# 20225949
DOB 2/7/22 Sire Hefte D10

Lot 73 ID 1103 R# 20218126
DOB 12/26/21 Sire SR 19/F1

Lot 74 ID 1102 R# 20218127
DOB 12/13/21 Sire SR 19/F1

Lot 75 ID 1107 R# 20218128
DOB 12/1/21 Sire SR 19/F1

76-79 5J's Cattle Co. Pen of 4 Star 5 Open Heifer

Lot 76 ID 1108 R# 20225950
DOB 2/21/22 Sire Hefte D10

Lot 77 ID 2051 R# 20225984
DOB 2/23/22 Sire Hefte D25

Lot 78 ID 1445 R# 20218130
DOB 11/27/21 Sire CF 131

Lot 79 ID CP 04 R# 20225986
DOB 3/15/22 Sire



80-83 5J's Cattle Co. Pen of 4 Star 5 Open Heifer

Lot 80 ID 2033 R# 20225958
DOB 3/31/22 Sire Hefte H79

Lot 81 ID 1017 R# 20225953
DOB 12/29/21 Sire CF 131

Lot 82 ID 1016 R# 20218131
DOB 12/28/21 Sire CF 131

Lot 83 ID 2042 R# 20225957
DOB 4/9/22 Sire Hefte H79

84-87 5J's Cattle Co. Pen of 4 Star 5 Open Heifer

Lot 84 ID 777 R# 20225954
DOB 1/8/22 Sire CF 131

Lot 85 ID 1019 R# 20225985
DOB 1/19/22 Sire 1901

Lot 86 ID 2043 R# 20225956
DOB 4/8/22 Sire Hefte H79

Lot 87 ID 2029 R# 20225955
DOB 3/28/22 Sire Hefte H79

88-89 5J's Cattle Co. Two Star Bred Heifers

Lot 88 ID 1047 R# 20213901
DOB 4/10/21

Lot 89 ID 1020 R# 20218132
DOB 10/31/21

Two Santa Gertrudis x Hereford Red Mott bred heifers bred to Hefte H79
r#20201438. Due to calve fall 2023.





90-91 Kade Thigpen

Two Star 5 Open Heifers

Lot 90 9/22 R# 20225843

DOB 3/25/22 Sire KING Ranch 191/13 x Dam Hereford

Lot 91 2/22 R#20225843

DOB 3/27/22 Sire KING Ranch 191/13 x Dam Hereford

These two flush mates combine top genetics from Hefte Ranch and 5J's Beef and cattle. These two females will fit and perform in any environment. Dark cherry red, deep bodied, front pasture females ready to go.

92-93 Triple C Cattle Co

Star 5 OH

Lot 92 ID 16-22 R# 20225877

DOB 4/15/22

Triple C 16-22 is a fancy Red Mott Star 5, She is double polled and is from one of our best Hereford cows. She sells open and ready to breed to your bull. Super nice star 5 Show Quality!

Lot 93 ID 21-22 R#20225878

DOB 5/15/22

Triple C 21-22 is a polled Black White face mott heifer, She will be an asset to your herd. She is out of one of our best performing dams.

94 Windy Knob SG

Star 5 OH

Lot 94 ID 5152 R# 20225849

DOB 5/15/22

Take a look at our Star 5 Open heifer sired by Santa Gertrudis bull Circle A Red Advantage and out of an Angus Cow. She is solid black in color.



WR 305

Consigned by: Lou Al Tuck Farms

Pair w/ HC Reg. #20198132 DOB: 09/18/2019

RED DOC YOSEMITE 5002

RED DOC 3162

RED DOC VISION 3044

Red Doc CHECKMATE 7069

Reg. #20174194

RED DOC 5072

SR 58/0

RDF 7-99

CB WAR HAWK 4/5

FC PISTOL 28/0

HF ROSE 115/8

CB 709

Reg. #20171602

CB 422

CB BEAR 30/2

ALEXANDER 24/6

Weights		EPDs								
BW	YW	BW	WW	YW	Milk	TM	HCV	MARB	REA	SC
68	488	-0.5	12	17	0	9	5	0.01	0.14	0.54

Balanced Index: 40% | Cow/Calf Index: 55% | Terminal Index: 30%

Stout pair cow is sired by RDF Checkmate and goes back to Cotton Branch War Hawk and CB Bear on the dams side. Take a look at her 3 EPD Traits in the breeds top 15% for SC, REA and CW. She sells with her heifer calf born 3/8/23 sired by LAT 319/20. Cows sells open ready to breed.



Harris Pistolero 724G5

Consigned by: Lou Al Tuck Farms

Pair w/ HC Reg. #20195635 DOB: 03/16/2019

FC PISTOL 28/0

GUNSLINGER 13/5

HOLLY 20/3

PISTOLERO [64/5]

Reg. #20157885

HARCO 1247

HARCO T958 (ET)

HARCO T883 (ET)

HARRIS FARMS 56/3

ADIOS 99/126

BRIGGS 061/97

HARRIS FARMS 003/1

Reg. #201101005601

HARRIS FARMS T184/5 (ET)

SCC GRID MAKER 820

BROAD BAY FARM 724

Weights		EPDs								
BW	YW	BW	WW	YW	Milk	TM	HCV	MARB	REA	SC
65	435	0.6	1	22	6	10	9	0.10	0.19	0.37

Balanced Index: 50% | Cow/Calf Index: 90% | Terminal Index: 20%

A proven Pistolero daughter, check out her EPD profile 5 traits in the top 15% including Milk and Marbling! She sells with her heifer calf born 5/15/22 sired by Grandview 366T. Cow sells Aled to Harris 190E on 10/18/22 due to calve June 2023.



L.A.T. 10.25.2017

Consigned by: Lou Al Tuck Farms

Pair w/ HC Reg. #20177228 DOB: 10/25/2017

WENDT GERONIMO 3983

WENDT 3277
WENDT 4909

GRANDVIEW 366T

Reg. #20135525

BRIGGS 003/99

BRIGGS 023/91
B.F.STOUT 502

SHAKER'S STAR 4 Z3

(O.U.) SUPER STAR 33/5
L A T 820/02

HAMAN FARMS 4/22

Reg. #20141011

DDR MAX'S GYPSY 118

MAXIMUM MOMENTUM 7/3
MC M4

Weights		EPDs									
BW	YW	BW	WW	YW	Milk	TM	HCW	MARB	REA	SC	
		0.2	2	0	1	6	-9	-0.02	-0.08	0.08	

Balanced Index: 85% | Cow/Calf Index: 80% | Terminal Index: 85%

Nice pair cow is sired by Grandview 366T a Geronimo son and she goes back to OU SuperStar on her dams side. Sells with her heifer calf born 7/9/22 sired by 366T. Cow sells bred back to 366T.



DVAuction
Broadcasting Real-Time Auctions

www.dvauction.com

Watch & Bid Online* for FREE!

Can't make the sale?

Let DVAuction bring the sale to you!

Busy during the sale?

Let DVAuction represent your bid!

Visit www.dvauction.com and register!

It's as easy as 1, 2, 3...

1. Create an account at www.dvauction.com under the "create new account" tab.
2. Apply for bidding by clicking "apply for bidding" in the upper left corner of your screen at least 24 hours prior to the auction.
3. Tune into the sale and make your purchase!

For general questions, please contact the DVAuction office: (402) 316-5460 or email support@dvauction.com

**High speed internet access required*

Notes

Notes

This image shows a single sheet of white paper with horizontal ruling lines. The lines are evenly spaced and run across the width of the page. There are no margins, text, or other markings on the paper.

NEED BULLS?

We have private treaty bulls available for sale, as well as semen from some of the breed's top young sires.

HEFTE RANCH
Santa Gertrudis



CONTACT US.

Kathryn Hefte 210 414 2493
KT Hefte 361 813 2937
Kade Thigpen 830 426 1366

2023 STRAIT-HEFTE

Tried & True

OCTOBER 20-21, 2023 **PRODUCTION SALE**

320 FM 3059 | STREETMAN, TEXAS



STRAIT
Ranches

Y.N. STRAIT FAMILY

Streetman, Texas
Yancey 972.841.0989 | yanceystrait@straitranches.com
Callie 210.837.1199 | callie@straitranches.com
Henry Zarate, Manager | 361.920.0718
WWW.STRAITRANCHES.COM



HEFTE RANCH

Hondo & Agua Dulce, Texas
Kathryn 210.414.2493
Kade 830.426.1366
KT 361.813.4937
hefteranch@gmail.com
WWW.HEFTERANCH.COM



*Proven,
Performance Genetics*
to meet the needs of our
seedstock and commercial
customers.

Request a catalog at TriedandTrueSale.com



A Santa Gertrudis Weekend

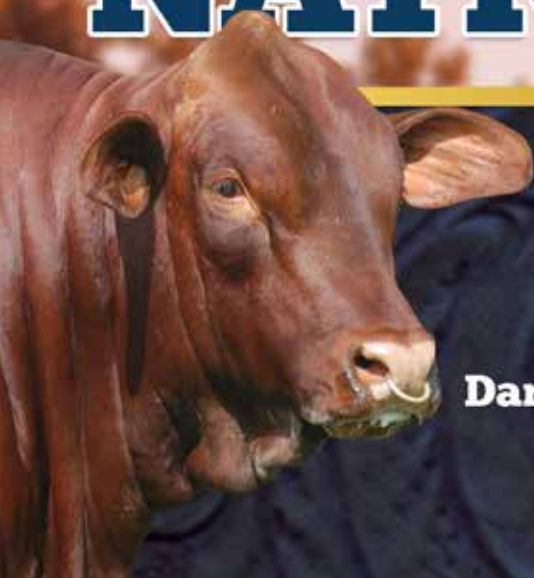
in beautiful Kentucky Bluegrass Country

45th

KENTUCKY NATIONAL *Show & Sale*

JULY 14 & 15, 2023

United Producers
Stockyards
Bowling Green, KY



Show July 14, 10:00 am • Sale July 15, 11:00 am
Kentucky Jr. Assn Show July 15 following the Sale

To consign or Catalog Request contact
Darren Richmond • 423 364 9281 • djrichmd@gmail.com

Sale Chairman • Chip Parker
270-590-9400 • chip.parker66@icloud.com

RICHMOND MARKETING SERVICE



UPCOMING EVENTS

July 14-15, 2023 Kentucky National Show & Sale
Bowling Green, KY

September 15-16, 2023 District 6 Show & Sale
Corydon, IN

October 7, 2023 Alabama Connection Sale
Tinney Farms Hanceville, AL

November 4, 2023 Mountain Laurel Classic Sale
Calhoun, GA



Sales Management, Photography & Video

Darren Richmond • 78 Creek Ct. Ringgold, Ga. 30736 • 423-364-9281 • djrichmd@gmail.com

Rockin' B Farm

Quality Santa Gertrudis Cattle

Staley, NC



Successfully improving our herd every year with the use of A.I. and IVF Technology by using multiple sires: Jackpot, Chosen One, Copperhead 915C4, Surge, Red Carpet, Top Cat, Pistol and Never Surrender. And crossing with Dams by Vegas, Grandview Annie, Dreamboat, Harco T 956.

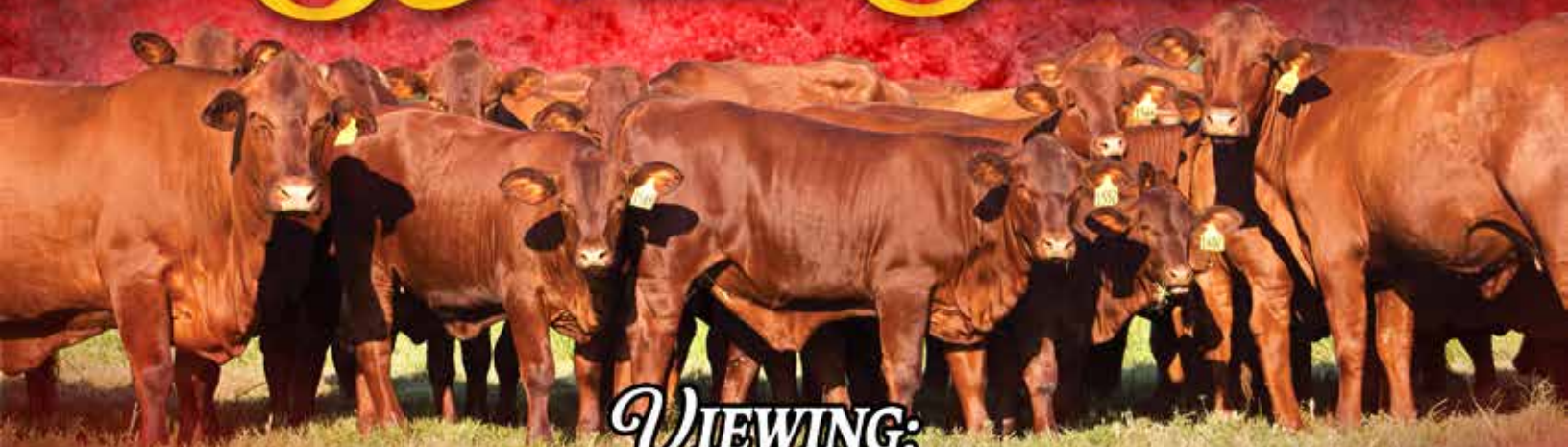


Rockin' B Farm
5173 White Chapel Rd.
Staley, NC



Mickey Bowman | 336.669.5771
Josh Bowman | 336.215.4774
bowman.agr.1212@gmail.com

4TH ANNUAL WENDT'S BABY DOLL SALE



VIEWING:
SATURDAY AUGUST 26, 2023

SALE DATE:
TUESDAY AUGUST 29, 2023

www.sconlinesales.com

MARK YOUR CALENDARS

Don't miss this year's event. We will be selling purebred Santa Gertrudis and new this year, offering Star 5's for the first time EVER!

Looking for an incentive? If a heifer purchased in our annual Baby Doll sale wins the Purebred National Santa Gertrudis Open or Jr. Show, we will award them \$10,000!

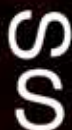
WENDT RANCHES PARTNERS LLC

5475 FM 457, Bay City, TX

Email: wendtranches@hotmail.com

Gene Kubecka 979-240-5311 | Daniel Kubecka 979-240-5312

SGBI Herd #621, established 1954



Integrity, Quality, Tradition & Hospitality

35th Annual Santa Gertrudis

ALABAMA CONNECTION SALE



Mark your calendar!

**11:00 a.m.
October 7, 2023**

Hosted by Tinney Farms,
Hanceville, Ala.

80 REGISTERED FEMALES



Tinney
FARMS
EST. 1980

Arlin Taylor, Manager
Hanceville, Ala. • (256) 507-3838
arlin.taylor@bhamfast.com
tinneyfarms.com

Q QUAIL
VALLEY
FARMS

Ricky Cleveland, Owner
Oneonta, Ala.
(205) 533-5049
ricky@xcelmasonry.com

GRANDVIEW FARMS

Delmo & Wilmoth Payne, Owners
Hamilton, Ala.
Cell: (205) 468-5319
delmo.payne@gmail.com
grandviewfarm.biz

DVAuction
Broadcasting Real-Time Auctions

Contact Darren Richmond for more information
(423) 364-9281 or djrichmd@gmail.com



CREEP FEEDING AND THE BENEFITS

- Increased weaning weights
- Healthier calves at weaning
- Calves know how to eat at weaning
- Improves calf uniformity
- Reduces pressure on pastures and forages
- Increases hot carcass weights
- Positively affects marbling

CREEP FEEDING OPTIONS

PLF 16% Ultra Gain – Also available with Bovatec or Rumensin

PLF 14% Fast Start – Also available with Bovatec or Rumensin

PLF 16% Extra – Also available with Bovatec or Rumensin

PLF 14% High Energy Plus – Also available with Bovatec or Rumensin

PLF 15% Extra Calf – Available with Bovatec

We also have these minerals available

- **PLF 2:1 BEEF MIN CINNGAR**
- **PLF BEEF MINERAL CINNGAR**
- **PLF HI MAG BF BRDR MIN CINNGAR**
- **PLF HI MAG BF GRAZ MIN CINNGAR**
- **PLF ULTGAIN HMG BF MIN CINNGAR**

Call for more information



YOUR CARCASS, CUT YOUR WAY!

BEEF • PORK • LAMB • GOAT

Piedmont
Custom Meats, Inc.

SLAUGHTER FACILITY

**9683 Kerrs Chapel Road
Gibsonville, NC**

PROCESSING FACILITY

**403 NC Hxy 49 S
Asheboro, NC**



USDA SLAUGHTER PROCESS

We are a processor offering slaughter and processing service only. We DO NOT buy or sell any meat products.

www.PiedmontCustomMeats.com

(336) 628-4949



Windy Hill Farms, LLC

In Vitro Fertilization (IVF) Embryo Services;

Ramseur, NC



POWERED BY  **Vytelle**



Offering Vytelle's proprietary IVF technology to the Mid-Atlantic region to enable faster genetic gains in customers' herds

2023 IVF Event Dates

- 4/12
- 5/17
- 6/14
- 9/13
- 10/11
- 11/8

**4763 Rainbow Trail
Ramseur, NC 27316**

**Will Moss
(336) 460-7451**

**windyhillfarmsllc@gmail.com
windyhillfarmsllc.com**



40 Years, 3 Generations

SGBI Herd #9994



Lot 11 • BM 190 • Sells Bred to Jet Stream J125



Lot 12 • BM 178 • Sells Bred to Jet Stream J125



Jet Stream J125 • R# 20212125 • Plus Semen \$50/straw | Co-Owned by Five J's Cattle Co

Our latest herd sire edition J125. Co-owned with 5 J's Cattle Co.

SEMEN \$50 PER STRAW

Nathan Barlowe
828-292-7444

Jim & Alan Barlowe
828-493-2266

Sale Terms & Conditions

Except for those stated in the below terms and conditions, there are no warranties, either expressed or implied, as to the merchantability or fitness for a particular purpose with respect to the cattle being sold at this auction.

TERMS: Terms of sale are cash or check payable at sale location.

DISPUTES: Each animal will be sold to the highest bidder. In case of disputes, bidding will be reopened between the parties involved.

HERD HEALTH: Each animal must have an individual health certificate indicating a clean test for Brucellosis (Bangs) and Tuberculosis (TB) within 30 days of the sale. Cattle from certified and accredited herds do not require tests, but an interstate certification of veterinary inspection (ICVI) is still required.

PURCHASER'S RISK: Each animal becomes the risk of the purchaser as soon as sold. Animals will be cared for at the purchaser's risk for a reasonable length of time.

ANNOUNCEMENTS: Announcements from the auction block will take precedence over the printed matter in this catalog. Buyers are therefore cautioned to pay attention to any such announcements.

BREEDERS GUARANTEE: Cows represented as being pregnancy tested "safe in calf" have been examined and declared safe by a licensed veterinarian and will be accompanied by a veterinarian's certificate to this effect. They are considered breeders without further guarantee. Cows with calves at side shall be considered breeders also without further guarantee. Cows and heifers represented as "bred" are not guaranteed safe in calf, but they and open heifers selling as individual lots are guaranteed breeders. No guarantee shall apply to suckling calves. No guarantee is given that a pregnant female will deliver live calves or that she will carry calves full term. The seller is not responsible for damages caused by foreign bodies after the animal has been sold and for sickness not apparent at sale time. Bulls sell with satisfactory semen test within 30 days of sale.

ACCIDENTS: Although every precaution will be taken to protect the safety and comfort of buyers, neither the Sales Management, Auctioneer nor seller assumes any responsibility in this manner and denies any liability, legal or otherwise, in the event of accident or loss of property.

LIABILITY: The Sales Management and/or Auctioneer has been employed by the consignor(s) of the animals being sold solely for the purpose of advertising and conducting the subject sale. All information regarding the subject animals as published in the sale brochure and as announced at the sale is based on the representation made to the Sales Management and/or Auctioneer by the consignor(s). The Sales Management and/or Auctioneer has not made any independent investigation to verify title, health, registration and lien status of the subject animals. The Sales Management and/or Auctioneer make no representations, either expressed or implied, as to whether or not the subject animals are security under any lien, legal or equitable.

5J'S CATTLE COMPANY



Look For Our Consignments

*** 50th Anniversary ***

BREEDERS



OF THE CAROLINAS SALE

May 13, 2023

NEW LOCATION: Monroe, N.C.

SELLING 40 RED MOTT OPEN HEIFERS

Featured Lot

Open heifer sired by H79, a half brother to El Primero and out of an RDF Never Sank daughter. Her EPD profile puts 5 traits in the breeds TOP 25%.



Five J's 06/22 | #20220385

Our Thanks!

PURPLE REIGN SALE BUYERS

- Chad Coker, Stephenville, Texas
- TB Cattle Farm, Troup, Texas
- M Rock Farm, Texarkana, Texas



FIVE J'S CATTLE COMPANY

Jody Standley, Owner

Clayton, NC

(919) 291-4212

Kim Y. Prestwood, Manager | (828) 320-7317

www.FiveJsFarm.com



Richmond Marketing Service
78 Creek Ct.
Ringgold, Ga. 30736

50th Annual BREEDERS OF THE CAROLINAS SALE

Saturday, May 13, 2023 | 11 am

Union County Agri Center
Monroe, N.C.

