

Integrity. Quality. Tradition & Hospitality

31st Annual

ALABAMA CONNECTION SALE

October 4 & 5, 2019

Hosted by Quail Valley Farms, Blountsville, Ala.

**50 BULLS &
50 CROSSBRED FEMALES**

1:00 p.m., Friday, Oct. 4

BREED'S FIRST
100%
GENOTYPED
SALE

**80 REGISTERED
FEMALES**

11:00 a.m., Saturday, Oct. 5



*The Alabama Connection members are
proud to welcome Santa Gertrudis
2019 World Congress Attendees!*

Santa Gertrudis **2019** **USA**
WORLD CONGRESS
★★★ 4-19 OCTOBER | GROWING GLOBALLY ★★★

DVAuction
Broadcasting Real-Time Auctions

Sale to be broadcast on www.dvauction.com
See details on page 1.

31st Annual Santa Gertrudis **ALABAMA CONNECTION SALE**

October 4 & 5, 2019

Hosted by Quail Valley Farms
Blountsville, Ala.



SELLING Friday, Oct. 4 at 1 p.m. **50 Santa Gertrudis Bulls**

These bulls come with more data than any other Santa Gertrudis bulls to sell! Performance tested, ultrasound data and from the best genetics in the breed!



50 Crossbred Females

Open & Bred
SG x Hereford x
Brangus x FI Crosses



Saturday, Oct. 5 at 11 a.m.



80 Registered Females Sell

Tinney Farms

Arlin Taylor, Manager
Hanceville, Ala. • (256) 507-3838
arlin.taylor@bhamfast.com
tinneyfarms.com



Dennis Jones, Owner
Russellville, Ala. • Cell: (941) 735-9391
Farm: (256) 332-0615

QUAIL VALLEY FARMS

Ricky Cleveland, Owner
Oneonta, Ala. • (205) 533-5049
ricky@xcelmasonry.com



Delmo & Wilmuth Payne, Owners
Hamilton, Ala. • Cell: (205) 468-5319
delmo.payne@gmail.com
grandviewfarm.biz



Contact Darren Richmond for catalog requests:
(423) 364-9281 or djrichmd@gmail.com

31st Annual Alabama Connection

Santa Gertrudis Production Sale

October 4 & 5, 2019
Quail Valley Farms • Blountsville, Ala.

General Information

Schedule of Events

Friday, October 4

9:00 AM -12:45 PM Cattle Viewing
1:00 PM 31st Annual Alabama Connection
Bull & Crossbred Female Sale
6:00 PM Appreciation Dinner
7:00 PM Live Entertainment

Saturday, October 5

7:00 -10:45 AM Cattle Viewing
11:00 AM 31st Annual Alabama Connection
Female Sale

Auctioneer

Hoover Case 417-844-6020

Ringmen

Nathan Lipscomb, Andy Grimes, Darren Richmond

Sale Consultants

Darren Richmond
Richmond Marketing Services, Inc.
423-364-9281
djrichmd@gmail.com

Bill Lundberg, Russellville, AR
479-880-6217
lundbergcss@yahoo.com

Sale Location

GPS Address:
17761 County Rd. 26, Blountsville, AL

Sale Day Phones

Dennis Jones 941-735-9391
Brent Shaw 205-412-5761
Arlin Taylor 256-507-3838
Ricky Cleveland 205-533-5049
Darren Richmond 423-364-9281
Bill Lundberg 479-880-6217

Hotel Information

CULLMAN HOTELS (located on I-65, exit 310)

Quality Inn • 256-734-1240

Holiday Inn Express • 256-736-1906

Best Western • 256-737-5009

Econo Lodge • 256-734-0122

Comfort Inn • 256-255-5999

Quality Inn, HANCEVILLE, AL • 256-352-0151

Days Inn, ONEONTA, AL • 205-274-2200



DVAuction
Broadcasting Real-Time Auctions

www.dvauction.com

Watch & Bid Online* for FREE!

Can't make the sale?

Let DVAuction bring the sale to you!

Busy during the sale?

Let DVAuction represent your bid!

Visit **www.dvauction.com** and register!

It's as easy as 1, 2, 3...

1. Create an account at www.dvauction.com under the "create new account" tab.
2. Apply for bidding by clicking "apply for bidding" in the upper left corner of your screen at least 24 hours prior to the auction.
3. Tune into the sale and make your purchase!

For general questions, please contact the DVAuction office: (402) 316-5460 or email support@dvauction.com

*High speed internet access required

Welcome to the Alabama Connection Sale!

If this is your first time attending or if you are with the SGBI World Congress 2019 group, welcome. Many of you here haven't missed a sale in 30 years and we thank you for your loyalty. We are very excited this year to welcome to the Connection group Ricky and Angie Cleveland and family at Quail Valley Farms, and we are privileged to use their new state-of-the-art sale facility in Blountsville, Ala.



For more than 30 years, Alabama Connection members have lived by the motto "Integrity, Quality, Tradition & Hospitality." We are excited this year to be the Santa Gertrudis breed's first 100 percent DNA-genotyped sale. As you look through our catalog, you will see that we have provided buyers with the most data possible to make your selections fault free, including all EPDs, scan data and performance records on our bull consignments. Along with 80 registered females and 50 data-proven bulls, we will also offer 50 Santa Gertrudis-influenced crossbred females.

If you have any questions before, during or after the sale, see Arlin Taylor, Dennis Jones, Delmo Payne or Ricky Cleveland. We could not sponsor this sale without a lot of good help from a lot of good people. Our crews have done an outstanding job preparing for this sale. Brian Wood and Josh Lathum at Quail Valley Farms; Brent Shaw, manager, and Seth Holmes at Grandview Farms; Austin Logan, farm manager, at Gray Oaks Farm; and herdsman Adam Seckfort at Tinney Farms make our job offering this type of cattle much easier.

Bill Lundberg, Darren Richmond and Hoover Case also have played an active role in preparing for this sale and are available to answer any questions before and during the sale. Quail Valley Farms information and questions can be directed toward Richard Hood and AMS Marketing.

Thank you for attending and supporting another Alabama Connection Sale.



Grandview Farms **Delmo & Wilmuth Payne, Owners**

Cell: 205-468-5319
delmo.payne@gmail.com

Brent Shaw, Manager: 205-412-5761
Seth Holmes, Herdsman: 205-412-7053
5400 Bexar Ave. East • Hamilton, AL 35570
www.grandviewfarm.biz



Gray Oaks Farm **Dennis Jones, Owner**

Cell: 941-735-9391 • Farm: 256-332-0615
tj31087@aol.com
Austin Logan, Farm Mgr: 256-335-8821
Bill Lundberg, Consultant:
479-880-6217
905 Foxtrap Road • Russellville, AL 35654



Quail Valley Farms **Ricky Cleveland, Owner**

205-533-5049
ricky@xcelmasonry.com
Brian Wood, Farm Mgr: 205-410-7834
848 Jan St., Oneonta, AL 35121
Richard Hood, AMS Marketing Consultant:
979-224-6150



Tinney Farms **Arlin Taylor, Manager**

256-507-3838
arlin.taylor@bhamfast.com
Adam Seckfort, Herdsman:
256-338-7854
5251 Co. Rd. 601 • Hanceville, AL 35077
www.tinneyfarms.com



*Integrity. Quality.
Tradition & Hospitality!*

Joining the Alabama Connection group this year are Ricky and Angie Cleveland and family of Quail Valley Farms. We are privileged to use their new state-of-the-art sale facility in Blountsville, Ala.

On behalf of Santa Gertrudis Breeders International, welcome to the Alabama Connection Bull Sale and the 31st Anniversary Alabama Connection Sale. As you examine the offerings, rest assured that you can make your selections with confidence. SGBI's genetic evaluation is one of the most comprehensive among the *Bos indicus*-influenced breeds, ensuring a selection of profitable genetics for your operation.

Over the last nine years, Santa Gertrudis breeders have increased selection pressure on traits that have a positive influence on profitability. Profit starts with a live calf and increases when industry endpoint targets are hit. In 2018, SGBI released two fertility EPDs – Heifer Pregnancy and Breed Back – emphasizing that Santa Gertrudis breeders are focused on reproduction efficiency. Recently released harvest data, collected by the West Texas A&M University Beef Carcass Research Center, shows Santa Gertrudis cattle hit industry endpoint targets, grading 96 percent Choice/Premium Choice.

Regardless of your marketing strategy – selling by the pound at weaning, retaining ownership and grid-marketing, establishing a consumer-direct market or taking advantage of the replacement female market – Santa Gertrudis genetics ensure that herd goals can be reached. **SANTA GERTRUDIS are DATA DRIVEN and PROFIT PROVEN.**



John Ford
Executive Director
Santa Gertrudis Breeders International

SGBI Expected Progeny Differences

Expected Progeny Differences (EPDs) are the prediction of how future progeny of each animal are expected to perform relative to the progeny of other animals listed in the SGBI database. EPDs are expressed in units of measure (plus or minus) for each trait being evaluated and are calculated utilizing pedigree and performance information. SGBI is also a leader in the adoption and implementation of cutting-edge genetic technology.

In 2013, SGBI released the first genomic-enhanced expected progeny differences (DNA verified) for *Bos indicus*-influenced cattle. The inclusion of DNA into the breed's EPD calculations (GE-EPDs) has resulted in information that is more accurate and predictable than a pedigree and performance prediction alone.

Currently, the association's database contains more than 12,000 performance-verifying DNA samples. In addition, to being the first *Bos indicus*-influenced breed to offer GE-EPDs, SGBI was the first beef breed to implement single-step methodology for the incorporation of genetic information into genetic evaluation. This approach maximizes use of data reported on all animals throughout the pedigree and greatly improves EPD accuracy.

SGBI Indices

SGBI offers commercial cattlemen two selection indices. Indices are multi-trait selection tools designed to assist commercial producers by adding simplicity to genetic selection decisions. Indices provide an estimate of how future progeny of each sire are expected to perform, on average, compared to progeny of other sires in the database if the sires were randomly mated to cows, and the calves were exposed to the same environment. SGBI's indices provide performance insight to producers marketing yearlings by the pound (\$Growth) or retaining ownership through the feedyard (Carcass Rank).

\$Growth Index – The \$Growth Index is a dollar index that puts together weaning weight (WW) and yearling weight (YW). Since WW is contained in YW, post-weaning gain (PWG) is used in the index to prevent double counting WW. For example, if an animal has a +30 \$Growth Index, its offspring will be, on average, worth \$30 more as a yearling than the breed average, based strictly on weight. Please note, the \$Growth Index puts zero economic weight on maternal traits, so utilizing the index as a replacement female selection tool might result in larger mature-weight cows.

Carcass Rank – The Carcass Rank Index contains marbling score, hot carcass weight, ribeye area, backfat and tenderness, and is weighted by the economics of carcass values. It is expressed as a numeric ranking within the breed from 1 to 10, with 10 being the highest.

For example, an animal with a score of 9 would be in the 80th percentile or would be better than 80 percent of the population in carcass composition. A ranking of 6 would place the animal in the 50th percentile. Carcass Rank Index places strong emphasis on growth and carcass traits. Utilizing Carcass Rank as a seedstock selection tool might result in increased growth while negatively impacting marbling.

Seedstock producers focused on improved carcass quality are encouraged to utilize SGBI's Marbling EPD in the decision-making process. Breeding cattle with higher marbling EPDs should produce progeny with a higher degree of intramuscular fat (IMF) and, therefore, higher USDA Quality Grades.

SGBI EPD Percentiles by Trait

August 2019

Percentile	Birth Weight	Weaning Weight	Milk	Yearling Weight	Carcass Weight	Ribeye Area	Marbling	Fat	Tender-ness	Scrotal	HPreg	BBK
Best	-8.598	44.326	25.8301	82.995	48.888	0.7646	0.4467	-0.1339	-0.6718	2.342	2.285	1.891
Top 1%	-2.481	17.681	9.0755	25.635	18.178	0.2412	0.0830	-0.0118	-0.0726	0.748	0.468	0.371
Top 2%	-2.047	15.120	7.6590	21.615	15.342	0.1952	0.0634	-0.0095	-0.0539	0.627	0.277	0.197
Top 3%	-1.763	13.526	6.7806	19.125	13.665	0.1686	0.0523	-0.0081	-0.0432	0.562	0.195	0.143
Top 4%	-1.589	12.381	6.1566	17.356	12.468	0.1504	0.0446	-0.0071	-0.0362	0.521	0.156	0.121
Top 5%	-1.509	11.451	5.6781	15.969	11.521	0.1359	0.0393	-0.0064	-0.0314	0.494	0.132	0.106
Top 10%	-1.110	8.369	4.2016	11.361	8.290	0.0911	0.0237	-0.0040	-0.0155	0.439	0.092	0.075
Top 20%	-0.748	4.769	2.7156	6.359	4.641	0.0474	0.0124	-0.0018	-0.0041	0.433	0.074	0.067
Top 30%	-0.718	2.250	1.5753	2.924	2.119	0.0219	0.0102	-0.0006	0.0004	0.428	0.067	0.067
Top 40%	-0.580	0.141	0.6700	0.291	0.053	0.0059	0.0101	0.0002	0.0031	0.391	0.067	0.059
Top 50%	-0.346	-1.619	0.6487	-2.016	-1.666	-0.0025	0.0062	0.0009	0.0049	0.361	0.066	0.049
Top 60%	-0.077	-3.316	0.1083	-3.909	-3.205	-0.0042	0.0011	0.0013	0.0049	0.330	0.060	0.038
Top 70%	0.221	-4.202	-0.8658	-3.943	-3.524	-0.0202	-0.0059	0.0013	0.0055	0.292	0.051	0.024
Top 80%	0.574	-4.462	-2.0832	-5.374	-4.301	-0.0418	-0.0169	0.0021	0.0098	0.240	0.036	0.004
Top 90%	1.087	-6.762	-3.9322	-8.648	-6.668	-0.0755	-0.0349	0.0040	0.0191	0.153	0.002	-0.034

Thank You to Our Sale Sponsors!



PURINA



JOHN DEERE



Friday Night Entertainment Sponsored by Quail Valley Farms

Sale Terms & Conditions

Except for those stated in the following terms and conditions, there are no warranties, either expressed or implied, as to the merchantability or fitness for a particular purpose with respect to the cattle being sold at this auction.

TERMS: The terms of the sale are cash or check, payable at sale location.

DISPUTES: Each animal will be sold to the highest bidder. In case of disputes, bidding will be reopened between parties involved.

HERD HEALTH: Cattle from accredited herds will have an interstate health certificate. Other sale animals will have an individual health certificate indicating a clean test for Brucellosis (Bangs) and Tuberculosis (TB) within 30 days of the sale.

PURCHASER'S RISK: Each animal becomes the risk of the purchaser as sold. Animals will be cared for at the purchaser's risk for a reasonable length of time.

ANNOUNCEMENTS: Announcements from the auction block will take precedence over the printed material in this catalog. Buyers are therefore cautioned to pay attention to any such announcements.

CERTIFICATE OF REGISTRY: The proper registration will be duly transferred and furnished to the buyer for each animal after settlement has been made.

BREEDER'S GUARANTEE: Cows represented as being pregnancy tested "safe in calf" have been examined and declared safe by a licensed veterinarian and will be accompanied by a veterinarian's certificate

to this effect. They are considered breeders without further guarantee. Cows with calves at side shall be considered breeders also without further guarantee. Cows and heifers represented as "bred" are not guaranteed safe in calf, but they and open heifers selling as individual lots are guaranteed breeders. No guarantee shall apply to suckling calves. No guarantee is given that a pregnant female will deliver a live calf or that she will carry a calf full term. The seller is not responsible for damages caused by foreign bodies after the animals have been sold and for sickness not apparent at sale time. Bulls sell with satisfactory semen test within 30 days of sale.

ACCIDENTS: Although every precaution will be taken to protect the safety and comfort of buyers, neither the Sales Management, Auctioneer nor seller assumes any responsibility in this manner and disdains any liability, legal or otherwise, in the event of accident or loss of property.

LIABILITY: The Sales Management and/or Auctioneer has been employed by the consignors of the animals being sold solely for the purpose of advertising and conducting the subject sale. All information regarding the subject animals as published in the sale brochure and as announced in the sale is based on representation made to the Sales Management/Auctioneer; they have not made any independent investigation to verify title, health, registration and lien status of the subject animals. The Sales Management and/or Auctioneer make no representations, either expressed or implied, as to whether or not the subject animals are security under any lien, legal or equitable.

BULLS: All bulls sell semen and trich tested.

SANTA GERTRUDIS BULL OFFERING

LOT

1



QUAIL VALLEY 915F2 ET

Quail Valley Farms

20180381 | 915F2 | 2/1/2018 | Bull

FC PISTOL 28/0

1290034

GUNSLINGER 13/5

HOLLY 20/3

COPPERHEAD 214

C-P MISS COPPERHEAD 915C5

20151423

SILVA 915/3

WR MAVERICK N113 ET

FAYE 10/2

STONE COLD 21/1

COSSEY 13/9

BIG ORANGE EXPRESS 42/7

TINNEY 923

RDF SANCHE 7-216

SILVA 634/7

Gain Test Data

ADG	3.39
IMF	4.67
REA	13.18
REA/cwt	1.04
SC Adj	36.9
Yrig Wt	1231

	BW	WW	YW	Milk	T MAT	REA	Marb	FAT
EPDs	2.45	25.97	42.75	3.21	16.19	0.25	0.03	0.00
Accuracy	0.33	0.40	0.41	0.25	—	0.31	0.33	0.44

	HCW	Sh F	H Prq	Brd Bk	SC	\$G	Carc Idx
EPDs	28.92	-0.02	-0.04	-0.01	1.09	40.31	10
Accuracy	0.30	0.21	0.10	0.10	0.38		

Selling full possession and 50% semen interest! QVF 915F2 is a breed benchmark bull! He writes an incredible 8 EPD traits in the Top 20%. We have as progressive an ET program as anywhere in the United States – planning, mapping, selecting and mating everything in order. It is very hard to produce such a balanced animal as this young herd sire prospect!. His 915 cow family is based on one of the most influential cows today in the breed – Silva 915/3. His dam, 915C5, was selected as a heifer to be a donor in our program. We plan to use this young herd sire in our AI and ET program and would work with the buyer in a semen-marketing partnership if the buyer so chooses.



Lot 2

with tremendous base width, bone and muscle pattern. Top 1% in WW, YW, HCW and REA. Grandview Farms retains 50% semen interest. Selling full possession.

LOT

3



GRAY OAKS 841

Gray Oaks Farm

20182235 | 841 | 4/24/2018 | Bull

VIPER 400

20140758

TF 909

TF 708

PAYDAY 0049

LAT 719/6

1261266

M&M 70-0

COPPERHEAD 214

LIBERTY RANCH 53/110

KUBECKA 47

TF 486

WENDT GERONIMO 3983

BLACK WARRIOR FARM 6/8

KINCANNON 211/7

CVF 7089

Gain Test Data

ADG	4.76
IMF	3.86
REA	12.33
REA/cwt	1.11
SC Adj	40.6
Yrig Wt	1176

	BW	WW	YW	Milk	T MAT	REA	Marb	FAT
EPDs	1.09	3.32	7.70	4.58	6.24	-0.01	-0.03	0.00
Accuracy	0.30	0.33	0.31	0.21	—	0.21	0.22	0.33

	HCW	Sh F	H Prq	Brd Bk	SC	\$G	Carc Idx
EPDs	5.78	-0.01	-0.04	-0.09	0.62	6.72	3
Accuracy	0.25	0.21	0.10	0.10	0.33		

Don't miss this high-performing herd sire prospect. He was the highest ADG bull out of 90 bulls on the Tinney Farms Gain Test! Sired by Viper 400, and his dam, LAT 719/6, goes back to Wendt Geronimo. His numbers back up his performance with 6 traits in the breed's Top 25%.



Lot 3

LOT

2



GRANDVIEW 9115F1 ET

Grandview Farms

20182507 | 9115F1 | 3/1/2018 | Bull

FC PISTOL 28/0

1290034

GUNSLINGER 13/5

HOLLY 20/3

TF 395

MISS GRANDVIEW 9115

20097364

MISS GRANDVIEW 1112

WR MAVERICK N113 ET

FAYE 10/2

STONE COLD 21/1

COSSEY 13/9

HATCHET 150

SUGAR 97/006

RED ANGUS

MISS GRANDVIEW 696

Gain Test Data

ADG	3.79
IMF	4.23
REA	13.50
REA/cwt	1.14
SC Adj	36.6
Yrig Wt	1150

	BW	WW	YW	Milk	T MAT	REA	Marb	FAT
EPDs	2.34	24.83	37.71	-1.27	11.14	0.27	-0.02	0.01
Accuracy	0.29	0.28	0.27	0.12	—	0.19	0.20	0.27

	HCW	Sh F	H Prq	Brd Bk	SC	\$G	Carc Idx
EPDs	27.04	0.00	-0.13	0.03	0.69	36.33	10
Accuracy	0.17	0.00	0.00	0.00	0.26		

A Pistol 28/0 son out of the prolific 9115 donor cow. Big hip, strong top

SANTA GERTRUDIS BULL OFFERING

LOT

4

HT

TF PROSPECTOR 753

Tinney Farms

20181333 | 753 | 1/2/2018 | Bull

KR 97/10

1288482

TF 4139

20158552

RDF 8052

KR N2/5 4A

TF 909

BHR KIRSTEN 647

KR 659/06

RDF 6-76

SUDDEN IMPACT 3R

KR 58/001

COPPERHEAD 214

LIBERTY RANCH 53/110

2 S RANCH 650

WENDT 7945

Gain Test Data

ADG	3.36
IMF	4.13
REA	13.14
REA/cwt	1.17
SC Adj	38.1
Yrlg Wt	1046

	BW	WW	YW	Milk	T MAT	REA	Marb	FAT
EPDs	0.45	10.00	14.99	-6.57	-1.57	0.16	0.07	0.00
Accuracy	0.34	0.40	0.41	0.25	—	0.28	0.27	0.36

	HCW	Sh F	H Prq	Brd Bk	SC	\$G	Carc Idx
EPDs	8.09	0.00	-0.45	0.28	0.11	14.49	10
Accuracy	0.33	0.21	0.17	0.15	0.35		

TF Prospector 753, sired by King Ranch 97/10, puts it all together, combining performance and phenotype. He exhibits 7 traits in the breed's top 15%, including Marbling in the top 2%, REA of 14.10 and %IMF of 4.16. Prospector is halter broke and currently being shown by Alderson/Richmond Marketing. Tinney Farms will retain 50% semen interest, 100% possession sells!



LOT

5

QV

QVF 2022 555F2

Quail Valley Farms

20182623 | 555F2 | 5/6/2018 | Bull

MR CVF 2022

1227182

MISS GRANDVIEW 555

20150499

WENDT GERONIMO 3983

BRIGGS 003/99

WENDT GERONIMO 3983

BRIGGS 003/99

WENDT 3277

WENDT 4909

BRIGGS 023/91

B.F. STOUT 502

WENDT 3277

WENDT 4909

BRIGGS 023/91

B.F. STOUT 502

Gain Test Data

ADG	3.90
IMF	4.31
REA	12.82
REA/cwt	1.06
SC Adj	31.1
Yrlg Wt	1210

	BW	WW	YW	Milk	T MAT	REA	Marb	FAT
EPDs	0.51	9.07	16.63	1.42	5.95	0.17	0.06	0.00
Accuracy	0.33	0.36	0.36	0.27	—	0.27	0.27	0.36

	HCW	Sh F	H Prq	Brd Bk	SC	\$G	Carc Idx
EPDs	10.84	-0.03	-0.36	-0.30	-0.76	15.27	10
Accuracy	0.28	0.22	0.15	0.13	0.37		

Selling full possession and 50% semen interest. QVF 2022 555F2 is truly a breed phenom. This mating was set due to the breed's production dominance of the legendary CVF 2022, owned by Briggs Ranches, and his modern-day full sister Miss Grandview 555. This is as tight as it gets. With that said, 555F2's individual performance has been stellar and he writes a very impressive 8 EPD traits in the Top 35%. We think 555F2 could be as consistent a breeding bull possibly the breed has ever seen. He is sure set up to be!



LOT

6

GF

GRANDVIEW 815

Grandview Farms

20175574 | 815 | 11/11/2017 | Bull

GRANDVIEW 209

20115991

RED HOT 4010

BRIGGS 003/99

MISS GRANDVIEW 864

MISS GRANDVIEW 165

20116100

MISS GRANDVIEW 803

MR RED W101

2S RANCH 831

BRIGGS 023/91

B.F. STOUT 502

RED HOT 4010

MISS GRANDVIEW 301

BRIGGS 021/5

CROSSBREED

Gain Test Data

ADG	4.19
IMF	4.00
REA	12.57
REA/cwt	1.14
SC Adj	28.6
Yrlg Wt	1093

	BW	WW	YW	Milk	T MAT	REA	Marb	FAT
EPDs	1.19	16.59	25.47	3.72	12.01	0.18	0.04	0.02
Accuracy	0.36	0.38	0.39	0.21	—	0.29	0.31	0.43

	HCW	Sh F	H Prq	Brd Bk	SC	\$G	Carc Idx
EPDs	17.14	0.01	-0.02	0.00	-0.47	24.46	10
Accuracy	0.29	0.21	0.11	0.10	0.35		

A Grandview 209 son. Very attractive bull with length, depth and good bone. Top 1% in WW, YW and HCW along with Top 2% REA and Top 4% in Marbling!

SANTA GERTRUDIS BULL OFFERING

LOT

7

G

GRAY OAKS 802

Gray Oaks Farm

20182232 | 802 | 2/19/2018 | Bull

Gain Test Data

ADG	4.65
IMF	3.71
REA	13.61
REA/cwt	1.11
SC Adj	42.3
Yrlg Wt	1141

RED DOC SANCHO ET 3318

20133647

RDF SANCHO 7-216

OLIVAREZ RANCHES 1/921

RDF LAURELES149/03

CB 1509

OLIVAREZ RANCHES 4/545

OLIVAREZ 93/454

KILGORE 44/6

CHEEKS 2/4/0

KILGORE 44/1

PEANUT 22/7

25 RANCH 5224

ROCKIN L RANCH 90

FEISTY 22/9

1282268

	BW	WW	YW	Milk	T MAT	REA	Marb	FAT
EPDs	1.31	15.80	24.93	-2.16	5.74	0.24	-0.01	0.01
Accuracy	0.35	0.38	0.37	0.20	—	0.27	0.29	0.41

	HCW	Sh F	H Prq	Brd Bk	SC	\$G	Carc Idx
EPDs	17.33	0.00	0.06	0.09	0.89	23.77	10
Accuracy	0.29	0.21	0.11	0.10	0.34		

An own son of RDF Sancho 3318, this bull exhibits the stoutness and performance needed to make an impact on your herd. 5 traits in the breed's Top 2%. This bull also has the phenotype to go with his performance traits.



LOT

8

H

TF 817

Tinney Farms

20181348 | 817 | 2/20/2018 | Bull

Gain Test Data

ADG	3.29
IMF	3.62
REA	12.27
REA/cwt	1.11
SC Adj	34.4
Yrlg Wt	1067

TF 1167

1297571

TF 794

KR 57/001

MR CVF 2022

TF 219

GREY ROCKS RANCH 93/059

RED ANGUS

MULTIPLE DAM

WENDT GERONIMO 3983

BRIGGS 003/99

KJ PHILLIP'S POCKET 3/1

BRIGGS 135/2

085/12

20120504

BRIGGS RANCH 068/7

	BW	WW	YW	Milk	T MAT	REA	Marb	FAT
EPDs	0.20	12.78	12.78	-0.30	6.09	0.19	-0.06	-0.01
Accuracy	0.36	0.39	0.39	0.21	—	0.29	0.30	0.42

	HCW	Sh F	H Prq	Brd Bk	SC	\$G	Carc Idx
EPDs	10.28	0.02	-0.46	-0.19	0.22	14.06	7
Accuracy	0.30	0.21	0.13	0.11	0.36		

Another TF 1167 son, his dam is a daughter of CVF 2022. He has very balanced traits with 5 in the breed's Top 10%. Retaining 25% semen interest.



LOT

9

Q

QVF HATCHET 912F4 ET

Quail Valley Farms

20181868 | 912F4 | 2/8/2018 | Bull

Gain Test Data

ADG	3.66
IMF	4.90
REA	10.78
REA/cwt	1.09
SC Adj	33.1
Yrlg Wt	960

HATCHET 150

1137949

BULL DOG 236

LUCY 157

BRIGGS 072/13

C-P MISS ROBERTO 912C7

20158157

SILVA 912/3

3/259

ET T36

M.C. HAMMER 860

HARKNESS 20

BRIGGS 580/0

BRIGGS 092/10

RDF SANCHO 7-216

SILVA 634/7

	BW	WW	YW	Milk	T MAT	REA	Marb	FAT
EPDs	0.68	9.85	15.18	0.14	5.07	0.02	0.05	0.00
Accuracy	0.29	0.26	0.30	0.18	—	0.23	0.24	0.31

	HCW	Sh F	H Prq	Brd Bk	SC	\$G	Carc Idx
EPDs	9.29	0.05	-0.29	-0.11	-0.15	14.57	10
Accuracy	0.18	0.02	0.02	0.01	0.27		

QVF Hatchet 912F4 was a product of lining up Tinney Farms' performance genetics, including the legendary show bull Hatchet 150 with Briggs Roberto 072/6 and QVF's donor dam Silva 912/3, who also sells in Saturday's female sale. Ranks Top 4% in 4 traits.

SANTA GERTRUDIS BULL OFFERING

LOT
10

GRANDVIEW 9141F2

Grandview Farms

20181385 | 9141F2 | 5/6/2018 | Bull

MAGNUM 357
1219825

COLT 45/7

MCTYRE 60/7

MISS GRANDVIEW 9141
1292141

RED HOT 4010

MISS GRANDVIEW 0114

KUDO 084/92
BENNETT 85/4
NINE BAR 12
MCTYRE FARMS 52/94
MR RED W101
25 RANCH 831
GRANDVIEW TREND 522
NINE BAR 040

Gain Test Data

ADG	4.40
IMF	3.81
REA	11.99
REA/cwt	1.09
SC Adj	35.0
Yrlg Wt	1176

	BW	WW	YW	Milk	T MAT	REA	Marb	FAT
EPDs	1.10	14.61	16.88	0.08	7.38	0.10	-0.02	0.01
Accuracy	0.32	0.33	0.32	0.21	—	0.22	0.23	0.33

	HCW	Sh F	H Prq	Brd Bk	SC	\$G	Carc Idx
EPDs	12.47	-0.01	0.04	0.09	0.08	17.66	9
Accuracy	0.26	0.21	0.10	0.10	0.24		

A Magnum 357 son out of a Red Hot 4010 and Mars 1/91-bred donor, making him a ¾ brother to Masterpiece 101. Top 5% in 5 EPD traits.



LOT

11

GRAY OAKS 829

Gray Oaks Farm

20182234 | 829 | 4/5/2018 | Bull

VIPER 400
20140758

TF 909

TF 708

ZEB 802

CB 419
20140096

CB 511

COPPERHEAD 214
LIBERTY RANCH 53/110
KUBECKA 47
TF 486

LIBERTY RANCH 63/11F
LIBERTY RANCH 53/324
CREEL XMAS CHUNK 810
HINNANT & FULBRIGHT 7/2

Gain Test Data

ADG	4.19
IMF	4.44
REA	11.61
REA/cwt	1.10
SC Adj	34.8
Yrlg Wt	1078

	BW	WW	YW	Milk	T MAT	REA	Marb	FAT
EPDs	1.31	6.90	14.76	-0.27	3.19	0.10	0.01	0.00
Accuracy	0.36	0.38	0.37	0.20	—	0.27	0.29	0.41

	HCW	Sh F	H Prq	Brd Bk	SC	\$G	Carc Idx
EPDs	10.37	-0.01	-0.04	-0.03	0.08	13.09	10
Accuracy	0.29	0.21	0.10	0.10	0.33		

This mating includes Viper 400 and his dam, CB 419, sells in tomorrow's sale. Check out his balanced EPDs – 5 traits in the breed's Top 20%. This bull is very eye appealing with the added performance needed in today's market.



LOT
12

TF 824

Tinney Farms

20181353 | 824 | 3/3/2018 | Bull

CIRCLE A MASTERPIECE
20141438

MAGNUM 357

MISS GRANDVIEW 21

OLD JOE 659/3

TF 467
20140382

TF 680

COLT 45/7
MCTYRE 60/7
RED HOT 4010
CIRCLE A ISADORA (ET) 96
WENDT 5321
BRIGGS 501/99
HF DESPERADO 501
SEVEN MILE RANCH 222/4

Gain Test Data

ADG	3.50
IMF	3.39
REA	13.05
REA/cwt	1.09
SC Adj	38.7
Yrlg Wt	1198

	BW	WW	YW	Milk	T MAT	REA	Marb	FAT
EPDs	0.06	3.08	4.09	0.05	1.59	-0.01	-0.04	0.00
Accuracy	0.37	0.36	0.35	0.19	—	0.25	0.27	0.38

	HCW	Sh F	H Prq	Brd Bk	SC	\$G	Carc Idx
EPDs	2.35	-0.03	0.12	-0.03	0.98	4.09	2
Accuracy	0.28	0.21	0.11	0.10	0.35		

One of our first sons of National Champion Masterpiece to sell. He's a big, stout bull with extreme length. His SC trait is in the breed's Top 1%. Retaining 25% semen interest.

SANTA GERTRUDIS BULL OFFERING



out-performed his contemporaries from day one, ratioing 125% for WW and 120% for YW. 82F3 records 7 traits in the Top 20% of which he ranks No. 1 for YW and No.3 for REA and WW in the entire Santa Gertrudis breed. 82F3's donor dam is a very exciting cow. She was the pick of Briggs Ranches and Harris Riverbend Farms Pick of Donors to Flush in the 2018 Houston Super Sale. QVF Copperhead 82F3 will change your entire herd's EPD profile and breed rankings in one generation. What is that worth?

LOT
13



QVF COPPERHEAD 82F3

Quail Valley Farms

20182041 | 82F3 | 3/16/2018 | Bull

COPPERHEAD 214
1232971

BIG ORANGE EXPRESS 42/7
TINNEY 923

HARRIS 82/4
20145298

FC PISTOL 28/0
CSC 7-7

5'S EXPECTATIONS (P) 103/3
KATY BETH 42/4
GREY ROCKS RANCH 93/039
LUCY 157

GUNSLINGER 13/5
HOLLY 20/3
SILVA 498/4
CSC COWGIRL 071/0

Gain Test Data	
ADG	3.60
IMF	4.03
REA	13.84
REA/cwt	1.15
SC Adj	38.4
Yrlg Wt	1228

	BW	WW	YW	Milk	T MAT	REA	Marb	FAT
EPDs	2.32	34.70	57.03	3.23	20.58	0.54	-0.02	0.01
Accuracy	0.30	0.32	0.30	0.14	—	0.20	0.22	0.31

	HCW	Sh F	H Prg	Brd Bk	SC	\$G	Carc Idx
EPDs	39.32	-0.02	-0.13	-0.05	1.01	53.80	10
Accuracy	0.19	0.04	0.00	0.00	0.26		

Selling full possession and 50% semen interest! QVF Copperhead 82F3 has



LOT
14



GRANDVIEW 7133

Grandview Farms

20176876 | 7133 | 5/25/2017 | Bull

GRANDVIEW 404
20135698

MARS 1/91
W H CREEL 438

MISS GRANDVIEW S379
20135512

SLEDGE 789
KCPG 102-6

C 3 RANCH 20
CHRISTMAS LADY 38/1
CREEL 20
R & R FARMS 7/550
BRIGGS 567/5
WENDT 0/1
WHAT A BULL W33
CKC 11 11/3

Gain Test Data	
ADG	
IMF	
REA	
REA/cwt	
SC Adj	
Yrlg Wt	

	BW	WW	YW	Milk	T MAT	REA	Marb	FAT
EPDs	1.96	10.65	11.24	-2.93	2.40	0.03	-0.05	-0.01
Accuracy	0.26	0.14	0.09	0.06	—	0.04	0.03	0.05

	HCW	Sh F	H Prg	Brd Bk	SC	\$G	Carc Idx
EPDs	10.17	-0.01	0.01	-0.16	0.00	12.13	3
Accuracy	0.07	0.00	0.00	0.00	0.04		

Sired by a Mars 1/91 son and a Sledge daughter. A very correct calf that's Top 20% in 5 traits.

LOT

15



GRAY OAKS 101

Gray Oaks Farm

20175107 | 101 | 8/23/2017 | Bull

FC PISTOL 28/0
1290034

GUNSLINGER 13/5
HOLLY 20/3

RED DOC RUBY 4105
20143060

KR 101/11
RED DOC 2203

WR MAVERICK N113 ET
FAYE 10/2
STONE COLD 21/1
COSSEY 13/9
KR 658/09
KR 1005/05 (ET) 4A
RDF 7-217
KR 408/5

Gain Test Data	
ADG	4.17
IMF	4.01
REA	13.81
REA/cwt	1.09
SC Adj	39.2
Yrlg Wt	1138

	BW	WW	YW	Milk	T MAT	REA	Marb	FAT
EPDs	2.28	28.60	43.71	5.41	19.71	0.33	-0.03	0.01
Accuracy	0.40	0.42	0.41	0.23	—	0.27	0.27	0.36

	HCW	Sh F	H Prg	Brd Bk	SC	\$G	Carc Idx
EPDs	30.92	0.00	-0.22	-0.05	1.11	42.04	10
Accuracy	0.31	0.21	0.11	0.10	0.38		

Another impressive ET mating FC Pistol and RDF Ruby. He exhibits 5 traits in the breed's Top 1%. Those numbers are hard to come by! If you need to add performance to your herd look no further.



SANTA GERTRUDIS BULL OFFERING



LOT 16 **HT** **TF 868**
Tinney Farms
 20182476 | 868 | 5/16/2018 | Bull

C-P ROBERTO 915C6(ET)
 20151424

TF 477
 20144254

BRIGGS 072/13
 SILVA 915/3

TF 909
 SMITH FARM 104

BRIGGS 580/0
 BRIGGS 092/10
 RDF SANCHE 7-216
 SILVA 634/7
 COPPERHEAD 214
 LIBERTY RANCH 53/110
 YELLOW PINES MONTEZUMA 21
 BIRDIE 712

		ADG	IMF	REA	REA/cwt	SC Adj	Yrlg Wt
Gain Test Data		4.29	3.44	13.32	1.23	32.5	1208

	BW	WW	YW	Milk	T MAT	REA	Marb	FAT
EPDs	0.77	24.04	47.18	3.17	15.19	0.47	-0.03	0.00
Accuracy	0.33	0.37	0.38	0.21	—	0.28	0.30	0.42

	HCW	Sh F	H Prg	Brd Bk	SC	\$G	Carc Idx
EPDs	30.66	-0.01	-0.32	-0.11	0.19	42.64	10
Accuracy	0.29	0.21	0.11	0.11	0.35		

A son of Roberto 915C6 and his dam is an own daughter of TF 909. He has 4 performance traits in the breed's Top 1%, including WW, YW, HCW and REA. Retaining 25% semen interest.



LOT 17 **Q** **QVF PISTOL 7F2**
Quail Valley Farms
 20182604 | 7F2 | 5/5/2018 | Bull

FC PISTOL 28/0
 1290034

HARRIS FARMS 7C
 20157912

GUNSLINGER 13/5
 HOLLY 20/3

HARCO T958 (ET)
 CSC 7-7

WR MAVERICK N113 ET
 FAYE 10/2
 STONE COLD 21/1
 COSSEY 13/9
 PCR AVALANCHE 95/5 (ET)
 MISS WINROCK M253
 SILVA 498/4
 CSC COWGIRL 071/0

		ADG	IMF	REA	REA/cwt	SC Adj	Yrlg Wt
Gain Test Data		1.88	4.56	11.05	1.06	31.1	1023

	BW	WW	YW	Milk	T MAT	REA	Marb	FAT
EPDs	2.02	21.45	25.08	6.99	17.72	0.10	0.01	0.00
Accuracy	0.34	0.41	0.41	0.25	—	0.31	0.32	0.43

	HCW	Sh F	H Prg	Brd Bk	SC	\$G	Carc Idx
EPDs	18.46	0.02	-0.19	-0.30	0.24	26.14	10
Accuracy	0.30	0.21	0.11	0.10	0.37		

is a partner donor with Harris Farms and Quail Valley Farms. He is a moderate made and structurally correct bull. He has 6 EPD traits in the breed's top 20% including Top 1% WW and HCW and Top 2% YW.

LOT 18 **G** **GRANDVIEW 9115F2 ET**
Grandview Farms
 20182508 | 9115F2 | 3/16/2018 | Bull

GRANDVIEW JOHN 316
 201201004853

MISS GRANDVIEW 9115
 20097364

RED HOT 4010
 HARCO T640 (ET)

TF 395
 MISS GRANDVIEW 1112

MR RED W101
 2S RANCH 831
 WENDT **ALL STAR 5876**
 2S RANCH 0120
 HATCHET 150
 SUGAR 97/006
 RED ANGUS
 MISS GRANDVIEW 696

		ADG	IMF	REA	REA/cwt	SC Adj	Yrlg Wt
Gain Test Data		3.13	3.21	10.73	1.09	36.1	977

	BW	WW	YW	Milk	T MAT	REA	Marb	FAT
EPDs	0.18	4.84	5.09	-1.54	0.89	-0.04	-0.07	0.00
Accuracy	0.36	0.37	0.36	0.21	—	0.26	0.28	0.39

	HCW	Sh F	H Prg	Brd Bk	SC	\$G	Carc Idx
EPDs	2.52	0.00	-0.09	0.15	0.12	5.50	1
Accuracy	0.28	0.21	0.10	0.10	0.34		

A John 316 son out of donor cow 9115. 5 traits in Top 30% of the breed. A complete young bull.



SANTA GERTRUDIS BULL OFFERING

LOT

19



GRAY OAKS 106

Gray Oaks Farm

20175106 | 106 | 3/29/2018 | Bull

FC PISTOL 28/0

1290034

RED DOC RUBY 4105

20143060

GUNSLINGER 13/5

HOLLY 20/3

KR 101/11

RED DOC 2203

WR MAVERICK N113 ET

FAYE 10/2

STONE COLD 21/1

COSSEY 13/9

KR 658/09

KR 1005/05 (ET) 4A

RDF 7-217

KR 408/5

Gain Test Data

ADG	4.11
IMF	2.97
REA	12.15
REA/cwt	1.07
SC Adj	37.4
Yrly Wt	1053

	BW	WW	YW	Milk	T MAT	REA	Marb	FAT
EPDs	2.54	29.31	42.43	5.01	19.66	0.30	-0.04	0.01
Accuracy	0.40	0.42	0.41	0.23	—	0.27	0.27	0.36

	HCW	Sh F	H Prq	Brd Bk	SC	\$G	Carc Idx
EPDs	30.22	-0.01	-0.12	0.11	1.07	41.43	10
Accuracy	0.31	0.21	0.11	0.10	0.38		

It's hard to part with one bull from this mating, let alone 2! FC Pistol x RDF Ruby! He exhibits 5 traits in the breed's Top 1%. Those numbers are hard to come by! Don't miss this rare opportunity to add these numbers to your herd.



Lot 19

LOT

20



TF 336F1

Tinney Farms

20180135 | 336F1 | 3/29/2018 | Bull

TF 921

1275672

MISS DOUBLE TT 336 336-9

1280646

TF 219

TINNEY FARM 514

NAF TOMAHAWK 414

MISS TT BANKER 222-9

HATCHET 150

BROOKS 345

OVERDRIVE 774

2M 99/0

NAF TOMMY 1T4

MISS DOUBLE TT 224

122

MISS DOUBLE TT 277

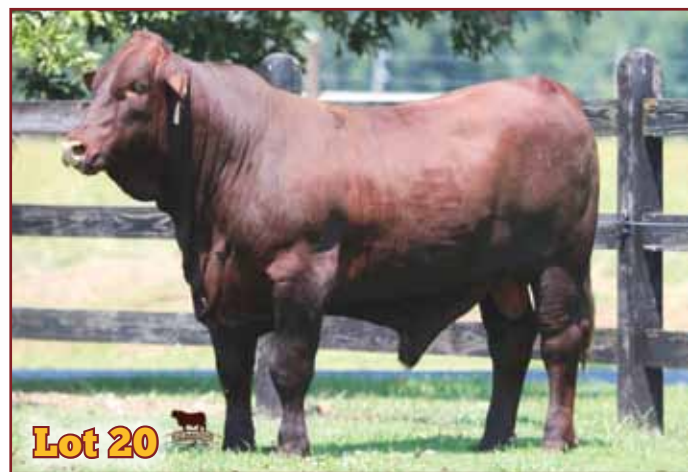
Gain Test Data

ADG	3.89
IMF	3.71
REA	11.26
REA/cwt	1.12
SC Adj	38.6
Yrly Wt	

	BW	WW	YW	Milk	T MAT	REA	Marb	FAT
EPDs	1.53	11.44	14.69	-0.58	5.14	0.13	-0.02	-0.01
Accuracy	0.37	0.35	0.33	0.23	—	0.23	0.24	0.34

	HCW	Sh F	H Prq	Brd Bk	SC	\$G	Carc Idx
EPDs	11.73	0.02	-0.25	0.03	0.40	14.86	9
Accuracy	0.27	0.21	0.10	0.10	0.34		

This is an ET mating of National Champion TF Hatchetman x Miss TT 336. Not only does this bull combine national champion phenotype, he has 6 traits in the breed's Top 10%.



Lot 20

LOT

21



QVF HATCHET 912F2

Quail Valley Farms

20180217 | 912F2 | 2/10/2018 | Bull

HATCHET 150

1137949

C-P MISS ROBERTO 912C7

20158157

BULL DOG 236

LUCY 157

BRIGGS 072/13

SILVA 912/3

3/259

ET T36

M.C. HAMMER 860

HARKNESS 20

BRIGGS 580/0

BRIGGS 092/10

RDF SANCHE 7-216

SILVA 634/7

Gain Test Data

ADG	2.48
IMF	4.16
REA	12.54
REA/cwt	1.13
SC Adj	33.2
Yrly Wt	1088

	BW	WW	YW	Milk	T MAT	REA	Marb	FAT
EPDs	0.90	16.06	24.81	0.28	8.31	0.16	0.00	0.00
Accuracy	0.37	0.40	0.40	0.27	—	0.32	0.33	0.43

	HCW	Sh F	H Prq	Brd Bk	SC	\$G	Carc Idx
EPDs	15.99	0.05	-0.28	-0.19	-0.22	23.79	10
Accuracy	0.30	0.22	0.12	0.11	0.37		

QVF Hatchet 912F2 was a product of lining up Tinney Farms' performance cattle, including the legendary show bull Hatchet 150 with Briggs Roberto 072/6 and QVF's donor dam Silva 912/3, who also sells in Saturday's female sale. Ranks Top 4% in 4 traits.

LOT

22



GRANDVIEW 9115E6 ET

Grandview Farms

20176879 | 9115E6 | 12/3/2017 | Bull

GRANDVIEW JOHN 316

201201004853

RED HOT 4010

HARCO T640 (ET)

MISS GRANDVIEW 9115

20097364

TF 395

MISS GRANDVIEW 1112

MR RED W101

25 RANCH 831

WENDT **ALL STAR 5876**

25 RANCH 0120

HATCHET 150

SUGAR 97/006

RED ANGUS

MISS GRANDVIEW 696

Gain Test Data

ADG	
IMF	
REA	
REA/cwt	
SC Adj	
Yrly Wt	

	BW	WW	YW	Milk	T MAT	REA	Marb	FAT
EPDs	0.38	5.70	5.95	-0.06	2.79	-0.04	-0.07	0.00
Accuracy	0.19	0.18	0.15	0.09	—	0.10	0.10	0.13

	HCW	Sh F	H Prq	Brd Bk	SC	\$G	Carc Idx
EPDs	3.88	0.00	-0.07	0.06	-0.02	6.44	1
Accuracy	0.09	0.00	0.00	0.00	0.10		

Another John 316 son out of donor cow 9115. He's square hipped and good fronted. Top 20% in 4 traits. Correctness bred in.

SANTA GERTRUDIS BULL OFFERING

LOT

23



GRAY OAKS 104

Gray Oaks Farm

20175109 | 104 | 9/17/2017 | Bull

RDF SANCHO'S NEVER BEFORE 1136

1292286

RDF SANCHO 7-216

CA3194

RED DOC RUBY 4105

20143060

KR 101/11

RED DOC 2203

RDF LAURELES 149/03

CB 1509

SYNERGY 0170

WILLIAMS 414/1 3194

KR 658/09

KR 1005/05 (ET) 4A

RDF 7-217

KR 408/5

Gain Test Data

ADG	3.72
IMF	2.74
REA	11.47
REA/cwt	1.09
SC Adj	34.9
Yrly Wt	1003

	BW	WW	YW	Milk	T MAT	REA	Marb	FAT
EPDs	0.88	17.04	24.96	4.90	13.42	0.27	-0.05	0.01
Accuracy	0.40	0.42	0.42	0.26	—	0.28	0.27	0.36

	HCW	Sh F	H Prg	Brd Bk	SC	\$G	Carc Idx
EPDs	17.86	0.00	0.02	0.05	0.66	24.29	9
Accuracy	0.31	0.21	0.11	0.11	0.37		

Hard to part with this type of bull. ET mating of RDF Sancho Never Before and our top donor, RDF Ruby. He exhibits 5 traits in the breed's Top 5%. This bull puts together the genotype and phenotype in a rare combination!



Lot 23

LOT

24



TF 858

Tinney Farms

20182472 | 858 | 4/18/2018 | Bull

PISTOLERO

20157885

FC PISTOL 28/0

HARCO 1247

WOMAN HOLLERIN D21

20163492

HARRIS FARMS 24/3

WOMAN HOLLERIN 3116

GUNSLINGER 13/5

HOLLY 20/3

HARCO T958 (ET)

HARCO T883 (ET)

QT CINNAMON BRAZOS 10/3

HARRIS FARMS (ET) T605

5-E 243 MAGNUM 243

HARDING 116/6

Gain Test Data

ADG	2.75
IMF	4.79
REA	9.10
REA/cwt	1.05
SC Adj	28.3
Yrly Wt	947

	BW	WW	YW	Milk	T MAT	REA	Marb	FAT
EPDs	1.28	17.73	24.12	8.37	17.24	0.18	0.03	0.01
Accuracy	0.35	0.38	0.39	0.20	—	0.28	0.30	0.42

	HCW	Sh F	H Prg	Brd Bk	SC	\$G	Carc Idx
EPDs	17.35	-0.01	-0.23	0.04	-0.24	23.97	10
Accuracy	0.29	0.21	0.10	0.10	0.36		

One of our first sons of Pistolero to sell. His numbers speak for themselves with 8 traits in the Top 15% and scanned IMF of 4.78. This young man will add performance to your herd.



Lot 24

LOT

25



QVF MASTERPIECE 514E

Quail Valley Farms

20174918 | 514E | 11/27/2017 | Bull

CIRCLE A MASTERPIECE

20141438

MAGNUM 357

MISS GRANDVIEW 21

TINNEY FARM 514

1266755

OVERDRIVE 774

2M 99/0

COLT 45/7

MCTYRE 60/7

RED HOT 4010

CIRCLE A ISADORA (ET) 96

RIVERBEND'S BRAZOS 013

BRIGGS 534/94

HATCHET 150

2M 50/70

Gain Test Data

ADG	3.55
IMF	3.85
REA	10.64
REA/cwt	1.05
SC Adj	37.2
Yrly Wt	1026

	BW	WW	YW	Milk	T MAT	REA	Marb	FAT
EPDs	1.06	7.99	7.80	1.57	5.57	0.01	-0.01	0.01
Accuracy	0.36	0.36	0.33	0.21	—	0.23	0.24	0.34

	HCW	Sh F	H Prg	Brd Bk	SC	\$G	Carc Idx
EPDs	6.46	0.01	-0.01	-0.13	0.93	8.66	7
Accuracy	0.27	0.21	0.10	0.10	0.34		

QVF Masterpiece 514E represents Tinney Farms' genetics completely. 514E is an own son of the national champion and senior herd sire at Tinney Farms, Masterpiece, and out of the Tinney Farms donor cow TF 514 that is also the dam of Hatchetman. 514E ranks 5 traits in the Top 35%.

LOT

26



GRANDVIEW 805

Grandview Farms

20175570 | 805 | 10/13/2017 | Bull

GRANDVIEW JOHN 316

201201004853

RED HOT 4010

HARCO T640 (ET) T640

MISS GRANDVIEW 1/8

20077168

TF 395

FRONTIER MAGNOLIA 701/7

MR RED W101

25 RANCH 831

WENDT **ALL STAR 5876**

25 RANCH 0120

HATCHET 150

SUGAR 97/006

FRONTIER DRIFTER 527/4

320

Gain Test Data

ADG	3.58
IMF	3.71
REA	9.74
REA/cwt	0.97
SC Adj	27.6
Yrly Wt	983

	BW	WW	YW	Milk	T MAT	REA	Marb	FAT
EPDs	0.69	7.39	8.90	2.77	6.46	-0.06	-0.06	-0.01
Accuracy	0.36	0.38	0.39	0.21	—	0.29	0.31	0.43

	HCW	Sh F	H Prg	Brd Bk	SC	\$G	Carc Idx
EPDs	5.34	-0.01	-0.16	-0.06	-0.38	9.18	1
Accuracy	0.29	0.21	0.10	0.10	0.35		

A John 316 son out of a Tonka 395 daughter. An extra stout bull with 6 traits in the Top 30% of the breed.

SANTA GERTRUDIS BULL OFFERING

LOT
27

GRAY OAKS 840

Gray Oaks Farm

20182236 | 858 | 10/13/2017 | Bull

VIPER 400
20140758

TF 909
TF 708

GRAY OAKS 325
20130631

POLLED CHIEF 1/4
L F BENEE 83

COPPERHEAD 214
LIBERTY RANCH 53/110
KUBECKA 47
TF 486
BIG CHIEF 909
BRIGGS 270/7
BEN TWO 6/20
J-D TRUDY 24/2 POLLED

Gain Test Data

ADG	3.23
IMF	4.31
REA	10.37
REA/cwt	1.26
SC Adj	31.3
Yrlg Wt	877

EPDs	BW	WW	YW	Milk	T MAT	REA	Marb	FAT
Accuracy	-0.11	-5.46	-0.75	2.39	-0.34	-0.12	0.01	0.01
	0.27	0.25	0.16	0.08	—	0.16	0.18	0.28

EPDs	HCW	Sh F	H Prq	Brd Bk	SC	\$G	Carc Idx
Accuracy	-2.49	0.03	-0.05	0.04	-0.62	-2.71	2
	0.13	0.01	0.00	0.00	0.21		

Another high-performing son of Viper 400, and his dam, GO 325, is an own daughter of Polled Chief.



LOT
28

TF 866

Tinney Farms

20182479 | 866 | 5/10/2018 | Bull

PISTOLERO
20157885

FC PISTOL 28/0
HARCO 1247

TF 631
20165774

GREY ROCKS RANCH 93/039
TF 393

GUNSlinger 13/5
HOLLY 20/3
HARCO T958 (ET)
HARCO T883 (ET)
MISS WINROCK 89/227
GREY ROCKS RANCH* 88/029
HATCHET 150
BRIGGS 102/95

Gain Test Data

ADG	3.66
IMF	4.11
REA	9.48
REA/cwt	1.10
SC Adj	32.2
Yrlg Wt	994

EPDs	BW	WW	YW	Milk	T MAT	REA	Marb	FAT
Accuracy	-0.20	9.50	14.29	-0.16	4.59	0.13	-0.03	0.01
	0.36	0.38	0.39	0.21	—	0.29	0.31	0.43

EPDs	HCW	Sh F	H Prq	Brd Bk	SC	\$G	Carc Idx
Accuracy	9.25	-0.02	0.06	0.00	0.05	13.80	8
	0.30	0.21	0.11	0.10	0.36		

A Pistolero son, he goes back to Hatchet and Grey Rocks genetics on his dam's side. Very balanced numbers with 5 traits in the breed's Top 10%.

LOT
29

QVF MASTERPIECE 514E1

Quail Valley Farms

20174916 | 514E1 | 12/1/2017 | Bull

CIRCLE A MASTERPIECE
20141438

MAGNUM 357
MISS GRANDVIEW 21

TINNEY FARM 514
1266755

OVERDRIVE 774
2M 99/0

COLT 45/7
MCTYRE 60/7
RED HOT 4010
CIRCLE A ISADORA (ET) 96
RIVERBEND'S BRAZOS 013
BRIGGS 534/94
HATCHET 150
2M 50/70

Gain Test Data

ADG	3.86
IMF	3.17
REA	10.36
REA/cwt	1.06
SC Adj	32.3
Yrlg Wt	1005

EPDs	BW	WW	YW	Milk	T MAT	REA	Marb	FAT
Accuracy	1.11	9.74	10.51	-0.67	4.21	0.02	0.00	0.01
	0.36	0.36	0.33	0.21	—	0.23	0.24	0.34

EPDs	HCW	Sh F	H Prq	Brd Bk	SC	\$G	Carc Idx
Accuracy	8.34	0.01	0.12	-0.02	0.72	11.25	8
	0.27	0.21	0.10	0.10	0.34		

QVF Masterpiece 514E1 represents Tinney Farms' genetics completely. 514E1 is an own son of the national champion and senior herd sire at Tinney Farms, Masterpiece, and out of the Tinney Farms donor cow TF 514 that is also the dam of Hatchetman. 514E1 ranks 6 traits in the Top 35%.

LOT
30

GRANDVIEW 855

Grandview Farms

20174916 | 514E1 | 1/13/2018 | Bull

GRANDVIEW 407
20135699

PUSHER 804
BRIGGS 003/99

MISS GRANDVIEW 155
20116089

HATCHET 150
SUGAR 97/006

PUSHER C9
MISS GRANDVIEW 203
BRIGGS 023/91
B.FSTOUT 502
BULL DOG 236
LUCY 157
GREY ROCKS RANCH* 89/180
GREY ROCKS RANCH* 92/041

Gain Test Data

ADG	3.30
IMF	3.18
REA	9.81
REA/cwt	1.12
SC Adj	33.1
Yrlg Wt	957

EPDs	BW	WW	YW	Milk	T MAT	REA	Marb	FAT
Accuracy	1.02	10.96	12.27	-1.09	4.39	0.11	-0.04	-0.01
	0.34	0.35	0.32	0.22	—	0.23	0.24	0.43

EPDs	HCW	Sh F	H Prq	Brd Bk	SC	\$G	Carc Idx
Accuracy	10.06	0.03	-0.04	-0.19	-0.11	12.97	8
	0.27	0.21	0.11	0.10	0.25		

A strong pedigreed bull, including Pusher 804, Briggs 023/91 and Hatchet. Attractive bull with 5 traits in the Top 10% of the breed.

LOT
31

GRAY OAKS 821

Gray Oaks Farm

20182245 | 821 | 3/27/2018 | Bull

RED DOC SANCHO ET 3318
20133647

RDF SANCHO 7-216
OLIVAREZ RANCHES 1/921

GRAY OAKS 410
20143221

POLLED RINGER
GRAY OAKS 953

RDF LAURELES 149/03
CB 1509
OLIVAREZ RANCHES 4/545
OLIVAREZ 93/454
SHAKER'S SIERRA 10/4
INDIAN PRINCESS 756
W H CREEK 344
GRAY OAKS 912

Gain Test Data

ADG	2.96
IMF	4.19
REA	9.91
REA/cwt	1.14
SC Adj	31.5
Yrlg Wt	902

EPDs	BW	WW	YW	Milk	T MAT	REA	Marb	FAT
Accuracy	1.01	3.73	-0.21	3.40	5.27	-0.05	-0.01	-0.01
	0.35	0.38	0.37	0.21	—	0.27	0.29	0.41

EPDs	HCW	Sh F	H Prq	Brd Bk	SC	\$G	Carc Idx
Accuracy	1.43	0.00	-0.01	0.08	-0.06	1.35	6
	0.29	0.21	0.11	0.10	0.34		

Another RDF Sancho 3318 son whose dam, GO 410, goes back to Shakers Sierra.

SANTA GERTRUDIS BULL OFFERING

LOT 32 **TF 877**
Tinney Farms
 20182480 | 877 | 6/8/2018 | Bull

PISTOLERO
 20157885

HARRIS 089D5
 20161924

FC PISTOL 28/0
 HARCO 1247
 777 411 Vegas
 HARCO T142/5 (ET)

GUNSLINGER 13/5
 HOLLY 20/3
 HARCO T958 (ET)
 HARCO T883 (ET)
 SJ HIGH ROLLER 005
 HARRIS FARMS 17/0
 SCC GRID MAKER 820
 HARRIS FARMS 089/1

Gain Test Data	
ADG	3.75
IMF	2.49
REA	9.73
REA/cwt	1.12
SC Adj	32.8
Yrly Wt	991

EPDs	BW	WW	YW	Milk	T MAT	REA	Marb	FAT
Accuracy	1.05	18.29	28.81	2.49	11.64	0.25	-0.03	0.02
	0.37	0.35	0.34	0.20	—	0.25	0.26	0.35

EPDs	HCW	Sh F	H Prg	Brd Bk	SC	\$G	Carc Idx
Accuracy	20.02	0.03	-0.02	-0.08	0.22	27.49	10
	0.27	0.21	0.11	0.10	0.28		

A Pistolero son, his 877 dam is a daughter of National Champion 777 Vegas. This young bull has 4 performance traits in the breed's Top 1%, including WW, YW, HCW and REA.

LOT 33 **QVF HATCHET 514E2**
Quail Valley Farms
 20174919 | 514E2 | 12/1/2017 | Bull

HATCHET 150
 1137949

TINNEY FARM 514
 1266755

BULL DOG 236
 LUCY 157
 OVERDRIVE 774
 2M 99/0

3/259
 ET T36
 M.C. HAMMER 860
 HARKNESS 20
 RIVERBEND'S BRAZOS 013
 BRIGGS 534/94
 HATCHET 150
 2M 50/70

Gain Test Data	
ADG	3.68
IMF	3.64
REA	9.68
REA/cwt	1.09
SC Adj	32.3
Yrly Wt	927

EPDs	BW	WW	YW	Milk	T MAT	REA	Marb	FAT
Accuracy	1.20	16.75	23.09	-1.49	6.89	0.19	-0.02	0.00
	0.38	0.37	0.36	0.27	—	0.28	0.28	0.37

EPDs	HCW	Sh F	H Prg	Brd Bk	SC	\$G	Carc Idx
Accuracy	16.26	0.05	-0.27	-0.20	0.14	22.86	10
	0.29	0.22	0.11	0.10	0.35		

QVF Hatchet 514E2's sire, Hatchet 150, is the base of Tinney Farms' genetics, the national champion Hatchet 150. QVF 514E2 is also a full brother to the famous Tinney Farms national champion bull Hatchetman. 514E2 ranks 4 traits in the Top 4%.

LOT 34 **GRANDVIEW 808**
Grandview Farms
 20175572 | 808 | 10/20/2017 | Bull

GRANDVIEW 407
 20135699

MISS GRANDVIEW 962 (ET)
 1292123

PUSHER 804
 BRIGGS 003/99
 PATRIOT 766/0
 HARRIS FARMS 700

PUSHER C9
 MISS GRANDVIEW 203
 BRIGGS 023/91
 B.FSTOUT 502
 POLLED CHEYENNE 850
 D&Y MISS PRISSEY 76/6
 RIVERBEND'S BRAZOS 013
 FIVE OAKS 83/3

Gain Test Data	
ADG	3.91
IMF	3.58
REA	13.06
REA/cwt	1.26
SC Adj	33.8
Yrly Wt	999

EPDs	BW	WW	YW	Milk	T MAT	REA	Marb	FAT
Accuracy	0.21	6.28	5.93	-0.83	2.31	0.13	-0.04	-0.01
	0.35	0.38	0.39	0.21	—	0.28	0.30	0.43

EPDs	HCW	Sh F	H Prg	Brd Bk	SC	\$G	Carc Idx
Accuracy	5.68	0.02	-0.02	-0.19	0.46	6.66	7
	0.29	0.21	0.11	0.10	0.34		

A Grandview 407 son out of a Patriot 766 and Brazos 013-bred dam. 5 traits in the Top 25%. 1.26/1.00 REA:CWT.



He is a Super American meaning 50% registered Brangus x 50% registered Santa Gertrudis. His Genomic-enhanced Salacoa Valley Brangus sire is one of QVF's herd sires on the farm, and his Santa Gertrudis Gray Oaks dam reflects some of the best genetics in the breed, including Hatchet 150. Purebred breeders can breed up with this superior bull, creating 3/4-bloods whose progeny all qualify as purebred or a commercial man can take this bull and appreciate all the profit benefits of hybrid vigor.

LOT 35 **TF 336F2**
Tinney Farms
 20180136 | 336F2 | 3/29/2018 | Bull

TF 921
 1275672

MISS DOUBLE TT 336-9
 1280646

TF 219
 TINNEY FARM 514
 NAF TOMAHAWK 414
 MISS TT BANKER 222-9

HATCHET 150
 BROOKS 345
 OVERDRIVE 774
 2M 99/0
 NAF TOMMY 1T4
 MISS DOUBLE TT 224
 122
 MISS DOUBLE TT 277

Gain Test Data	
ADG	4.37
IMF	3.77
REA	12.64
REA/cwt	1.25
SC Adj	30.6
Yrly Wt	

EPDs	BW	WW	YW	Milk	T MAT	REA	Marb	FAT
Accuracy	1.78	11.70	12.43	1.59	7.44	0.11	-0.02	-0.01
	0.37	0.35	0.33	0.23	—	0.23	0.24	0.34

EPDs	HCW	Sh F	H Prg	Brd Bk	SC	\$G	Carc Idx
Accuracy	10.88	0.01	0.10	-0.16	-0.19	13.38	9
	0.27	0.21	0.10	0.10	0.34		

Another bull from this ET mating of National Champion TF Hatchetman x Miss TT 336. He also has 6 traits in the breed's Top 10%.

LOT 36 **QVF 23C72 KENNESAW 448F2**
Quail Valley Farms
 20186885 | 448F2 | 5/25/2018 | Super Am Bull

SALACOA KENNESAW 23C72
 20159062

GRAY OAKS 448
 20144009

BRANGUS
 BRANGUS
 BRANGUS
 BRANGUS
 HATCHET 150
 CIRCLE A MAGGIE ET 110

BRANGUS
 BRANGUS
 BRANGUS
 BRANGUS
 BULL DOG 236
 LUCY 157
 MAGNUM 357
 MISS LEGACY 10

Gain Test Data	
ADG	3.57
IMF	5.15
REA	14.13
REA/cwt	1.24
SC Adj	34.8
Yrly Wt	1163

EPDs	BW	WW	YW	Milk	T MAT	REA	Marb	FAT
Accuracy	0.40	6.22	9.44	-2.36	0.75	0.07	-0.01	0.00
	0.06	0.07	0.06	0.06	—	0.04	0.04	0.04

EPDs	HCW	Sh F	H Prg	Brd Bk	SC	\$G	Carc Idx
Accuracy	6.63	0.01	0.08	0.02	0.26	9.10	8
	0.04	0.00	0.00	0.00	0.21		

QVF Super American 448F2 is a very exciting bull for commercial and purebred cattlemen. He is a Super American meaning 50% registered Brangus x 50% registered Santa Gertrudis. His Genomic-enhanced Salacoa Valley Brangus sire is one of QVF's herd sires on the farm, and his Santa Gertrudis Gray Oaks dam reflects some of the best genetics in the breed, including Hatchet 150. Purebred breeders can breed up with this superior bull, creating 3/4-bloods whose progeny all qualify as purebred or a commercial man can take this bull and appreciate all the profit benefits of hybrid vigor.

SANTA GERTRUDIS BULL OFFERING

LOT 37 **GRANDVIEW 772**
Grandview Farms
 20176877 | 772 | 3/12/2017 | Bull

BRIGGS 023/91
 1072167

1441
 20145424

BRIGGS 112
 GRAINGER 184/6
 HARCO T958 (ET)
 HARCO T848 (ET)

BRIGGS 651
 BRIGGS 512
 2/M8
 MULTIPLE DAM MD
 PCR AVALANCHE 95/5 (ET)
 MISS WINROCK M253
 CHAPS 372
 2S RANCH 4192

Gain Test Data							
ADG	IMF	REA	REA/cwt	SC Adj	Yrlg Wt		

	BW	WW	YW	Milk	T MAT	REA	Marb	FAT
EPDs	2.83	16.32	22.36	4.96	13.12	0.09	0.04	0.00
Accuracy	0.29	0.25	0.22	0.19	—	0.17	0.16	0.18

	HCW	Sh F	H Prg	Brd Bk	SC	\$G	Carc Idx
EPDs	17.49	-0.03	0.24	0.14	0.05	22.18	10
Accuracy	0.15	0.02	0.03	0.02	0.14		

Here's a big, stout bull sired by Briggs 023/91 and out of donor cow 1441. Outstanding built-in EPDs. Top 10% or higher in 6 traits.

LOT 38 **TF 064F2**
Tinney Farms
 20180134 | 064F2 | 3/29/2018 | Bull

HATCHET 150
 1137949

BRIGGS 064/11
 1295125

BULL DOG 236
 LUCY 157
 BRIGGS 035/6
 TF 829

3/259
 ET T36
 M.C. HAMMER 860
 HARKNESS 20
 BRIGGS 662/00
 WENDT 7183
 SOMBRERO 394
 PG CHARLIE BROWN 513-4

Gain Test Data							
ADG	IMF	REA	REA/cwt	SC Adj	Yrlg Wt		
3.38	2.86	9.32	1.17	29.6	839		

	BW	WW	YW	Milk	T MAT	REA	Marb	FAT
EPDs	1.22	22.04	26.87	-1.45	9.57	0.24	-0.04	0.00
Accuracy	0.38	0.37	0.35	0.27	—	0.24	0.27	0.36

	HCW	Sh F	H Prg	Brd Bk	SC	\$G	Carc Idx
EPDs	19.33	0.05	-0.23	0.12	-0.81	27.63	10
Accuracy	0.28	0.22	0.11	0.10	0.36		

An own son of Hatchet 150 and our Briggs 064/11 donor cow, this bull puts together 5 traits in the breed's Top 3%.

LOT 39 **QVF ADVANCE E101**
Quail Valley Farms
 20176918 | E101 | 11/22/2017 | STAR 5 Bull

DH ADVANCE 4205 ET
 20146772

ROCK HILL 550
 20155949

HEREFORD (HORNED)
 HEREFORD (HORNED)
 HEREFORD (HORNED)
 HEREFORD (HORNED)

ROCK HILL 406/11
 ROCK HILL 421/11

HEREFORD (HORNED)
 HEREFORD (HORNED)
 HEREFORD (HORNED)
 HEREFORD (HORNED)

X-FACTOR 308/7
 SOUTHERN BREEZ 275/4
 SCC 7B4
 ROCKHILL 331 331/8

Gain Test Data							
ADG	IMF	REA	REA/cwt	SC Adj	Yrlg Wt		
2.52	4.97	12.91	1.08	40.3	1111		

	BW	WW	YW	Milk	T MAT	REA	Marb	FAT
EPDs	0.63	-2.34	-1.99	0.40	-0.77	-0.04	0.03	0.00
Accuracy	0.20	0.09	0.05	0.03	—	0.01	0.01	0.01

	HCW	Sh F	H Prg	Brd Bk	SC	\$G	Carc Idx
EPDs	-0.43	0.00	0.03	0.00	0.21	-2.33	9
Accuracy	0.05	0.00	0.00	0.00	0.03		

E101 and E102 are both Star 5 Hereford x SG that are sired by superior horned Hereford bull from our friends and neighbors, the legendary performance Hereford cattleman Debter Herefords.



LOT 40 **GRANDVIEW 7119**
Grandview Farms
 20174630 | 7119 | 5/4/2017 | Bull

PUSHER 804
 1285076

MISS GRANDVIEW 120
 1291529

PUSHER C9
 MISS GRANDVIEW 203
 BRIGGS 021/5
 R. O. K.'S PINNACLE 501

SHAKER'S PLAYBOY 720
 GRANDVIEW CIERRA 433
 GRANDE 5/2
 MISS GRANDVIEW 554
 MR CVF 2022
 BRIGGS 040/1
 MARS 1/91
 R.O.K.'S EDDIE 45

Gain Test Data							
ADG	IMF	REA	REA/cwt	SC Adj	Yrlg Wt		

	BW	WW	YW	Milk	T MAT	REA	Marb	FAT
EPDs	0.41	10.00	9.30	2.50	7.50	0.05	0.00	0.00
Accuracy	0.29	0.25	0.15	0.14	—	0.08	0.07	0.09

	HCW	Sh F	H Prg	Brd Bk	SC	\$G	Carc Idx
EPDs	6.76	-0.01	0.03	-0.01	0.15	10.51	9
Accuracy	0.12	0.00	0.01	0.00	0.05		

Long, dark and balanced, he's a Pusher 804 son out of a CVF 2022 and Mars 1/91-bred dam. Top 20% or higher in 7 traits.

LOT 41 **TF 810**
Tinney Farms
 20181345 | 810 | 2/11/2018 | Bull

TF1167
 1297571

TF 4108
 20144451

TF 794
 KR 57/001
 HATCHET 150
 TF 407

TF 219
 GREY ROCKS RANCH 059 93/059
 RED ANGUS
 MULTIPLE DAM
 BULL DOG 236
 LUCY 157
 TINNEY FARMS 087
 TINNEY FARMS 048

Gain Test Data							
ADG	IMF	REA	REA/cwt	SC Adj	Yrlg Wt		
3.41	4.37	11.28	1.24	33.1	911		

	BW	WW	YW	Milk	T MAT	REA	Marb	FAT
EPDs	0.21	2.17	-5.53	1.60	2.69	0.02	-0.01	-0.01
Accuracy	0.37	0.38	0.39	0.20	—	0.28	0.30	0.42

	HCW	Sh F	H Prg	Brd Bk	SC	\$G	Carc Idx
EPDs	-0.93	0.01	0.02	0.22	-0.20	-3.00	4
Accuracy	0.29	0.21	0.11	0.10	0.33		

A TF 1167 son that goes back to Hatchet on the bottom side. Stout, young bull with an IMF of 4.39.

SANTA GERTRUDIS BULL OFFERING



LOT
42



E102

Quail Valley Farms

20176919 | E102 | 11/26/2017 | STAR 5 Bull

HEREFORD (HORNED)
DH ADVANCE 4205 ET
20146772

HEREFORD (HORNED)
HEREFORD (HORNED)
HEREFORD (HORNED)
HEREFORD (HORNED)

ROCK HILL 406 406/11

ROCK HILL 524
20155952

ROCKHILL 454

X-FACTOR 308/7
SOUTHERN BREEZ 275/4
SCC 7B4
ROCKHILL 258/9

Gain Test Data	
ADG	3.15
IMF	5.08
REA	11.77
REA/cwt	1.06
SC Adj	32.0
Yrlg Wt	1008

	BW	WW	YW	Milk	T MAT	REA	Marb	FAT
EPDs	0.80	-1.78	-0.27	-0.09	-0.97	-0.04	0.03	0.00
Accuracy	0.11	0.19	0.18	0.04	—	0.04	0.01	0.02

	HCW	Sh F	H Prg	Brd Bk	SC	\$G	Carc Idx
EPDs	0.70	0.00	0.03	0.00	0.00	-0.90	9
Accuracy	0.08	0.00	0.00	0.00	0.17		

E101 and E102 are both Star 5 Hereford x SG that are sired by superior horned Hereford bull from our friends and neighbors, the legendary performance Hereford cattlemen Debter Herefords.

LOT
43



GRANDVIEW 9141F1 ET

Grandview Farms

20185818 | 9141F1 | 3/16/2018 | Bull

MAGNUM 357
1219825

COLT 45/7

MCTYRE 60/7

MISS GRANDVIEW 9141
1292141

RED HOT 4010

MISS GRANDVIEW 0114

KUDO 084/92
BENNETT 85/4
NINE BAR 12
MCTYRE FARMS 52/94

MR RED W101
2S RANCH 831
GRANDVIEW TREND 522
NINE BAR 040

Gain Test Data	
ADG	4.00
IMF	3.14
REA	11.95
REA/cwt	1.07
SC Adj	34.1
Yrlg Wt	1122

	BW	WW	YW	Milk	T MAT	REA	Marb	FAT
EPDs	0.77	12.18	13.52	-0.50	5.60	0.05	-0.02	0.01
Accuracy	0.32	0.33	0.32	0.21	—	0.22	0.23	0.33

	HCW	Sh F	H Prg	Brd Bk	SC	\$G	Carc Idx
EPDs	9.52	-0.02	-0.01	0.13	0.06	14.34	8
Accuracy	0.26	0.21	0.10	0.10	0.31		

A Magnum 357 son out of a Red Hot 4010 daughter. Extremely long with good bone. Posts Top 10% or higher in 5 traits.

LOT
44



WRF JOEY

Tinney Farms

20180184 | LC 528 | 3/9/2018 | Bull

R S HAMILTON
20156056

TF 110 RED SOLO CUP

GRANDVIEW DAKOTA

JERNIGAN SR 707 (ET)

JERNIGAN 18/13
20130339

LAT 719/6

(O.U.) SUPER STAR 33/5
HARRIS FARMS T002/8 (ET)
RED HOT 4010
CCC JANUARY 1-9 1/9

BIG JOHN 73/6
4/M265
PAYDAY 0049
M&M 70-0

Gain Test Data	
ADG	3.42
IMF	3.77
REA	10.92
REA/cwt	1.08
SC Adj	38.9
Yrlg Wt	1016

	BW	WW	YW	Milk	T MAT	REA	Marb	FAT
EPDs	0.58	3.87	7.41	0.05	1.98	0.00	-0.03	0.00
Accuracy	0.32	0.30	0.29	0.19	—	0.19	0.20	0.30

	HCW	Sh F	H Prg	Brd Bk	SC	\$G	Carc Idx
EPDs	5.24	0.01	-0.17	-0.15	0.36	6.73	3
Accuracy	0.24	0.21	0.10	0.10	0.30		

This bull is out of a son of TF Red Solo Cup, and his dam includes Jernigan Ranch genetics.

LOT
45



GRANDVIEW 844F2 ET

Grandview Farms

20182516 | 844F2 | 3/14/2018 | Bull

GRANDVIEW JOHN 316
201201004853

RED HOT 4010

HARCO T640 (ET)

CA 844
201201004703

BRIGGS 065/4

CA 429

MR RED W101
2S RANCH 831
WENDT **ALL STAR 5876**
2S RANCH 0120

57
BRIGGS 012/98
SYNERGY 0170
CIA 265

Gain Test Data	
ADG	3.36
IMF	3.39
REA	11.38
REA/cwt	1.15
SC Adj	36.1
Yrlg Wt	987


	BW	WW	YW	Milk	T MAT	REA	Marb	FAT
EPDs	-0.46	6.24	9.62	6.93	10.05	0.00	-0.06	0.00
Accuracy	0.37	0.38	0.37	0.22	—	0.26	0.28	0.39

	HCW	Sh F	H Prg	Brd Bk	SC	\$G	Carc Idx
EPDs	4.30	-0.01	-0.26	0.11	-0.04	9.23	1
Accuracy	0.29	0.21	0.11	0.10	0.35		

A John 316 son out of donor cow CA 844. Dark red and attractive. Top 25% in the breed in 6 traits.



SANTA GERTRUDIS BULL OFFERING

LOT 46  **TF 829**
Tinney Farms
 20187728 | 829 | 3/26/2018 | STAR 5 Bull

HEREFORD (HORNED)
 HEREFORD (HORNED)
 HEREFORD (HORNED)
 HEREFORD (HORNED)

DH ADVANCE 2012Z ET
 20125932

TF 217
 TF 685

TF 214
 1297493


HATCHET 150
 TINNEY FARMS 456
 TF 219
 WENDT 8185

Gain Test Data							
ADG	3.93						
IMF	4.03						
REA	13.63						
REA/cwt	1.27						
SC Adj	38.5						
Yrlg Wt	1084						

	BW	WW	YW	Milk	T MAT	REA	Marb	FAT
EPDs	-1.03	-2.01	0.17	0.43	-0.58	0.02	0.02	0.00
Accuracy	0.25	0.10	0.07	0.04	—	0.03	0.03	0.05

	HCW	Sh F	H Prg	Brd Bk	SC	\$G	Carc Idx
EPDs	-1.72	0.01	0.01	0.05	0.72	-0.68	8
Accuracy	0.06	0.00	0.00	0.00	0.21		

Sired by Debter, a Hereford bull, and his dam is a Tinney Farms Santa Gertrudis female.

LOT 47  **GRANDVIEW 831**
Grandview Farms
 20175580 | 831 | 12/1/2017 | Bull

MARS 1/91
 W H CREEL 438

GRANDVIEW 404
 20135698

LEOPOLD 506 (ET)
 3D PAT 672


C 3 RANCH 20
 CHRISTMAS LADY 38/1
 CREEL 20
 R & R FARMS 7/550
 HATCHET 150
 SAVANNAH 6/6
 GRANDVIEW 9135 DOC
 MISS GRANDVIEW 674

Gain Test Data							
ADG	3.75						
IMF	3.56						
REA	10.44						
REA/cwt	1.05						
SC Adj	34.3						
Yrlg Wt	1015						

	BW	WW	YW	Milk	T MAT	REA	Marb	FAT
EPDs	0.95	11.92	14.03	-1.80	4.17	0.15	-0.04	-0.01
Accuracy	0.36	0.37	0.36	0.20	—	0.26	0.27	0.40

	HCW	Sh F	H Prg	Brd Bk	SC	\$G	Carc Idx
EPDs	11.04	0.02	-0.21	-0.18	0.30	14.59	9
Accuracy	0.28	0.21	0.10	0.10	0.34		

A Grandview 404 son out of a National Champions Hatchet and Savannah-bred dam. Posts EPDs in the Top 10% or higher in 5 traits.

LOT 48  **TF 872**
Tinney Farms
 20187731 | 872 | 5/21/2018 | STAR 5 Bull

FC PISTOL 28/0
 HARCO 1247

PISTOLERO
 20157885

DH ADVANCE 2012Z ET
 SANTA GERTRUDIS

TF 634
 20168713


GUNSlinger 13/5
 HOLLY 20/3
 HARCO T958 (ET)
 HARCO T883 (ET)
 HEREFORD (HORNED)
 HEREFORD (HORNED)
 SANTA GERTRUDIS
 SANTA GERTRUDIS

Gain Test Data							
ADG	3.41						
IMF	3.72						
REA	8.84						
REA/cwt	1.09						
SC Adj	32.7						
Yrlg Wt	940						

	BW	WW	YW	Milk	T MAT	REA	Marb	FAT
EPDs	-0.09	10.05	22.31	4.11	9.14	0.23	-0.02	0.02
Accuracy	0.20	0.13	0.12	0.04	—	0.08	0.08	0.10

	HCW	Sh F	H Prg	Brd Bk	SC	\$G	Carc Idx
EPDs	13.86	0.00	-0.04	0.03	-0.07	19.64	10
Accuracy	0.08	0.00	0.00	0.00	0.23		

3/4 Santa Gertrudis bull sired by Pistolero and out of a Red Mott SG x Hereford cow. Hybrid vigor at its best.

LOT 49  **GRANDVIEW 807**
Grandview Farms
 20175571 | 807 | 10/14/2017 | Bull

RED HOT 4010
 MISS GRANDVIEW 203

GRANDVIEW 040
 1293743

WENDT 6240
 PRUETT 806


MR RED W101
 2S RANCH 831
 GRANDE 5/2
 MISS GRANDVIEW 554
 DANDY 4881
 WENDT 6379
 MR.CVF 323
 PRUETT 516

Gain Test Data							
ADG	3.54						
IMF	3.08						
REA	10.48						
REA/cwt	1.13						
SC Adj	32.6						
Yrlg Wt	913						

	BW	WW	YW	Milk	T MAT	REA	Marb	FAT
EPDs	0.32	5.78	3.09	0.83	3.72	-0.06	-0.07	0.00
Accuracy	0.37	0.40	0.39	0.24	—	0.26	0.30	0.43

	HCW	Sh F	H Prg	Brd Bk	SC	\$G	Carc Idx
EPDs	1.59	-0.03	-0.08	-0.07	0.28	4.47	1
Accuracy	0.30	0.22	0.11	0.10	0.35		

Polled Red Hot 4010 and Wendt-bred bull. Dark and clean. Top 25% or higher in 5 traits.

LOT 50  **TF 831**
Tinney Farms
 20187729 | 831 | 3/30/2018 | STAR 5 Bull

HEREFORD (HORNED)
 HEREFORD (HORNED)
 HEREFORD (HORNED)
 HEREFORD (HORNED)

DH ADVANCE 2012Z ET
 20125932

SANTA GERTRUDIS
 CROSSBREED

TF 128
 20136115


SANTA GERTRUDIS
 SANTA GERTRUDIS
 CROSSBREED
 CROSSBREED

Gain Test Data							
ADG	4.00						
IMF	3.88						
REA	12.33						
REA/cwt	1.24						
SC Adj	37.62						
Yrlg Wt	1025						

	BW	WW	YW	Milk	T MAT	REA	Marb	FAT
EPDs	-1.09	-6.58	-5.22	0.65	-2.64	-0.02	0.00	0.00
Accuracy	0.07	0.04	0.02	0.00	—	0.02	0.02	0.03

	HCW	Sh F	H Prg	Brd Bk	SC	\$G	Carc Idx
EPDs	-5.19	0.01	0.07	0.07	0.74	-6.28	3
Accuracy	0.02	0.00	0.00	0.00	0.20		

Sired by Debter, a Hereford bull, and his dam is a Tinney Farms Santa Gertrudis female.

LOT 51  **TF 854**
Tinney Farms
 20187730 | 854 | 4/15/2018 | STAR 5 Bull

HEREFORD (HORNED)
 HEREFORD (HORNED)
 HEREFORD (HORNED)
 HEREFORD (HORNED)

DH ADVANCE 2012Z ET
 20125932

SANTA GERTRUDIS
 CROSSBREED

TF 1130
 20136116

SANTA GERTRUDIS
 SANTA GERTRUDIS
 CROSSBREED
 CROSSBREED

Gain Test Data							
ADG	4.95						
IMF	3.59						
REA	12.05						
REA/cwt	1.13						
SC Adj	38.2						
Yrlg Wt	1144						

	BW	WW	YW	Milk	T MAT	REA	Marb	FAT
EPDs	-1.09	-6.58	-5.22	0.65	-2.64	-0.02	0.00	0.00
Accuracy	0.07	0.04	0.02	0.00	—	0.02	0.02	0.03

	HCW	Sh F	H Prg	Brd Bk	SC	\$G	Carc Idx
EPDs	-5.19	0.01	0.07	0.07	0.84	-6.28	3
Accuracy	0.02	0.00	0.00	0.00	0.20		

Sired by Debter, a Hereford bull, and his dam is a Tinney Farms Santa Gertrudis female.

SANTA GERTRUDIS-INFLUENCED CROSSBRED FEMALE OFFERING



LOT
52-53



PEN OF 2

Tinney Farms

Santa Gertrudis X Hereford Red Mott | Pairs

IDs: 724 and 731. 1 bull calf, 1 heifer calf born spring 2019. Cows exposed back to Santa Gertrudis bull.

LOT
54-58



PEN OF 5

Quail Valley Farms

Red Mott | Bred Heifers

Sell bred to Santa Gertrudis bulls. Due to calve spring 2020.

LOT
59-62



PEN OF 4

Quail Valley Farms

Red Mott | Bred Heifers

Sell bred to Santa Gertrudis bulls. Due to calve spring 2020.

LOT
63-66



PEN OF 4

Tinney Farms

Santa Gertrudis x Hereford Red Mott | Bred Heifers

IDs: 841, 848, 853 and 857. Sell bred to Santa Gertrudis bull to calve spring 2020.

LOT
67-69



PEN OF 3

Gray Oaks Farm

Red Mott | Bred Heifers

Sell bred to Santa Gertrudis bulls. Due to calve spring 2020.

LOT
70-73



PEN OF 4

Quail Valley Farms

Red Angus x Santa Gertrudis | Bred Heifers

Sell bred to Santa Gertrudis bulls. Due to calve spring 2020.

LOT
74-77



PEN OF 4

Quail Valley Farms

Red Baldy | Bred Heifers

Sell bred to Santa Gertrudis bulls. Due to calve spring 2020.

LOT
78-81



PEN OF 4

Quail Valley Farms

Black Baldy | Bred Heifers

Sell bred to Santa Gertrudis bulls. Due to calve spring 2020.

LOT
82-85



PEN OF 4

Quail Valley Farms

Black Mott | Bred Heifers

Sell bred to Santa Gertrudis bulls. Due to calve spring 2020.



LOT
86-87



PEN OF 2

Tinney Farms

Red Mott x Angus Black Baldy | Bred Heifers

IDs: 840 and 842. Sell bred to Santa Gertrudis bull to calve spring 2020.

LOT
88-89



PEN OF 2

Gray Oaks Farm

Black/Black Baldy | Bred Heifers

Sell bred to Santa Gertrudis bulls. Due to calve spring 2020.

SANTA GERTRUDIS-INFLUENCED CROSSBRED FEMALE OFFERING



LOT
90-91



PEN OF 2

Quail Valley Farms
Red Baldy | Bred Heifers

Sell bred to Santa Gertrudis bulls. Due to calve spring 2020.

LOT
103-105



PEN OF 3

Quail Valley Farms
Red Crossbred | Open Heifers
Ready to breed. Born spring 2018.

LOT
92-93



PEN OF 2

Tinney Farms
Santa Gertrudis x Angus (Black) | Bred Heifers

IDs: 852 and 853. Sell bred to Santa Gertrudis bull to calve spring 2020.

LOT
106-107



PEN OF 2

Quail Valley Farms
Red Mott | Open Heifers
Ready to breed. Born spring 2018.

LOT
94-95



PEN OF 2

Quail Valley Farms
Red Crossbred | Bred Heifers

Sell bred to Santa Gertrudis bulls. Due to calve spring 2020.

LOT
108-109



PEN OF 2

Quail Valley Farms
Black Mott | Open Heifers
Ready to breed. Born spring 2018.

LOT
96-97



PEN OF 2

Quail Valley Farms
Black Crossbred | Bred Heifers

Sell bred to Santa Gertrudis bulls. Due to calve spring 2020.

LOT
108-109



PEN OF 2

Quail Valley Farms
Black Crossbred | Open Heifers
Ready to breed. Born spring 2018.

LOT
98-99



PEN OF 2

Quail Valley Farms
Red Mott | Open Heifers
Ready to breed. Born spring 2018.

LOT
100-102



PEN OF 3

Quail Valley Farms
Red Crossbred | Open Heifers
Ready to breed. Born spring 2018.



SYNDICATED SEMEN LIMITED PARTNERSHIP



LOT
110

QR KR 651/18 "THE CHOSEN ONE"

Quail Valley Farms and Partners

20183702 | 1541/17 | 11/3/2017 | Semen

KR1195/15
20157596

DSR CHERRY 923 1B
1280026

KR 545/12

KR 245/10 F1

DS PHOENIX 611

DEAN-HARRIS 022/4 (ET)

KR 252/08

KR 437/07 2B

BROWN 806 T7310

KR 127/08 5A

DIAMOND S RANGER 146

DS JENNIFER 318

DUBOIS' BULLSEYE 0522

NAVIDAD RANCH 408

	BW	WW	YW	Milk	T MAT	REA	Marb	FAT
EPDs	0.46	16.98	33.93	4.41	12.90	0.37	0.16	0.02
Accuracy	0.26	0.41	0.39	0.24	—	0.29	0.30	0.42

	HCW	Sh F	H Prg	Brd Bk	SC	\$G	Carc Idx
EPDs	23.37	-0.03	0.37	0.52	0.90	24.00	10
Accuracy	0.30	0.21	0.14	0.12	0.35		

Quail Valley Farms, Schuster Farms and Harris Riverbend Farms partnered on the King Ranch "Pick of the Bull Crop" in the 2019 Houston Super Sale. From there, the three operations traveled to Kingsville and were provided with a tremendous offering of over 200 performance- and genomic-tested young bulls to select from. The group was also provided with an unparalleled amount of data and statistical evaluation tools.

"The Pick" was made after intense scrutiny, with one bull continuously rising to the top on every sort and list – KR 651 "The Chosen One." This incredible young herd sire changes the playing field for the entire breed. His phenotypes are second to none, scanning a 1.24 REA/CWT and a 5.12 %IMF. Moderate framed, wide based, big boned, clean sheath, thick hide, breed character – all in "The Chosen One" package.

His genomic-enhanced EPD (GEPD) profile is truly unmatched to any other living Santa Gertrudis. The Chosen One 651 has an unbelievable 10 GEPDs in the Top 10%, 9 in the Top 5% and 8 in the Top 2%.

THE OFFER

"The Chosen One" 651 owners are offering a semen package on this great bull. 20 units of semen.
THE PURCHASE PRICE WILL BE A 20X MONEY BID.

Terms & Conditions:

2020 – The buyer has the option to purchase the same package of 20 units for 1/2 of the original bid.

2021 – The buyer has the option to purchase the same package of 20 units for 1/3 of the original bid.

The buyer will be able to participate in any scheduled features or events in marketing "The Chosen One's" 651 progeny.

AI CERTIFICATES

A.I. Certificates will be provided FREE OF CHARGE to the syndicate semen owner or owners for registration certificates ONLY after a DNA sample has been sent to SGBI to confirm parentage of the specific calf. This semen may be used in all applications of A.I. and E.T.

Special Notice:

If an AI certificate is requested by a non-syndicate owner from the use of the purchased semen in this syndicate offering, then there will be a \$1,500 SGBI AI certificate per calf registration fee.

QUAIL VALLEY FARMS FEMALE OFFERING



LOT
111



HEIFER PICK OF 2019 CALF CROP

Quail Valley Farms

Next pick heifer out of 2019 calf crop. In Houston, Quail Valley sold first pick of their calves born spring of 2019. Quail Valley is now offering either the second pick of their spring heifer crop or first pick out of their fall heifer crop. Pick must be made by January 1, 2020.



Lot 112

LOT
112



QVF MS PISTOLERO 117F

Quail Valley Farms

20185626 | 117F | 6/21/2018 | Open Heifer

PISTOLERO
20157885

FC PISTOL 28/0

HARCO 1247

FC PISTOL 28/0

HARCO 1249

GUNSLINGER 13/5
HOLLY 20/3
HARCO T958 (ET)
HARCO T883 (ET)
GUNSLINGER 13/5
HOLLY 20/3
HARCO T958 (ET)
HARCO T505 (ET)

HARRIS 117C
20157880

	BW	WW	YW	Milk	T MAT	REA	Marb	FAT
EPDs	1.81	26.54	45.46	3.85	17.12	0.37	-0.02	0.03
Accuracy	0.35	0.34	0.33	0.20	—	0.24	0.25	0.35

	HCW	Sh F	H Prq	Brd Bk	SC	\$G	Carc Idx
EPDs	30.88	0.01	-0.26	-0.22	0.50	42.44	10
Accuracy	0.27	0.21	0.11	0.10	0.28		

QVF MS Pistolero 117F (Reg.# 20185626) is the one everyone points to when they drive in the pasture. She has a June birth date so she was purposely left open to breed this fall. She is a very exciting breeding piece being she is line bred Pistol 28/0 and is one of the first Pistolero 64/5 offspring to be offered for auction. She has 6 EPD traits in the Top 15% with a trait-leading .37 REA. She scanned a 1.2 REA/CWT with a 4.36 %IMF. QVF IS RETAINING 1 FLUSH OR 6 EMBRYOS. QVF WILL ASSUME ALL COSTS. OPEN.

QUAIL VALLEY FARMS FEMALE OFFERING

LOT
113



SILVA 912/3

Quail Valley Farms

20133914 | 912/3 | 6/27/2013 | Donor; Pair w/ Heifer Calf

RDF SANCHO 7-216
1269953

RDF LAURELES 149/03

CB 1509

LR CODE RED 45/353

SILVA 634/7
1278955

SILVA 2X257/1

MULTIPLE SIRE

KR 5/812

MOUNTAIN GRIZZLY 7316

CB 7347

YOGI 1562

CB 2353

OLIVAREZ RANCHES 9/836

SILVA 1X257/9

	BW	WW	YW	Milk	T MAT	REA	Marb	FAT
EPDs	1.60	14.17	21.29	3.55	10.64	0.14	0.14	0.00
Accuracy	0.40	0.40	0.38	0.36	—	0.29	0.30	0.40

	HCW	Sh F	H Prg	Brd Bk	SC	\$G	Carc Idx
EPDs	15.57	-0.01	0.06	-0.31	0.43	20.57	10
Accuracy	0.31	0.23	0.12	0.11	0.28		



Lot 113

Silva 912/3 (Reg.# 20133914) has been a very productive donor for us. She is one of the great sisters out of Silva 634/7, owned by Strait Ranches and by multi-trait leader RDF Sancho. She posts 8 traits in the Top 35%, including a tremendous Top 1% Marbling EPD. If you are needing breed-recognized genetics, then you need to consider owning this young exciting young donor. Palpated safe 2 mos., 7/18/19. Pasture exposed to Harris Farms 253D3 "Capone" (Reg.# 20167545), Pistolero 64/5 (Reg.# 20157885) and KR 143/17 (Reg.# 20172997) from 5/9/19 to 7/9/19.

Heifer Calf QVF 912G3 (Reg.# 20190524) is sired by our trait-leading AI sire Pistolero 64/5 and truly represents "turning generations." This mating combines the highest in REA genetics in the breed with the highest in Marbling, giving you a blended GEPR of Top 3% Marbling and Top 1% REA. QVF 912G3 posts 8 traits in the Top 15%, which really signifies what the QVF "progress in genetics" program is all about considering her dam posts 8 traits in the Top 35%.



Lot 114

LOT
114



C-P MS ROBERTO 915C11

Quail Valley Farms

20152566 | 915C11 | 11/10/2015 | Bred Cow Donor

BRIGGS 072/13
20132309

BRIGGS 580/0

BRIGGS 092/10

SILVA 915/3
20133917

RDF SANCHO 7-216

SILVA 634/7

BRIGGS 555/4

CORPORON ACRES 4/1

BRIGGS 039/5

BRIGGS 073/4

RDF LAURELES 149/03

CB 1509

LR CODE RED 45/353

SILVA 2X257/1

	BW	WW	YW	Milk	T MAT	REA	Marb	FAT
EPDs	0.65	13.62	31.36	0.04	6.85	0.19	0.03	0.00
Accuracy	0.33	0.38	0.37	0.25	—	0.29	0.30	0.39

	HCW	Sh F	H Prg	Brd Bk	SC	\$G	Carc Idx
EPDs	18.36	0.01	-0.11	-0.17	0.46	27.40	10
Accuracy	0.29	0.23	0.15	0.13	0.31		

MS Roberto 915C11 (Reg.# 20152566) is 1 of 43 progeny produced from the breed-changing donor dam, Silva 915/3. Her sons and daughters reside today in 18 different progressive Santa Gertrudis operations, including MC Ranch, Woman Hollerin' Ranch, C-C Ranch, Wunderlich Farms, Tinney Farms, Grandview Farms, Mackey Cattle Company, Pitchford Cattle Company, San Jose Ranch, Stroman Cattle Company, Strait Ranches, Vesper Ranch and Quail Valley Farms. 915C11 is sired by AI sire Briggs Roberto 072/13. This mating was one that produced high-selling and award-winning progeny across the nation. 915C11 posts 6 traits in the Top 10%. Here is a donor cow! Palpated safe 2 mos., 7/18/19. Pasture exposed to Harris Farms 253D3 "Capone" (Reg.# 20167545), Pistolero 64/5 (Reg.# 20157885) and KR 143/17 (Reg.# 20172997) from 5/9/19 to 7/9/18.

QUAIL VALLEY FARMS FEMALE OFFERING

LOT
115



HARRIS 80/4

Quail Valley Farms

20145296 | 80/4 | 12/17/2014 | Pair w/ Bull Calf

FC PISTOL 28/0
1290034

GUNSLINGER 13/5

WR MAVERICK N113 ET
FAYE 10/2

HOLLY 20/3

STONE COLD 21/1
COSSEY 13/9

SCC GRID MAKER 820

FIVE OAKS 82/5
FIVE OAKS 121/5

HARRIS FARMS T003/6 (ET)

1254841

BROAD BAY FARM 724

Q.H.F.SHORTBREAD 134
CREEL 315

	BW	WW	YW	Milk	T MAT	REA	Marb	FAT
EPDs	1.59	16.04	23.96	1.75	9.77	0.10	-0.02	0.01
Accuracy	0.40	0.43	0.41	0.32	—	0.31	0.32	0.42

	HCW	Sh F	H Prg	Brd Bk	SC	SG	Carc Idx
EPDs	16.98	0.06	-0.30	-0.12	0.56	23.19	9
Accuracy	0.32	0.23	0.12	0.11	0.37		



Harris 80/4 (Reg.# 20145296) has been a very good donor for us. We think she is one of the best daughters of Pistol 28/0 that we have seen. That is saying a lot knowing the history of Pistol sons and daughters that have generated over \$200,000 in sales for Harris Riverbend Farms. She has a very productive life ahead and will make the buyer a great donor to turn generations. She posts an impressive 6 traits in the Top 30%. We have worked 80/4 in invitro collection 5 times and have averaged 17 embryos per collection. Pasture exposed to Harris Farms 253D3 "Capone" (Reg.# 20167545) and Pistolero 64/5 (Reg.# 20157885) from 5/9/19 to 7/9/19. Pasture exposed to KR 1541/17 (Reg.# 20175755), Quail Valley Redemption 60E1 ET (Reg.# 20175267) and KR 395/18 (Reg.# 20183520) from 7/10/19 to sale date.

Bull Calf QVF Capone 80G (Reg.# 20190520) is a linebred Pistol 28/0. We think he has potential to make a herd sire. He has 6 traits in the Top 15%. His sire, Harris Capone 253D3, was the high-selling \$20,000 bull in the 2017 Super American Bull Sale at Briggs Ranches. Capone's dam, Harco 1220, is one of the premier donors in the breed today.



Many of our bred females are exposed to KR 1541/17 (Reg.# 20175755)

QUAIL VALLEY FARMS FEMALE OFFERING

Selling one female – your pick of one of these three maternal sisters.

LOT
116A



QUAIL VALLEY 60E3 ET

Quail Valley Farms

20175264 | 60E3 | 11/27/2017 | Bred Heifer Pick

CIRCLE A MASTERPIECE

20141438

MAGNUM 357

MISS GRANDVIEW 21

COLT 45/7

MCTYRE 60/7

RED HOT 40/10

CIRCLE A ISADORA (ET) 96

LJV MASON 0/72

SR 710

LJV DOLLY 8/48

LR CODE RED 45/353

BRIGGS 553

SR 60/3

20130823

SR 10.0 10/0

	BW	WW	YW	Milk	T MAT	REA	Marb	FAT
EPDs	0.46	10.11	14.31	-0.24	4.82	0.10	-0.01	0.01
Accuracy	0.33	0.38	0.37	0.21	—	0.27	0.28	0.40

	HCW	Sh F	H Prg	Brd Bk	SC	\$G	Carc Idx
EPDs	9.72	-0.01	0.00	-0.03	0.57	14.06	9
Accuracy	0.29	0.21	0.11	0.10	0.27		

QVF MS 60E3 (Reg.# 20175264) is sired by the tremendous Tinney Farms Show Champion Masterpiece and out of MS Yancey SR 60/3. These maternal sisters are at the heart of what we are working on with our Santa Gertrudis herd. We do not plan on selling many of these MS Yancey daughters anytime soon again. Here is your chance. 60E3 posts 3 EPD traits in the Top 15% and 60F5 posts 7 EPD traits in the Top 20% and scanned 1.0 REA/CWT with a 4.1 %IMF. QVF IS RETAINING 1 FLUSH OR 6 EMBRYOS. QVF WILL ASSUME ALL COSTS. Palpated safe 45 days, 7/18/19. Pasture exposed to KR 1541/17 (Reg.# 20175755), Quail Valley Redemption 60E1 ET (Reg.# 20175267) and KR 395/18 (Reg.# 20183520) from 5/10/19 to sale date.

LOT
116B



QUAIL VALLEY 60F1 ET

Quail Valley Farms

20180377 | 60F1 | 1/29/2018 | Bred Heifer Pick

COPPERHEAD 214

1232971

BIG ORANGE EXPRESS 42/7

TINNEY 923

LJV MASON 0/72

SR 10.0 10/0

5'S EXPECTATIONS (P) 103/3

KATY BETH 42/4

GREY ROCKS RANCH 93/039

LUCY 157

SR 710

LJV DOLLY 8/48

LR CODE RED 45/353

BRIGGS 553

SR 60/3

20130823

	BW	WW	YW	Milk	T MAT	REA	Marb	FAT
EPDs	0.86	17.46	27.23	3.99	12.72	0.26	-0.03	0.01
Accuracy	0.38	0.40	0.38	0.24	—	0.27	0.29	0.40

	HCW	Sh F	H Prg	Brd Bk	SC	\$G	Carc Idx
EPDs	18.53	-0.01	-0.06	0.01	0.64	26.04	10
Accuracy	0.30	0.23	0.11	0.10	0.27		

MATERNAL SISTERS QVF MS 60F1 and QVF 60F5 are sired by the tremendous Tinney Farms Masterpiece and out of MS Yancey SR 60/3. These maternal sisters are at the heart of what we are working on with our Santa Gertrudis herd. We do not plan on selling many of these MS Yancey daughters anytime soon again. Here is your chance. 60E3 posts 3 EPD traits in the Top 15%, and 60F5 posts 7 EPD traits in the Top 20%. Both scanned 1.0 REA/CWT with a 4.1 %IMF. QVF IS RETAINING 1 FLUSH OR 6 EMBRYOS. QVF WILL ASSUME ALL COSTS. Palpated safe 45 days, 7/18/19. Pasture exposed to KR 1541/17 (Reg.# 20175755), Quail Valley Redemption 60E1 ET (Reg.# 20175267) and KR 395/18 (Reg.# 20183520) from 5/10/19 to sale date.

LOT
116C



QUAIL VALLEY 60F5 ET

Quail Valley Farms

20180374 | 60F5 | 2/5/2018 | Bred Heifer Pick

COPPERHEAD 214

1232971

BIG ORANGE EXPRESS 42/7

TINNEY 923

LJV MASON 0/72

SR 10.0 10/0

5'S EXPECTATIONS (P) 103/3

KATY BETH 42/4

GREY ROCKS RANCH 93/039

LUCY 157

SR 710

LJV DOLLY 8/48

LR CODE RED 45/353

BRIGGS 553

	BW	WW	YW	Milk	T MAT	REA	Marb	FAT
EPDs	1.81	20.45	28.94	3.38	13.60	0.24	0.00	0.00
Accuracy	0.38	0.40	0.38	0.24	—	0.27	0.29	0.40

	HCW	Sh F	H Prg	Brd Bk	SC	\$G	Carc Idx
EPDs	21.34	-0.02	-0.01	-0.02	0.50	28.44	10
Accuracy	0.30	0.23	0.11	0.10	0.27		

MATERNAL SISTERS QVF MS 60F1 and QVF 60F5 are sired by the tremendous Tinney Farms Masterpiece and out of MS Yancey SR 60/3. These maternal sisters are at the heart of what we are working on with our Santa Gertrudis herd. We do not plan on selling many of these MS Yancey daughters anytime soon again. Here is your chance. 60E3 posts 3 EPD traits in the Top 15%, and 60F5 posts 7 EPD traits in the Top 20%. Both scanned 1.0 REA/CWT with a 4.1 %IMF. QVF IS RETAINING 1 FLUSH OR 6 EMBRYOS. QVF WILL ASSUME ALL COSTS. Palpated safe 45 days, 7/18/19. Pasture exposed to KR 1541/17 (Reg.# 20175755), Quail Valley Redemption 60E1 ET (Reg.# 20175267) and KR 395/18 (Reg.# 20183520) from 5/10/19 to sale date.



QUAIL VALLEY FARMS FEMALE OFFERING



Dam of Lots 116A, 116B & 116C and Lot 117.



Quail Valley Redemption 60E1 ET (Reg.# 20175267) is a full sibling to Lots 116A and a half-brother to Lots 116B, 116C and 117.

LOT
117

QVF REAL DEAL 60E

Quail Valley Farms

20176417 | 60E | 10/14/2017 | Bred Heifer

CIRCLE A REAL DEAL

201201001225

MR. DOUBLE TT ERVIN 109/8

TIDWELL 250

LJV MASON 0/72

SR 10.0 10/0

MR DOUBLE TT GUS 112

MISS DOUBLE TT 251

WR LITTLE ROCK G139

CLASSY'S BEE 755

SR 710

LJV DOLLY 8/48

LR CODE RED 45/353

BRIGGS 553

	BW	WW	YW	Milk	T MAT	REA	Marb	FAT
EPDs	1.44	12.32	15.03	-0.10	6.06	0.05	0.00	0.01
Accuracy	0.32	0.34	0.32	0.21	—	0.22	0.23	0.33

	HCW	Sh F	H Prg	Brd Bk	SC	\$G	Carc Idx
EPDs	11.39	-0.02	0.09	-0.02	0.29	15.45	9
Accuracy	0.26	0.21	0.11	0.10	0.25		

QVF Real Deal 60E (Reg.# 20176417) is an own daughter of the National Champion Female Miss Yancey 60/3 that is currently owned by Vesper Ranches. 60E posts 6 EPD traits in the Top 15%. This mating was made to win purple banners for sure. If you want to raise show cattle, then you need to consider this female. We have 10 Miss Yancey daughters and we don't plan to let many leave here anytime soon. Palpated safe 5 mos., 7/18/19. Pasture exposed to Pistolero 64/5 (Reg.# 20157885) from 10/15/18 to 5/9/19.

LOT
118

QVF MS 2022 514F2

Quail Valley Farms

20180218 | 514F2 | 1/3/2018 | Bred Heifer

MR CVF 2022

1227182

WENDT GERONIMO 3983

BRIGGS 003/99

OVERDRIVE 774

2M 99/0

WENDT 3277

WENDT 4909

BRIGGS 023/91

B.F.STOUT 502

RIVERBEND'S BRAZOS 013

BRIGGS 534/94

HATCHET 150

2M 50/70

	BW	WW	YW	Milk	T MAT	REA	Marb	FAT
EPDs	1.29	11.13	14.96	2.76	8.33	0.09	0.08	0.00
Accuracy	0.38	0.37	0.36	0.28	—	0.27	0.27	0.36

	HCW	Sh F	H Prg	Brd Bk	SC	\$G	Carc Idx
EPDs	10.45	0.01	-0.16	-0.32	-0.12	14.92	10
Accuracy	0.29	0.22	0.15	0.13	0.30		



QVF MS 2022 514F2 (Reg.# 20180218) is why we are in the Santa Gertrudis business! We are striving to use the best of the best to produce a product that others will find to work for them as an investment to improve their program and the breed itself. We humbly believe QVF MS 2022 514F2 is one of the best modern-day Santa Gertrudis females to be offered for public auction. She stacks proven genomics with phenotypes like no other. Everyone who has seen her claims she is as close to phenotypic perfection as one could be made. On top of that she scanned a monster 11+ in. REA and a whopping 5+ %IMF with only .2 BF. Her sire, CVF 2022, is one of the most prolific female-producing sires in breed history. There have been and are over 25 ET donors sired by this legendary sire. 514F2's dam, TF 514, is also the dam of National Champion Hatchetman and TF Dream Girl. 514F2's EPDs rank her in the Top 2% for Marbling and 15% for REA, along with Top 10% for WW and YW. The calf she is carrying from one of these exciting sires should be breed-leading genetics! QVF IS RETAINING 1 FLUSH OR 6 EMBRYOS. QVF WILL ASSUME ALL COSTS. Palpated safe 2 mos., 7/18/19. Pasture exposed to KR 1541/17 (Reg.# 20175755), Quail Valley Redemption 60E1 ET (Reg.# 20175267) and KR 395/18 (Reg.# 20183520) from 5/10/19 to sale date.

QUAIL VALLEY FARMS FEMALE OFFERING

LOT

119



QVF MS MASON 901F2

Quail Valley Farms

20182615 | 901F2 | 5/5/2018 | Bred Heifer

LJV MASON 0/72

1290709

SR 710

LJV DOLLY 8/48

W H CREEL 344

GRAY OAKS 901

1278172

TF 575

WR CHALLENGER L230

RBC MISS PARTNER 390

LJV VAQUERO 4/22

SR 549

CREEL 20

W H CREEL 894

HATCHET 150

WENDT 7739



Lot 119

	BW	WW	YW	Milk	T MAT	REA	Marb	FAT
EPDs	1.56	15.76	26.79	-2.75	5.14	0.30	0.00	0.01
Accuracy	0.32	0.38	0.38	0.24	—	0.28	0.29	0.40

	HCW	Sh F	H Prq	Brd Bk	SC	\$G	Carc Idx
EPDs	19.50	0.02	-0.21	0.01	0.45	25.06	10
Accuracy	0.30	0.21	0.10	0.10	0.27		

QVF MS Mason 901F2 (Reg.# 20182615) is truly one that most can't believe we are offering. She is the result of a flush we purchased in the Houston Super Sale from 777 Farms out of the Gray Oaks 901 donor who was the 2018 SGBI Dam of the Year and the dam to the 2017 National Champion Female Ariana. We chose to collect her to Strait Ranches' curve-bending sire Mason 072, and 901F2 is the result of our efforts and investment. We truly feel this heifer should shake the rafters when the gavel cracks due to her breeding potential. She is truly the best of the best. She posts 5 EPD traits in the Top 10% including an outlier with a Top 1% REA EPD of .30. Maybe that is why she scanned a huge 12.47-in. REA and a 4.97 %IMF. QVF IS RETAINING 1 FLUSH OR 6 EMBRYOS. QVF WILL ASSUME ALL COSTS. Breeding information at sale time. Pasture exposed to KR 1541/17 (Reg.# 20175755), Quail Valley Redemption 60E1 ET (Reg.# 20175267) and KR 395/18 (Reg.# 20183520) from 5/10/19 to sale date.

LOT

120



QVF MS HATCHET 82F5 ET

Quail Valley Farms

20181862 | 82F5 | 2/6/2018 | Bred Heifer

HATCHET 150

1137949

BULL DOG 236

LUCY 157

FC PISTOL 28/0

HARRIS 82/4

20145298

CSC 7-7

3/259

ET T36

M.C. HAMMER 860

HARKNESS 20

GUNSLINGER 13/5

HOLLY 20/3

SILVA 498/4

CSC COWGIRL 071/0



Lot 120

	BW	WW	YW	Milk	T MAT	REA	Marb	FAT
EPDs	0.69	21.59	36.89	-1.63	9.16	0.33	0.02	0.01
Accuracy	0.31	0.33	0.34	0.20	—	0.26	0.27	0.35

	HCW	Sh F	H Prq	Brd Bk	SC	\$G	Carc Idx
EPDs	23.58	0.05	-0.29	-0.12	0.12	34.46	10
Accuracy	0.22	0.02	0.01	0.00	0.15		

QVF MS Hatchet 82F5 (Reg.# 20181862) is our feature of Tinney Farms' Hatchet 150 and our elite REA donor Harris 82/4. Harris 82/4 is going to be a base to a very exciting line of cattle we are building here at QVF. A flush mate brother to 82F5, QVF "The Warden" 82F1 is currently turning heads on the show circuit. "The Warden" is owned by Quincy Nelson. He scanned a tremendous 1.22 REA/CWT with a 4.89 %IMF coming off of test. Harris 82/4 was also THE PICK FLUSH chosen by buyers Briggs Ranches and Harris Riverbend in the 2018 Houston Super Sale. That is saying a lot with all the QVF donors to choose from. Here is your chance to own a future donor for sure. 82F5 posts 4 EPD traits in the Top 4% and 5 traits in the Top 20%. Her maternal brother, QVF 82F3, sells in this year's bull sale and happens to be the No.1 YW and No. 3 REA and WW bull in the entire breed. Breeding information at sale time. Exposed to KR 1541/17 (Reg.# 20175755), Quail Valley Redemption 60E1 ET (Reg.# 20175267) and KR 395/18 (Reg.# 20183520) from 5/10/19 to sale date.

QUAIL VALLEY FARMS FEMALE OFFERING



LOT
121

HARCO 1323
20132359

1425
20143862

HARRIS FARMS 1425E

Quail Valley Farms

20174980 | 1425E | 10/12/2017 | Bred Heifer

HARCO T956 (ET) T956
HARCO T720 (ET) T720
HARCO T956 (ET) T956
C3 RANCH 811

PCR AVALANCHE 95/5 (ET)
MISS WINROCK M253
WENDT **ALL STAR 5876**
HARCO T142/5 (ET)
PCR AVALANCHE 95/5 (ET)
MISS WINROCK M253
PCR AVALANCHE 95/5 (ET) C3
RANCH 2/16

	BW	WW	YW	Milk	T MAT	REA	Marb	FAT
EPDs	0.81	18.21	31.82	6.79	15.90	0.33	0.05	0.02
Accuracy	0.32	0.36	0.36	0.23	—	0.28	0.29	0.38

	HCW	Sh F	H Prq	Brd Bk	SC	\$G	Carc Idx
EPDs	22.22	0.00	-0.06	0.16	-0.27	29.56	10
Accuracy	0.28	0.21	0.11	0.10	0.29		

1425E (Reg.# 20174980) has the pedigree and genomics to be an elite donor. She stacks carcass trait-leader Harco 1323 top and bottom. These are cutting-edge genetics. She posts a whopping 7 traits in the Top 3% and 8 traits in the Top 30%. Her stellar performance and being line bred means she could be a consistent curve-bending producer. The bonus is in the calf coming from one of the three sires she is exposed to! It will be like Christmas time. Palpated safe 2 mos., 7/18/19. Pasture exposed to KR 1541/17 (Reg.# 20175755), Quail Valley Redemption 60E1 ET (Reg.# 20175267) and KR 395/18 (Reg.# 20183520) from 5/10/19 to sale date.

LOT
122

QUAIL VALLEY FARMS 710

Quail Valley Farms

20170276 | 710 | 4/29/2017 | Bred Heifer

GRANDVIEW JOHN 316
201201004853

RED HOT 4010
HARCO T640 (ET)

MISS GRANDVIEW 3124
20143862

PUSHER 804
MISS GRANDVIEW 203
LEOPOLD 506 (ET)
3D PAT 672

	BW	WW	YW	Milk	T MAT	REA	Marb	FAT
EPDs	0.14	2.73	0.07	0.73	2.10	-0.07	-0.04	0.00
Accuracy	0.31	0.33	0.32	0.21	—	0.23	0.24	0.34

	HCW	Sh F	H Prq	Brd Bk	SC	\$G	Carc Idx
EPDs	-0.10	0.00	-0.03	-0.06	-0.08	1.14	1
Accuracy	0.26	0.21	0.10	0.10	0.26		

QVF 710 (Reg.# 20170276) is Grandview genetics through and through. With that said, she is one of very few John 316 daughters to be offered for public auction. She is palpated safe in calf to trait-leader AI sire Pistolero 64/5. The projected EPDs show the calf to list 6 traits in the Top 20%. Palpated safe 6.5 mos., 7/18/19. Pasture exposed to Pistolero 64/5 (Reg.# 20157885) from 10/15/18 to 5/9/19.

LOT
123

QUAIL VALLEY FARMS 713

Quail Valley Farms

20170272 | 713 | 7/25/2017 | Bred Heifer

TF 4111
20152278

TF 909
TF 156
JS ACES AND EIGHTS
HARRIS FARMS 125/0

COPPERHEAD 214
LIBERTY RANCH 53/110
HATCHET 150
GREY ROCKS RANCH* 97/115
ROSE HILL EIGHT BALL 621
MCC'S STAR 123/7
DB 112/6
DB 142/8

QLR MOLLY 1/15
20155229

	BW	WW	YW	Milk	T MAT	REA	Marb	FAT
EPDs	1.18	10.68	18.51	1.67	7.01	0.18	-0.02	0.00
Accuracy	0.25	0.29	0.28	0.18	—	0.20	0.21	0.31

	HCW	Sh F	H Prq	Brd Bk	SC	\$G	Carc Idx
EPDs	13.53	-0.01	-0.02	-0.01	0.24	17.23	10
Accuracy	0.24	0.21	0.10	0.10	0.22		

QVF 713 is a crowd favorite type. This Tinney Farms 909 granddaughter exemplifies everything Tinney Farms is known for! She should have had a halter. She posts 7 EPD traits in the Top 30% to back up her performance, as well. 713's pregnancy, sired by one of our exciting "moderate-frame-with-performance," sires should lend for a very modern-day, elite animal to come. Very exciting! Palpated safe 2 mos., 7/18/19. Pasture exposed to KR 1541/17 (Reg.# 20175755), Quail Valley Redemption 60E1 ET (Reg.# 20175267) and KR 395/18 (Reg.# 20183520) from 5/10/19 to sale date.

QUAIL VALLEY FARMS FEMALE OFFERING

LOT
124



QVF MS 1323 HARCO 915E1 ET

Quail Valley Farms

20176923 | 915E1 | 10/2/2017 | Bred Heifer

HARCO 1323
20132359

HARCO T956 (ET) PCR AVALANCHE 95/5 (ET)
MISS WINROCK M253
WENDT **ALL STAR 5876**
HARCO T142/5 (ET)
COPPERHEAD 214 BIG ORANGE EXPRESS 42/7
TINNEY 923
C-P MISS COPPERHEAD 915C5 RDF SANCHO 7-216
20151423 SILVA 915/3 SILVA 634/7

	BW	WW	YW	Milk	T MAT	REA	Marb	FAT
EPDs	1.69	23.45	40.87	6.28	18.01	0.41	0.08	0.02
Accuracy	0.37	0.39	0.36	0.25	—	0.27	0.28	0.37

	HCW	Sh F	H Prg	Brd Bk	SC	\$G	Carc Idx
EPDs	28.89	0.00	0.03	-0.01	0.07	37.98	10
Accuracy	0.29	0.21	0.11	0.10	0.29		

QVF MS 1323 915E1 (Reg.# 20176923) is an EPD and pedigree dream in modern-day, cutting-edge genetics. Her granddam, the breed-trait curve-bender Silva 915/3, has left a true mark on the breed's genetic improvement. 915E1 posts 7 traits in the Top 30% and 6 in the Top 4%, including 1% REA and 2% Marbling. Her sire, HARCO 1323, has proven to produce performing and elite-scanning cattle in both the Heffe and Harris herds. 915E1's pregnancy is so exciting as well to image what it will be, out of one of the three great young sires it could be from. Palpated safe 2 mos., 7/18/19. Pasture exposed to KR 1541/17 (Reg.# 20175755), Quail Valley Redemption 60E1 ET (Reg.# 20175267) and KR 395/18 (Reg.# 20183520) from 5/10/19 to sale date.

LOT
125



QVF MS 633/13 128F

Quail Valley Farms

20181008 | 128F | 1/2/2018 | Bred Heifer

BRIGGS 633/13
20133818

BRIGGS 546/4 CHIEF GRIZZLY 9502
BRIGGS 511/0 BRIGGS 573/1
BRIGGS 510/8 BRIGGS 504/8
MR CVF 2022 WENDT GERONIMO 3983
BRIGGS 773/8 BRIGGS 003/99
BRIGGS 025/5
BRIGGS 667/5

	BW	WW	YW	Milk	T MAT	REA	Marb	FAT
EPDs	-0.18	7.76	10.93	0.08	3.96	0.23	0.04	0.03
Accuracy	0.30	0.35	0.33	0.22	—	0.24	0.25	0.34

	HCW	Sh F	H Prg	Brd Bk	SC	\$G	Carc Idx
EPDs	7.80	-0.01	-1.00	-0.11	0.62	10.76	10
Accuracy	0.27	0.22	0.14	0.12	0.27		

QVF MS 633/13 128F (Reg.# 20181008) exemplifies Briggs Ranches' base genetics. We wanted to present our best, so we dug deep into our spring-calving herd. Otherwise 128F would stay here, especially if you look at her EPDs ranking Top 15% for 7 traits. Her scan data is off the charts, posting an incredible 1.3 REA/CWT and a 5.01 %IMF. Additionally, for all the pedigree enthusiasts, 128F carries Grizzly, Polled Chief and CVF 2022 in her pedigree, all of which have proven to be part of the base sires to build elite carcass cattle in today's genomic movement. Breeding information provided at sale time. Pasture exposed to KR 1541/17 (Reg.# 20175755), Quail Valley Redemption 60E1 ET (Reg.# 20175267) and KR 395/18 (Reg.# 20183520) from 5/10/19 to sale date.

LOT
126



QVF MS VEGAS 593F

Quail Valley Farms

20181009 | 593F | 2/19/2018 | Bred Heifer

777 411 VEGAS
20140078

SJ HIGH ROLLER 005 HARRIS FARM 12/8 (WAVE MAKER)
SJ LADY VEGAS 755
HARRIS FARMS 17/0 QT SHERMAN TANK (ET) 03/4
TF 381
BRIGGS MULTIPLE SIRE MS MULTIPLE SIRE MS
BRIGGS 010/6 MULTIPLE DAM
WRANGLER'S JACK 1/2
BRIGGS 143/3

	BW	WW	YW	Milk	T MAT	REA	Marb	FAT
EPDs	-0.33	1.35	7.81	-5.35	-4.67	0.00	0.01	-0.01
Accuracy	0.35	0.36	0.34	0.23	—	0.25	0.26	0.34

	HCW	Sh F	H Prg	Brd Bk	SC	\$G	Carc Idx
EPDs	3.04	0.02	0.00	-0.03	-0.33	6.01	8
Accuracy	0.27	0.21	0.12	0.11	0.28		

QVF MS Vegas 593F (Reg.# 20181009) is one most people would not let get away. She is sired by the breed-changing 777 Vegas 411 who sired the 2019 National Champion Bull and the Junior National Champion and Reserve National Champion Females. This is unprecedented in breed history. 593F scanned a tremendous 1.15 REA/CWT with a 5.03 %IMF score. She posts a negative BW and is Top 20% for YW. As most Vegas daughters are, 593F is moderate in her frame but stout in her build, structure and base-width skeleton. If you imagine the next generation like we do, then here is your opportunity to own a heifer that has unlimited breeding potential. QVF IS RETAINING 1 FLUSH OR 6 EMBRYOS. QVF WILL ASSUME ALL COSTS. Breeding information at sale time. Pasture exposed to KR 1541/17 (Reg.# 20175755), Quail Valley Redemption 60E1 ET (Reg.# 20175267) and KR 395/18 (Reg.# 20183520) from 5/10/19 to sale date.

LOT
127



QVF MS COPPERHEAD 6050F

Quail Valley Farms

20182619 | 6050F | 4/18/2018 | Bred Heifer

COPPERHEAD 214
1232971

BIG ORANGE EXPRESS 42/7 5'S EXPECTATIONS (P) 103/3
TINNEY 923 KATY BETH 42/4
RED DOC DINERO 4088 GREY ROCKS RANCH 93/039
RED DOC SANCHIA 3017 LUCY 157
KR 189/11
RDF BONITA 8017
RDF SANCHO 7-216
RDF 1014

	BW	WW	YW	Milk	T MAT	REA	Marb	FAT
EPDs	1.21	11.99	17.48	6.96	12.95	0.16	-0.01	-0.01
Accuracy	0.33	0.39	0.38	0.22	—	0.27	0.29	0.40

	HCW	Sh F	H Prg	Brd Bk	SC	\$G	Carc Idx
EPDs	13.02	-0.01	-0.24	-0.15	0.58	17.03	10
Accuracy	0.29	0.23	0.10	0.10	0.25		

QVF MS Copperhead 6050F (Reg.# 20182619) was built by design, combining the show-ring phenotypes of Tinney Farms and Copperhead 214, and Red Doc Farm's stabilized genomics and performance EPDs. 6050F posts 8 EPD traits in the Top 20% and scanned a tremendous 11-in. REA and 4.81 %IMF. Breeding information at sale time. Pasture exposed to KR 1541/17 (Reg.# 20175755), Quail Valley Redemption 60E1 ET (Reg.# 20175267) and KR 395/18 (Reg.# 20183520) from 5/10/19 to sale date.

QUAIL VALLEY FARMS FEMALE OFFERING

LOT
128



QVF MS AXEMAN 6106F

Quail Valley Farms

20182620 | 6106F | 4/16/2018 | Bred Heifer

TF 4103
20144447

C BAR C 6106
20161156

HATCHET 150
SOUTHERN Y 8 775/5
HH 77-2
MISS GRANDVIEW 2106

BULL DOG 236
LUCY 157
HATCHET 150
SOUTHERN Y 210/3
STONE COLD 21/1
RANS 33 RR33
RED HOT 4010
GRAY OAKS 839

	BW	WW	YW	Milk	T MAT	REA	Marb	FAT
EPDs	0.84	13.36	20.50	-0.66	6.02	0.15	0.00	0.01
Accuracy	0.36	0.38	0.39	0.20	—	0.29	0.30	0.42

	HCW	Sh F	H Prq	Brd Bk	SC	\$G	Carc Idx
EPDs	14.07	0.02	-0.15	-0.14	0.04	19.69	10
Accuracy	0.29	0.21	0.11	0.10	0.26		

QVF MS AXEMAN 6106F is Alabama bred through and through with Hatchet 150, Red Hot and Gray Oaks in her pedigree. 6106F's sire is Axeman 4103, an own son of Tinney Farms Hatchet 150. 6106F writes 4 traits in the Top 5%. Breeding information at sale time Pasture exposed to KR 1541/17 (Reg.# 20175755), Quail Valley Redemption 60E1 ET (Reg.# 20175267) and KR 395/18 (Reg.# 20183520) from 5/10/19 to sale date.

LOT
129



QUAIL VALLEY MS 915F5 ET

Quail Valley Farms

20180379 | 915F5 | 2/17/2018 | Bred Heifer

FC PISTOL 28/0
1290034

C-P MISS COPPERHEAD 915C5
20151423

GUNSLINGER 13/5
HOLLY 20/3
COPPERHEAD 214
SILVA 915/3

WR MAVERICK N113 ET
FAYE 10/2
STONE COLD 21/1
COSSEY 13/9
BIG ORANGE EXPRESS 42/7
TINNEY 923
RDF SANCHE 7-216
SILVA 634/7

	BW	WW	YW	Milk	T MAT	REA	Marb	FAT
EPDs	2.38	27.60	41.45	2.67	16.47	0.25	0.01	0.00
Accuracy	0.33	0.40	0.36	0.25	—	0.27	0.28	0.37

	HCW	Sh F	H Prq	Brd Bk	SC	\$G	Carc Idx
EPDs	28.76	-0.01	-0.15	0.24	0.93	40.05	10
Accuracy	0.29	0.21	0.10	0.10	0.30		

QVF MS 915F5 (Reg.# 20180379) blows the EPD meter and scale up! This Pistol 28/0 daughter is in a very elite Santa Gertrudis breed contemporary group, with 9 EPD traits in the Top 25%. In the breed's move to increase genetic predictability, 915F5 will allow any progressive Santa Gertrudis breeder to breed and produce in elite categories. DONOR ALERT! QVF IS RETAINING 1 FLUSH OR 6 EMBRYOS. QVF WILL ASSUME ALL COSTS. Palpated safe 30 days 7/18/19. Pasture exposed to KR 1541/17 (Reg.# 20175755), Quail Valley Redemption 60E1 ET (Reg.# 20175267) and KR 395/18 (Reg.# 20183520) from 5/10/19 to sale date.

**Lots 130-134 are 5 daughters of
Ms Roberto 9148C5 or 9148C8 and
sired by Masterpiece 101, Mason 0/72 or Pistol 28/0.
We are offering choice or you can sweep the pen.
ALL 5 FEMALES SELL!**

LOT
130



QVF MS MASTERPIECE 9148E1 ET

Quail Valley Farms

20176924 | 9148E1 | 9/29/2017 | Bred Heifer Pick

CIRCLE A MASTERPIECE
20141438

C-P/CREEKLINE MS ROBERTO 9148 C5
20152555

MAGNUM 357
MISS GRANDVIEW 21
BRIGGS 072/13
TF 9148

COLT 45/7
MCTYRE 60/7
RED HOT 4010
CIRCLE A ISADORA (ET) 96
BRIGGS 580/0
BRIGGS 092/10
COPPERHEAD 214
TF 480

	BW	WW	YW	Milk	T MAT	REA	Marb	FAT
EPDs	0.35	7.50	11.15	2.45	6.20	0.03	-0.04	0.01
Accuracy	0.36	0.37	0.33	0.22	—	0.24	0.25	0.35

	HCW	Sh F	H Prq	Brd Bk	SC	\$G	Carc Idx
EPDs	6.78	-0.01	-0.16	0.16	0.49	10.80	3
Accuracy	0.27	0.21	0.11	0.11	0.27		



QVF MS Masterpiece 9148E1 (Reg.# 20176924) is an outlier in her maternal ET sister group. She posts 8 EPD traits in the top 30%. A set of three maternal sisters sold at this year's Crimson Classic, generating \$27,000 and averaging \$9,000 each. Note: There are 5 of these maternal sisters being offered. Here is your chance to build a cutting-edge-breed cow family. Palpated safe 4 mos., 7/18/19. Pasture exposed to Harris Farms 253D3 "Capone" (Reg.# 20167545), Pistolero 64/5 (Reg.# 20157885) and KR 143/17 (Reg.# 20172997) from 10/15/18 to 5/9/19. Pasture exposed to KR 1541/17 (Reg.# 20175755), Quail Valley Redemption 60E1 ET (Reg.# 20175267) and KR 395/18 (Reg.# 20183520) from 5/10/19 to sale date.

QUAIL VALLEY FARMS FEMALE OFFERING

LOT 131 QVF MS MASTERPIECE 9148E3 ET

Quail Valley Farms
20176926 | 9148E3 | 10/6/2017 | Bred Heifer Pick

CIRCLE A MASTERPIECE
20141438
MAGNUM 357
MISS GRANDVIEW 21
C/P/CREEKLINE MS ROBERTO 9148 C5
20152555
BRIGGS 072/13
TF 9148
COLT 45/7
MCTYRE 60/7
RED HOT 4010
CIRCLE A ISADORA (ET) 96
BRIGGS 580/0
BRIGGS 092/10
COPPERHEAD 214
TF 480

	BW	WW	YW	Milk	T MAT	REA	Marb	FAT
EPDs	0.14	4.91	7.79	3.39	5.85	-0.03	-0.06	0.00
Accuracy	0.36	0.37	0.33	0.22	—	0.24	0.25	0.35

	HCW	Sh F	H Prq	Brd Bk	SC	\$G	Carc Idx
EPDs	3.78	-0.01	-0.25	0.06	0.48	7.42	1
Accuracy	0.27	0.21	0.11	0.11	0.27		

QVF MS Masterpiece 9148E3 (Reg.# 20176926) posts 6 EPD traits in the Top 25%. A set of three maternal sisters sold at this year's Crimson Classic, generating \$27,000 and averaging \$9,000 each. Note: There are 5 of these maternal sisters being offered. Here is your chance to build a cutting-edge-breed cow family. Palpated safe 30 days, 7/18/19. Pasture exposed to KR 1541/17 (Reg.# 20175755), Quail Valley Redemption 60E1 ET (Reg.# 20175267) and KR 395/18 (Reg.# 20183520) from 5/10/19 to sale date.



QV Redemption 60E1 ET

Many of our bred females are exposed to Quail Valley Redemption 60E1 ET (Reg.# 20175267).

LOT 132 QVF MS PISTOL 9148E4 ET

Quail Valley Farms
20176927 | 9148E4 | 11/22/2017 | Bred Heifer Pick

FC PISTOL 28/0
1290034
GUNSLINGER 13/5
HOLLY 20/3
C/P/CREEKLINE MS ROBERTO 9148 C5
20152555
BRIGGS 072/13
TF 9148
WR MAVERICK N113 ET N113
FAYE 10/2
STONE COLD 21/1
COSSEY 13/9
BRIGGS 580/0
BRIGGS 092/10
COPPERHEAD 214
TF 480

	BW	WW	YW	Milk	T MAT	REA	Marb	FAT
EPDs	1.18	16.34	27.29	3.18	11.35	0.12	-0.06	0.01
Accuracy	0.29	0.25	0.23	0.14	—	0.17	0.16	0.20

	HCW	Sh F	H Prq	Brd Bk	SC	\$G	Carc Idx
EPDs	17.51	0.00	-0.22	-0.01	0.59	25.64	7
Accuracy	0.15	0.00	0.01	0.01	0.17		

QVF MS Pistol 9148E4 (Reg.# 20176927) posts 6 EPD traits in the Top 20%. A set of three maternal sisters sold at this year's Crimson Classic, generating \$27,000 and averaging \$9,000 each. Note: There are 5 of these maternal sisters being offered. Here is your chance to build a cutting-edge-breed cow family. Palpated safe 3 mos., 7/18/19. Pasture exposed to Harris Farms 253D3 "Capone" (Reg.# 20167545), Pistolero 64/5 (Reg.# 20157885) and KR 143/17 (Reg.# 20172997) from 10/15/18 to 5/9/19. Pasture exposed to KR 1541/17 (Reg.# 20175755), Quail Valley Redemption 60E1 ET (Reg.# 20175267) and KR 395/18 (Reg.# 20183520) from 5/10/19 to sale date.

LOT 133 QVF MS MASTERPIECE 9148E5 ET

Quail Valley Farms
20176928 | 9148E5 | 11/26/2017 | Bred Heifer Pick

CIRCLE A MASTERPIECE
20141438
MAGNUM 357
MISS GRANDVIEW 21
C/P/CREEKLINE MS ROBERTO 9148 C8
20152557
BRIGGS 072/13
TF 9148
COLT 45/7
MCTYRE 60/7
RED HOT 4010
CIRCLE A ISADORA (ET) 96
BRIGGS 580/0
BRIGGS 092/10
COPPERHEAD 214
TF 480

	BW	WW	YW	Milk	T MAT	REA	Marb	FAT
EPDs	1.03	8.35	12.20	2.66	6.83	-0.02	-0.03	0.00
Accuracy	0.27	0.20	0.17	0.11	—	0.11	0.11	0.14

	HCW	Sh F	H Prq	Brd Bk	SC	\$G	Carc Idx
EPDs	7.93	-0.01	-0.06	-0.07	0.22	11.88	3
Accuracy	0.11	0.00	0.01	0.01	0.11		

QVF 9148E5 (Reg.# 20176928) comes from a super flush by National Champion Bull Circle A Masterpiece and our top Roberto 072/13 daughter, MS Roberto 9148C8. A set of three maternal sisters sold at this year's Crimson Classic, generating \$27,000 and averaging \$9,000 each. She has 5 EPD traits in the Top 25% and her pregnancy projects 7 EPD traits in Top 20%. Improving generations in every mating! Note: There are 5 of these maternal sisters being offered. Here is your chance to build a cutting-edge-breed cow family. Palpated safe 5 mos., 7/18/19. Pasture exposed to Pistolero 64/5 (Reg.# 20157885) from 10/15/18 to 5/9/19.

QUAIL VALLEY FARMS FEMALE OFFERING

LOT
134



QVF MS MASON 9148F11 ET

Quail Valley Farms

20182630 | 9148F11 | 2/18/2018 | Bred Heifer Pick

LJV MASON 0/72
1290709

SR 710

LJV DOLLY 8/48

C-P/CREEKLINE MS ROBERTO 9148 C8
20152557

BRIGGS 072/13

TF 9148

WR CHALLENGER L230

RBC MISS PARTNER 390

LJV VAQUERO 4/22

SR 549

BRIGGS 580/0

BRIGGS 092/10

COPPERHEAD 214

TF 480

	BW	WW	YW	Milk	T MAT	REA	Marb	FAT
EPDs	1.90	14.24	22.24	0.65	7.77	0.15	0.03	0.01
Accuracy	0.29	0.31	0.32	0.17	—	0.23	0.24	0.33

	HCW	Sh F	H Prq	Brd Bk	SC	\$G	Carc Idx
EPDs	16.06	-0.01	-0.15	-0.01	0.02	21.26	10
Accuracy	0.21	0.00	0.01	0.01	0.15		



QVF MS Mason 9148F11 (Reg.# 20182630) comes from a super flush by Mason and our top Roberto 072/13 daughter, MS Roberto 9148C8. You rarely get a chance to own a Mason daughter. A set of three maternal sisters sold at this year's Crimson Classic generating \$27,000 and averaging \$9,000 each. Palpated safe 5 mos., 7/18/19. Pasture exposed to Harris Farms 253D3 "Capone" (Reg.# 20167545), Pistolero 64/5 (Reg.# 20157885) and KR 143/17 (Reg.# 20172997) from 10/15/18 to 5/9/19. Pasture exposed to KR 1541/17 (Reg.# 20175755), Quail Valley Redemption 60E1 ET (Reg.# 20175267) and KR 395/18 (Reg.# 20183520) from 5/10/19 to sale date.



Many of our bred females are exposed to
Harris Farms 253D3 "Capone" (Reg.# 20167545).

QUAIL VALLEY FARMS FEMALE OFFERING



KR 651/18 "The Chosen One" (Reg.# 20157596) is the sire of all the embryos available in Lot 135. For more information on him, please see page 20.

LOT
135



EMBRYO PACKAGES

Quail Valley Farms

Matings are all to KR 651/18 "The Chosen One"

Selling 5 embryos, each mating guaranteeing 3 of 5, if done by Transova.

A. Harris 117C (Reg.# 20157880)

Dam of 117F that's in sale.

	BW	WW	YW	Milk	T MAT	REA	Marb	FAT	HCW	Sh F	H Prg	Brd Bk	SC	\$G	Carc Idx
Projected EPDs	1.25	19.23	33.66	3.17	12.78	0.31	0.07	0.02	23.81	-0.01	0.14	0.22	0.71	31.25	10

B. Harris 253D8 (Reg.# 20167549)

Harris Farms 253D3 "Capone's" full sister.

	BW	WW	YW	Milk	T MAT	REA	Marb	FAT	HCW	Sh F	H Prg	Brd Bk	SC	\$G	Carc Idx
Projected EPDs	1.58	21.23	35.35	5.21	15.83	0.32	0.06	0.02	25.40	-0.04	0.28	0.26	0.72	33.24	10

C. SR 65/3 (Reg.# 20132509)

Mason daughter from Strait Ranch.

	BW	WW	YW	Milk	T MAT	REA	Marb	FAT	HCW	Sh F	H Prg	Brd Bk	SC	\$G	Carc Idx
Projected EPDs	0.95	16.99	31.84	1.38	9.87	0.33	0.08	0.02	22.30	-0.03	0.25	0.26	0.64	29.08	10

D. Harris 82/4 (Reg.# 20145298)

One of our best bull producers at Quail Valley Farms.

	BW	WW	YW	Milk	T MAT	REA	Marb	FAT	HCW	Sh F	H Prg	Brd Bk	SC	\$G	Carc Idx
Projected EPDs	0.86	19.52	36.34	2.38	12.14	0.36	0.10	0.02	24.40	-0.01	0.07	0.18	0.72	33.24	10

SAVE THE DATE!

Quail Valley Farms Elite Female Sale
June 5-6, 2020 • Blountsville, AL

GRANDVIEW FARMS OFFERING



LOT
136

EMBRYO PACKAGES

Grandview Farms

Selling 5 ET matings, including 5 embryos per package.

Guaranteeing two pregnancies per lot when ET transfer performed by a certified ET technician agreed upon by buyer and Grandview Farms.

A. Miss Grandview 268 x Gunsmoke 253E

268 is a full sib to Briggs/CVF 2022 and QV Miss Grandview 555 (SGBI High Point Female). Gunsmoke 253E is our gain-test-winning son of Pistol 28/0 out of the prolific donor cow Harris 1247.

	BW	WW	YW	Milk	T MAT	REA	Marb	FAT	HCW	Sh F	H Prg	Brd Bk	SC	\$G	Carc Idx
Projected EPDs	1.61	14.11	21.30	5.45	12.50	0.16	0.01	0.01	16.00	-0.03	-0.13	-0.13	0.12	20.55	10

B. Miss Grandview 9115 x Grandview Pusher 804

Proven mating that produced 2015 National Champion Female Annie and donor female Miss Grandview 5100,

	BW	WW	YW	Milk	T MAT	REA	Marb	FAT	HCW	Sh F	H Prg	Brd Bk	SC	\$G	Carc Idx
Projected EPDs	1.25	19.23	33.66	3.17	12.78	0.31	0.07	0.02	23.81	-0.01	0.14	0.22	0.71	31.25	10

C. Miss Grandview Little Annie 5100 x CA Navidad 8/5

5100 is the dam of Miss 777 Red Fern, 2018 National Calf Champion Female. CA 8/5 is a trait-leading son of Pistol 28/0.

	BW	WW	YW	Milk	T MAT	REA	Marb	FAT	HCW	Sh F	H Prg	Brd Bk	SC	\$G	Carc Idx
Projected EPDs	1.15	13.42	14.22	-0.27	6.44	0.05	-0.03	0.01	10.80	0.01	0.06	-0.07	0.48	15.33	6

D. Miss Grandview 268 x CA Navidad 8/5

A unique mating of exceptional phenotype and powerful genotype. An exciting match up!

	BW	WW	YW	Milk	T MAT	REA	Marb	FAT	HCW	Sh F	H Prg	Brd Bk	SC	\$G	Carc Idx
Projected EPDs	0.73	11.10	11.04	1.16	6.71	0.03	0.03	0.00	7.81	-0.03	-0.03	-0.16	0.04	12.17	10

E. Miss Grandview 21 x Magnum 357

Proven mating, these offspring will be full sibs to 2017 National Champion Masterpiece 101. Definite show ring potential!

	BW	WW	YW	Milk	T MAT	REA	Marb	FAT	HCW	Sh F	H Prg	Brd Bk	SC	\$G	Carc Idx
Projected EPDs	0.58	7.40	7.42	0.91	4.61	0.03	-0.01	0.01	5.67	-0.02	0.04	-0.04	0.33	8.16	6

GRANDVIEW FARMS OFFERING



PICK OF FALL 2019 ET CALVES

Grandview Farms

Selling our pick of 30 ET calves born fall 2019, representing 18 matings.

This offering includes:

- 17 sired by John 316 and 6 donors
- 5 sired by Pistol 28/0 and 4 donors
- As well as calves sired by Red Hot 4010, Gunsmoke 253E and Masterpiece 101.
- 3 sired by Magnum 357 and 2 donors
- 2 sired by Silva 498/4

These matings provide herd sire and donor female potential. Selection to be made spring 2020.



SEMEN TANK

Grandview Farms

Offering semen on herd sires that have made an impact on our program and the breed.

Selling 10 straws on 7 different bulls – 70 straws total, including the fully charged semen tank.

- **John 316:** Red Hot 4010 son, Res. National Champion.
- **Grandview 209:** Red Hot 4010 x Briggs 003/99, maternal half-brother to CVF 2022.
- **Grandview Lighting 5160:** Phenotype and genotype.
- **Stryker 1181C3 (Briggs) Harco T958 and CVF 2022:** EPDs and eye appeal.
- **Sledge 789:** 2010 National Champion Bull.
- **Mars 1/91:** Two-time Reserve National Champion. 5 traits in breed's Top 3%.
- **Red Hot 4010:** A cornerstone patriarch of our herd. Sire of John 316.



MISS GRANDVIEW 1441G1 ET

Grandview Farms

20187187 | 1441G1 | 10/2/2018 | Open Heifer

FC PISTOL 28/0
1290034

GUNSLINGER 13/5

WR MAVERICK N113 ET
FAYE 10/2

HOLLY 20/3

STONE COLD 21/1
COSSEY 13/9

HARCO T958 (ET)

PCR AVALANCHE 95/5 (ET)
MISS WINROCK M253

1441
20145424

HARCO T848 (ET)

CHAPS 372
2S RANCH 4192

	BW	WW	YW	Milk	T MAT	REA	Marb	FAT
EPDs	3.34	34.15	48.74	5.45	22.53	0.34	0.00	0.01
Accuracy	0.22	0.29	0.22	0.13	—	0.16	0.15	0.18

	HCW	Sh F	H Prg	Brd Bk	SC	\$G	Carc Idx
EPDs	35.66	0.00	0.00	0.04	0.58	47.78	10
Accuracy	0.15	0.00	0.00	0.00	0.16		



A Pistol 28/0 daughter out of donor cow 1441. She combines the phenotype to compete and the genotype to be a donor cow. Top 1% in WW, YW, HCW and REA; Top 3% in SC; Top 5% in Milk; and Top 10% in BBK. Grandview Farms retains the right to 1 flush at buyer's convenience.

GRANDVIEW FARMS FEMALE OFFERING



Miss Grandview Annie, dam of Lot 140.



LOT 140 MISS GRANDVIEW 285G7 ET

Grandview Farms

20187145 | 285G7 | 10/2/2018 | Open Heifer

777 411 VEGAS
20140078

SJ HIGH ROLLER 005
HARRIS FARMS 17/0

GRANDVIEW ANNIE
201201001053

PUSHER 804
MISS GRANDVIEW 9115
HARRIS FARM 12/8 (WAVE MAKER)
SJ LADY VEGAS 755
QT SHERMAN TANK (ET) 03/4
TF 381
PUSHER C9
MISS GRANDVIEW 203
TF 395
MISS GRANDVIEW 1112

	BW	WW	YW	Milk	T MAT	REA	Marb	FAT
EPDs	-0.28	6.12	12.02	-0.29	2.77	0.08	-0.01	0.00
Accuracy	0.32	0.32	0.23	0.12	—	0.16	0.15	0.19

	HCW	Sh F	H Prg	Brd Bk	SC	\$G	Carc Idx
EPDs	6.57	0.02	0.17	-0.04	-0.12	10.86	8
Accuracy	0.17	0.00	0.03	0.01	0.15		

This championship mating includes National Champions 777 Vegas and Grandview Annie. She proves out her parentage. Muscle, mass and bone in an attractive heifer.

LOT 141 MISS GRANDVIEW 935

Grandview Farms

20187186 | 935 | 10/10/2018 | Open Heifer

CREECH 100-4
20141175

FC PISTOL 28/0
HARDING 437/2
GUNSlinger 13/5
HOLLY 20/3
HF FRED 303/9
MISS BRANDON P267
CREECH NEVER AGAIN 911-4
RDF SANCHE'S NEVER BEFORE 1136
LIBERTY RANCH 53/324
HARRIS DOUBLE WIDE 18/2
CREECH 213

	BW	WW	YW	Milk	T MAT	REA	Marb	FAT
EPDs	1.76	15.40	25.89	0.76	8.46	0.12	-0.01	0.01
Accuracy	0.26	0.20	0.18	0.05	—	0.12	0.12	0.13

	HCW	Sh F	H Prg	Brd Bk	SC	\$G	Carc Idx
EPDs	17.68	-0.01	-0.01	0.00	0.45	24.28	10
Accuracy	0.12	0.00	0.00	0.00	0.06		

An eye appealing, polled, performance-bred heifer. She is sired by a Pistol 28/0 son and a Creech Never Again daughter. Top 20% or higher in 6 EPD traits.

LOT 142 MISS GRANDVIEW 966

Grandview Farms

20187177 | 966 | 12/15/2018 | Open Heifer

BRIGGS 1181C3
20157986

HARCO 1336
BRIGGS 118/11
GRANDVIEW 523
MISS GRANDVIEW 875
HARCO T958 (ET)
HARCO T825 (ET)
MR CVF 2022
BRIGGS 072/2
PUSHER C9
TRI STAR 039/00
RED HOT 4010
MISS GRANDVIEW 950

	BW	WW	YW	Milk	T MAT	REA	Marb	FAT
EPDs	0.91	18.07	24.81	4.24	13.28	0.26	-0.03	0.01
Accuracy	0.12	0.21	0.12	0.07	—	0.07	0.06	0.08

	HCW	Sh F	H Prg	Brd Bk	SC	\$G	Carc Idx
EPDs	18.14	0.02	0.03	-0.08	-0.01	24.60	10
Accuracy	0.08	0.00	0.01	0.00	0.06		

A Stryker 1181C3 daughter out of a Pusher C9 and Red Hot 4010-bred dam. Dark and pretty, she has the look of a future brood cow. Top 1% in WW and REA; Top 2% in YW and HCW; and Top 15% in milk.

LOT 143 MISS GRANDVIEW 973

Grandview Farms

20190694 | 973 | 1/4/2019 | Open Heifer

PISTOL 6102
20166076

FC PISTOL 28/0
BRIGGS 005/11
GRANDVIEW 017
HARCO T640 (ET)
GUNSlinger 13/5
HOLLY 20/3
BRIGGS 028/5
BRIGGS 019/3
RED HOT 4010
MISS GRANDVIEW 554
WENDT **ALL STAR 5876**
25 RANCH 0120

	BW	WW	YW	Milk	T MAT	REA	Marb	FAT
EPDs	0.66	10.86	12.95	0.44	5.87	0.03	-0.03	0.00
Accuracy	0.11	0.11	0.09	0.06	—	0.06	0.05	0.06

	HCW	Sh F	H Prg	Brd Bk	SC	\$G	Carc Idx
EPDs	8.72	0.02	0.00	-0.02	0.22	13.41	4
Accuracy	0.06	0.00	0.00	0.00	0.06		

A Pistol 6102 daughter out of a maternal half-sister to John 316. Bred-in performance and eye appeal.

GRANDVIEW FARMS FEMALE OFFERING



LOT

144



MISS GRANDVIEW 793

Grandview Farms

20174648 | 793 | 4/3/2017 | Bred Heifer

GRANDVIEW 017

1292034

RED HOT 4010

MISS GRANDVIEW 554

SLEDGE 789

GRANDVIEW S256

20120423


PG RICARDO 5004 (ET)

MR RED W101
2S RANCH 831
W H CREEK 036
GRANDVIEW'S LADY 021
BRIGGS 567/5
WENDT 0/1
KR RICARDO 182/02
WENDT 3942

	BW	WW	YW	Milk	T MAT	REA	Marb	FAT
EPDs	0.41	7.19	5.81	-0.94	2.66	-0.01	-0.05	0.00
Accuracy	0.37	0.37	0.32	0.24	—	0.21	0.22	0.32

	HCW	Sh F	H Prg	Brd Bk	SC	\$G	Carc Idx
EPDs	4.00	-0.03	-0.10	0.03	0.18	6.94	2
Accuracy	0.27	0.21	0.11	0.10	0.23		

dam. Very attractive with tremendous depth and flank. Sells bred to 915C8. Probable show prospect on the way in fall 2019.

LOT 145  **MISS GRANDVIEW 810**

Grandview Farms
20175592 | 810 | 10/22/2017 | Bred Heifer

GRANDVIEW 040
1293743

MISS GRANDVIEW 423
20135892

RED HOT 4010
MISS GRANDVIEW 203
PUSHER 804
MISS GRANDVIEW 1444

MR RED W101
2S RANCH 831
GRANDE 5/2
MISS GRANDVIEW 554
PUSHER C9
MISS GRANDVIEW 203
EL CAPITAN 8 3223
GRANDVIEW DYNASTY 7444

	BW	WW	YW	Milk	T MAT	REA	Marb	FAT
EPDs	1.32	9.74	6.91	1.72	6.59	-0.02	-0.03	0.00
Accuracy	0.37	0.39	0.38	0.23	—	0.28	0.30	0.42

	HCW	Sh F	H Prg	Brd Bk	SC	\$G	Carc Idx
EPDs	6.90	-0.01	0.22	-0.14	0.18	8.73	4
Accuracy	0.29	0.21	0.10	0.10	0.24		

Red Hot 4010 on the top side and Pusher 804 on her dam's side. Ratios of 110% WW, 107% YW and 111% REA. Built-in production. Sells bred to 915C8, due to calve spring 2020.



LOT

146



MISS GRANDVIEW 812

Grandview Farms

20175593 | 812 | 10/23/2017 | Bred Heifer

GRANDVIEW 040

1293743

RED HOT 4010

MISS GRANDVIEW 203

CIRCLE A DILLINGER 40

LIBERTY'S PAYBACK 15/05

1256378

VICTORIA'S SECRET C010

MR RED W101
2S RANCH 831
GRANDE 5/2
MISS GRANDVIEW 554
MC NUGGET 56/6
DOUBLES DEE DEE 03
GRANDE 5/2
GRANDVIEW CIERRA 433

	BW	WW	YW	Milk	T MAT	REA	Marb	FAT
EPDs	0.36	1.08	-5.41	0.47	1.01	-0.08	0.01	-0.01
Accuracy	0.38	0.39	0.38	0.22	—	0.28	0.30	0.42

	HCW	Sh F	H Prg	Brd Bk	SC	\$G	Carc Idx
EPDs	-2.14	0.00	-0.10	-0.01	0.13	-3.35	6
Accuracy	0.29	0.21	0.10	0.10	0.24		

and goes back to Cierra 433. Bred in the purple. She sells bred to 915C8. She boasts a 112% ratio in IMF and 202.5 sq. inch pelvic measurement. Good looks and performance in this mating.

GRANDVIEW FARMS FEMALE OFFERING

LOT
147



MISS GRANDVIEW 813

Grandview Farms

20175594 | 813 | 11/10/2017 | Bred Heifer

CIRCLE A MASTERPIECE

20141438

MAGNUM 357

MISS GRANDVIEW 21

PUSHER 804

MISS GRANDVIEW 1/15

20158634

MISS GRANDVIEW 1/8

COLT 45/7

MCTYRE 60/7

RED HOT 4010

CIRCLE A ISADORA (ET) 96

PUSHER C9

MISS GRANDVIEW 203

TF 395

FRONTIER MAGNOLIA 701/7

	BW	WW	YW	Milk	T MAT	REA	Marb	FAT
EPDs	0.79	3.78	1.04	1.04	2.93	-0.08	-0.04	0.00
Accuracy	0.35	0.38	0.38	0.20	—	0.28	0.30	0.42

	HCW	Sh F	H Prg	Brd Bk	SC	\$G	Carc Idx
EPDs	1.45	-0.02	0.02	0.10	0.38	2.24	2
Accuracy	0.29	0.21	0.10	0.10	0.25		

An own daughter of Masterpiece 101 out of a Pusher and Tonka-bred cow. Deep bodied, deep twist and wide based, this is a future brood cow. This calf will put together performance and phenotype. Sells bred to 915C8, due to calve spring 2020.



Lot 148

Masterpiece 101 and out of a Red Hot 4010-bred dam, making her line bred Red Hot. Sells bred to 915C8, due to calve spring 2020.



Lot 147

LOT
148



MISS GRANDVIEW 819

Grandview Farms

20175599 | 819 | 11/14/2017 | Bred Heifer

CIRCLE A MASTERPIECE

20141438

MAGNUM 357

MISS GRANDVIEW 21

GRANDVIEW 5105

20158607

GRANDVIEW 017

GRANDVIEW S256

COLT 45/7

MCTYRE 60/7

RED HOT 4010

CIRCLE A ISADORA (ET) 96

RED HOT 4010

MISS GRANDVIEW 554

SLEDGE 789

PG RICARDO 5004 (ET)

	BW	WW	YW	Milk	T MAT	REA	Marb	FAT
EPDs	0.35	4.59	2.96	1.57	3.87	-0.04	-0.01	0.00
Accuracy	0.35	0.37	0.32	0.20	—	0.22	0.22	0.32

	HCW	Sh F	H Prg	Brd Bk	SC	\$G	Carc Idx
EPDs	2.44	-0.02	0.05	-0.04	0.47	3.91	4
Accuracy	0.27	0.21	0.10	0.10	0.25		

An attractive and stout young female sired by National Champion Masterpiece 101 and out of a Red Hot 4010-bred dam, making her line bred Red Hot. Sells bred to 915C8, due to calve spring 2020.

LOT
149



MISS GRANDVIEW 825

Grandview Farms

20175600 | 825 | 11/17/2017 | Bred Heifer

GRANDVIEW JOHN 316

201201004853

RED HOT 4010

HARCO T640 (ET)

SLEDGE 789

MISS GRANDVIEW 9154

1292137

CIRCLE A HILLARY 77

MR RED W101

25 RANCH 831

WENDT **ALL STAR 5876**

25 RANCH 0120

BRIGGS 567/5

WENDT 0/1

CIRCLE A STETSON 12

MISS GRANDVIEW 772

	BW	WW	YW	Milk	T MAT	REA	Marb	FAT
EPDs	0.57	5.03	3.62	-0.45	2.07	-0.06	-0.04	-0.01
Accuracy	0.36	0.38	0.39	0.21	—	0.28	0.30	0.42

	HCW	Sh F	H Prg	Brd Bk	SC	\$G	Carc Idx
EPDs	2.26	0.00	-0.09	-0.20	-0.26	4.55	2
Accuracy	0.29	0.21	0.10	0.10	0.25		

This John 316 daughter out of a Sledge daughter has power bred in. Sells bred to 915C8. Due to calve spring 2020.

LOT
150



MISS GRANDVIEW 826

Grandview Farms

20175601 | 826 | 11/18/2017 | Bred Heifer

GRANDVIEW 209

20115991

RED HOT 4010

BRIGGS 003/99

MISS GRANDVIEW 847

1292107

GRAY OAKS 502 (ET)

GRAY OAKS 110

MR RED W101

25 RANCH 831

BRIGGS 023/91

B.F. STOUT 502

KR RICARDO 182/02

WENDT 4071

POLLED CHIEF 1/4

ET 160

	BW	WW	YW	Milk	T MAT	REA	Marb	FAT
EPDs	1.01	7.76	14.30	-2.22	1.66	0.08	-0.02	0.01
Accuracy	0.38	0.40	0.40	0.23	—	0.29	0.31	0.43

	HCW	Sh F	H Prg	Brd Bk	SC	\$G	Carc Idx
EPDs	9.77	-0.01	-0.10	0.09	-0.05	13.11	8
Accuracy	0.30	0.21	0.11	0.10	0.25		

A good-fronted, stand-up Grandview 209 daughter out of a Gray Oaks bred dam. YW and REA ratios of 112% with a 181.25 sq. inch pelvic measurement. Sells bred to 915C8, due to calve spring 2020.

GRANDVIEW FARMS FEMALE OFFERING

LOT

151



MISS GRANDVIEW 827

Grandview Farms

20175602 | 827 | 11/19/2017 | Bred Heifer

CIRCLE A MASTERPIECE

20141438

MAGNUM 357
MISS GRANDVIEW 21
COLT 45/7
MCTYRE 60/7
RED HOT 4010
CIRCLE A ISADORA (ET) 96
RED HOT 4010
HARCO T640 (ET)
PUSHER C9
MISS GRANDVIEW 203

GRANDVIEW 5111

20158608

MISS GRANDVIEW 339T

	BW	WW	YW	Milk	T MAT	REA	Marb	FAT
EPDs	-0.16	-2.00	-5.19	-2.35	-3.35	-0.15	-0.02	0.00
Accuracy	0.35	0.38	0.38	0.19	—	0.28	0.30	0.42

	HCW	Sh F	H Prg	Brd Bk	SC	\$G	Carc Idx
EPDs	-3.97	-0.01	-0.06	-0.19	0.40	-4.43	1
Accuracy	0.29	0.21	0.10	0.10	0.25	—	—

Another Masterpiece daughter out of a John 316 daughter. Her maternal grandmother, 339T, is a full sib to Pusher 804. Bred-in phenotype in this very correct heifer. Sells bred to 915C8. Show potential in this mating! Due to calve spring 2020.



LOT

152



MISS GRANDVIEW 829

Grandview Farms

20175603 | 829 | 11/22/2017 | Bred Heifer

GRANDVIEW 209

20115991

RED HOT 4010
BRIGGS 003/99
HATCHET 150
GLADYS 46/0
MR RED W101
2S RANCH 831
BRIGGS 023/91
B.F.STOUT 502
BULL DOG 236
LUCY 157
MARS 1/91
RAFTER Y'S MAUREEN 423/8

	BW	WW	YW	Milk	T MAT	REA	Marb	FAT
EPDs	1.34	13.50	23.13	-2.60	4.16	0.09	-0.02	0.00
Accuracy	0.36	0.38	0.40	0.21	—	0.29	0.31	0.43

	HCW	Sh F	H Prg	Brd Bk	SC	\$G	Carc Idx
EPDs	15.27	0.01	-0.26	0.00	-0.29	21.59	9
Accuracy	0.30	0.21	0.11	0.10	0.26	—	—

A Grandview 209 daughter out of a Hatchet and Mars-bred dam. Clean and good boned, she posts strong growth numbers. Sells bred to 915C8. This calf will be highly performance bred. Due to calve spring 2020.

LOT

153



MISS GRANDVIEW 836

Grandview Farms

20175604 | 836 | 12/6/2017 | Bred Heifer

GRANDVIEW 209

20115991

RED HOT 4010
BRIGGS 003/99
SLEDGE 789
TF 398
MR RED W101
2S RANCH 831
BRIGGS 023/91
B.F.STOUT 502
BRIGGS 567/5
WENDT 0/1
HATCHET 150
DOUBLE T DIAMOND 804

	BW	WW	YW	Milk	T MAT	REA	Marb	FAT
EPDs	0.70	11.12	18.51	1.84	7.40	0.05	-0.05	0.00
Accuracy	0.36	0.38	0.38	0.22	—	0.27	0.29	0.41

	HCW	Sh F	H Prg	Brd Bk	SC	\$G	Carc Idx
EPDs	11.30	0.01	-0.27	0.11	-0.43	17.41	4
Accuracy	0.29	0.21	0.11	0.10	0.25	—	—

She is a clean-fronted, feminine, good-boned Grandview 209 daughter out of a Sledge and Hatchet-bred dam. Sells bred to 915C8. Proven genetics. Due to calve spring 2020.

LOT

154



MISS GRANDVIEW 837

Grandview Farms

20175605 | 837 | 12/7/2017 | Bred Heifer

GRANDVIEW JOHN 316

201201004853

RED HOT 4010
HARCO T640 (ET)
TF 395
GRANDVIEW 222
MR RED W101
2S RANCH 831
WENDT **ALL STAR 5876**
2S RANCH 0120
HATCHET 150
SUGAR 97/006
GRANDVIEW 719
NINE BAR 2343

	BW	WW	YW	Milk	T MAT	REA	Marb	FAT
EPDs	0.03	2.39	2.04	1.55	2.74	-0.13	-0.05	0.00
Accuracy	0.36	0.38	0.37	0.21	—	0.27	0.29	0.41

	HCW	Sh F	H Prg	Brd Bk	SC	\$G	Carc Idx
EPDs	-0.18	-0.01	0.02	0.07	-0.21	2.38	1
Accuracy	0.29	0.21	0.10	0.10	0.25	—	—

A balanced, correct-made John 316 daughter out of a powerful Tonka 395 daughter. She sells bred to 915C8. This calf will be level, deep and eye appealing. Due to calve spring 2020.

LOT

155



MISS GRANDVIEW 9141E4

Grandview Farms

20176599 | 9141E4 | 4/7/2017 | Bred Heifer

MAGNUM 357

1219825

COLT 45/7
MCTYRE 60/7
RED HOT 4010
MISS GRANDVIEW 0114
KUDO 084/92
BENNETT 85/4
NINE BAR 12
MCTYRE FARMS 52/94
MR RED W101
2S RANCH 831
GRANDVIEW TREND 522
NINE BAR 040

	BW	WW	YW	Milk	T MAT	REA	Marb	FAT
EPDs	1.16	14.77	16.59	-0.92	6.47	0.11	-0.01	0.00
Accuracy	0.32	0.33	0.32	0.21	—	0.22	0.23	0.33

	HCW	Sh F	H Prg	Brd Bk	SC	\$G	Carc Idx
EPDs	12.59	0.00	-0.07	0.07	0.15	17.52	10
Accuracy	0.26	0.21	0.10	0.10	0.24	—	—

An ET daughter of Magnum 357 and donor 9141 a Red Hot 4010 daughter, making her a ¾ sister to National Champion Masterpiece 101. This powerful heifer sells bred to 915C8, a strong genetic mating! Due to calve fall 2019.

GRANDVIEW FARMS FEMALE OFFERING

LOT
156

235/4

Grandview Farms

20141400 | 235/4 | 3/19/2014 | Pair w/ Heifer Calf

CA 738
1277364

DB 65/4

WENDT **ALL STAR 5876**
BRIGGS 023/1

GRAY OAKS 444

BLACK WARRIOR FARM 1088
GRAY OAKS 046

WENDT 5321

PARTNER 5273

BRIGGS 539/5
1292141

BRIGGS 501/1

WENDT 5072
WENDT 5321
BRIGGS 542/99

	BW	WW	YW	Milk	T MAT	REA	Marb	FAT
EPDs	-0.47	-0.72	0.68	-10.59	-10.95	0.01	-0.04	0.00
Accuracy	0.29	0.29	0.15	0.22	—	0.08	0.06	0.07

	HCW	Sh F	H Prg	Brd Bk	SC	\$G	Carc Idx
EPDs	-0.19	0.03	0.03	-0.24	0.65	0.19	2
Accuracy	0.12	0.01	0.01	0.01	0.03		

This female displays width at the pins, natural muscle and volume. She is All Star 5876 bred on the top and maternally Partner 5273 bred. Sells with heifer calf ID 986 (Reg.# 20190663), born 1/28/19, sired by Grandview Lighting 5160 and sells bred back to John 316. A proven productive package.



Lot 156



Lot 157

1/91 daughter out of a Gridmaker 820 and King Ranch Ricardo-bred dam, with strong growth and carcass numbers. She also puts together balance, power and femininity. She sells with her bull calf ID 9128 (Reg.# 20190665), born 4/5/19 and sired by Pistolero 64/5, a full brother to Gunsmoke 253E. The cow sells AI'd to Copperhead 915C4 (Reg.# 20151422), and later exposed to John 316. Pregnancy status announced sale day. Grandview Farm retains the right to one flush at the buyer's convenience.



John 316

Most of our pairs are exposed back to John 316 (Reg.# 201201004853).

LOT
157

MISS GRANDVIEW 614

Grandview Farms

20160585 | 614 | 2/26/2016 | Pair w/ Bull Calf

MARS 1/91
1072418

C 3 RANCH 20

COSGROVE J 13
FULL MOON 32

CHRISTMAS LADY 38/1

ALEXANDER 9
4420

HARCO T155/5 (ET)

SCC GRID MAKER 820

HARRIS FARMS 39/8

1274526

HARRIS FARMS T065/5 (ET)

HARRIS FARMS 089/1

KR RICARDO 182/02

FIVE OAKS 62/0

	BW	WW	YW	Milk	T MAT	REA	Marb	FAT
EPDs	1.51	17.99	19.29	2.14	11.14	0.15	-0.02	0.01
Accuracy	0.31	0.23	0.18	0.21	—	0.10	0.09	0.13

	HCW	Sh F	H Prg	Brd Bk	SC	\$G	Carc Idx
EPDs	15.00	-0.04	0.12	-0.11	0.23	20.70	10
Accuracy	0.13	0.01	0.01	0.01	0.06		

This cow provides a great opportunity at proven genetics. She is a Mars 1/91 daughter out of a Gridmaker 820 and King Ranch Ricardo-bred dam, with strong growth and carcass numbers. She also puts together balance, power and femininity. She sells with her bull calf ID 9128 (Reg.# 20190665), born 4/5/19 and sired by Pistolero 64/5, a full brother to Gunsmoke 253E. The cow sells AI'd to Copperhead 915C4 (Reg.# 20151422), and later exposed to John 316. Pregnancy status announced sale day. Grandview Farm retains the right to one flush at the buyer's convenience.

Grandview Farms has been a proud member of the Alabama Connection from its inception. At Grandview we strive to produce functional, fertile and predictable cattle for all levels of the beef business. By implementing intense genetic selection in our AI and ET programs, we are driven to keep improving upon the attributes of this great breed. We sincerely thank you for attending the sale and invite you to visit us at Grandview Farms in Hamilton, Alabama.

- Delmo Payne 

GRANDVIEW FARMS FEMALE OFFERING



MR DOUBLE TT 228
1287701

MR DOUBLE TT JOE 043/99
MISS DOUBLE TT 22

MISS TT 298 298-8
1290653

MESQUITE 983
DOUBLE TT MULTIPLE DAM MD

57
BRIGGS 033/96
MR DOUBLE TT CROOK HORN 106
MISS DOUBLE TT 25
HATCHET 150
WENDT 6421
DOUBLE TT MULTIPLE SIRE MS
DOUBLE TT MULTIPLE DAM MD

A long, level Double TT bred female, she has consistently produced show prospect calves and didn't miss this time! Sells with heifer calf ID 967 (Reg.# 20190661), born 1/2/19 and sired by 2017 National Champion Masterpiece 101. Cow sells bred back to John 316. This heifer calf is correct, balanced and has that show ring eye appeal!

LOT 158

1603

Grandview Farms

20156331 | 1603 | 7/11/2015 | Pair w/ Heifer Calf

	BW	WW	YW	Milk	T MAT	REA	Marb	FAT
EPDs	-0.63	-2.04	-4.76	-1.37	-2.39	-0.07	-0.07	0.00
Accuracy	0.22	0.19	0.10	0.09	—	0.05	0.04	0.05

	HCW	Sh F	H Prg	Brd Bk	SC	\$G	Carc Idx
EPDs	-4.51	0.04	0.02	0.00	0.23	-4.15	1
Accuracy	0.08	0.00	0.00	0.00	0.02	—	—

LOT 159

MISS GRANDVIEW 6100

Grandview Farms

20168606 | 6100 | 4/4/2016 | Pair w/ Heifer Calf

GRANDVIEW 040
1293743

RED HOT 4010

MISS GRANDVIEW 203

MISS GRANDVIEW S227
20116090

SLEDGE 789

PF'S CANDY 31/6

MR RED W101
2S RANCH 831
GRANDE 5/2
MISS GRANDVIEW 554
BRIGGS 567/5
WENDT 0/1
MCNEAR 602/3
DUNN 114/9

	BW	WW	YW	Milk	T MAT	REA	Marb	FAT
EPDs	0.33	5.97	3.80	1.90	4.89	0.00	-0.01	0.00
Accuracy	0.17	0.15	0.11	0.09	—	0.07	0.06	0.09

	HCW	Sh F	H Prg	Brd Bk	SC	\$G	Carc Idx
EPDs	3.12	-0.01	-0.04	-0.02	0.14	5.05	7
Accuracy	0.07	0.00	0.00	0.00	0.05	—	—

6100 is a stout, good-boned Red hot 4010 and National Champion Sledge-bred female. This young cow sells with her fancy heifer calf ID 975 (Reg.# 20190662), born 1/9/19, sired by Grandview John 316 and is bred back the same way. A proven young female with a lot of future!

LOT 160

GRANDVIEW 5137

Grandview Farms

20158619 | 5137 | 4/15/2015 | Pair w/ Heifer Calf

GRANDVIEW 040
1293743

RED HOT 4010

MISS GRANDVIEW 203

LONK EKALAKA 701T

DOUBLE E FARMS 374

MR RED W101
2S RANCH 831
GRANDE 5/2
MISS GRANDVIEW 554
HAMMEL EKALAKA 85P
LONK LARKABA P494
DCR 775
BRIGGS 546/96

	BW	WW	YW	Milk	T MAT	REA	Marb	FAT
EPDs	-1.05	-4.37	-9.53	3.63	1.45	-0.08	0.01	0.00
Accuracy	0.20	0.16	0.13	0.11	—	0.07	0.07	0.10

	HCW	Sh F	H Prg	Brd Bk	SC	\$G	Carc Idx
EPDs	-7.16	-0.01	0.11	0.03	0.30	-8.42	3
Accuracy	0.08	0.00	0.00	0.00	0.06	—	—

This deep-flanked, level and clean-fronted female is a real brood cow. A Red Hot 4010 granddaughter sells with her heifer calf ID 9101 (Reg.# 20190664), born 2/18/19 and sired by Pistol 6102, our gain-test-winning young herd sire. Cow sells bred back to John 316. Red Hot 4010 line breeding at its best!

GRAY OAKS FARM FEMALE OFFERING



LOT
161

GRAY OAKS 833

Gray Oaks Farm

20182252 | 833 | 4/2/2018 | Open Heifer

VIPER 400
20140758

TF 909

COPPERHEAD 214
LIBERTY RANCH 53/110
KUBECKA 47
TF 486

TF 708

CB 418
20140095

ZEB 802

LIBERTY RANCH 63/11F
LIBERTY RANCH 53/324
CREEL XMAS CHUNK 810
HARRIS FARMS 909

CB 111

	BW	WW	YW	Milk	T MAT	REA	Marb	FAT
EPDs	1.61	9.55	18.85	1.52	6.30	0.10	-0.05	0.00
Accuracy	0.36	0.38	0.32	0.20	—	0.22	0.22	0.32

	HCW	Sh F	H Prg	Brd Bk	SC	\$G	Carc Idx
EPDs	13.75	-0.02	0.17	-0.01	0.52	17.02	8
Accuracy	0.27	0.21	0.10	0.10	0.23		

A Viper 400 daughter. Very impressive 7 traits in the breed's Top 15%. Sells open.



Sire of Lot 161. Many of our pairs and bred females carry the service of Viper 400 (Reg.# 20140758).

Gray Oaks Farm consists of 500 acres of Tennessee Valley bottom land, located around Russellville, Ala. We have always liked polled, thicker, meatier and lower-framed score cattle and that seems to be coming into popularity around the breed. We have been working hard on improving our EPDs over the last several years and believe that is evident in today's offering!

I'm available for questions anytime – feel free to call.

– Dennis Jones



GRAY OAKS FARM FEMALE OFFERING



LOT

162



GRAY OAKS 853

Gray Oaks Farm

20186281 | 853 | 10/10/2018 | Open Heifer

RED DOC SANCHO ET 3318

20133647

RDF SANCHO 7-216

OLIVAREZ RANCHES 1/921

JP COUCH 306C

HARRIS FARMS 59/2

20140095

QT KATARINA 14/6

RDF LAURELES 149/03
CB 1509

OLIVAREZ RANCHES 4/545
OLIVAREZ 93/454

FIVE OAKS 005
JP COUCH 125C

QT CINNAMON BRAZOS 10/3
QT JOSIE 04/4

	BW	WW	YW	Milk	T MAT	REA	Marb	FAT
EPDs	1.82	15.26	17.80	1.82	9.46	0.07	0.00	0.00
Accuracy	0.37	0.35	0.32	0.21	—	0.22	0.23	0.33

	HCW	Sh F	H Prg	Brd Bk	SC	\$G	Carc Idx
EPDs	13.54	0.01	-0.12	0.01	0.30	18.56	10
Accuracy	0.27	0.21	0.11	0.10	0.25		

Own daughter of Red Doc Sancho 3318, with Harris Farms genetics on the bottom side. Check out her 5 traits in the Top 15%! Sells open.



Sancho 3318 (Reg.# 20133647) sire of Lots 7, 31 and 162.

LOT

163



GRAY OAKS 743

Gray Oaks Farm

20173691 | 743 | 4/12/2017 | Bred Heifer

GRAY OAKS BANDIT 152

1295578

(O.U.) SUPER STAR 33/5

FLYING C'S 22/3

W H CREEL 344

GRAY OAKS 002

1289439

CHEEKS 73/0

HATCHET 150
YELLOW PINES FARM 42

STONE COLD 21/1
FLYING C'S 34/7

CREEL 20
W H CREEL 894

POLLED TOP CAT 650
SCROGGINS 6073

	BW	WW	YW	Milk	T MAT	REA	Marb	FAT
EPDs	1.78	8.34	8.44	-3.35	0.82	0.10	0.07	0.01
Accuracy	0.37	0.38	0.31	0.21	—	0.21	0.21	0.31

	HCW	Sh F	H Prg	Brd Bk	SC	\$G	Carc Idx
EPDs	9.25	0.01	0.02	-0.06	0.36	9.24	10
Accuracy	0.27	0.21	0.10	0.10	0.23		

Another daughter of Bandit who goes back to National Champions SuperStar and Hatchet. Check out her Top 3% for Marbling! Sells exposed to Dinero's Deal from 1/1/19 to 4/15/19, then with Viper 400 to sale date. Pregnancy status announced at sale.

LOT

164



GRAY OAKS 708

Gray Oaks Farm

20173694 | 708 | 2/18/2017 | Bred Heifer

GRAY OAKS BANDIT 152

1295578

(O.U.) SUPER STAR 33/5

FLYING C'S 22/3
STONE COLD 21/1
FLYING C'S 34/7

HARRIS FARMS 3/4

HARRIS FARMS 109

1281960

HINNANT & FULBRIGHT 7/2
HINNANT-FULBRIGHT RA BULL
HINNANT-FULBRIGHT FOUNDATION

HATCHET 150
YELLOW PINES FARM 42

STONE COLD 21/1
FLYING C'S 34/7

ADIOS 99/126
FIVE OAKS 33/0

	BW	WW	YW	Milk	T MAT	REA	Marb	FAT
EPDs	0.07	4.21	7.05	1.69	3.79	0.08	0.01	0.00
Accuracy	0.37	0.37	0.30	0.21	—	0.20	0.21	0.31

	HCW	Sh F	H Prg	Brd Bk	SC	\$G	Carc Idx
EPDs	4.87	-0.01	0.05	-0.06	0.37	6.62	9
Accuracy	0.26	0.21	0.10	0.10	0.23		

Another daughter of Bandit who goes back to National Champions SuperStar and Hatchet. Check out her balanced EPDs – 5 traits in the Top 25%! Sells exposed to Dinero's Deal from 1/1/19 to 4/15/19, then with Viper 400 to sale date. Pregnancy status announced at sale.

LOT

165



GRAY OAKS 722

Gray Oaks Farm

20173692 | 722 | 2/5/2017 | Bred Heifer

GRAY OAKS BANDIT 152

1295578

(O.U.) SUPER STAR 33/5

FLYING C'S 22/3

YUMA (SON OF THE CHIEF) 114

PF'S RENA 630

1281960

GRAY OAKS 452

HATCHET 150
YELLOW PINES FARM 42

STONE COLD 21/1
FLYING C'S 34/7

POLLED CHIEF 1/4
GRAY OAKS 324

BLACK WARRIOR FARM 1088
GRAY OAKS 137

	BW	WW	YW	Milk	T MAT	REA	Marb	FAT
EPDs	2.33	13.68	15.87	-2.91	3.94	0.12	0.04	0.00
Accuracy	0.37	0.38	0.31	0.21	—	0.21	0.21	0.31

	HCW	Sh F	H Prg	Brd Bk	SC	\$G	Carc Idx
EPDs	14.33	-0.02	0.04	-0.29	0.32	16.58	10
Accuracy	0.27	0.21	0.10	0.10	0.23		

Bandit daughter on the top side, goes back to Yuma and Polled Chief on the dam's side. Don't miss her excellent EPDs – Top 10% in 6 traits including Marbling! Sells exposed to Dinero's Deal from 1/1/19 to 4/15/19, then with Viper 400 to sale date. Pregnancy status announced at sale.

GRAY OAKS FARM FEMALE OFFERING



on the dam's side. Check out her 4 traits in the Top 10%, including a Marbling trait in the Top 2%! Sells exposed to Dinero's Deal from 1/1/19 to 4/15/19, then with Viper 400 to sale date. Pregnancy status announced at sale.

LOT

166



GRAY OAKS 741

Gray Oaks Farm

20173700 | 741 | 5/2/2017 | Bred Heifer

GRAY OAKS BANDIT 152

1295578

(O.U.) SUPER STAR 33/5

FLYING C'S 22/3

YUMA (SON OF THE CHIEF) 114

GRAY OAKS 313

HATCHET 150
YELLOW PINES FARM 42
STONE COLD 21/1
FLYING C'S 34/7
POLLED CHIEF 1/4
GRAY OAKS 324
SLAMMER 710
ET 160

	BW	WW	YW	Milk	T MAT	REA	Marb	FAT
EPDs	1.66	11.38	14.29	0.82	6.51	0.11	0.09	0.01
Accuracy	0.37	0.39	0.31	0.21	—	0.21	0.21	0.32

	HCW	Sh F	H Prg	Brd Bk	SC	\$G	Carc Idx
EPDs	12.10	0.00	0.10	0.07	0.33	14.56	10
Accuracy	0.27	0.21	0.10	0.10	0.23		

Bandit daughter on the top side and goes back to Yuma and Polled Chief

LOT

167



GRAY OAKS 742

Gray Oaks Farm

20173701 | 742 | 5/3/2017 | Bred Heifer

GRAY OAKS BANDIT 152

1295578

(O.U.) SUPER STAR 33/5

FLYING C'S 22/3

CIRCLE A STARKY 19/5

CIRCLE A MAUDE 119

1285300

PG W33 6008 (ET)

HATCHET 150
YELLOW PINES FARM 42
STONE COLD 21/1
FLYING C'S 34/7
MC SCARLET'S BRAVO S23/5
CIRCLE A FAITH 112
WHAT A BULL W33
BRIGGS 079/3

	BW	WW	YW	Milk	T MAT	REA	Marb	FAT
EPDs	2.49	16.18	21.25	0.40	8.49	0.15	-0.01	0.01
Accuracy	0.36	0.37	0.30	0.22	—	0.20	0.21	0.31

	HCW	Sh F	H Prg	Brd Bk	SC	\$G	Carc Idx
EPDs	17.87	0.00	-0.12	-0.20	0.29	21.34	10
Accuracy	0.26	0.21	0.10	0.10	0.23		

Daughter of Bandit who goes back to National Champions SuperStar and Hatchet, with Circle A Farm genetics on the bottom side. She exhibits 4 traits in the Top 5%. Sells exposed to Dinero's Deal from 1/1/19 to 4/15/19, then with Viper 400 to sale date. Pregnancy status announced at sale.



LOT

168



GRAY OAKS 782

Gray Oaks Farm

20173698 | 782 | 6/6/2017 | Bred Heifer

GRAY OAKS BANDIT 152

1295578

(O.U.) SUPER STAR 33/5

FLYING C'S 22/3

HARRIS FARMS 3/4

HARRIS FARMS 349

1282779

HARRIS FARM 612

HATCHET 150
YELLOW PINES FARM 42
STONE COLD 21/1
FLYING C'S 34/7
ADIOS 99/126
FIVE OAKS 33/0
RED ANGUS
MULTIPLE DAM

	BW	WW	YW	Milk	T MAT	REA	Marb	FAT
EPDs	1.16	9.26	13.01	1.02	5.65	0.17	0.05	0.01
Accuracy	0.37	0.37	0.30	0.21	—	0.20	0.21	0.31

	HCW	Sh F	H Prg	Brd Bk	SC	\$G	Carc Idx
EPDs	11.23	-0.01	-0.13	-0.06	0.38	12.81	10
Accuracy	0.26	0.21	0.10	0.10	0.23		

Bandit daughter with Harris genetics on the bottom side. 5 traits in the Top 15% with Marbling in the Top 5%! Sells exposed to Dinero's Deal from 1/1/19 to 4/15/19, then with Viper 400 to sale date. Pregnancy status announced at sale.



GRAY OAKS FARM FEMALE OFFERING

LOT

169



SHAMPAIN 97

Gray Oaks Farm

20171724 | 97/7 | 2/16/2017 | Bred Heifer

GRAY OAKS 017

1289451

DSR 1289

20125831

W H CREEL 344
CB 1331
PCR AVALANCHE 95/5 (ET)
DSR MISS WANDA 0T89

CREEL 20
W H CREEL 894
GRIZZLY 3308
DCR 612
WENDT **ALL STAR 5876**
PCR WINCHESTER 0303
TOP GUN 244
SCC 7B2

	BW	WW	YW	Milk	T MAT	REA	Marb	FAT
EPDs	1.25	11.18	16.27	4.05	9.64	0.17	0.01	0.01
Accuracy	0.36	0.34	0.30	0.22	—	0.21	0.21	0.31

	HCW	Sh F	H Prg	Brd Bk	SC	\$G	Carc Idx
EPDs	13.12	-0.02	0.20	-0.23	0.12	15.86	10
Accuracy	0.26	0.21	0.11	0.10	0.23		

A daughter of GO 017, she goes back to Top Gun on the bottom side. Sells bred to Dinero's Deal. Could calve before sale.



Lot 169

LOT

170



GRAY OAKS 781

Gray Oaks Farm

20173693 | 781 | 6/1/2017 | Bred Heifer

GRAY OAKS BANDIT 152

1295578

CB 111

20110011

(O.U.) SUPER STAR 33/5
FLYING C'S 22/3
CREEL XMAS CHUNK 810
HARRIS FARMS 909

HATCHET 150
YELLOW PINES FARM 42
STONE COLD 21/1
FLYING C'S 34/7
LIBERTY RANCH 53/414
W H CREEL 540
HARRIS FARMS 3/4
1241 30/5

	BW	WW	YW	Milk	T MAT	REA	Marb	FAT
EPDs	1.88	17.02	25.34	0.39	8.90	0.24	0.01	0.01
Accuracy	0.37	0.37	0.30	0.21	—	0.20	0.21	0.31

	HCW	Sh F	H Prg	Brd Bk	SC	\$G	Carc Idx
EPDs	19.80	0.00	-0.06	-0.25	0.44	24.55	10
Accuracy	0.26	0.21	0.11	0.10	0.23		

Bandit daughter with Harris and Cotton Branch genetics on her dam's side. She has 4 traits in the Top 4%, including a positive Marbling trait. Sells exposed to Dinero's Deal from 1/1/19 to 4/15/19, then with Viper 400 to sale date. Pregnancy status announced at sale.

LOT

171



PF'S BUNNY

Gray Oaks Farm

20174801 | 44A7 | 6/9/2017 | Bred Heifer

GRAY OAKS 362

20134669

TF 364

201301000054

POLLED RINGER
GRAY OAKS 458
TF 7132
MISS GRANDVIEW 9133

SHAKER'S SIERRA 10/4
INDIAN PRINCESS 756
POLLED CHIEF 1/4
GRAY OAKS 533
TF 219
TF 3160
BRIGGS 021/5
PG/SF LUCKY'S 420-6

	BW	WW	YW	Milk	T MAT	REA	Marb	FAT
EPDs	0.99	12.95	15.22	4.53	11.01	0.10	0.03	-0.01
Accuracy	0.33	0.33	0.29	0.19	—	0.20	0.20	0.30

	HCW	Sh F	H Prg	Brd Bk	SC	\$G	Carc Idx
EPDs	10.96	0.04	-0.30	-0.17	0.16	15.84	10
Accuracy	0.25	0.21	0.11	0.10	0.22		

Daughter of GO 362, with Tinney Farms and Grandview genetics on the dam's side. Look at her impressive, balanced EPDs – 7 traits in the Top 10% including Marbling! Sells exposed to Dinero's Deal from 1/1/19 to 4/15/19, then with Viper 400 to sale date. Pregnancy status announced at sale.



Lot 172

LOT

172



GRAY OAKS 550

Gray Oaks Farm

20150420 | 550 | 6/10/2015 | Pair w/ Heifer Calf

TONY 108

1291118

GRAY OAKS 235

201201002095

ZEB 802
DB 18/2
GRAY OAKS 723
CA 505

LIBERTY RANCH 63/11F
LIBERTY RANCH 53/324
HATCHET 150
FANCY 72/6
TYPHOON 368/0
CHEEKS 73/0
CORPORON BRUTIS S 589/97
2M 23/8

	BW	WW	YW	Milk	T MAT	REA	Marb	FAT
EPDs	1.29	5.85	7.26	-2.73	0.19	0.02	-0.01	-0.01
Accuracy	0.32	0.33	0.31	0.21	—	0.22	0.23	0.33

	HCW	Sh F	H Prg	Brd Bk	SC	\$G	Carc Idx
EPDs	6.37	0.04	0.06	-0.12	0.37	7.42	8
Accuracy	0.26	0.23	0.11	0.11	0.24		

Polled Tony 108 daughter. Sells with heifer calf ID 928, born 4/8/19 and sired by GO 644, a son of Sancho 3318. Cow sells exposed back to Viper 400.

GRAY OAKS FARM FEMALE OFFERING

LOT
173

GRAY OAKS 600

Gray Oaks Farm

20160236 | 600 | 2/15/2016 | Pair w/ Heifer Calf

FC PISTOL 28/0
1290034

GUNSLINGER 13/5

WR MAVERICK N113 ET
FAYE 10/2

HOLLY 20/3

STONE COLD 21/1
COSSEY 13/9

HARRIS FARMS 59/2
20120071

JP COUCH 306C

FIVE OAKS 005
JP COUCH 125C
QT CINNAMON BRAZOS 10/3
QT JOSIE 04/4

QT KATARINA 14/6

	BW	WW	YW	Milk	T MAT	REA	Marb	FAT
EPDs	2.13	17.38	22.75	2.28	10.97	0.07	-0.03	0.00
Accuracy	0.39	0.37	0.35	0.23	—	0.26	0.27	0.36

	HCW	Sh F	H Prg	Brd Bk	SC	\$G	Carc Idx
EPDs	17.22	0.00	-0.07	-0.12	0.61	22.88	9
Accuracy	0.29	0.23	0.11	0.11	0.29		

An own daughter of FC Pistol 28/0, she has 4 traits in the Top 3% of the breed. Sells with heifer calf ID 929, born 4/2/19 and sired by GO 644, a son of Sancho 3318. Cow sells exposed back to Viper 400.



Hatchet on the top side and Polled Chief on the Dams side. 615 has 4 traits in the Top 5%. Sells with bull calf ID 919, born 3/13/ and sired by GO 644, a son of Sancho 3318. Cow sells exposed back to Viper 400.

LOT
174

GRAY OAKS 457

Gray Oaks Farm

20144108 | 457 | 12/25/2014 | Pair w/ Heifer Calf

CIRCLE A IRONMAN 611
1296491

MC SCARLET'S BRAVO S23/5

DCR 604
SCARLET 24/9

PG W33 6008 (ET)

WHAT A BULL W33
BRIGGS 079/3

CIRCLE A MAUDE 119
1285300

CIRCLE A STARKY 19/5

MC SCARLET'S BRAVO S23/5
CIRCLE A FAITH 112
WHAT A BULL W33
BRIGGS 079/3

PG W33 6008 (ET)

	BW	WW	YW	Milk	T MAT	REA	Marb	FAT
EPDs	0.83	2.08	1.66	0.62	1.66	-0.08	-0.08	0.00
Accuracy	0.28	0.30	0.29	0.21	—	0.20	0.21	0.32

	HCW	Sh F	H Prg	Brd Bk	SC	\$G	Carc Idx
EPDs	1.44	0.02	-0.20	-0.07	0.09	1.99	1
Accuracy	0.25	0.23	0.11	0.11	0.23		

Line-bred Circle A Farm female goes back to National Champions Scarlet and Bravo. Sells with heifer calf ID 926, born 4/4/19 and sired by Viper 400. Cow sells exposed back the same way.

LOT
175

GRAY OAKS 615

Gray Oaks Farm

20162528 | 615 | 2/4/2016 | Pair w/ Bull Calf

GRAY OAKS BANDIT 152
1295578

(O.U.) SUPER STAR 33/5

HATCHET 150
YELLOW PINES FARM 42

FLYING C'S 22/3

STONE COLD 21/1
FLYING C'S 34/7

GRAY OAKS 952
1282685

W H CREEL 344

CREEL 20
W H CREEL 894

GRAY OAKS 302

POLLED CHIEF 1/4
GRAY OAKS 432

	BW	WW	YW	Milk	T MAT	REA	Marb	FAT
EPDs	2.10	13.15	15.87	-0.63	5.95	0.16	0.06	0.00
Accuracy	0.38	0.39	0.32	0.21	—	0.22	0.22	0.32

	HCW	Sh F	H Prg	Brd Bk	SC	\$G	Carc Idx
EPDs	13.80	0.02	0.03	-0.30	0.27	16.36	10
Accuracy	0.28	0.23	0.11	0.11	0.24		

Daughter of Bandit that goes back to National Champions SuperStar and Hatchet. This female is in the Top 3% in 5 traits. Sells with bull calf ID 930, born 4/11/19 and sired by GO 644, a son of Sancho 3318. Cow sells exposed back to Viper 400.

LOT
176

GRAY OAKS 541

Gray Oaks Farm

20150414 | 541 | 5/7/2015 | Pair w/ Bull Calf

GRAY OAKS BANDIT 152
1295578

(O.U.) SUPER STAR 33/5

HATCHET 150
YELLOW PINES FARM 42

FLYING C'S 22/3

STONE COLD 21/1
FLYING C'S 34/7

FEISTY 22/9
1282268

KILGORE 44/6

CHEEKS 2/4/0
KILGORE 44/1

PEANUT 22/7

25 RANCH 5224
ROCKIN L RANCH 90

	BW	WW	YW	Milk	T MAT	REA	Marb	FAT
EPDs	1.78	14.89	21.39	-5.01	2.43	0.23	0.00	0.01
Accuracy	0.31	0.33	0.30	0.20	—	0.21	0.00	0.32

	HCW	Sh F	H Prg	Brd Bk	SC	\$G	Carc Idx
EPDs	16.61	0.00	0.17	0.13	0.63	20.92	10
Accuracy	0.26	0.23	0.11	0.11	0.24		

Another daughter of Bandit that goes back to National Champions SuperStar and Hatchet. This female is in the Top 3% in 5 traits. Sells with bull calf ID 930, born 4/11/19 and sired by GO 644, a son of Sancho 3318. Cow sells exposed back to Viper 400.

LOT
177

CB 419

Gray Oaks Farm

20140096 | 419 | 4/17/2014 | Pair w/ Bull Calf

ZEB 802
1274762

LIBERTY RANCH 63/11F

CHRISTMAS 59
DCR 409

LIBERTY RANCH 53/324

WR CHALLENGER L230
GRAY OAKS 324

CB 511
20110015

CREEL XMAS CHUNK 810

LIBERTY RANCH 53/414
W H CREEL 540

HINNANT & FULBRIGHT 7/2

HINNANT-FULBRIGHT RA BULL
HINNANT-FULBRIGHT FOUNDATION

	BW	WW	YW	Milk	T MAT	REA	Marb	FAT
EPDs	1.51	9.44	14.61	1.10	5.82	0.07	-0.01	-0.01
Accuracy	0.38	0.39	0.33	0.28	—	0.23	0.23	0.34

	HCW	Sh F	H Prg	Brd Bk	SC	\$G	Carc Idx
EPDs	10.59	-0.01	-0.03	-0.16	0.14	14.01	9
Accuracy	0.28	0.23	0.11	0.11	0.25		

A Zeb 802 daughter that sells with bull calf ID 925, born 4/4/19 and sired by GO 644, a son of Sancho 3318. Cow sells exposed back to Viper 400.

GRAY OAKS FARM FEMALE OFFERING



LOT

178

CB 418

Gray Oaks Farm

20140095 | 418 | 4/11/2014 | Pair w/ Bull Calf

ZEB 802

1274762

LIBERTY RANCH 63/11F

CHRISTMAS 59
DCR 409

LIBERTY RANCH 53/324

WR CHALLENGER L230
GRAY OAKS 324

CREELE XMAS CHUNK 810

LIBERTY RANCH 53/414
W H CREELE 540

CB 111

20110011

HARRIS FARMS 909

HARRIS FARMS 3/4
1241 30/5

	BW	WW	YW	Milk	T MAT	REA	Marb	FAT
EPDs	1.77	11.16	17.10	-1.40	4.18	0.11	-0.01	0.00
Accuracy	0.38	0.38	0.32	0.28	—	0.22	0.22	0.33

	HCW	Sh F	H Prg	Brd Bk	SC	\$G	Carc Idx
EPDs	13.62	-0.03	-0.04	-0.02	0.27	16.43	10
Accuracy	0.28	0.23	0.11	0.11	0.23		

This Zeb 802 daughter has 4 traits in the Top 10%. Sells with bull calf ID 935, born 4/22/19 and sired by Viper 400. Cow sells exposed back the same way.



LOT

179

HARRIS FARMS 184D

Gray Oaks Farm

20165814 | 184D | 5/11/2016 | Pair w/ Bull Calf

HARCO 1323

12932359

HARCO T956 (ET)

PCR AVALANCHE 95/5 (ET)

HARCO T720 (ET)

MISS WINROCK M253

WENDT **ALL STAR 5876**

HARCO T142/5 (ET) T142/5

BRIGGS 031/6

KJ PHILLIP'S POCKET 3/1

DOUBLE E FARMS 245

BRIGGS 014/11

1295078

BRIGGS 118/5

CB 8333

BRIGGS 005/1

	BW	WW	YW	Milk	T MAT	REA	Marb	FAT
EPDs	0.59	7.77	20.27	-3.15	0.73	0.11	0.02	0.01
Accuracy	0.39	0.41	0.40	0.26	—	0.30	0.32	0.42

	HCW	Sh F	H Prg	Brd Bk	SC	\$G	Carc Idx
EPDs	12.38	0.01	-0.10	-0.18	0.40	17.30	10
Accuracy	0.31	0.23	0.12	0.11	0.31		

This female combines the best of Harris Farms and Briggs Ranches genetics. She has 4 traits in the Top 5%. She sells with herd sire prospect bull calf ID 932 born 4/2/19 and sired by Harris Guns Up. Cow sells exposed back to Viper 400.



LOT

180

GRAY OAKS 524

Gray Oaks Farm

20150404 | 524 | 2/24/2015 | Pair w/ Bull Calf

TONY 108

1291118

ZEB 802

LIBERTY RANCH 63/11F

DB 18/2

LIBERTY RANCH 53/324

HATCHET 150

FANCY 72/6

YUMA (SON OF THE CHIEF) 114

POLLED CHIEF 1/4

GRAY OAKS 324

GRAY OAKS 730

1295078

CROSS 408

SANTA GERTRUDIS

SANTA GERTRUDIS

	BW	WW	YW	Milk	T MAT	REA	Marb	FAT
EPDs	1.24	6.80	7.56	1.33	4.73	0.03	0.02	-0.01
Accuracy	0.32	0.34	0.31	0.22	—	0.22	0.23	0.33

	HCW	Sh F	H Prg	Brd Bk	SC	\$G	Carc Idx
EPDs	6.87	0.02	0.12	-0.04	0.28	8.01	10
Accuracy	0.26	0.23	0.11	0.11	0.23		

A Tony 108 daughter on the top side, she goes back to Yuma and Polled Chief on the dam's side. She has 6 traits in the Top 20% of the breed! Sells with bull calf ID 936, born 3/12/19 and sired by Viper 400. Cow sells exposed back to Viper 400.



LOT

181

GRAY OAKS 611

Gray Oaks Farm

20162524 | 611 | 1/31/2016 | Pair w/ Bull Calf

GRAY OAKS BANDIT 152

1295578

(O.U.) SUPER STAR 33/5

HATCHET 150

FLYING C'S 22/3

YELLOW PINES FARM 42

STONE COLD 21/1

FLYING C'S 34/7

KUBECKA 47

SHERIFF 5577

PEACOCK 61

TF 708

1262825

TF 486

MESQUITE 983

BRIGGS 505/94

	BW	WW	YW	Milk	T MAT	REA	Marb	FAT
EPDs	1.56	9.58	12.57	-1.24	3.55	0.10	0.01	0.01
Accuracy	0.39	0.39	0.32	0.22	—	0.22	0.23	0.33

	HCW	Sh F	H Prg	Brd Bk	SC	\$G	Carc Idx
EPDs	10.50	0.00	0.19	-0.11	0.19	12.63	10
Accuracy	0.28	0.23	0.11	0.11	0.24		

A daughter of Bandit that goes back to National Champions SuperStar and Hatchet on the top side, with Tinney Farms genetics on the bottom side. Sells with bull calf ID 936, born 4/25/19 and sired by GO 644, our Sancho 3318 son. Cow sells exposed back to Viper 400.

TINNEY FARMS FEMALE OFFERING

LOT
182



EMBRYO PACKAGES

Tinney Farms

Don't miss this opportunity to add these elite matings to your embryo inventory.

5 embryos per lot. Guaranteed 2 pregnancies a when performed by certified ET technician agreed upon by buyer and Tinney Farms.

A. TF 156 (Reg.# 1220832) x King Ranch 97/10

	BW	WW	YW	Milk	T MAT	REA	Marb	FAT	HCW	Sh F	H Prg	Brd Bk	SC	\$G	Carc Idx
Projected EPDs	0.80	13.92	19.72	-8.29	-1.33	0.31	0.06	0.00	13.20	0.03	-0.42	0.18	-0.16	19.37	10

B. 7019D4 (Reg.# 20161546) x Genesis 75/3

	BW	WW	YW	Milk	T MAT	REA	Marb	FAT	HCW	Sh F	H Prg	Brd Bk	SC	\$G	Carc Idx
Projected EPDs	-0.55	7.79	16.48	0.47	4.36	0.18	0.16	0.01	9.57	-0.02	-0.11	-0.13	0.55	14.65	10

C. Creech 155-6 (Reg.# 20166406) X Masterpiece 101.

	BW	WW	YW	Milk	T MAT	REA	Marb	FAT	HCW	Sh F	H Prg	Brd Bk	SC	\$G	Carc Idx
Projected EPDs	0.37	6.44	10.49	-0.62	2.60	0.04	0.00	0.01	6.60	-0.01	0.09	0.06	0.53	9.92	7



LOT
183



TF 427

Tinney Farms

20140371 | 427 | 1/29/2014 | Donor

TF 0150
1293873

BRIGGS 567/5

HARRIS FARMS T004/8 (ET)

TF 217

PG 1/0'S 57-4

WENDT 6240

WENDT 8018

CHAPS 372

TINNEY FARMS 066

HATCHET 150

TINNEY FARMS 456

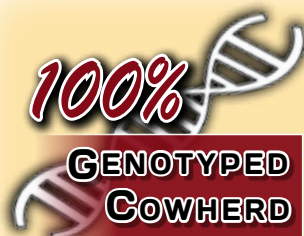
COSGROVE'S POLLED 1/0

RBC IRENE 921

	BW	WW	YW	Milk	T MAT	REA	Marb	FAT
EPDs	1.00	8.93	15.05	-7.85	-3.39	0.11	0.00	0.00
Accuracy	0.36	0.33	0.32	0.25	—	0.21	0.22	0.33

	HCW	Sh F	H Prg	Brd Bk	SC	\$G	Carc Idx
EPDs	10.82	0.00	-0.15	0.14	0.13	14.10	10
Accuracy	0.27	0.23	0.11	0.11	0.24		

This female combines Briggs Ranches, Harris Farms and Wendt Genetics. She has 5 traits in the breed's Top 10% including Top 4% in BBK. Sells AI'ed on 5/11/19 to 2017 National Champion Masterpiece and later pasture exposed from 5/25/19 to 8/1/19 to TF 1167 and WRF Thor. safe in calf to National Champion Masterpiece 101.



Tinney Farms is proud to be one of the few 100% genotyped herds in the Santa Gertrudis breed! We strive to be on the cutting edge of genetic technology to provide our customers all the data and information needed to make their selections with confidence! Several Tinney Farms females are exposed to multiple bulls. That said, Tinney Farms will cover the cost of DNA parentage testing on these females.

Sincerely,

Arlin Taylor, Tinney Farms Manager



TINNEY FARM FEMALE OFFERING



Lot 184



DOUBLE CC 12/44

Tinney Farms

20125925 | 12/44 | 10/23/2012 | Pair w/ Heifer Calf

HARRIS FARMS 160/7
1269273

HARRIS FARMS 56/3

SR 302

DOUBLE C 1-1
20018508

SANTA GERTRUDIS MD

SANTA GERTRUDIS MS

ADIOS 99/126
BRIGGS 061/97
SR CLAW 905
ROCK CRK TARITA 1/9
SANTA GERTRUDIS MS
SANTA GERTRUDIS MD
SANTA GERTRUDIS MS
SANTA GERTRUDIS MD

	BW	WW	YW	Milk	T MAT	REA	Marb	FAT
EPDs	1.97	10.14	12.47	-2.68	2.40	0.07	0.02	0.00
Accuracy	0.30	0.30	0.30	0.18	—	0.21	0.22	0.32

	HCW	Sh F	H Prg	Brd Bk	SC	\$G	Carc Idx
EPDs	10.83	-0.01	-0.16	0.09	0.02	12.79	10
Accuracy	0.25	0.23	0.11	0.11	0.24		

This proven producer combines Harris Farms and Double C Farms genetics with a very balanced set of EPDs – 6 traits in the breed's Top 20%. Sells with heifer calf ID 906 born 2/26/19 and sired by Pistolero. Cow sells AI'd to RDF CA Mateo 7238 on 5/11/19 and later pasture exposed from 5/25/19 to 8/1/19 to Masterpiece and Creech 183-7.



5-E DAISEY

Tinney Farms

20155740 | 88 | 11/26/2015 | Pair w/ Heifer Calf

5-E'S INTEGRITY 350
1292432

MAGNUM 357

BRIGGS 019/5

5-E HONEY SUCKLE

201101005672

5-E'S MAGNUM'S BONFIRE 148/6

5-E TIFFANY 66/4

COLT 45/7
MCTYRE 60/7
CB 8333
BRIGGS 067/00
MAGNUM 357
5-E SAPPHIRE TWO 48/4
D-H EL BANDIT 782/1
5-E'S COVER-GIRL 999

	BW	WW	YW	Milk	T MAT	REA	Marb	FAT
EPDs	0.94	9.25	10.28	5.09	9.71	0.12	0.02	0.01
Accuracy	0.28	0.31	0.30	0.19	—	0.21	0.22	0.32

	HCW	Sh F	H Prg	Brd Bk	SC	\$G	Carc Idx
EPDs	8.90	-0.02	0.01	0.12	0.09	10.89	10
Accuracy	0.25	0.23	0.11	0.11	0.24		



Lot 185

An own daughter of 2014 National Champion Integrity, this female's EPD traits across the board are very impressive with 7 traits, including marbling, in the breed's Top 15%! Sells with heifer calf ID 922 born 3/29/19 and sired by Pistolero. Cow sells exposed to Copperhead 5027 27E1 and TF 4102.

TINNEY FARMS FEMALE OFFERING

LOT

186



TF657

Tinney Farms

20165518 | 657 | 11/17/2016 | Pair w/ Heifer Calf

TF ET065

20100019

CEDAR CREST 23/7

1265667

HATCHET 150

HANNA MONTANA 607

COSGROVE 9/3

CEDAR CREST 23/5

BULL DOG 236

LUCY 157

RICOCHET ST2/0

TINNEY FARMS 066

COSGROVE'S 6/9

COSGROVES POLLPERFECTION 99/0

COSGROVE 03 03/9

COSGROVE RANCHES 90/0

	BW	WW	YW	Milk	T MAT	REA	Marb	FAT
EPDs	1.22	10.89	14.66	-1.21	4.24	0.07	-0.03	0.00
Accuracy	0.35	0.36	0.31	0.21	—	0.22	0.22	0.32

	HCW	Sh F	H Prg	Brd Bk	SC	\$G	Carc Idx
EPDs	11.35	0.02	-0.09	-0.20	0.14	14.62	8
Accuracy	0.26	0.21	0.11	0.10	0.24		

Legendary Hatchet granddaughter, and her dam goes back to Cosgrove breeding. She exhibits 4 traits in the Top 15%. Sells with heifer calf ID 953 born 4/9/19 and sired by 5 Bar E Rushmore 141. Cow sells exposed to TF 1167 and WRF Thor.



LOT

187



TF 477

Tinney Farms

20144254 | 477 | 4/10/2014 | Pair w/ Heifer Calf

TF 909

1275662

SMITH FARM 104

1248766

COPPERHEAD 214

LIBERTY RANCH 53/110

YELLOW PINES MONTEZUMA 21

BIRDIE 712

BIG ORANGE EXPRESS 42/7

TINNEY 923

WR CHALLENGER L230

TURKEY TROT RANCH 33/110

WENDT GERONIMO 3983

DOUBLE C FARMS 3/4

LEADER 456

LAZY E STAR 5 3155

	BW	WW	YW	Milk	T MAT	REA	Marb	FAT
EPDs	1.39	19.04	31.16	5.07	14.59	0.33	-0.03	0.00
Accuracy	0.39	0.35	0.31	0.31	—	0.24	0.26	0.36

	HCW	Sh F	H Prg	Brd Bk	SC	\$G	Carc Idx
EPDs	22.61	-0.04	-0.22	0.05	0.26	29.42	10
Accuracy	0.28	0.23	0.11	0.11	0.27		

An own daughter of TF 909 going back to TF Copperhead, this young female has 5 traits in the breed's Top 5%. Sells with heifer calf ID 924 born 3/30/19 and sired by Masterpiece. Cow sells exposed to Masterpiece and Creech 183-7.



LOT

188



WRF SAMMY

Tinney Farms

20170026 | LC 509 | 1/25/2017 | Pair w/ Heifer Calf

TF 484

20143984

GRAY OAKS 339

20130635

TF 909

MCCARTER 716

POLLED CHIEF 508

GRAY OAKS 214

COPPERHEAD 214

LIBERTY RANCH 53/110

RITZ CRACKER 100/9

MCCARTER 75/1

POLLED CHIEF 1/4

SIZEMORE 808/5

SLAMMER 710

GRAY OAKS 427

	BW	WW	YW	Milk	T MAT	REA	Marb	FAT
EPDs	-0.10	0.56	1.69	1.98	2.26	-0.02	0.00	0.00
Accuracy	0.33	0.31	0.30	0.20	—	0.20	0.21	0.32

	HCW	Sh F	H Prg	Brd Bk	SC	\$G	Carc Idx
EPDs	0.63	0.00	-0.16	0.04	0.10	1.40	4
Accuracy	0.25	0.21	0.10	0.10	0.24		

Granddaughter of TF 909 and her dam goes back to Polled Chief. Sells with heifer calf ID 905 born 2/26/19 and sired by Roberto 915C8. Cow sells A/d to Masterpiece on 5/11/19 and later pasture exposed 5/25/19-8/1/19 to TF 1167 and WRF Thor.

LOT

189



BRIGGS 062/13

Tinney Farms

20132205 | 062/13 | 2/25/2013 | Pair w/ Heifer Calf

BRIGGS 030/5

1252446

BRIGGS 153/3

1240644

PARTNER 5273

BRIGGS 016/00

MR CVF 7179/M

BRIGGS 556/00

KUBECKA'S MR BUCKEYE 930

NINE BAR 82

POWERSTOCK 668/6

BRIGGS 057/95

SONS OF WACO 500/94

CVF-BERTHA M/441

SAN ROQUE DIVISION

WENDT 6636

	BW	WW	YW	Milk	T MAT	REA	Marb	FAT
EPDs	0.63	6.42	14.97	3.52	6.73	-0.11	-0.06	0.00
Accuracy	0.37	0.44	0.38	0.37	—	0.28	0.29	0.38

	HCW	Sh F	H Prg	Brd Bk	SC	\$G	Carc Idx
EPDs	6.79	0.03	0.09	-0.11	0.10	13.04	1
Accuracy	0.31	0.24	0.16	0.16	0.30		

This female provides Briggs Ranches genetics going back to Partner on the top side. Sells with heifer calf ID 918 born 3/25/19 and sired by Pistolero. Cow sells exposed to Copperhead 5027 27E1 and TF 4102.

TINNEY FARM FEMALE OFFERING

LOT 190 **HT** **23/14**
Tinney Farms
 20140860 | 23/14 | 2/3/2014 | Pair w/ Heifer Calf

TF 826
 1268127

RR SHELBY 2 151
 1297128

SOMBRERO 394
 ROSETTA 180
 LF MERCURY 101
 NAF COWGIRL 9C10

HATCHET 150
 WENDT 6539
 PECAN HILL 56/98
 PRUETT 607
 MARS 1/91
 QUEEN JEN 310/6
 MC CHATTANOOGA 151/2
 CSC COWGIRL 10-5

	BW	WW	YW	Milk	T MAT	REA	Marb	FAT
EPDs	0.69	15.20	19.00	1.95	9.55	0.13	-0.03	0.00
Accuracy	0.16	0.17	0.09	0.07	—	0.04	0.03	0.04

	HCW	Sh F	H Prg	Brd Bk	SC	\$G	Carc Idx
EPDs	12.71	0.02	-0.11	0.02	0.17	19.38	9
Accuracy	0.07	0.01	0.00	0.00	0.01		

Granddaughter of National Champion Sombbrero, with positive performance numbers. Sells with heifer calf ID 951 born 6/17/19 and sired by Rebel Ridge 112. Cow sells exposed to Copperhead 5027 27E1 and TF 4102.



back to Tonka and Hatchet on the dam's side. Impressive consistent numbers with 7 traits in the breed's Top 15%. Sells AI'd to Navidad 8/5 on 5/11/19 and later pasture exposed on 5/25/19 to 8/1/19 to Roberto 915C6, TF 811 (Masterpiece son) and WRF Arlo (Hatchet x Copperhead genetics).



LOT 191 **HT** **TF 760**
Tinney Farms
 20175264 | 760 | 1/24/2018 | Bred Heifer

CIRCLE A REAL DEAL
 201201001225

GF FF 787
 1268479

MR. DOUBLE TT ERVIN 109/8
 TIDWELL 250
 TF 395
 MISS GRANDVIEW 087

MR DOUBLE TT GUS 112
 MISS DOUBLE TT 251
 WR LITTLE ROCK G139
 CLASSY'S BEE 755
 HATCHET 150
 SUGAR 97/006
 GRANDVIEW TREND 522
 MISS GRANDVIEW 550

	BW	WW	YW	Milk	T MAT	REA	Marb	FAT
EPDs	1.95	21.14	26.31	0.53	11.09	0.18	-0.05	0.00
Accuracy	0.37	0.38	0.38	0.21	—	0.22	0.22	0.32

	HCW	Sh F	H Prg	Brd Bk	SC	\$G	Carc Idx
EPDs	19.91	-0.01	-0.29	0.12	0.02	26.87	10
Accuracy	0.28	0.21	0.10	0.10	0.24		

Daughter of 2015 National Champion Real Deal on the top side and goes back to Tonka and Hatchet on the dam's side. Impressive consistent numbers with 7 traits in the breed's Top 15%. Sells AI'd to Navidad 8/5 on 5/11/19 and later pasture exposed on 5/25/19 to 8/1/19 to Roberto 915C6, TF 811 (Masterpiece son) and WRF Arlo (Hatchet x Copperhead genetics).

LOT 192 **HT** **TF 805**
Tinney Farms
 20181340 | 805 | 2/10/2018 | Bred Heifer

TF 1167
 1297571

RED ROSE FARM 4/4
 1241584

TF 794
 KR 57/001
 HATCHET 150
 MISS JEWEL 04/02

TF 219
 GREY ROCKS RANCH 93/059
 RED ANGUS
 MULTIPLE DAM
 BULL DOG 236
 LUCY 157
 CB 9380
 WENDT 5954

	BW	WW	YW	Milk	T MAT	REA	Marb	FAT
EPDs	0.46	20.13	28.30	5.77	15.84	0.39	-0.04	0.01
Accuracy	0.37	0.39	0.40	0.20	—	0.29	0.31	0.42

	HCW	Sh F	H Prg	Brd Bk	SC	\$G	Carc Idx
EPDs	20.77	0.02	0.07	-0.02	0.24	27.86	10
Accuracy	0.30	0.21	0.11	0.10	0.25		

A TF 1167 daughter that goes back to Hatchet on the bottom side. Impressive numbers that exhibit 4 traits in the breed's Top 1%. Sells AI'd to TF Hatchetman 5/11/19 and later pasture exposed from 5/25/19 to 8/1/19 to Roberto 915C6, TF 811 (Masterpiece son) and WRF Arlo (Hatchet x Copperhead genetics).

LOT 193 **HT** **TF 806**
Tinney Farms
 20181341 | 806 | 2/5/2018 | Bred Heifer

TF 1167
 1297571

TF 359
 1237103

TF 794
 KR 57/001
 REMINGTON 01/0
 BRIGGS 018/1

TF 219
 GREY ROCKS RANCH 93/059
 RED ANGUS
 MULTIPLE DAM
 M.C. HAMMER 860
 EAGLE RANCH 004/4
 POLLED CONNOR 050/97
 BRIGGS 038/98

	BW	WW	YW	Milk	T MAT	REA	Marb	FAT
EPDs	-0.30	-3.50	-8.93	-0.71	-2.46	-0.06	-0.03	-0.02
Accuracy	0.37	0.38	0.39	0.21	—	0.28	0.30	0.42

	HCW	Sh F	H Prg	Brd Bk	SC	\$G	Carc Idx
EPDs	-5.58	-0.02	0.25	0.01	0.02	-7.65	2
Accuracy	0.29	0.21	0.10	0.10	0.25		

Another TF 1167 daughter, these young females make excellent producers. Sells AI'd to King Ranch 1541/17 on 5/11/19 and later pasture exposed from 5/25/19 to 8/1/19 to Roberto 915C6, TF 811 (Masterpiece son) and WRF Arlo (Hatchet x Copperhead genetics).

TINNEY FARMS FEMALE OFFERING



Lots 194 & 195

LOT 194 **TF 865**
Tinney Farms
 20182483 | 865 | 5/8/2018 | Bred Heifer

BRIGGS 072/13
C-P ROBERTO 915C6 (ET)
 20151424 SILVA 915/3

TARA'S TOP DRIVE 911/2
C BAR C PINK ROSE'S BLOSSOM 71/5
 20150496 PC PINK ROSE 64-3

	BW	WW	YW	Milk	T MAT	REA	Marb	FAT
EPDs	0.28	10.70	21.00	-0.56	4.79	0.09	0.06	0.00
Accuracy	0.33	0.37	0.37	0.20	—	0.27	0.29	0.40

	HCW	Sh F	H Prg	Brd Bk	SC	\$G	Carc Idx
EPDs	11.56	0.01	0.08	-0.13	0.24	18.98	10
Accuracy	0.28	0.21	0.11	0.11	0.24		

A Roberto 915C6 daughter, this young female has 5 traits in the breed's Top 15%, including Marbling in the Top 3%. Sells pasture exposed to 8/1/19 to Roberto 915C6, TF 811 (Masterpiece son) and WRF Arlo (Hatchet x Copperhead genetics).

LOT 195 **TF 876**
Tinney Farms
 20182487 | 876 | 6/2/2018 | Bred Heifer

BRIGGS 072/13
C-P ROBERTO 915C6(ET)
 20151424 SILVA 915/3

5-E'S SEVEN (ET) 7
WOMAN HOLLERIN 4651
 20140391 SUZY Q 651

BRIGGS 580/0
 BRIGGS 092/10
 RDF SANCHO 7-216
 SILVA 634/7
 COLT'S GLADIATOR 745/9
 TISON FARMS 4/7
 MOUNTAIN APACHE 46
 ZESTA PRIDE 43

	BW	WW	YW	Milk	T MAT	REA	Marb	FAT
EPDs	1.13	16.70	30.73	1.55	9.90	0.17	0.00	0.01
Accuracy	0.35	0.37	0.37	0.20	—	0.22	0.22	0.32

	HCW	Sh F	H Prg	Brd Bk	SC	\$G	Carc Idx
EPDs	19.77	0.01	-0.05	-0.08	0.21	28.19	10
Accuracy	0.28	0.21	0.11	0.11	0.24		

Another stout Roberto 915C6 daughter with performance traits that include 4 traits in the breed's Top 2%. Sells exposed to Roberto 915C6, TF 811 (Masterpiece son) and WRF Arlo (Hatchet x Copperhead genetics).

LOT 196 **MISS RED DAWN 1803**
Tinney Farms
 20180172 | 1803 | 1/9/2018 | Bred Heifer

TF 921
TF 4127
 20152283 LOUGHRIDGE 535P 535

GRAY OAKS 104
KELSO - 515
 20151480 KELSO 0409

TF 219
 TINNEY FARM 514
 POLLED POWER 233
 LOUGHRIDGE CHRISTMAS 945
 (O.U.) SUPER STAR 33/5
 CHEEKS 2090/4
 GRANDVIEW 763
 KELSO 9607

	BW	WW	YW	Milk	T MAT	REA	Marb	FAT
EPDs	0.54	5.39	7.41	-0.16	2.53	0.06	0.00	0.00
Accuracy	0.17	0.06	0.05	0.03	—	0.02	0.02	0.02

	HCW	Sh F	H Prg	Brd Bk	SC	\$G	Carc Idx
EPDs	5.70	0.04	0.01	0.08	0.43	7.34	9
Accuracy	0.04	0.00	0.00	0.00	0.01		

Granddaughter of National Champion Hatchetman, and on her dam's side she goes back to National Champion Super Star. Very balanced EPDs, including 5 traits in the Top 20%. Sells exposed to Roberto 915C6, TF 811 (Masterpiece son) and WRF Arlo (Hatchet x Copperhead genetics).



Masterpiece 101

Several daughters and sons sell and many cows carry his service throughout the sale.

TINNEY FARM FEMALE OFFERING



Pistolero 64/5

Several Pistolero 64/5 (Reg.# 20157885) daughters sell and cows carry his service from Tinney Farms and Quail Valley Farms.

LOT

197



TF 870

Tinney Farms

20182484 | 870 | 5/21/2018 | Bred Heifer

PISTOLERO

20157885

FC PISTOL 28/0

HARCO 1247

TF 909

BRIGGS 064/11

GUNSLINGER 13/5
HOLLY 20/3
HARCO T958 (ET)
HARCO T883 (ET)
COPPERHEAD 214
LIBERTY RANCH 53/110
BRIGGS 035/6
TF 829

	BW	WW	YW	Milk	T MAT	REA	Marb	FAT
EPDs	1.81	19.97	32.58	2.19	12.17	0.25	-0.03	0.02
Accuracy	0.36	0.38	0.39	0.20	—	0.28	0.30	0.41

	HCW	Sh F	H Prg	Brd Bk	SC	\$G	Carc Idx
EPDs	23.56	-0.01	-0.24	0.00	0.18	30.80	10
Accuracy	0.29	0.21	0.11	0.10	0.27		

One of our first Pistolero daughters to offer for sale, she also goes back to TF 909 and Copperhead on her dam's side. She has performance genetics built in with 4 traits in the breed's Top 2%. Sells exposed to Roberto 915C6, TF 811 (Masterpiece son) and WRF Arlo (Hatchet x Copperhead genetics).

LOT

198



WRF DOS MARIA

Tinney Farms

20180189 | LC 519 | 1/24/2018 | Bred Heifer

TF 484

20143984

TF 909

MCCARTER 716

BRIGGS 567/5

GRAY OAKS 625

COPPERHEAD 214
LIBERTY RANCH 53/110
RITZ CRACKER 100/9
MCCARTER 75/1
WENDT 6240
WENDT 8018
BLACK WARRIOR FARM 1088
M&M 29-1 29/1

	BW	WW	YW	Milk	T MAT	REA	Marb	FAT
EPDs	1.66	3.85	5.48	-2.74	-0.82	-0.02	-0.04	-0.01
Accuracy	0.34	0.31	0.30	0.19	—	0.20	0.21	0.31

	HCW	Sh F	H Prg	Brd Bk	SC	\$G	Carc Idx
EPDs	5.08	-0.03	-0.02	0.01	0.17	5.38	3
Accuracy	0.25	0.21	0.11	0.10	0.24		

TF 909 granddaughter with Briggs Ranches on the dam's side. Sells AI'd to King Ranch 1541/17 on 5/11/19 and later pasture exposed 5/25/19-8/1/19 to Roberto 915C6, TF 811 (Masterpiece son) and WRF Arlo (Hatchet x Copperhead genetics).



Lot 198

Tinney Farms

112-DAY GAIN TEST—

Spring 2020 Test dates to be announced soon!

- Average Daily Gain (ADG)
- Weight per Day of Age (WDA)
- Start Weight
- Mid-test Weight
- Yearling Weight
- Final Weight
- Frame Score
- Scrotal Circumference
- Ultrasound for IMF & REA



for more information contact
Darren Richmond, Richmond Marketing Services, Inc.
423-364-9281 • djarichmd@gmail.com

THE POWER OF CONFIDENT SELECTION



INTRODUCING

Igenity[®] *Santa Gertrudis*

NOW EXCLUSIVELY FROM
SANTA GERTRUDIS BREEDERS INTERNATIONAL

Profitable Selection Made Simple – *Put More Dollars in Your Pocket*

- **Confidently select heifers** before you invest in their development.
- Make **faster gains** in your herd improvement.
- Market your herd quality with a **competitive edge**.
- **Develop** STAR 5 herds with DNA-verified selection and matings.
- **Verify** multi-sire parents in your bull battery.

For information about Igenity Santa Gertrudis or other SGBI programs, contact:

SANTA GERTRUDIS BREEDERS INTERNATIONAL

P.O. Box 1257 • Kingsville, TX 78364

Phone: (361) 592-9357

Executive Director: John E. Ford • jford@santagertrudis.com

www.santagertrudis.com



Thank You

for attending
and your continued
support of the



ALABAMA CONNECTION SALE



Save the Date!
Crimson Classic Sale
April 25, 2020
Cullman, AL